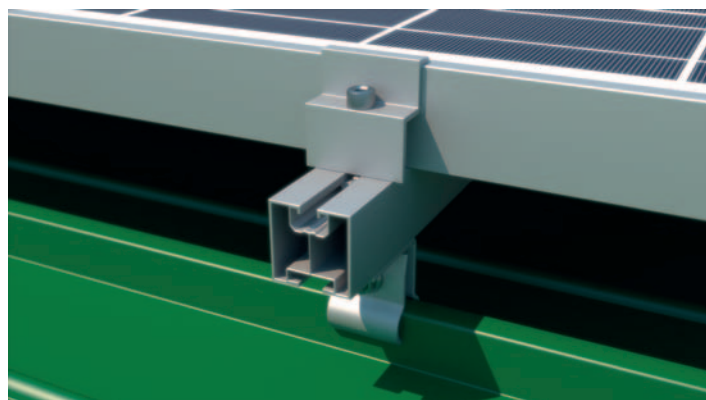
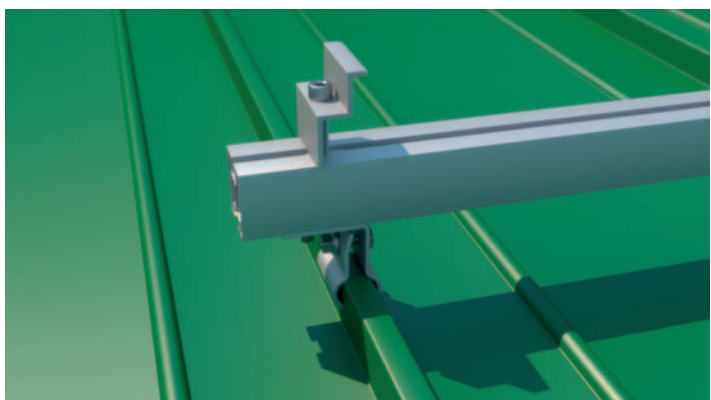
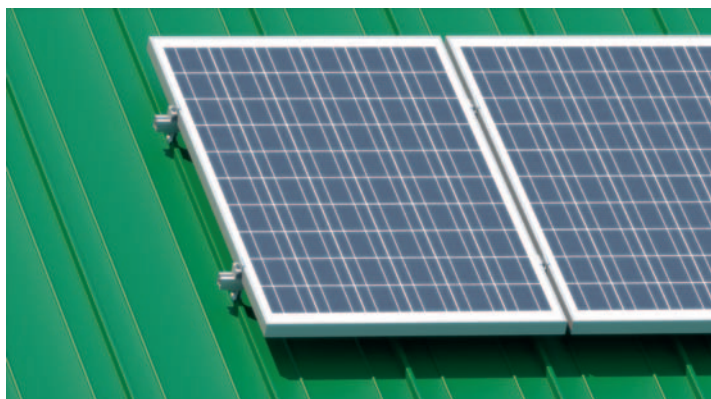


SYSTEM REM-11 VERTICAL

KALZIP ROOF



Art. 0111

Mounting Rail 40 type I
Measurements: 40x40
Length: 6200mm, 3100mm, 2070mm
Joining screws: top M8, bottom M10
Material: AL6060T6



Art. 086

Kalzip Bracket
Length: 40mm, High: 56mm, Hole Ø9mm,
bar Kalzip Ø18 Thickness 2,5mm
Screws included
Use: Kalzip Roof
Material: A2 1.4301 stainless steel



Art. 0129

Hammerhead screws 28/15
Measurements:
M8 16÷70
M10 16÷100
Use: Mounting Rail Art. 0110
Material: A2 1.4301 stainless steel



Art. 0134

**Hexagon flange nuts with serration
DIN 6923**
M6
M8
M10
M12
Material: 1.4301 A2



Art. 0132

**Hexagon socket cap screws DIN 912
with serration**
M8 12÷60
Material: A2 1.4301 stainless steel



Art. 080

**T-slot nuts, self aligning with spring ball
M8**
Used with hexagon socket cap screw
Art. 0132
Use: for Mounting Rails Art. 0109, Art.
0110, Art. 062, Art. 0111, Art. 0112
Material: AL 6060T6



Art. 0147

Click
M8
Material: Aluminium
for rails: Art. 0109, Art. 0111



Art. 073

Middle Clamp
Length: 50mm (standard)
Length: 60mm – 100mm
Height: 30mm
Thickness: 3mm
Colors: plain aluminium/black
Material: AL 6060T6



Art. 075

End clamp
Length: 50 (standard)
Length: 70mm
Height: from 30mm to 50mm
Thickness: 3mm
Colors: plain aluminium/black
Material: AL 6060T6