



Xiamen LARGE Energy Tech Co., Ltd

Sale add: No.18 Xinglong Road Huli District Xiamen China
Factory add: No.15 Xingmei Road Jimei District Xiamen China
Tel: +86 592-5663877 Fax: +86 592-5663511
Zip: 361006
Email: info@largenergy.com Web: www.largenergy.com
WhatsApp: +86 18950038692

Solar Ground Mounting System

- Solar Steel Ground Mounting System**
- Solar AL Ground Mounting System**
- Solar Farm Ground Mounting System**



LARGE ENERGY LARGE ENERGY LARGE ENERGY LARGE ENERGY

The LARGE ENERGY

The LARGE S-Ground mounting system has been developed as a universal PV modules, mounting system for open space ground installations. The system composed with OD60mm hot galvanized steel pipe, rails, the special modules, cross pipe connector, cap kit, ground screws and the high degree of pre-assembly easy and quick to save your labor cost and time. The customized length can eliminate the weld and cut onsite to keep the high anticorrosive performance, the structure strength and the appearance.

Advantages

Materials

LARGE Energy S-Ground mounting rails adopt Aluminum 6005-T5, with surface anodized treatment; the anodized thickness applied complies with National Standard GB5237-2008: product to be anti-corrosive, anti-rust. every bolt and nuts.

International Standard

LARGE Energy S-Ground mounting kits comply with international standard AS/NZS 1170.2, SGS, and ISO9001 keeping up with the leading technology.

Easy & Efficient Installation

Components can be freely combined; Aluminum alloy rails and unique design module are easy to installation together. With high precision, rail length accurate to millimeter, thus will not need any second cut due to rail too long or too short, resulting unnecessary waste. Choose LARGE Energy S-ground mounting kits, Choose higher efficiency and lower cost.

Environment-friendly

LARGE Energy raw materials adopted are recyclable and guaranteed with at least 12 years of quality warranty.

Key Components



Rail

Material: Anodized Al6005-T5

Part No.	Description	Package
LA-SR-01	L=2560mm	4PCS/pack
LA-SR-01	L=3405mm	4PCS/pack
LA-SR-01	L=4200mm	4PCS/pack



Mid Clamp

Material: Anodized Al6005-T5

Part No.	Description	Package
LA-MC02-35	Mid Clamp 35mm	100sets/pack
LA-MC02-40	Mid Clamp 40mm	100sets/pack
LA-MC02-45	Mid Clamp 45mm	100sets/pack
LA-MC02-50	Mid Clamp 50mm	100sets/pack



End Clamp

Material: Anodized Al6005-T5

Part No.	Description	Package
LA-EC-35	End Clamp 35mm	100sets/pack
LA-EC-40	End Clamp 40mm	100sets/pack
LA-EC-45	End Clamp 45mm	100sets/pack
LA-EC-50	End Clamp 50mm	100sets/pack

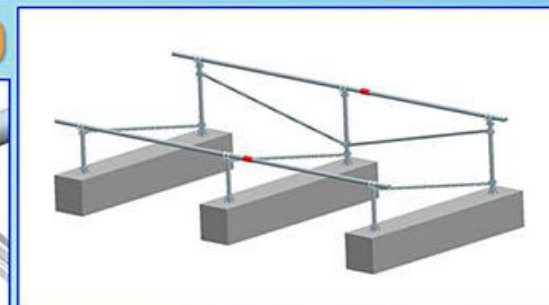


Rail Splice Kit

Material: Anodized Al6005-T5

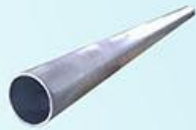
Part No.	Description	Package
LA-SRS	S-Rail Connection	60sets/pack

Installation Instruction



www.largenergy.com

Key Components



Support Leg Material: Hot Galvanized Steel Q235

Part No.	Description	Package
LA-SFL	Front Leg, Rear Leg	Pack as per request
LA-SFL	and Cross Pipe	
LA-SCP		



Enforcement Pipe Material: Anodized AL6005-T5

Part No.	Description	Package
LA-SEP	Enforcement from front leg to rear leg	Pack as per request



L-Splice Kit Material: Anodized AL6005-T5

Part No.	Description	Package
LA-SLU	Fix rails onto the cross pipe	16 sets/pack



Cross Pipe Connector Material: Anodized AL6005-T5

Part No.	Description	Package
LA-SCPC	Connect the cross pipes	8 sets/pack



Pipe Cap Kits Material: DACROMET Steel Q235

Part No.	Description	Package
LA-SPCO	Connect the pipe	4 sets/pack



Pipe Cap Kits Material: DACROMET Steel Q235

Part No.	Description	Package
LA-SPCE	Connect the pipe	3 sets/pack



Pipe Cap Kits Material: DACROMET Steel Q235

Part No.	Description	Package
LA-SPCB	Connect the pipe	4 sets/pack



Pipe Cap Kits Material: DACROMET Steel Q235

Part No.	Description	Package
LA-STPC-10	Connect the pipe	4 sets/pack



Pipe Cap Kits Material: DACROMET Steel Q235

Part No.	Description	Package
LA-SPCS	Connect the pipe	2 sets/pack



Pipe Sleeve Material: DACROMET Steel Q235

Part No.	Description	Package
LA-PSE-01	Connect the pipe	12 sets/pack



Pipe Sleeve Material: DACROMET Steel Q235

Part No.	Description	Package
LA-PSE-02	Connect the pipe	10 sets/pack



Ground Screw Material: Hot Galvanized Steel Q235

Part No.	Description	Package
LA-GS-76	Length 1600mm OD76mm with flange	Pack as per request



Ground Screw Material: Hot Galvanized Steel Q235

Part No.	Description	Package
LA-GSW-76	Length 1600mm OD76mm No flange	Pack as per request

The LARGE ENERGY

The LARGE AL-Ground mounting system has been developed as a universal PV modules, mounting system for open space ground installations. The system composed with Strong, ground rails , the special "D" modules, H90mm support pipe, H connector ,ground base, ground screws and the high degree of pre-assembly easy and quick to save your labor cost and time. The customized length can eliminate the weld and cut onsite to keep the high anticorrosive performance, the structure strength and the appearance.

Advantages

Materials

LARGE Energy AL- Ground mounting rails adopt Aluminum 6005-T5, with surface anodized treatment; the anodized thickness applied complies with National Standard GB5237-2008: product to be anti-corrosive, anti-rust. every bolt and nuts.

International Standard

LARGE Energy AL- Ground mounting kits comply with international standard AS/NZS 1170.2 ,SGS, and ISO9001 keeping up with the leading technology.

Easy & Efficient Installation

Components can be freely combined; Aluminum alloy rails and unique design module are easy to installation together. With high precision, rail length accurate to millimeter, thus will not need any second cut due to rail too long or too short, resulting unnecessary waste. Choose LARGE Energy AL ground mounting kits, Choose higher efficiency and lower cost.

Environment-friendly

LARGE Energy raw materials adopted are recyclable and guaranteed with at least 12 years of quality warranty.

Feature

Installation site:	Open Ground
Wind load:	Upto 60M/S
Snow load:	Upto 1.5KN/M2
Angle:	Upto 60 degree
Applicable module:	Framed or Filmed
Module Orientation:	Landscape and Portrait
Module Dimension:	Applicable to any dimension
Standard compliance:	AS/NZS1170.2 ; SGS and other international standard
Quality warranty:	12 years for all components.
Color:	Natural or customized.

Key Components



A- Rail

Material: Anodized Al6005-T5

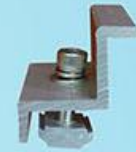
Part No.	Description	Package
LA-AR	Length as per design	Pack as per request



Mid Clamp

Material: Anodized Al6005-T5

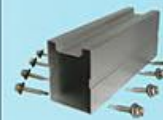
Part No.	Description	Package
LA-AMC-35	Mid Clamp 35mm	80 sets/pack
LA-AMC-40	Mid Clamp 40mm	80 sets/pack
LA-AMC-45/46	Mid Clamp 45/46mm	80 sets/pack
LA-AMC-50	Mid Clamp 50mm	80 sets/pack



End Clamp

Material: Anodized Al6005-T5

Part No.	Description	Package
LA-AEC-35	End Clamp 35mm	80 sets/pack
LA-AEC-40	End Clamp 40mm	80 sets/pack
LA-AEC-45/46	End Clamp 45/46mm	80 sets/pack
LA-AEC-50	End Clamp 50mm	80 sets/pack



A-Rail Splice

Material: Anodized Al6005-T5

Part No.	Description	Package
LA-ARS	A-Rail Connector	6 sets/pack

Installation Instruction



www.largenergy.com

Key Components



Support Pipe

Material: Anodized AL6005-T5

Part No.	Description	Package
LA-ASP01	Support pipe for A Rails	Pack as per request



Front/Back Leg

Material: Anodized AL6005-T5

Part No.	Description	Package
LA-AFL	Front Leg	Pack as per request
LA-ABL	Back Leg	Pack as per request
LA-AEL	Enforcement Leg	Pack as per request



Enforcement Pipe

Material: Anodized AL6005-T5

Part No.	Description	Package
LA-AEP	Enforcement between the back legs	Pack as per request



A-Rail Clip

Material: Anodized AL6005-T5

Part No.	Description	Package
LA-ARC01	Fix the A-Rail to the support pipe	Pack as per request



A-Rail Clip

Material: Anodized AL6005-T5

Part No.	Description	Package
LA-ARC02	Fix the A-Rail to the support pipe	Pack as per request



H Connector

Material: Anodized AL6005-T5

Part No.	Description	Package
LA-AHC02	Connect Legs and the support pipe	6 sets/pack



H Connector

Material: Anodized AL6005-T5

Part No.	Description	Package
LA-AHC01	Connect the front leg and Enforcement leg	4 sets/pack



Ground Base

Material: Anodized AL6005-T5

Part No.	Description	Package
LA-AFB LA-ABB	Connect Legs with ground screw	2 sets/pack



Mid Clamp Earthing

Material: Stainless Steel 304

Part No.	Description	Package
LA-AMGL-01	Electrical grounding	Pack as per request



Pipe Cap Kits

Material: DACROMET Steel Q235

Part No.	Description	Package
LA-APCS	Fix ground base with ground screw	Pack as per request



Ground Screw

Material: Hot Galvanized Steel Q235

Part No.	Description	Package
LA-GSWT-48.6	Length 1500mm OD48.6 mm No flange	Pack as per request



Ground Screw

Material: Hot Galvanized Steel Q235

Part No.	Description	Package
LA-GS-76	Length 1600mm OD76mm with flange	Pack as per request



Ground Screw

Material: Hot Galvanized Steel Q235

Part No.	Description	Package
LA-GSW-76	Length 1600mm OD76mm No flange	Pack as per request

The LARGE ENERGY

The LARGE Farm mounting system has been developed as a universal PV modules, The mounting system for farm earth installations. The system composed with OD60mm, or OD48.6mm galvanized steel pipe and tilt cap kits, the special modules, ground screw and the high degree of pre-assembly eliminate the need for onsite cutting, welding and enables quick and easy field PV module installations. and can support different quantity solar panel to meet the customers' fram requirements.

Advantages

Materials

LARGE Energy Farm mounting rails adopt Aluminum 6005-T5, with surface anodized treatment; the anodized thickness applied complies with National Standard GB5237-2008: product to be anti-corrosive, anti-rust. every bolt and nuts.

International Standard

LARGE Energy farm mounting kits comply with international standard AS/NZS 1170.2 ,SGS, and ISO9001 keeping up with the leading technology.

Easy & Efficient Installation

Components can be freely combined; Aluminum alloy rails and unique design module are easy to installation together. With high precision, rail length accurate to millimeter, thus will not need any second cut due to rail too long or too short, resulting unnecessary waste. Choose LARGE Energy Farm mounting kits, Choose higher efficiency and lower cost.

Environment-friendly

LARGE Energy raw materials adopted are recyclable and guaranteed with at least 12 years of quality warranty.



Feature

Installation site:	Farm Ground
Wind load:	Upto 60M/S
Snow load:	Upto 1.5KN/M2
Angle:	Upto 60 degree
Applicable module:	Framed or Filmed
Module Orientation:	Landscape and Portrait
Module Dimension:	Applicable to any dimension
Standard compliance:	AS/NZS1170.2 ; SGS and other international standard
Quality warranty:	12 years for all components.
Color:	Natural or customized.

Key Components



Support Leg	Material: Hot Galvanized Steel Q235	
Part No. LA-FSL	Description Support pipe OD60mm	Package Pack as per request



Pipe Cap Kits	Material: DACROMET Steel Q235	
Part No. LA-FTPC-15	Description Pipe tilt cap(fix the leg into the cap)	Package 3 Sets/pack



Pipe Clamp	Material: Electroplating Steel Q235	
Part No. LA-PSE-03	Description Connect the legs with ground screw	Package Pack as per request



Ground Screw	Material: Hot Galvanized Steel Q235	
Part No. LA-GSWT-48.6	Description Length 1500mm OD48.6mm No flange	Package Pack as per request

Installation Instruction

