

Rack mounted energy storage series

Application: home backup power, UPS and backup power supply for hospitals, banks, small businesses, small base stations, etc.

Features: Customized BMS communication protocol and upper panel, support for parallel expansion, a variety of specifications and sizes are available, convenient and quick installation, convenient and simple connection.

Rack mounted energy storage series

S12120\S4850

- ⊗ Customized BMS communication protocol
- ⊖ Supprt parallel increase capacity
- ⊗ Simply Installation



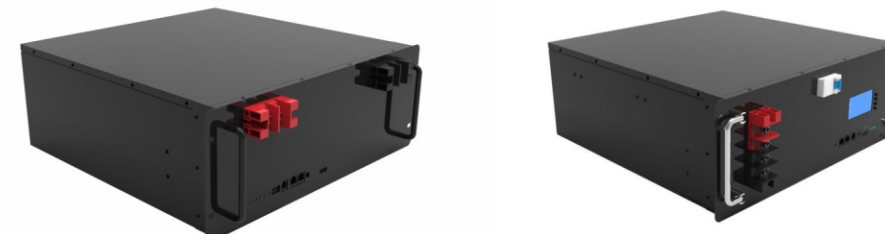
Apperance patent №: 202130350809.8 Utility model patent №: 202121271622.X

Model	S12120	S4850
Nominal voltage	12.8V	51.2V
Nominal capacity	120Ah	50Ah
Assembly method	4S2P	16S1P
Size (mm)	638*280(315)*51	450*442*132
Weight(kgs)	15	30
Charging method	CC/CP/VP	
Charging current	0.2C	
Maximum charging current	Max 1C @ 25°C	
Charging cut-off voltage	14.5V	58.4V
Discharge way	CC/CP/VP	
Discharge current	0.5C	
Maximum Discharge current	Max 1C @ 25°C	
Discharge cut-off voltage	10.8V	43.2V
internal resistance	≤80mΩ	
Display	LCD	
Communication interface	Bluetooth	RS485/232/CAN
Charging work temperature	0~ + 50°C	
Discharging work temperature	-20~ + 55°C	
Warranty	24 months	

Rack mounted energy storage series

S4880\S48100

- ⊗ Customized BMS communication protocol
- ⊖ Supprt parallel increase capacity
- ⊗ Simply Installation



Model	S4880	S48100
Nominal voltage	51.2V	
Nominal capacity	80Ah	100Ah
Assembly method	16S1P	16S1P/16S2P
Size (mm)	480*442*177	450*442*177
Weight(kgs)	45	
Charging method	CC/CP/VP	
Charging current	0.2C	
Maximum charging current	Max 1C @ 25°C	
Charging cut-off voltage	58.4V	
Discharge way	CC/CP/VP	
Discharge current	0.5C	
Maximum Discharge current	Max 1C @ 25°C	
Discharge cut-off voltage	43.2V	
internal resistance	≤50mΩ	
Display	LCD	
Communication interface	RS485/232/CAN	
Charging work temperature	0~ + 50°C	
Discharging work temperature	-20~ + 55°C	
Warranty	24 months	

Rack mounted energy storage series

S48150\S48170

- ⊗ Customized BMS communication protocol
- ⊞ Supprt parallel increase capacity
- ⊗ Simply Installation



Model	S48150	S48170
Nominal voltage	51.2V	
Nominal capacity	150Ah	170Ah
Assembly method	16S1P/16S3P	16S1P
Size (mm)	520*442*221	520*442*221
Weight(kgs)	68	85
Charging method	CC/CP/VP	
Charging current	0.2C	
Maximum charging current	Max 1C @ 25°C	
Charging cut-off voltage	58.4V	
Discharge method	CC/CP/VP	
Discharge current	0.5C	
Maximum Discharge current	Max 1C @ 25°C	
Discharge cut-off voltage	43.2V	
internal resistance	≤50mΩ	
Display	LCD	
Communication interface	RS485/232/CAN	
Charging work temperature	0~ + 50°C	
Discharging work temperature	-20~ + 55°C	
Warranty	24 months	

Rack mounted energy storage series

S24200\S48200

- ⊗ Customized BMS communication protocol
- ⊞ Supprt parallel increase capacity
- ⊗ Simply Installation



Model	S24200	S48200
Nominal voltage	25.6V	51.2V
Nominal capacity	202Ah	200Ah
Assembly method	8S1P	16S1P
Size (mm)	480*442*177	450*442*177
Weight(kgs)	45	85
Charging method	CC/CP/VP	
Charging current	0.2C	
Maximum charging current	Max 1C @ 25°C	
Charging cut-off voltage	58.4V	
Discharge method	CC/CP/VP	
Discharge current	0.5C	
Maximum Discharge current	Max 1C @ 25°C	
Discharge cut-off voltage	43.2V	
internal resistance	≤50mΩ	
Display	LCD	
Communication interface	RS485/232/CAN	
Charging work temperature	0~ + 50°C	
Discharging work temperature	-20~ + 55°C	
Warranty	24 months	