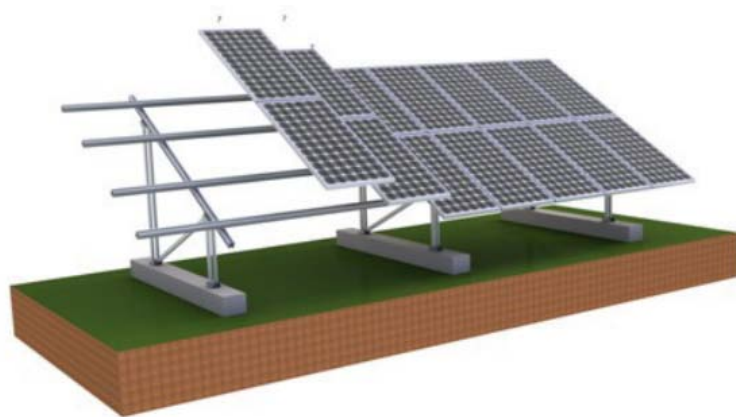




Ground Mount Solution



Eon Ground Mount System is designed for medium to large scale project installation.

The most appropriate ground mount for any outdoor site depends on project size, engineering considerations, mounting surface material,

soil conditions and ground topography, so Eon offers a diverse range of ground mounting systems to ensure a solution is available for every application, location and environment.

Each system is designed for simple installation, durability, cost-effectiveness and flexibility in design and installation.

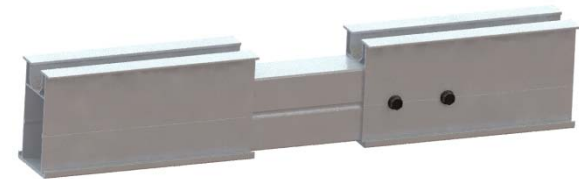


Aluminum Ground Supporting System



Eon solar aluminum ground is made of aluminum and can be used in concrete foundation or ground screw. It is applicable to any flat areas, and can even installed to

the cement flat roof if permits. The features are light weight, firm in structure, and use recyclable material. It's preassembled. Less installation process, higher efficiency.



EON Ground Rail