

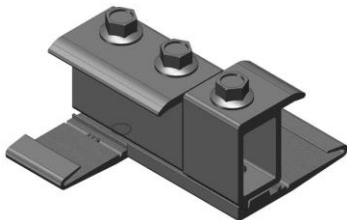


MageMount II Rail-less Solar Mounting System

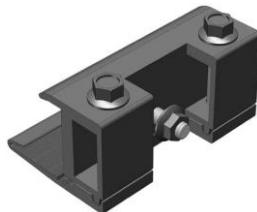
Product Catalog

Material: Aluminum alloy 6063-T5 or 6061-T6, aluminum 3003-H14, and 304 stainless steel
Finish: Clear and black anodized or mill finish
Warranty: 25-year limited warranty (except PV modules)

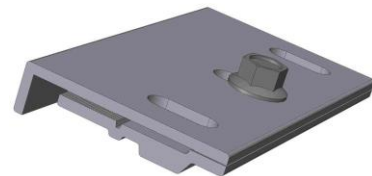
Mounting Components



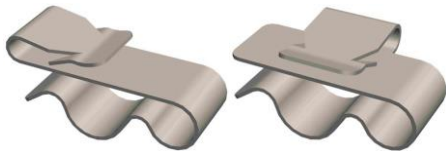
Module Connector
(301-101)



Module Bracket
(301-206)



Accessory Mounting Bracket
(301-204)



Cable Clips
(301-280, 301-290)



Grounding Lug
(301-210)



Skirt and Skirt End Caps
(201-165 and 201-166)



Module Block
(201-501)

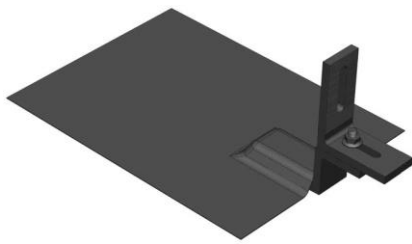
| Part # | Description | Finish | Package Quantity |
|---------|----------------------------------|--------|------------------|
| 301-101 | Module Connector | Black | 50 |
| 301-206 | Module Bracket | Black | 50 |
| 301-204 | Accessory Bracket | Black | 40 |
| 301-280 | Cable Clip | Clear | 50 |
| 301-290 | Cable Clip | Clear | 50 |
| 301-210 | Grounding Lug | Clear | 10 |
| 201-165 | Skirt with Fasteners 65.5" Long | Black | 5 |
| 201-166 | Skirt End Caps, Two with Screws | Black | 2 |
| 201-501 | Module Block (Installation Tool) | Clear | 2 |

www.magerack.com
 sales@magerack.com
 510-656-6661

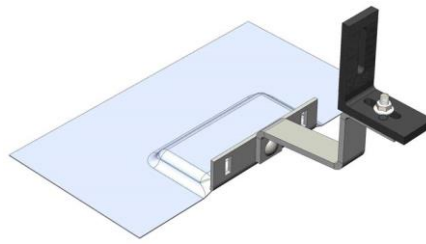


Copyright © 2018 Magerack Corporation. All rights reserved.
 Magerack products are protected by U.S. patents and pending patents

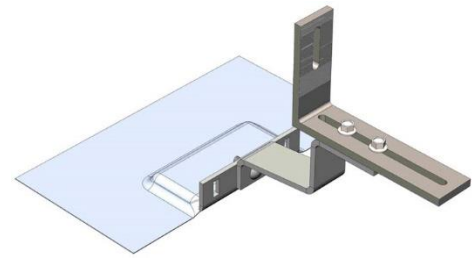
Roof Attachments



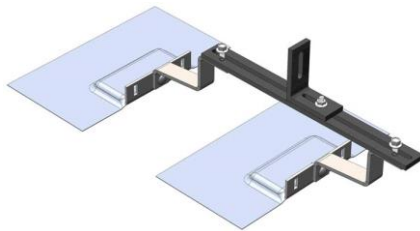
Comp Foot or Tall Comp Foot with Flashing
(201-302 or 201-304)



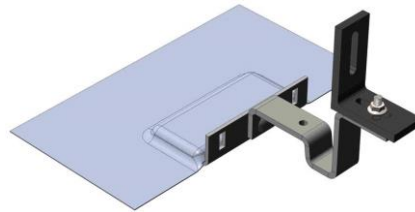
Tile Foot
(201-306)



Long Tile Foot
(201-308)



Double Tile Feet
(201-310)



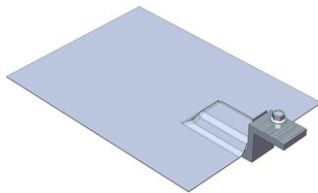
Steel-Roof Tile Foot
(201-312)



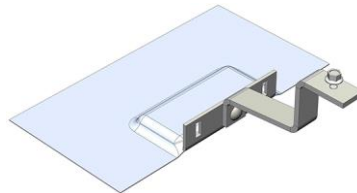
L Bracket
(201-301)



Standoff 4" or 6"
(201-314 or 201-316)



Comp Conduit Mount
(201-122)



Tile Conduit Mount
(201-126)

| Part # | Description | Finish | Package Quantity |
|---------|------------------------------------|-----------------|------------------|
| 201-302 | Comp Foot with Flashing | Black | 50 |
| 201-304 | Tall Comp Foot with Flashing | Black | 50 |
| 201-306 | Tile Foot with Flashing | Black L Bracket | 20 |
| 201-308 | Long Tile Foot with Flashing | Black L Bracket | 20 |
| 201-310 | Double Tile Feet with Flashing | Black L Bracket | 10 |
| 201-312 | Steel-Roof Tile Foot with Flashing | Black L Bracket | 20 |
| 201-301 | L Bracket | Black | 50 |
| 201-314 | Standoff 4" | Clear | 30 |
| 201-316 | Standoff 6" | Clear | 30 |
| 201-122 | Comp Conduit Mount | Black | 20 |
| 201-126 | Tile Conduit Mount | Clear | 20 |