



60 Cell Mono  
370-390W

BVM370/390LM5-60S

0~+5W  
Power Tolerance

20.8%  
Maximum Efficiency

370-390W  
Power Output Range



High Quality and Reliable Modules

- ◆ Withstand up to 5400 Pa snow load and 2400 Pa wind load
- ◆ 1000/1500V DC TUV certified
- ◆ 2 EL inspections per cell/module for defect-free consistency
- ◆ Fire Rating Class C by TUV NORD
- ◆ High salt and ammonia resistance certified by TUV NORD
- ◆ 0-+5 W guaranteed positive tolerance
- ◆ Rugged design for long-term durability; passed extended reliability tests



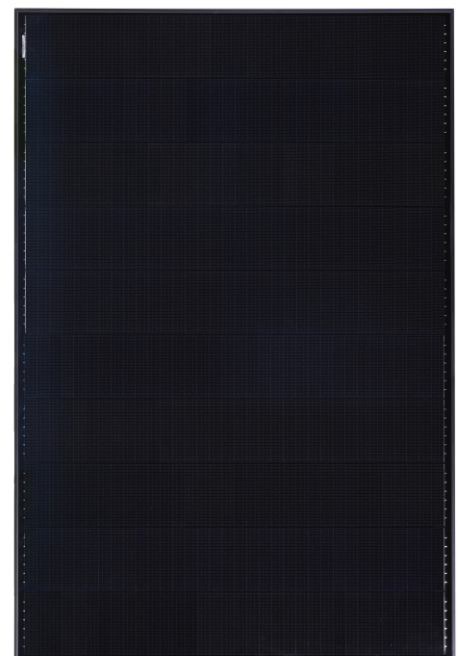
Warranty

- ◆ 15-year product warranty
- ◆ 25-year linear power output warranty

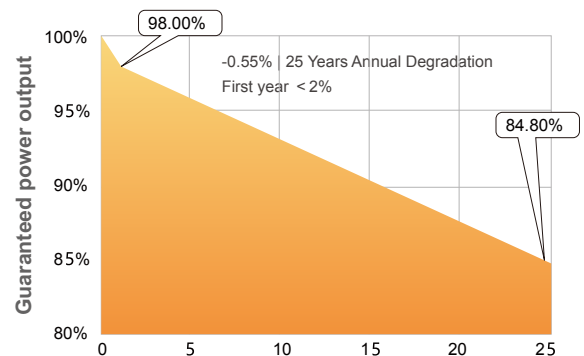


Comprehensive Certificates for Products and Management

- ◆ UL 1703, IEC 61215, IEC 61730, CEC listed, MCS and CE
- ◆ ISO 9001 for Quality Management Systems
- ◆ ISO 14001 for Environmental Management Systems
- ◆ OHSAS 18001 Occupational Health and Safety System



1646 x 1140 x 35 mm  
Black Frame / Black Backsheet



Boviet Solar [www.boviet.com](http://www.boviet.com)

B5, B6, Song Khe Industrial Zone, Noi Hoang District Bac Giang Province, 21000 Vietnam

## Electrical Characteristics STC

	BVM370LM5-60S-H	BVM375LM5-60S-H	BVM380LM5-60S-H	BVM385LM5-60S-H	BVM390LM5-60S-H
Maximum Power (Pmax)	370W	375W	380W	385W	390W
Maximum Power Current (Imp)	9.20A	9.28A	9.36A	9.44A	9.51A
Maximum Power Voltage (Vmp)	40.2V	40.4V	40.6V	40.8V	41.0V
Short Circuit Current (Isc)	9.85A	9.89A	9.93A	9.98A	10.03A
Open Circuit Voltage (Voc)	48.7V	48.9V	49.1V	49.3V	49.5V
Module Efficiency	19.7%	20.0%	20.3%	20.5%	20.8%
Power Tolerance	0~+5W	0~+5W	0~+5W	0~+5W	0~+5W
STC: AM1.5, Irradiance 1000W/m <sup>2</sup> , 25°C					

## Electrical Characteristics NOCT

	BVM370LM5-60S-H	BVM375LM5-60S-H	BVM380LM5-60S-H	BVM385LM5-60S-H	BVM390LM5-60S-H
Maximum Power (Pmax)	279W	282W	286W	290W	294W
Maximum Power Current (Imp)	7.27A	7.33A	7.39A	7.45A	7.51A
Maximum Power Voltage (Vmp)	38.3V	38.5V	38.7V	38.9V	39.1V
Short Circuit Current (Isc)	7.93A	7.97A	8.00A	8.04A	8.08A
Open Circuit Voltage (Voc)	46.4V	46.6V	46.8V	47.0V	47.2V

NOCT: AM1.5, Irradiance 800W/m<sup>2</sup>, 20°C, Wind speed 1m/s

## Mechanical Characteristics

## Thermal Characteristics

Solar Cell	PERC Mono-crystalline silicon solar cells 158.75x158.75(in increment of 5)	Pmax Temperature Coefficient	-0.34%/°C
Glass	White toughened safety glass, 3.2 mm	Voc Temperature Coefficient	-0.27%/°C
Frame	Anodized aluminum profile	Isc Temperature Coefficient	+0.04%/°C
Junction Box	Ip67 rated, with 2 bypass diode	NOCT	42.3±2°C
Output Cable	4 mm <sup>2</sup> (TUV&UL)/ 1000 mm long		
Connector	MC4 Compatible		
Dimension	1646x1140x35 mm		
Weight	20.5 KG		

## Maximum Ratings

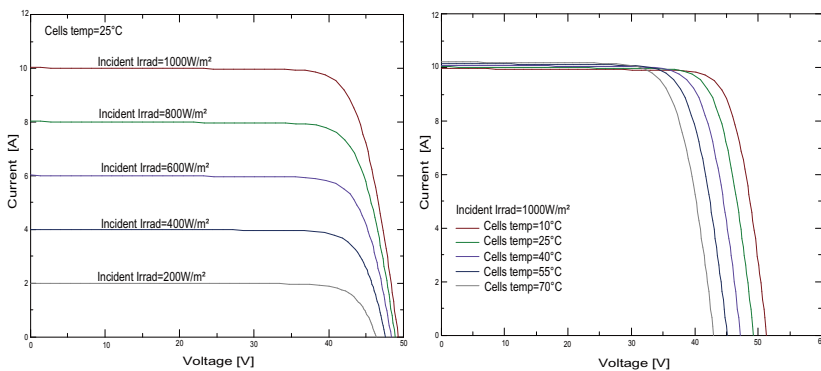
## Packing Information

Operating Temperature	-40~85°C	Pieces per pallet	31
Maximum Series Fuse Rating	20A	Pallets per container (40HQ)	28
Maximum System Voltage	1000/1500V DC	Pieces per container (40HQ)	868

Specifications in this datasheet are subject to change without prior notice.

Pallet weight/size 660KG/ 1676x1280x1140 mm

### I-V Curver



尹利恒

