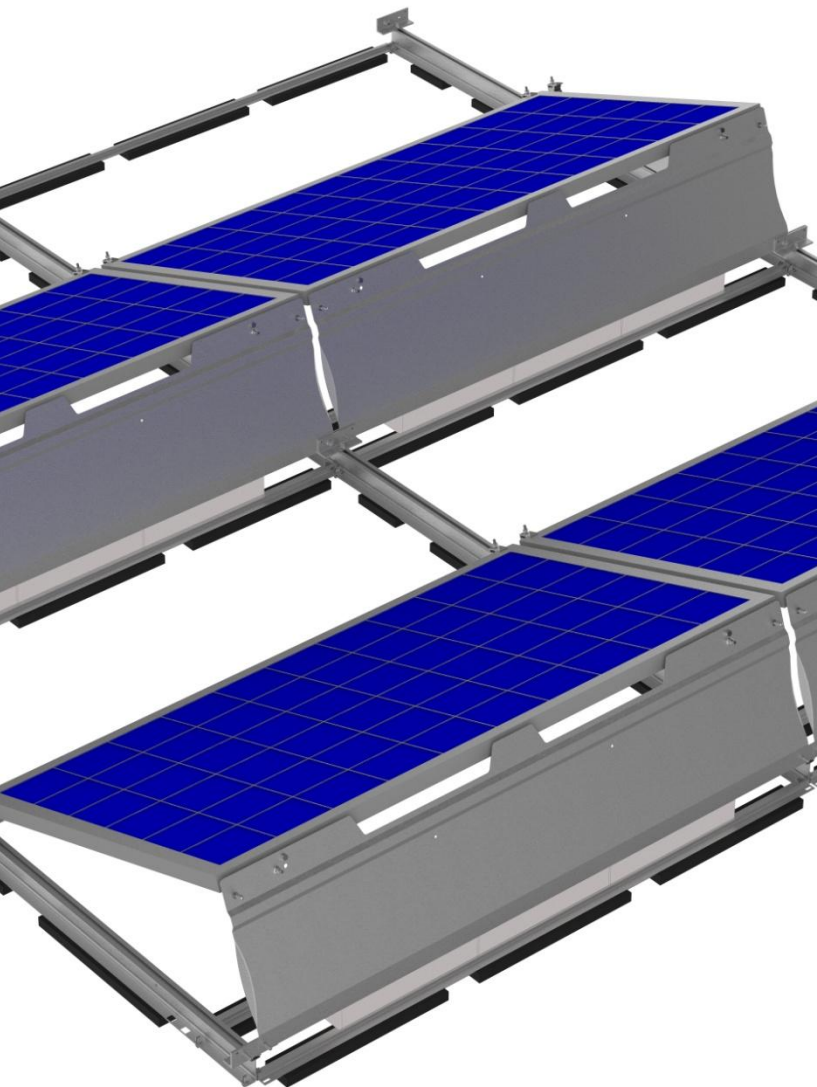




PR2

BALLASTED FLAT ROOF SYSTEM

The PR2 Ballasted Flat Roof System is the ideal solution for roofs with low reserve loads or geographic areas with high snow and/or wind loads. Its superior grid architecture makes it the lightest ballasted solution in the industry.

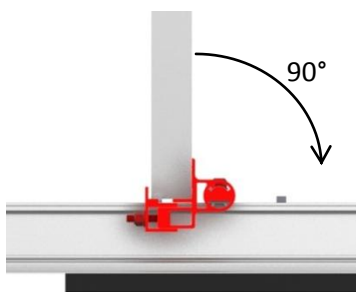
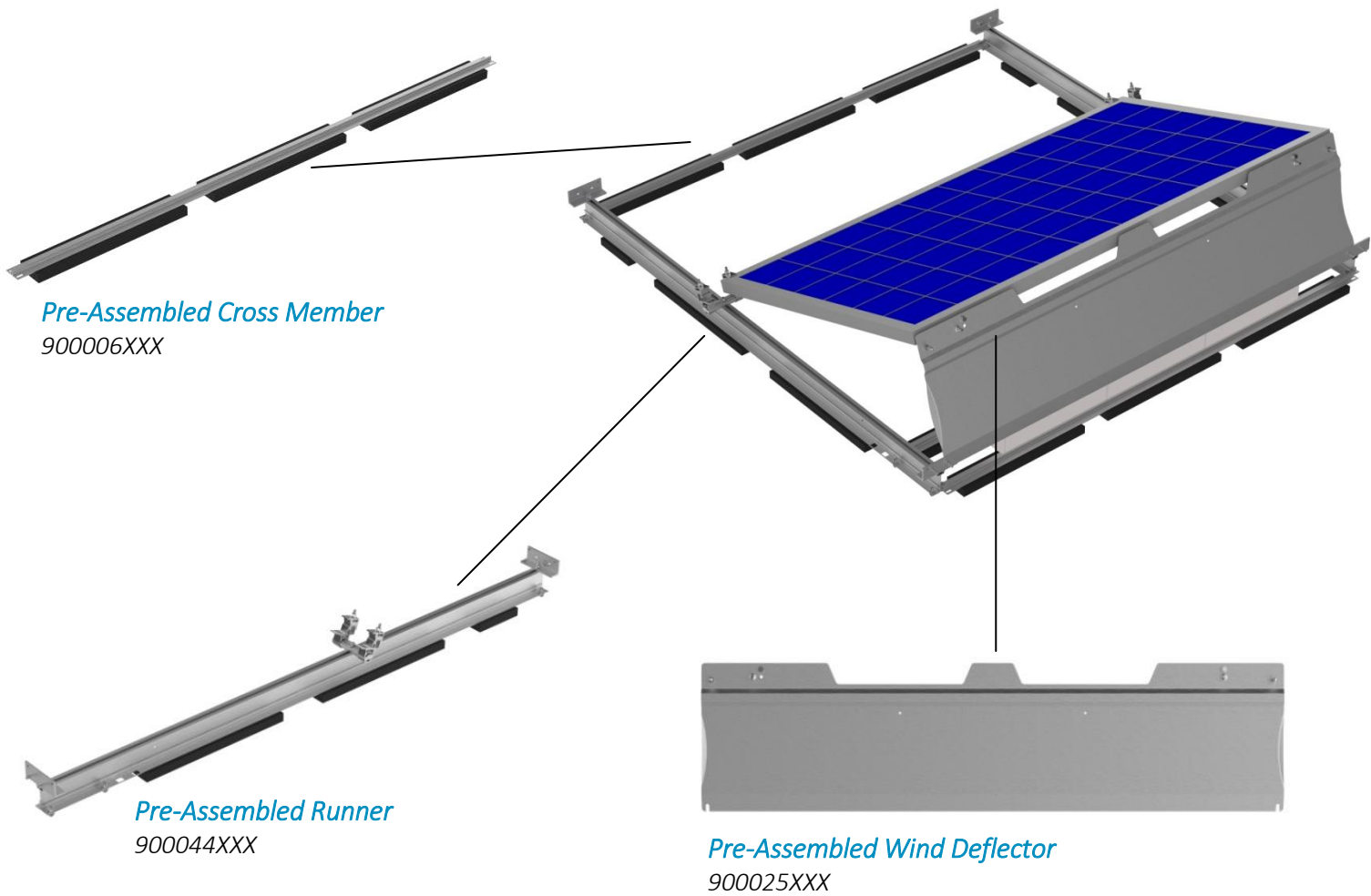


KEY PRODUCT BENEFITS

- Average load <3psf on roof
- 30% faster install time (1 fastener – 1 tool)
- Only 3 components & 1 fasteners
- Adjust to varying roof slopes
- FastCAD system for improved revision management
- Full visual access to module from all sides
- Easy access to roof anytime
- 10 year warranty

KEY TECHNICAL FEATURES

- 100% aluminum with stainless steel fasteners
- Extreme weight distribution minimizes point loading
- Integrated combiners reduces footprint
- Ballast under the module for safety
- Low torque frequency (3 years)
- Single panel modular design allows for flexibility around roof obstructions maximizing available space
- Integrated bonding
- Optional Anchor/Hybrid solution available



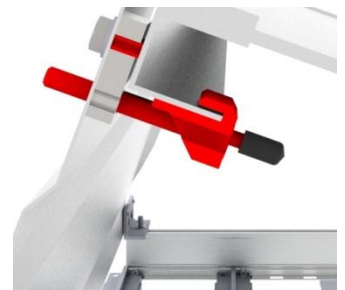
*Standard Rotating Front
Clamp for all Tilts*



*Snap-in Cross Member
Connection*



Bay to Bay Bonding



*Module Bonding
through J-Clamp*



This document does not create any express warranty by Polar Racking, about its products or services. Polar Racking's sole warranty is contained in the written product manual for each product. The end-user documentation shipped with Polar Racking's products constitutes the sole specification referred to the product warranty. The customer is solely responsible for verifying the suitability of Polar Racking's product for each use. Subject to change without notice. Last update, September 2015.