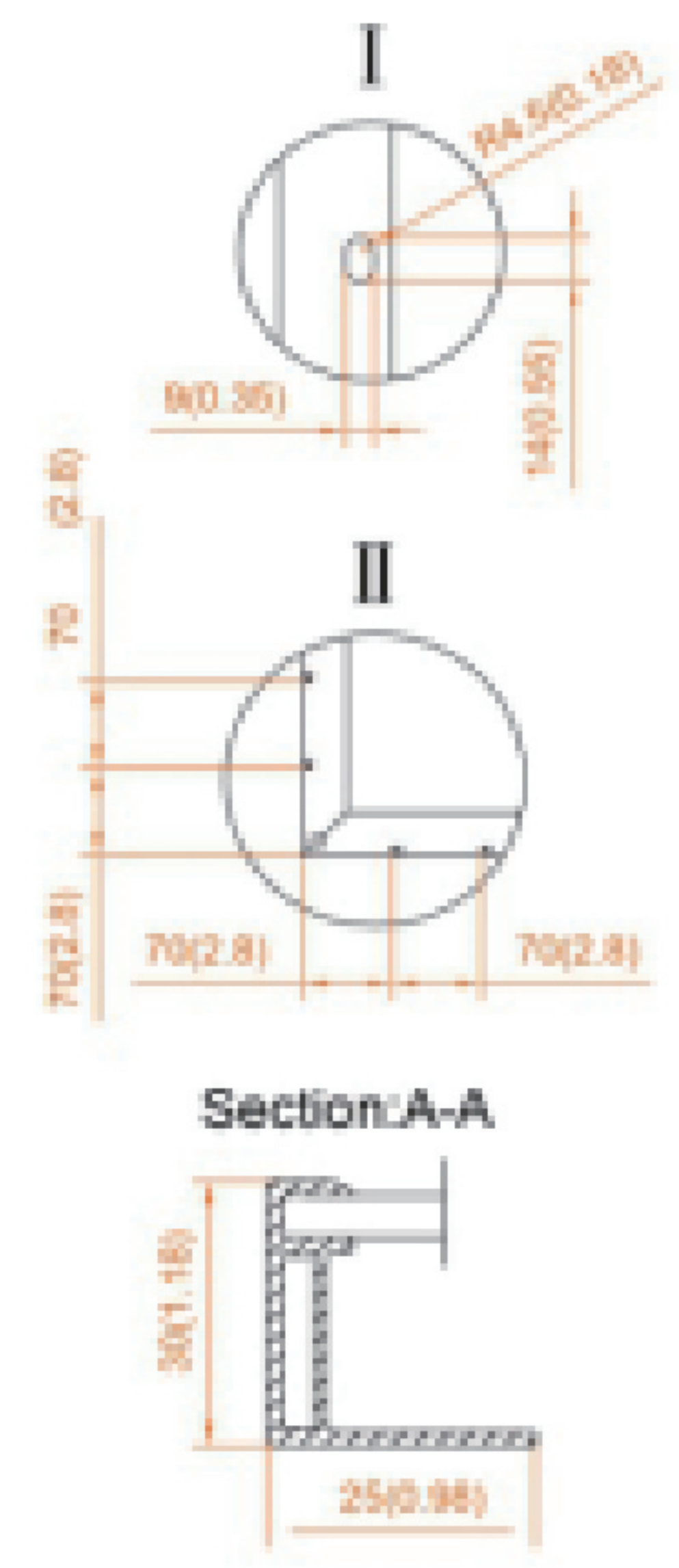
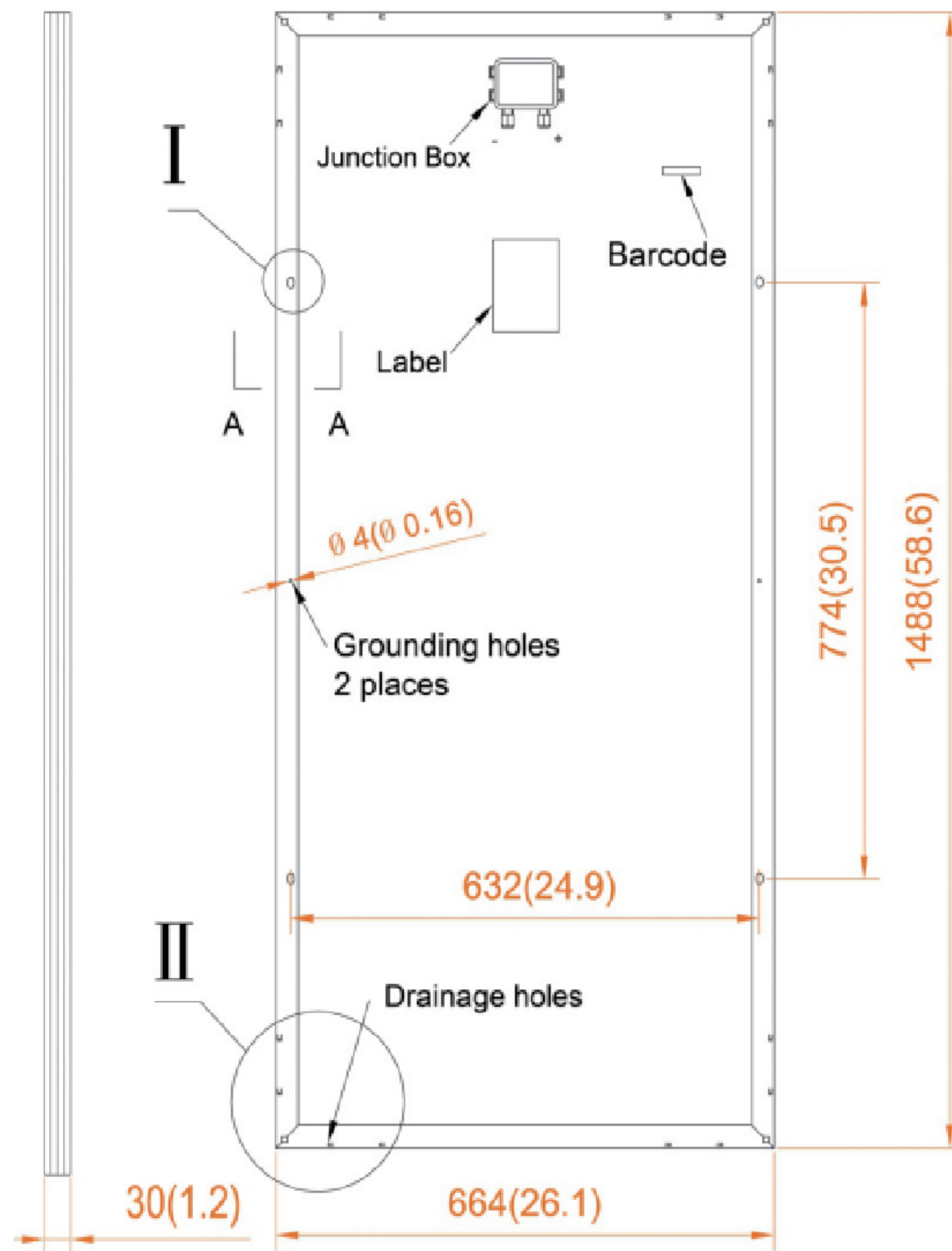
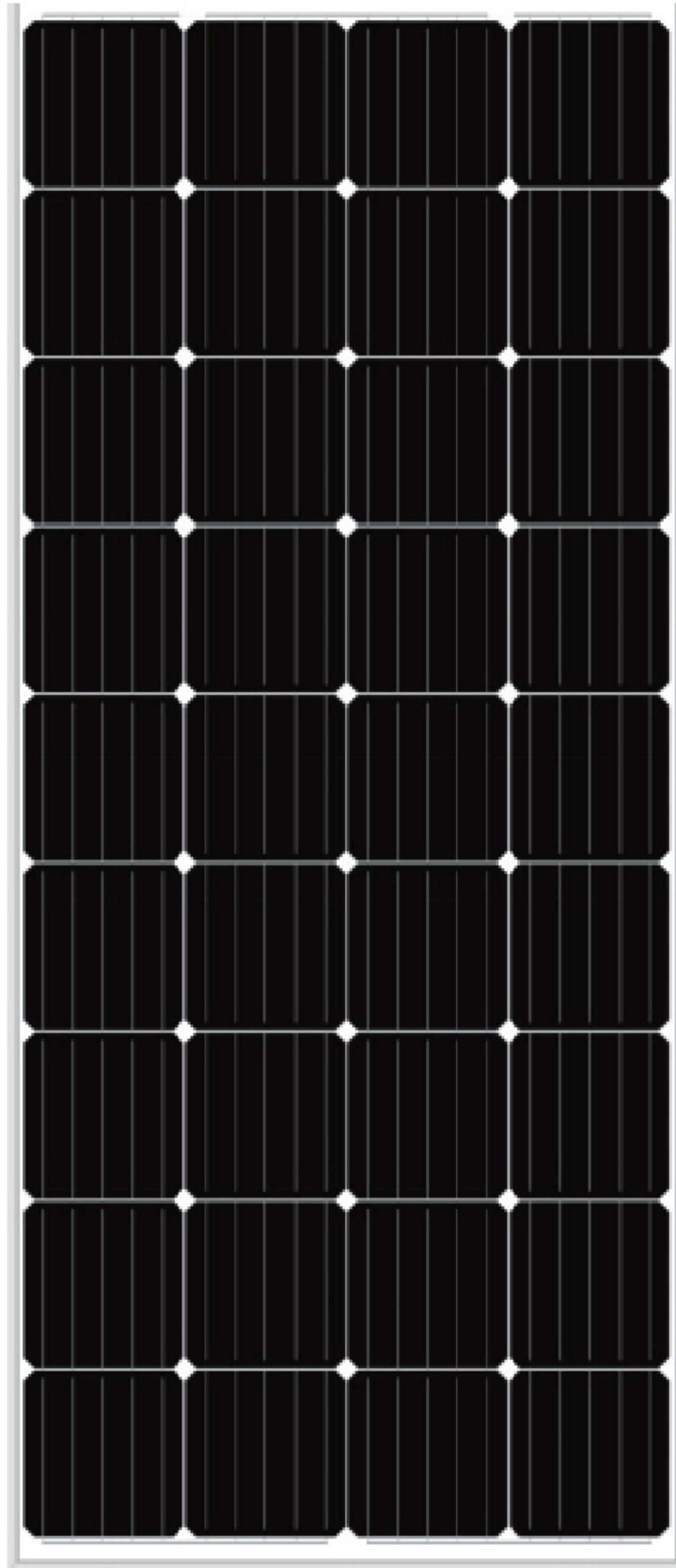




## 170~190 Watt



### MANAGEMENT SYSTEM

- ISO 9001: Quality management system
- ISO 14001: Standard for environmental management system
- OHSAS 18001: International standard for occupational health and safety assessment system



\*BLACK FRAME/BLACK BACK-SHEET PRODUCTS ARE AVAILABLE UPON REQUEST

### PRODUCT CERTIFICATES



#### Electrical Characteristics under STC\*

Module Type	FSM170M636	FSM175M636	FSM180M636	FSM185M636	FSM190M636
Maximum Power-Pmax (Wp)	170	175	180	185	190
Voltage at Maximum Power-Vmp (V)	19.2	19.3	19.5	19.7	19.9
Current at Maximum Power-Imp (A)	8.86	9.07	9.24	9.39	9.55
Open Circuit Voltage-Voc (V)	23.4	23.6	23.9	24.1	24.4
Short Circuit Voltage-Isc (A)	9.38	9.61	9.81	9.93	10.08
Module Efficiency- $\eta_m$ (%)	17.2	17.7	18.2	18.7	19.2
Power Tolerance (%)	0/+3	0/+3	0/+3	0/+3	±3

\*STC (Standard Testing Conditions): Irradiance 1000W/m<sup>2</sup>, cell temperature 25°C, AM=1.5

\*NOCT (Nominal Operating Cell Temperature): Irradiance 800W/m<sup>2</sup>, ambient temperature 20 °C, wind speed 1 m/s

#### Mechanical Characteristics

Cell Type	Mono-crystalline 156.75×156.75mm
Number of Cells	36 (4×9)
Dimension	1488×664×30mm
Weight	12 kg

#### Temperature Characteristics

NOCT*	45±2°C
Temperature Coefficient of Pmax (%)	-0.40/°C
Temperature Coefficient of Voc (%)	-0.31/°C
Temperature Coefficient of Isc (%)	0.04/°C

#### Maximum System Ratings

Operating Temperature	-40°C to +85°C
Maximum System Voltage	1000V DC
Maximum Series Fuse Rating	16A

#### Packing Configuration

Quantity per Cartoon	35 pieces
Quantity per 20' Container	490 pieces
Quantity per 40' Container	1,470 pieces