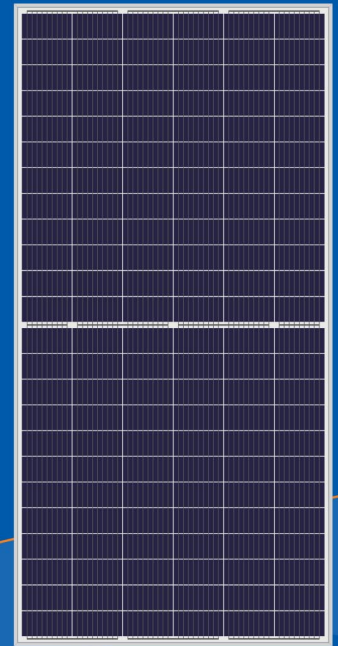


Half-Cell High Efficiency PV Module

158.75^{mm}

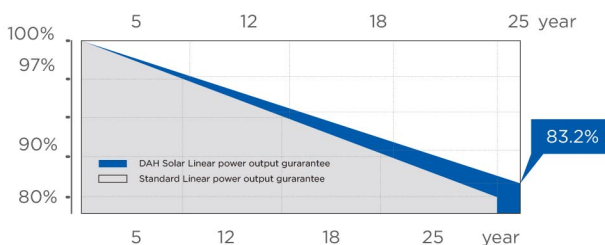
HCP72

345W-355W



QUALITY GUARANTEE

LINEAR POWER OUTPUT GUARANTEE






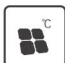


10 years 10-year material & technology warranty

25 years 25-year linear power output warranty

0~+5W
Positive Tolerance

17.63%
Max Module Eff.(%)

PRODUCT PERFORMANCE ADVANTAGE

-  Excellent space utilization performance, increasing power density effectively and reducing costs
-  Reducing the temperature of the solar module hot spot above 20°C, to ensure system stability and reliability
-  Larger size of light receiving area, higher solar panel power, lower system cost
-  Lower temperature coefficient, zero depth reflection increasing
-  More busbars, the less of broken and cracking, as the narrowed cell bus bar width, the light receiving area and power are increased too
-  Reducing the loss of current mismatch and resistance



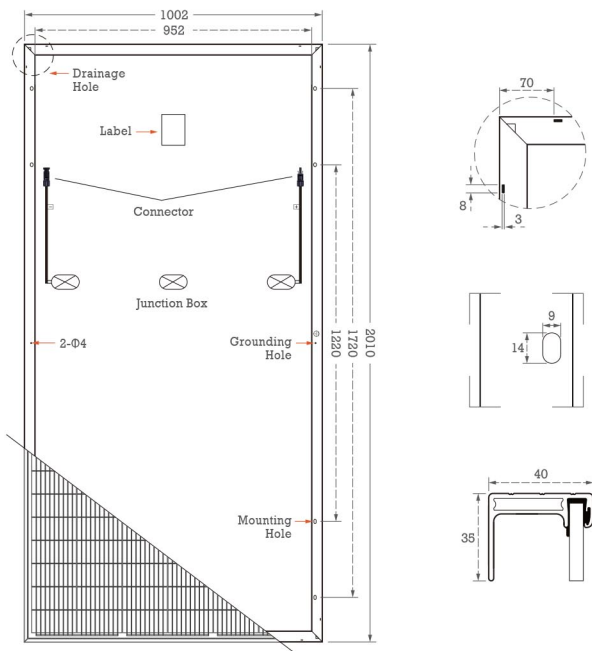
Reliable Quality | Green Our Planet

Office : 24#, Qiyun Road , Hefei, Anhui, China
Mob : +86 181 3007 0283
Mail : info@prosolarpv.com
Website : www.prosolarpv.com

Half-Cell High Efficiency PV Module

HCP72 345W-355W

Design



Mechanical Specification

Cells Type	Poly 158.75×79.375mm
Weight	23kg
Dimension (L×W×T)	2010×1002×40mm
Cable	4.0mm ² ; Portrait: N 400mm /P 300mm, Landscape: N 1400mm /P 1400mm
No.of Cells	144 (6×24)
Glass	3.2 mm High Transmission, Antireflection Coating
Junction box	IP68, 3 Bypass Diodes
Connector	QC4 or MC4 Compatible
Packing	27pcs/pallet, 270pcs/20GP, 638pcs/40HQ

Operating Parameters

Maximum system voltage	1000V/1500V DC
Operating Temperature	-40 ~ +85℃
Maximum series fuse rating	20A
Snow load, frontside	5400Pa
Wind load, backside	2400Pa
Nominal operating cell temperature	45℃±2℃
Application level	Class A

Electrical Characteristics(STC)

Module Type	HCP72-345W	HCP72-350W	HCP72-355W
Maximum Power (P _{max})	345W	350W	355W
Open-circuit Voltage (V _{oc})	46.4V	46.7V	47.0V
Maximum Power Voltage (V _{mp})	37.8V	38.0V	38.2V
Short-circuit Current (I _{sc})	9.59A	9.64A	9.71A
Maximum Power Current (I _{mp})	9.13A	9.22A	9.30A
Module Efficiency (%)	17.13%	17.38%	17.63%
Power Tolerance		0-+5W	
Temperature Coefficient of I _{sc}		0.05%/℃	
Temperature Coefficient of V _{oc}		-0.31%/℃	
Temperature Coefficient of P _{max}		-0.38%/℃	
Standard Test Environment	Irradiance 1000w/m ² , Cell temperature 25℃, Spectrum AM1.5		

Electrical Characteristics(NOCT)

Module Type	HCP72-345W	HCP72-350W	HCP72-355W
Maximum Power (P _{max})	261W	265W	269W
Open-circuit Voltage (V _{oc})	43.7V	44.0V	44.2V
Maximum Power Voltage (V _{mp})	35.7V	35.9V	36.1V
Short-circuit Current (I _{sc})	7.76A	7.83A	7.91A
Maximum Power Current (I _{mp})	7.31A	7.38A	7.45A
Standard Test Environment	Irradiance 800w/m ² , Cell temperature 20℃, Spectrum AM1.5, Wind speed 1m/s		