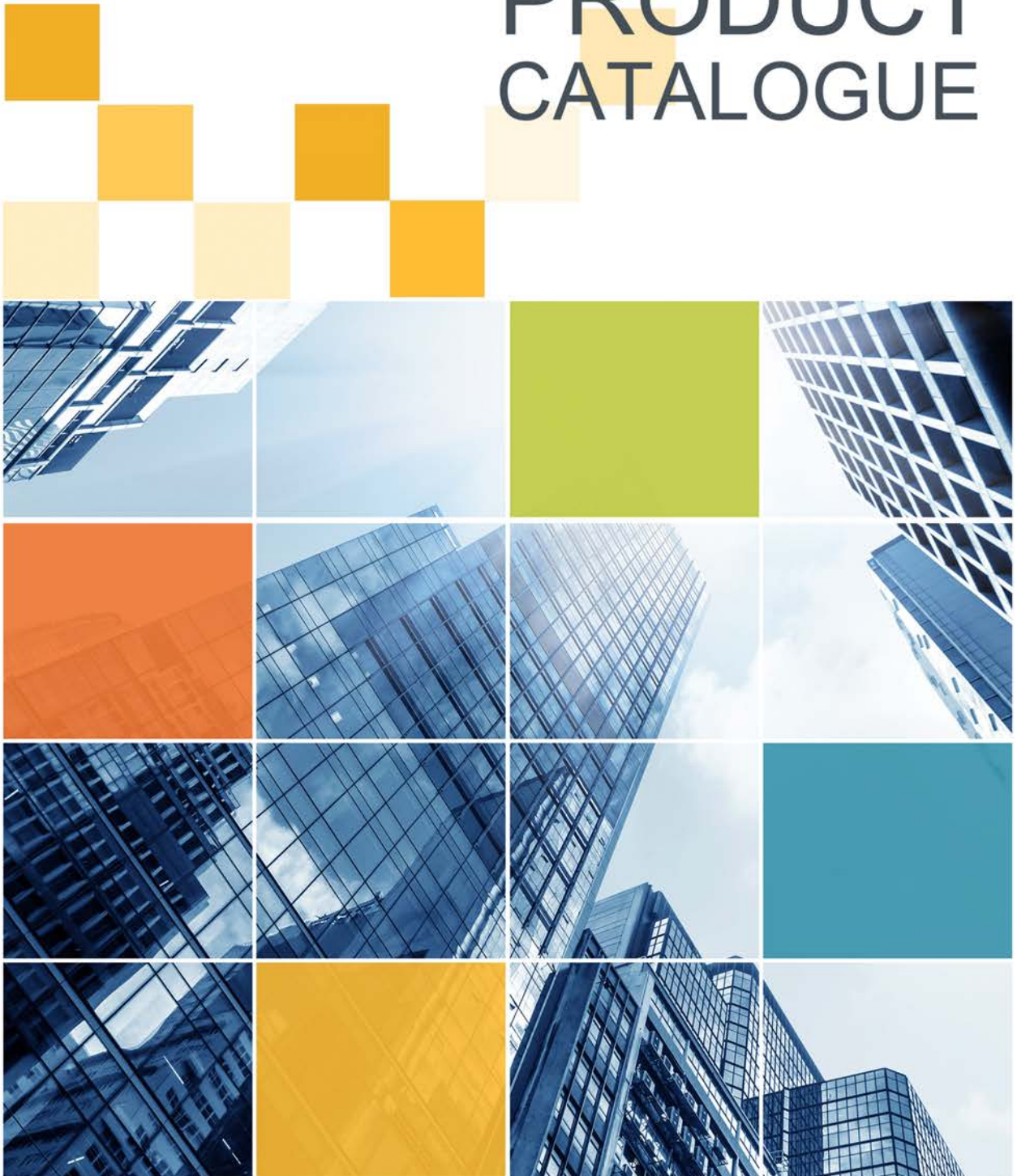




POWER STONE
普尔司通

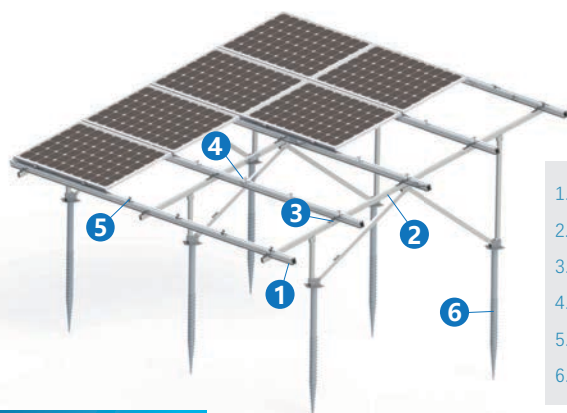
PRODUCT CATALOGUE



CATALOGUE

- 1P | Monolith GA-II AL Double-Post Mounting System
- 2P | Monolith RP-I Metal Roof Solution
- 3P | Monolith GC-II Carbon Steel Double-Post PV Mounting System
- 4P | Monolith SA-II AL Waterproof Carport PV Mounting System
- 5P | Monolith RP-II Tile Roof Solution
- 6P | Monolith RF-I AL Adjustable Tripod Mounting System
- 7P | Monolith RF-II Carbon Steel Tripod Mounting System
- 8P | Monolith AA-I AL Farm PV Mounting System
- 9P | Monolith AA-II FarmI PV Mounting System
- 10P | Frameless Clamp Kits Module
- 11P | Monolith F-I Floating PV Mounting System





1. Rail
2. Pre-assembled support
3. Rail clamp
4. Inter clamp
5. End clamp
6. Ground screw

Structure



1. Girder
2. Girder joint 70
3. Girder joint 140
4. Corrugated U-anchor plate
5. Rectangular tube

Features

- **Highly pre-assembled, Easy & quick installation**
Highly pre-assembled with less components, no additional cutting and drilling, reducing construction difficulty , saving time and project cost greatly.
- **Adaptable and Durable**
High industrial-grade aluminum alloy used for main components, which improves the surface corrosion resistance and long service life according to project requirements.
- **Flexible adjustment, Optimize appearance**
Realize the omni-directional adjustment design according to the terrain, the construction is simple and convenient, the appearance can be optimized perfectly.

Overview

Monolith GA II-AL Double-Post Mounting System, simplified structure with less components, highly pre-assembled features lead to prominent efficiency of on-site installation. Suitable for large, medium and small scale ground solar PV power station. While ensuring the structural strength, the material cost can be reduced to the maximum extent. This support system with better adjustability which can realize the arbitrary adjustment of the front and rear, left and right, up and down directions.



System Parameters

Installation Site	Ground	Design Standard	AS/NZS 1170、ASCE7-10
Tilt Angle	0-60°		JIS C 8955: 2017 International Building code:IBC 2009
Wind Load	60m/s	Material	AL6005-T5(Anodized)
Snow Load	1.6KN/m ²	Fastener	SUS304 & Zinc-Nickel Alloy
Applicable Solar Module	Framed or Frameless	Color	Silver or Customized
Panel Layout	Portrait or Landscape	Warranty	10 Years

⊙ Customized order

⊙ Technical support and installation guidance

⊙ 10 years warranty

⊙ Overseas storage

⊙ Perfect after-sales service

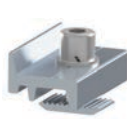
System Component List



End clamp kit
End clamp
W module
Washer
Hexagon socket screw



Inter clamp kit
Inter clamp
W module
Washer
Hexagon socket screw



Rail clamp kit
Rail clamp
Corrugated module
Washer
Hexagon socket screw



Corrugated U-anchor plate



T rail



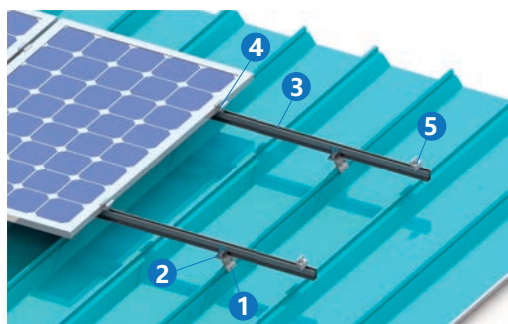
Girder



Rectangular tube



Ground screw



- 1. Color metal roof
- 2. L kits
- 3. Rail
- 4. Inter clamp
- 5. End clamp

Structure



End clamp



Inter clamp



Rail



Kliplok

Features

- **Simple structure, Multiple application**
Few spare parts, simple installation. According to different shape of color metal roof, providing professional customized fixture, making the fixture and color metal roof fitted identically.
- **Reasonable structure, Economical cost**
Professional structural design and system solutions ensure the optimal strength and longest service life of photovoltaic supports.
- **Compatible for various solar modules**
Flexible support for all types of photovoltaic modules.

Overview

Monolith RP-I Metal Roof Solution has simple structure and few spare parts. Mainly used for commercial color metal roof, aluminum alloy kliplok perfected to be used to fix the track and color metal roof, to achieve different conditions of installation requirements. Unique design of accessories can be adapted to a variety of corrugated metal roof, with great flexibility in installation.



System Parameters

Installation Site	Roof	Design Standard	AS/NZS 1170、ASCE7-10
Tilt Angle	0-15°		JIS C 8955: 2017 International Building code:IBC 2009
Wind Load	60m/s	Material	AL6005-T5(Anodized)
Snow Load	1.6KN/m ²	Fastener	SUS304 & Zinc-Nickel Alloy
Applicable Solar Module	Framed or Frameless	Color	Silver or Customized
Panel Layout	Portrait or Landscape	Warranty	10 Years

⊙ Customized order

⊙ Technical support and installation guidance

⊙ 10 years warranty

⊙ Overseas storage

⊙ Perfect after-sales service

System Component List



Multifunctional kliplok



Klip-lok 26



Klip-lok 27



Klip-lok 28

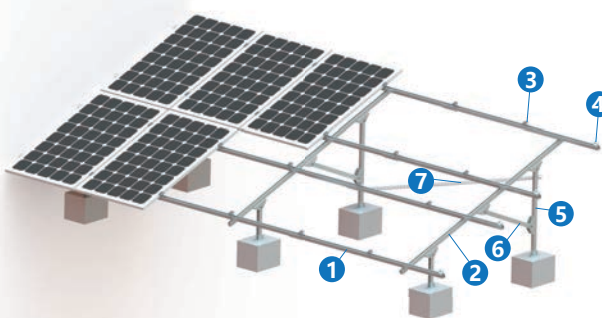


Trapezoidal plate



Standing seam Klip-lok





- 1. Cross Beam
- 2. Girder
- 3. Inter clamp
- 4. End clamp
- 5. Support
- 6. Diagonal support
- 7. Rear diagonal support

Structure



- 1. Girder
- 2. Front & rear post
- 3. Girder joint
- 4. Diagonal support

Features

- **Economical & practical, Quick modular fixation**
Carbon steel material is economical and durable. Beam and girder design with adjustable hole, no additional cutting and drilling result in efficient installation and significantly reduce the construction cost.
- **Longer service life, Efficient power generation**
High quality surface treatment, strong corrosion resistance, apply to long service life. Perfectly adapt to all various of mountain, hilly terrain, with high utilization rate and excellent overall generation efficiency.
- **Outstanding diversity & inclusion**
Multiple foundation options for different terrain which can support with various standard types of PV modules on the market.

Overview

Monolith GC-II Carbon Steel Double-Post PV Mounting System is suitable for Solar PV system for roof or large ground projects. Providing customized solution according to specific project design. The main structure is made of economical carbon steel material, with simple manufacturing process, efficiency production and output capacity. Independent structural design to minimize the installation time, and construction cost.



System Parameters

Installation Site	Roof	Design Standard	AS/NZS 1170、ASCE7-10
Tilt Angle	0-60°		JIS C 8955: 2017 International Building code:IBC 2009
Wind Load	60m/s	Material	Q235B、Q345B(Hot-dip Galvanized)
Snow Load	1.6KN/m ²	Fastener	SUS304 & Zinc-Nickel Alloy & Hot-dip Galvanized
Applicable Solar Module	Framed or Frameless	Color	Silver or Customized
Panel Layout	Portrait or Landscape	Warranty	10 Years

- ⊙ Customized order
- ⊙ Technical support and installation guidance
- ⊙ 10 years warranty
- ⊙ Overseas storage
- ⊙ Perfect after-sales service

System Component List



End clamp kit
End clamp
Rhombus nut
Washer
Hexagon socket screw



Inter clamp kit
Inter clamp
Rhombus nut
Washer
Hexagon socket screw



Cross beam/Girder
Q235B
(Hot-dip galvanized)



Cross beam splice
Q235B
(Hot-dip galvanized)



Girder joint
Q235B
(Hot-dip galvanized)



Support
Q235B
(Hot-dip galvanized)

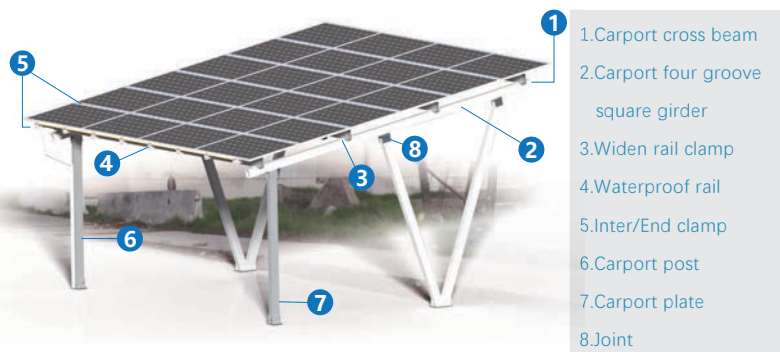


Rear diagonal support
Q235B
(Hot-dip galvanized)



Diagonal support
Q235B
(Hot-dip galvanized)





Structure



Support installation



Cross beam installation



Rail installation

Option: Waterproof Single Double N shape W shape

Features

- **High grade waterproof, Strong stability**
Special waterproof panel & guide rail to ensure the better performance. Compact structure, strong stability.
- **Strong controllability, Easy & quick installation**
Customize solution according to the onsite requirements, utilize the ground area and maximize the revenue to large extent.
- **Simple construction, Strong compatibility**
Fewer types of spare parts, light weight, without large-scale equipment for installation. Easy construction and compatible with various types of photovoltaic modules on the market.

Overview

Monolith SA-II AL Waterproof Carport PV Mounting System, highly versatile for economical floor carport system. Applied to both large commercial and personal residential projects. High quality aluminum components and professional design to ensure the safety of parking vehicles. The design can be customized according to on-site requirements, effectively solve the sun light, snow/wind and other damage to vehicles, while ensuring the benefits of photovoltaic power generation.



System Parameters

Installation Site	Ground	Design Standard	AS/NZS 1170、ASCE7-10
Tilt Angle	0-15°		JIS C 8955: 2017 International Building code:IBC 2009
Wind Load	45m/s	Material	AL6005-T5(Anodized)
Snow Load	1.2KN/m ²	Fastener	SUS304 & Zinc-Nickel Alloy
Applicable Solar Module	Framed or Frameless	Color	Silver or Customized
Panel Layout	Portrait or Landscape	Warranty	10 Years

- Customized order
 Technical support and installation guidance
 10 years warranty
 Overseas storage
 Perfect after-sales service

System Component List



End clamp kit
End clamp
W module
Washer
Hexagon socket screw



Inter clamp kit
Inter clamp
W module
Washer
Hexagon socket screw



Carport plate 160
Spec.
240*156*L160



Carport plate 320
Spec.
240*156*L320



Carport four groove square girder
Spec.
100*140*L



Carport cross beam
Spec.
150*70*L



Joint
Spec.
140*120*L160

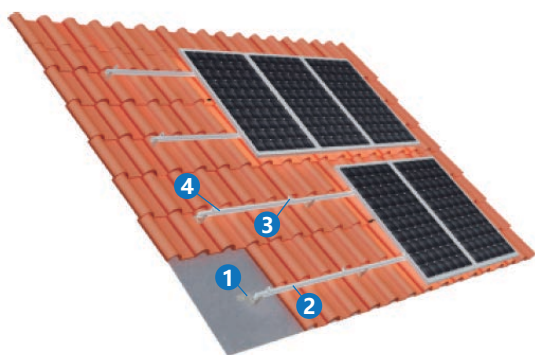


Widen rail clamp
Spec.
L90



Carport post
Spec.
100*140*L90





- 1.Tile roof hook
- 2. Rail
- 3.Inter clamp
- 4.End clamp

Structure



Tile roof hook



End clamp



Inter clamp

Features

- **Easy & quick installation, Cost efficiency**
Simplified structure with less components, no additional cutting and drilling, reducing construction difficulty, saving time and project cost greatly.
- **Adaptable and Applicable**
Apply for a full range of tile roof, including glazed tile, ceramic tile, Roman tile, asphalt shingle tile, etc., with flexible choice of various hooks.
- **Compatible for various solar modules**
Unique design of the clamp can be inserted into the front, the side or any angle to the track, and compatible with various types of photovoltaic modules on the market.

Overview

Monolith RP-II Tile Roof Solution-Tile roof with weak bearing capacity is not suitable for large support. Tile roof hook can perfectly solve the disadvantages, saving installation time and reducing installation cost. The unique design of the accessories can be adapted to a variety of tile or glazed roof, with great flexibility for the installation.



System Parameters

Installation Site	Roof P	Design Standard	AS/NZS 1170、ASCE7-10
Tilt Angle	0°		JIS C 8955: 2017 International Building code:IBC 2009
Wind Load	60m/s	Material	SUS304 & Zinc-Nickel Alloy
Snow Load	1.6KN/m ²	Fastener	SUS304 & Zinc-Nickel Alloy
Applicable Solar Module	Framed or Frameless	Color	Silver or Customized
Panel Layout	Portrait or Landscape	Warranty	10 Years

⊙ Customized order

⊙ Technical support and installation guidance

⊙ 10 years warranty

⊙ Overseas storage

⊙ Perfect after-sales service

System Component List



Tile roof hook PSI



Tile roof hook PSII



Tile roof hook PSIII



Tile roof hook PSIV



Flat tile roof hook PSV



Flat tile roof hook PSVI

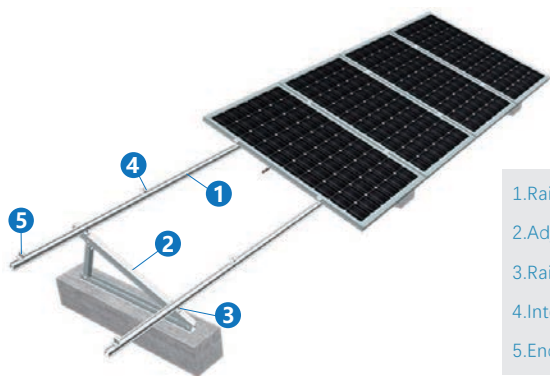


Flat tile roof hook PSVII



Tile roof hook PSVIII





- 1.Rail
- 2.Adjustable tripod
- 3.Rail clamp
- 4.Inter clamp
- 5.End clamp

Structure



- 1.Girder
- 2.Bottom beam
- 3.Plate
- 4.Inner support tube
- 5.Outer support tube

Features

- **Highly pre-assembled, Easy & quick installation**
Simplified structure with less components, no additional cutting and drilling, reducing construction difficulty, saving time and project cost greatly.
- **Adaptable and durable**
The main components are made of industrial-grade high strength aluminum alloy, which can improve the surface corrosion resistance according to the project requirements and have a long service life.
- **Flexible adjustment, Exquisite appearance**
Both landscape & portrait solar module layout are suitable. Installation angle can be adjusted flexibly to meet all customer requirements to a greater extent.

Overview

Monolith RF-I AL Adjustable Tripod Mounting System is suitable for commercial and residential flat roof with highly pre-assembled & economical system. Panels can be placed in horizontal or vertical rows to minimize costs while ensuring structural strength. The support system is adjustable and the component angle can be changed by adjusting the pillar length.



System Parameters

Installation Site	Roof	Design Standard	AS/NZS 1170、ASCE7-10
Tilt Angle	0-60°		JIS C 8955: 2017 International Building code:IBC 2009
Wind Load	60m/s	Material	AL6005-T5(Anodized)
Snow Load	1.6KN/m ²	Fastener	SUS304 & Zinc-Nickel Alloy
Applicable Solar Module	Framed or Frameless	Color	Silver or Customized
Panel Layout	Portrait or Landscape	Warranty	10 Years

- ⊙ Customized order
- ⊙ Technical support and installation guidance
- ⊙ 10 years warranty
- ⊙ Overseas storage
- ⊙ Perfect after-sales service

System Component List



End clamp kit
End clamp
W module
Washer
Hexagon socket screw



Inter clamp kit
Inter clamp
W module
Washer
Hexagon socket screw



Rail clamp kit
Rail clamp
Corrugated clamp
Washer
Hexagon socket screw



Pre-assembled tripod support
Inner support tube
Outer support tube
Bottom beam
Girder



Inner support tube

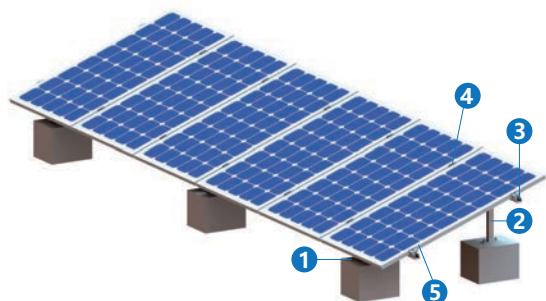


Outer support tube



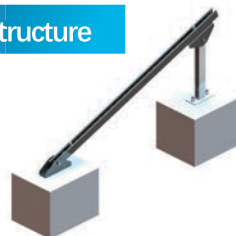
Bottom beam





- 1. Plate
- 2. Support
- 3. Cross beam/Girder
- 4. Inter clamp
- 5. End clamp

Structure



- 1. Plate
- 2. Girder
- 3. Support
- 4. Girder joint

Features

- **Highly pre-assembled, Easy & quick installation**
Support highly pre-assembled with less components, no on-site cutting & drilling request. Easier for on-site construction, saving the time & cost.
- **Adaptable and durable**
High grade industrial aluminum alloy used for main components, can be customized according to project, by changing the ability of corrosion resistance of surface for longer service life.
- **Flexible adjustment, Exquisite appearance**
Both landscape & portrait solar module layout are suitable, the installation angle can be adjusted to satisfy customer to a greater extent.

Overview

Monolith RP-II Carbon Steel Tripod Mounting System is suitable for commercial and residential flat roof system. The main structure is made of economical carbon steel with simplified process, efficiency production and output capacity. The support system with powerful adjustability and convenient construction, which greatly reduces the construction time.



System Parameters

Installation Site	Roof	Design Standard	AS/NZS 1170、ASCE7-10
Tilt Angle	0-40°		JIS C 8955: 2017 International Building code:IBC 2009
Wind Load	60m/s	Material	Q235B、Q345B
Snow Load	1.6KN/m ²	Fastener	SUS304 & Zinc-Nickel Alloy
Applicable Solar Module	Framed or Frameless	Color	Silver or Customized
Panel Layout	Portrait or Landscape	Warranty	10 Years

⊙ Customized order

⊙ Technical support and installation guidance

⊙ 10 years warranty

⊙ Overseas storage

⊙ Perfect after-sales service

System Component List



End clamp kit
End clamp
Rhombus nut
Washer
Hexagon socket screw



Inter clamp kit
Inter clamp
Rhombus nut
Washer
Hexagon socket screw



Girder joint
Q235B
(Hot-dip galvanized)



Cross beam/Girder
Q235B
(Hot-dip galvanized)



Cross beam joint
Q235B
(Hot-dip galvanized)

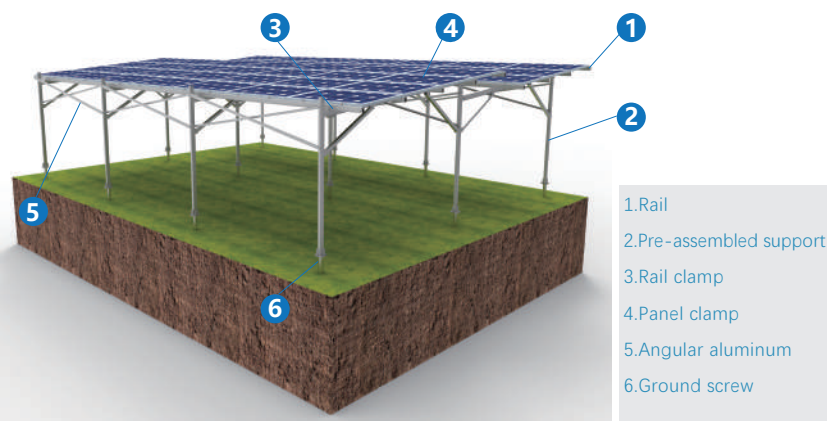


Support
Q235B
(Hot-dip galvanized)



Rear diagonal support
Q235B
(Hot-dip galvanized)





Structure



- Composition:
- 1.Girder
 - 2.Girder joint 90
 - 3.Girder joint 140
 - 4.Corrugated U-anchor plate
 - 5.Rectangular tube
 - 6.Post

Features

• Highly pre-assembled, Easy & quick installation

Highly pre-assembled with less components, no additional cutting and drilling, reducing construction difficulty, saving time and project cost greatly.

• Efficient Utilization

AL Farm PV Mounting System do not occupy cultivated land, and not affect the growth of crops while generating electricity, so as to effectively use land resources.

• Flexible Conditions

Different typesetting solutions of panels on the top of AL Farm PV Mounting system can apply for the lighting demand of various crops.

Overview

Aluminum Farm PV Mounting System with simple structure, less of spare parts. It can effectively improve the installation efficiency of on-site project, and can cover the characteristic toward paddy field, dry field and other agricultural land. It can be insulated from infrared rays during the summer, preventing more heat entering the system. In winter and night, can prevent the interior lights radiating from inside to outside, reducing the rate of temperature decline at night, and play an important role in thermal insulation function. The support system has flexible adjustability, and can be adjusted in front and rear, left and right, up and down random directions.



System Parameters

Installation Site	Ground	Design Standard	AS/NZS 1170、ASCE7-10
Tilt Angle	0-60°		JIS C 8955: 2017 International Building code:IBC 2009
Wind Load	60m/s	Material	AL6005-T5(Anodized)
Snow Load	1.6KN/m ²	Fastener	SUS304 & Zinc-Nickel Alloy
Applicable Solar Module	Framed or Frameless	Color	Silver or Customized
Panel Layout	Portrait or Landscape	Warranty	10 Years

⊙ Customized order

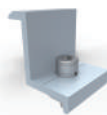
⊙ Technical support and installation guidance

⊙ 10 years warranty

⊙ Overseas storage

⊙ Perfect after-sales service

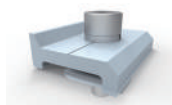
System Component List



End clamp kit
End clamp
W module
Washer
Hexagon bolt



Inner clamp kit
Inner clamp
W module
Washer
Hexagon bolt



Rail clamp kit
Rail clamp
Corrugated module
Washer
Hexagon bolt



Corrugated U-anchor plate
Corrugated gasket
Washer
Hexagon bolt



T rail



Girder

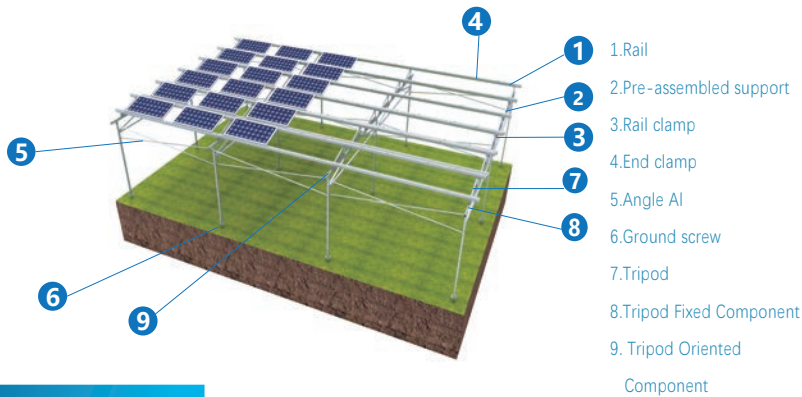


Splice

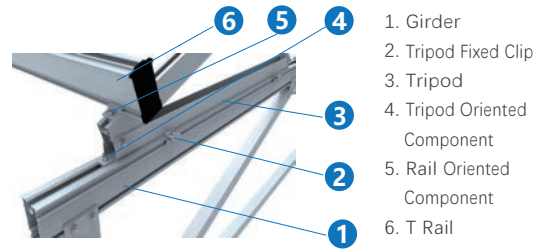


Ground screw





Structure



Features

- Highly pre-assembled, Easy & quick installation**
 The tripod and rail are equipped with positioning fixture, which is convenient and rapid to install on site. The height of the bracket is pre-installed, no need for additional cutting and drilling process, so as to reduce the difficulty of construction, saving time cost and reduce the complete project cost.
- Efficient Utilization**
 AL Farm PV Mounting System do not occupy cultivated land, and not affect the growth of crops while generating electricity, so as to effectively use land resources.
- Favorable Environment**
 Through different layout of design of photovoltaic panels on the top of agricultural greenhouses, the lighting needs of different crops can be met.

Overview

Monolith AA-II Aluminum Farm PV Mounting System with simple structure, fewer spare parts. It can effectively improve the installation efficiency of on-site project, cover the characteristic of paddy field, dry field, and other agricultural lands, with high pre-assembled support. It can be insulated from infrared rays during the summer, preventing more heat from entering the system. In winter and night, can prevent the interior lights radiating from inside to outside, reducing the rate of temperature decline at night. This support system can be adjusted in front & rear, left & right, up & down from random directions.

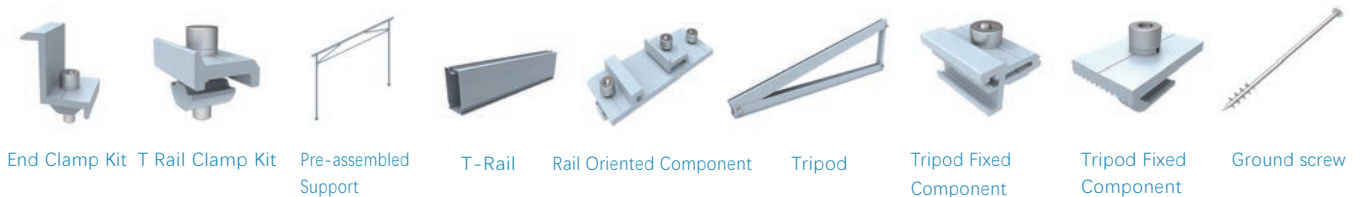


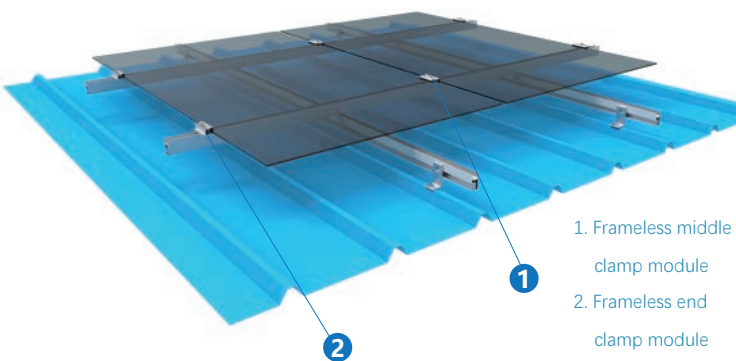
System Parameters

Installation Site	Ground	Design Standard	AS/NZS 1170、ASCE7-10
Tilt Angle	0-60°		JIS C 8955: 2017 International Building code:IBC 2009
Wind Load	60m/s	Material	AL6005-T5(Anodized)
Snow Load	1.6KN/m ²	Fastener	SUS304 & Zinc-Nickel Alloy
Applicable Solar Module	Framed or Frameless	Color	Silver or Customized
Panel Layout	Portrait or Landscape	Warranty	10 years

- ⊙ Customized order
- ⊙ Technical support and installation guidance
- ⊙ 10 years warranty
- ⊙ Overseas storage
- ⊙ Perfect after-sales service

System Component List





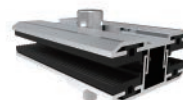
- 1. Frameless middle clamp module
- 2. Frameless end clamp module

Overview

Frameless Clamp Module is a special Clamp for frameless PV panels. Compared with the traditional aluminum panel, the frameless module has a longer service life and higher power generation efficiency, and the superior insulation performance can apply the higher system voltage, so as to reduce the system cost of the power station. In recent years, more and more PV power stations have chosen thin film and frameless modules. In order to follow the stringent installation requirements, Power Stone has developed matching system accessories, facilitating the installation of thin film and frameless modules more convenient, strengthen the system more reliable.



Structure



Frameless middle clamp module



Frameless end clamp module

Features

- **Advanced adaptability & Widely usage**
Widely used in the traditional ground PV system, roof distributed PV system. Compatible with thin film and frameless components produced by majority manufacturers in the market, with limited shielding area and higher power generation efficiency.
- **Covenient installation & Solid structure**
Can realize the horizontal and vertical row, the back to back many varieties of installation pattern, does not depend on the limitation of installation place and mode. Fixed solution does not damage the panel, functioning as solid and reliable.
- **Reasonable structure & Not slip**
Groove design with EPDM rubber pad, is not easy to slip and shift. The force is even after locking, and does not damage the panel glass.

System Parameters

Bracket Type	Limitless	Design Standard	AS/NZS 1170、ASCE7-10
Module Thickness	3~10mm		JIS C 8955: 2017 International Building code:IBC 2009
Wind load	60m/s	Material	AL6005-T5 & EPDM
Snow load	1.6KN/m ²	Fastener	SUS304
Applicable Solar Module	Framless	Color	Silver or Customized
Panel Layout	Portrait & Landscape	Warranty	10 years

⊙ Customized order

⊙ Technical support and installation guidance

⊙ 10 years warranty

⊙ Overseas storage

⊙ Perfect after-sales service

System Component List



Frameless end clamp module
AL6005-T5



Frameless end clamp module
AL6005-T5

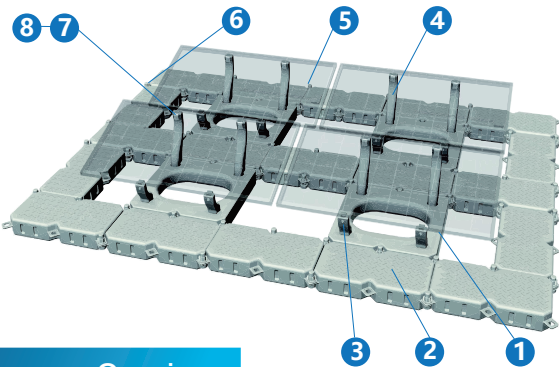


Rubber pad
EPDM



Screw & Block
AL6005-T5
SUS304





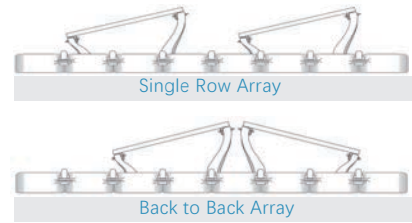
- 1.Main Floater
- 2.Main aisle
- 3.Front support
- 4.Back support
- 5.Plastic bolts and nuts
- 6.Locating pin
- 7.Clamp
- 8.Hexagon Bolts

Overview

Monolith F-I Floating PV Mounting System, it was widely used on water PV power installation, that can economize land resources and has minor influence on water ecological environment. The coverage of water surface can reduce the evaporation loss of water. Water has cooling effect on solar panels, which can inhibit the rise of module temperature, and can increase 10~15% higher power generation than traditional ground or roof PV mounting system.



Structure



Features

- **High efficiency & Low pollution**
The floater is made of High Density PE, this material with its feature as environmental protection without pollution, with the characteristic of sufficient strength and long service life.
- **Convenient installation**
The design can realize symmetrical array, promoting installation capacity and maximize power generation. Unique splice solution assists installation more convenient
- **Easy Maintenance**
Excellent physical ability, the main aisle structure assists maintenance more convenient and efficient.

System Parameters

Installation Site	Lake, Reservoir	Design Standard	AS/NZS 1170、ASCE7-10
Tilt Angle	0°/15°		JIS C 8955: 2017 International Building code:IBC 2009
Wind Load	42m/s	Material	HDPE
Snow Load	1.0KN/m ²	Fastener	SUS304 & HDPE
Applicable Solar Module	Framed or Frameless	Color	Grey or Customized
Panel Layout	Landscape or Symmetrical Facing	Warranty	10 Years

⊙ Customized order

⊙ Technical support and installation guidance

⊙ 10 years warranty

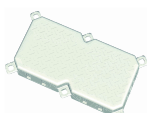
⊙ Overseas storage

⊙ Perfect after-sales service

System Component List



Main Floater
Material HDPE



Front Support
Material HDPE



Back Support
Material HDPE



Main Aisle
Material HDPE



Plastic Bolts
Material HDPE



Locating Pin
Material HDPE



Clamp
AL6005-T5



Bolt
SUS304





普尔司通
POWER STONE

Standard product unit price

	Product Type	Low wind and snow design conditions (wind speed \leq 34m/s; snow thickness \leq 50cm) (USD/W)	Middle wind and snow design condition (34m/s $<$ WS $<$ 38m/s; 50cm $<$ ST $<$ 100cm) (USD/W)	High wind and snow design conditions (WS \geq 38m/s/ ST \geq 100cm) (USD/W)
Ground Type	Carbon Steel Double-Post PV Mounting System	0.0463 ~ 0.0694	0.0540 ~ 0.0848	0.0694 ~ 0.1002
	Carbon Steel Single-Post PV Mounting System	0.0540 ~ 0.0771	0.0617 ~ 0.0925	0.0771 ~ 0.1079
	Aluminium Double-Post PV Mounting System	0.0540 ~ 0.0694	0.0617 ~ 0.1002	0.0848 ~ 0.1156
	Aluminium Single-Post PV Mounting System	0.0617 ~ 0.0848	0.0694 ~ 0.1079	0.0925 ~ 0.1234
Car Park Type	Aluminium Carport PV Mounting System	0.1002 ~ 0.1311	0.1156 ~ 0.1465	0.1311 ~ 0.1927
Farm Type	Aluminium Farm PV Mounting System	0.0848 ~ 0.1388	0.1002 ~ 0.0154	0.1156 ~ 0.2159
Roof Type	Double-Post PV Mounting System	0.0339 ~ 0.0540	0.0432 ~ 0.0617	0.0586 ~ 0.0925
	Aluminium Tripod Mounting System (without load plate)	0.0308 ~ 0.0540	0.0416 ~ 0.0694	0.0540 ~ 0.0925
	Aluminium Tripod Mounting System (with load plate)	0.0570 ~ 0.0771	0.0617 ~ 0.1002	0.0694 ~ 0.1234
	Aluminium Adjustable Tripod Mounting System	0.0308 ~ 0.0540	0.0385 ~ 0.0617	0.0000 / 0.0000
	Pitched roof Clamp(with rails)	0.0200 ~ 0.0385	0.0200 ~ 0.0385	0.0200 ~ 0.1234
	Pitched roof Clamp(without rails)	0.0108 ~ 0.0278	0.0108 ~ 0.0278	0.0108 ~ 0.0278
	Tin Roof Solution	0.0200 ~ 0.0385	0.0200 ~ 0.0385	0.0200 ~ 0.0385
	Tile Roof Solution	0.0200 ~ 0.0463	0.0200 ~ 0.0463	0.0200 ~ 0.0463

Note: The above EXW unit prices are for reference only, the transaction price is subject to changes of exchange rates, project characteristics, etc.

CONTACT US

POWER STONE (XIAMEN) TECHNOLOGY CO.,LTD

Add: Unit 2101,Xinyi International
Center, No.3911,Huandao East Road,
Siming District,Xiamen,361008

Tel: +86-592 5927399 ext.805
Web: www.powerstone-tec.com