

# HT60-166M

Shanghai Aerospace Automobile  
Electromechanical Co., Ltd.  
website: www.ht-saae.com

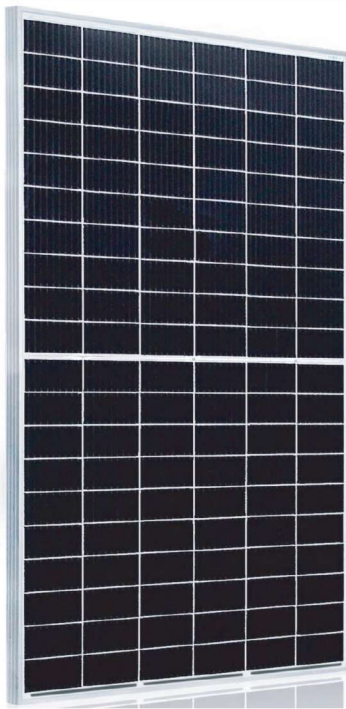


Factory:  
Lianyungang ShenZhou New Energy Co., Ltd.  
Turkey HT Solar Energy Joint Stock Company

**NEW**

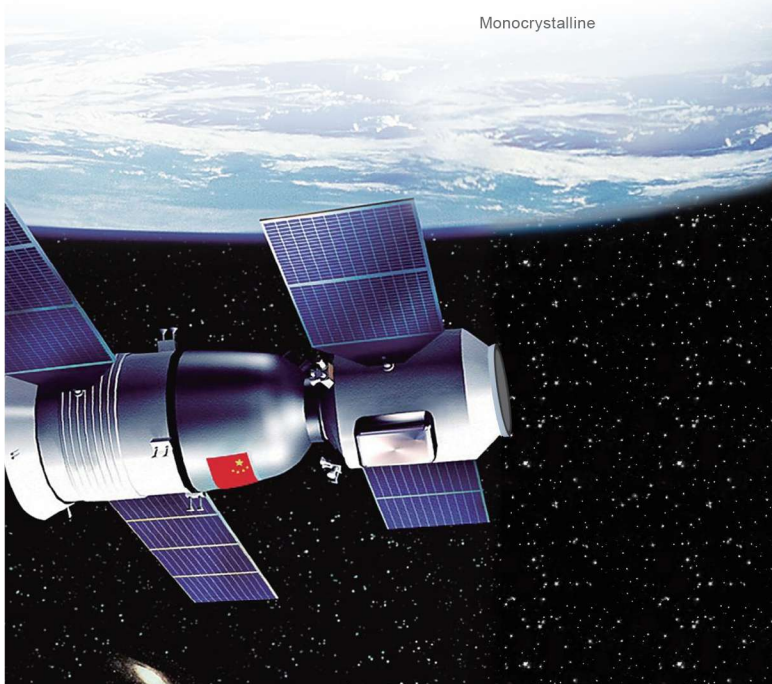
Big Size: Cell 166\*83

**370W / 375W**  
**380W / 385W / 390W**



- Module Efficiency: 21.4%
- No. of Cells: 120 (6 × 20)
- Weight: 19.5kg
- Dimensions: 1755mm×1038mm×30mm

Monocrystalline



MULTIWAY+



**Half cut cell technology can reduce the internal power loss and improve component overall power. Excellent heat dissipation avoids hot spot production.**



**9BB The optimized number and width of main gate lines, Maximize the light receiving area of components and Reduce component power consumption**

**25Ys  
Products  
Warranty**



**Designed for high voltage systems of up to 1500 VDC, increasing the string length of solar systems and saving on BoS costs**

**25Ys  
Warranty on  
power output**



**All the modules are sorted and packaged by amperage, reducing mismatch losses and maximizing system output.**

**EL**

**Microcrack resistant enhance reliability, triple EL tested of high quality control.**

**5W**

**Positive tolerance 0/+5w guaranteed**



**Entire module certified to with stand extreme wind (2400 Pa) and snow loads (5400 Pa)**

**PID**

**PID Resistant**

**Comprehensive and first-rate certification system**

IEC61215: 2016, IEC61730: 2016 Latest Standard  
ISO9001, ISO14001 and ISO45001,  
meeting the highest international standards  
Strict quality control

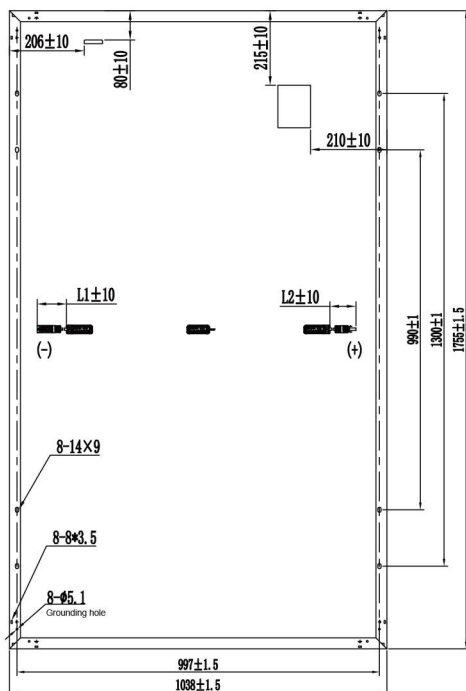


CEC Listed



Bloomberg  
TIER 1

### Engineering Drawing



### Electrical Characteristics

Module	HT60-166M				
Maximum Power at STC(Pmax)	370W	375W	380W	385W	390W
Open-Circuit Voltage(Voc)	41.5V	41.6V	41.7V	41.5V	41.7V
Short-Circuit Current(Isc)	11.72A	11.85A	11.98A	11.83A	11.92A
Optimum Operating Voltage (Vmp)	34.1V	34.2V	34.6V	35.0V	35.2V
Optimum Operating Current(Imp)	10.86A	10.98A	10.99A	11.01A	11.09A
Module Efficiency	20.3%	20.6%	20.9%	21.1%	21.4%
Power Tolerance	0 ~ +5W				
Maximum System Voltage	1500V DC(IEC)				
Maximum Series Fuse Rating	20A				
Operating Temperature	-40 °C to +85 °C				

\*STC: Irradiance 1000W/m<sup>2</sup>, module temperature 25, AM=1.5  
Optional black frame or white frame module according to customer requirements

### NMOT

Module	HT60-166M				
Maximum Power	274W	278W	281W	286W	290W
Open Circuit Voltage (Voc)	39.2V	39.3V	39.4V	39.3V	39.5V
Short Circuit Current (Isc)	9.46A	9.57A	9.67A	9.55A	9.62A
Maximum Power Voltage (Vmp)	32.2V	32.3V	32.4V	33.2V	33.4V
Maximum Circuit Current (Imp)	8.51A	8.61A	8.67A	8.61A	8.68A
NMOT	45°C±2°C				

\*NMOT: Irradiance 800W/m<sup>2</sup>, ambient temperature 20°C, wind speed 1 m/s

### Mechanical Characteristics

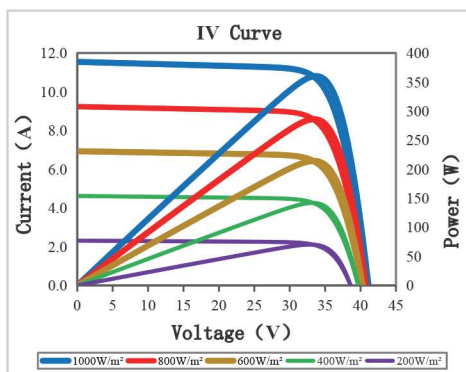
Solar Cells	Monocrystalline 166 × 83 mm
No. of Cells	120 (6 × 20)
Dimensions	1755mm×1038mm×30mm
Weight	19.5 kg
Front Glass	High transmission tempered glass
Frame	Anodized aluminium alloy
Junction Box	IP68
Cable	4mm <sup>2</sup> (IEC) Length: (+)200mm,(-)300mm
Connectors	MC Compatible
Packaging Configuration	36pcs / box, 936pcs / 40'HQ Container

### Temperature Characteristics

Temperature Coefficient of Pmax	γ (Pm)	-0.39%/K
Temperature Coefficient of Voc	β (Voc)	-0.29%/K
Temperature Coefficient of Isc	α (Isc)	0.049%/K

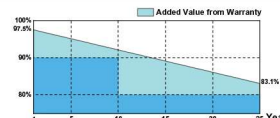
### I-V Curves

Current-Voltage & Power-Voltage Curve



### Warranty

25-year product warranty  
25-year warranty on power output  
Specific information is referred to the product quality guarantee



### Information Box

DS166-002-A0