

SINGLE PILE MOUNTING SYSTEM FOR FIELD APPLICATIONS

M-FS-102P

*2 Panels in Height
Portrait Layout*

TECHNICAL FEATURES

Application For panels of any dimension and type-Adaptable to any ground and slope.

Materials Aluminum and galvanized steel.

Accessories Aluminum, galvanized and/or stainless steel.

Inclination 20° - 25° - 30°, upon request.

Orientation Portrait.

Dimensions (limit) Unlimited extension of table length / Usually up to 40m in length.

PV Modules Up to 2,5m in length/Special accessories for bifacial panels/Ability for further PV equipment on main structure.

Foundation Pile ramming/Piles in holes filled with concrete/Piles in concrete blocks.

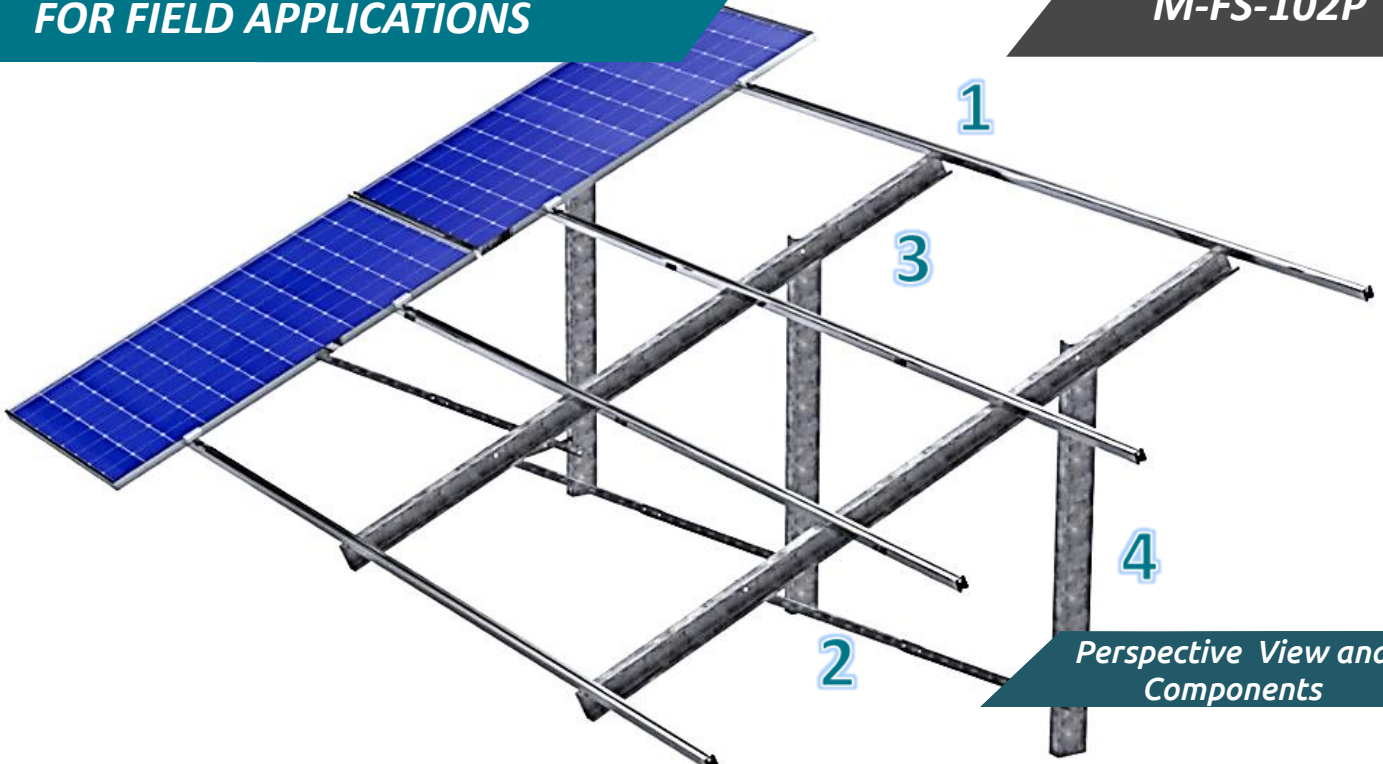
Wind load (limit) 33 m/s (Terrain Category I).

Snow load (limit) 1,7 kN/m² (Zone C).

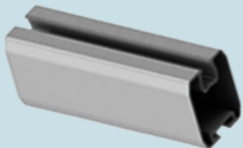
Slopes (limit) Normal design: ±15% E-W, -5% S-N. Special: ±35% E-W, 25% S-N.
Slopes smooth, each structure w/steady slopes.

SINGLE PILE MOUNTING SYSTEM FOR FIELD APPLICATIONS

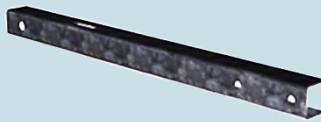
M-FS-102P



*Perspective View and
Components*



1. PV RAIL



2. 'U' BEAM



3. INCLINED BEAM



4. PILE

