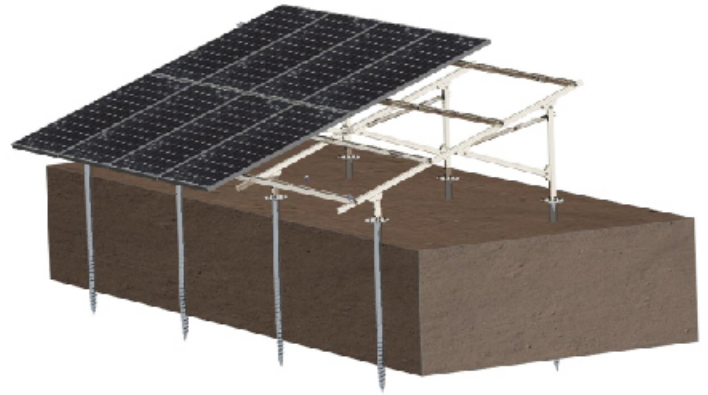


# GROUND STEEL MOUNTING SYSTEM CS-GM-Ground Screw Pile

## ● Brief Introduction

- 1) Most suitable to clay area. Screw pile is piling into ground with strong viscosity.
- 2) With great stability.
- 3) Applies to high wind and heavy snow regions.
- 4) Concrete foundation can be acceptable
- 5) Parts are high pre-assembled in factory to save the installation time and labor cost.



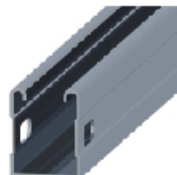
### Technical Parameters:

Application:	Ground Open Area/ Concrete Flat Roof
Tilt:	0°- 50°
Module Layout:	Landscape or Portrait
Wind Load:	≤60m/s
Ground Clearance:	0.5m-1.5m
Snow Load:	0.5kn/m <sup>2</sup> -2.0kn/m <sup>2</sup>
Design Criteria:	ISO9001; CE; SGS; JIS8955: 2017
Material:	Q235 (Hot dip galvanized); SUS304

## ● Component Parts



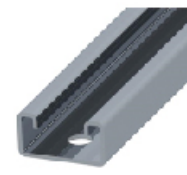
Cross Beam



Vertical Beam



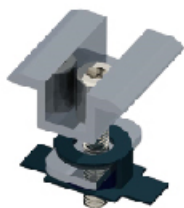
Beam Connector



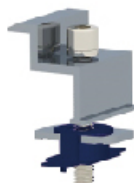
EW Backing Rod



Ground Screw Pile



Mid Clamp Kits



End Clamp Kits



Foot Base



Triangle Fastener

# CS-GM-Ground Screw Pile

**A Type**



**W Type**



## ● Detailed View

