

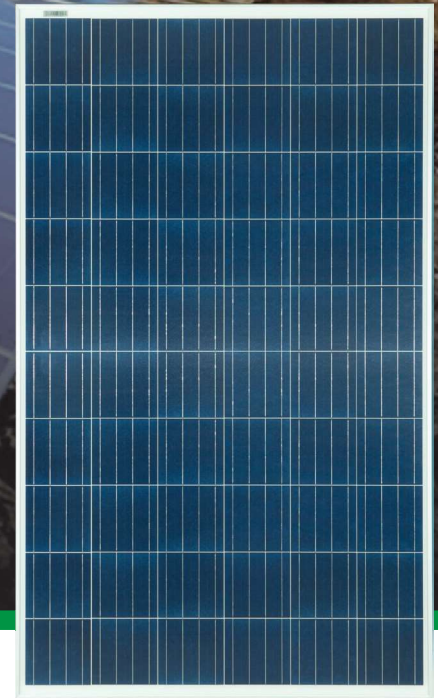
Poly

60 CELL
POLYCRYSTALLINE MODULE

260-280W
POWER OUTPUT RANGE

17.10 %
MAXIMUM EFFICIENCY

-0 / +5W
POSITIVE POWER TOLERANCE



Well-rounded design with versatile application and excellent performance

- 1500V_{dc} system voltage.



Design promotes efficiency and savings

- Low first-year power degradation.
- PID resistant.
- Convert more sunlight into electricity over a given area to provide more savings over time.



Highly reliable quality

- Comprehensive in-house tests.
- 100% EL double inspection ensuring defects-free module.
- Manufactured with cutting edge technology to increase product output consistency.



Certified to withstand the most challenging environmental conditions

- 2400 Pa negative load.
- 5400 Pa positive load.

SOLAR QUEST, established in 2019, is a trademark by PT. Deltamas Solusindo. The company is devoted to be a total solution provider for energy efficiency and solar-powered clean energy generation. SOLAR QUEST is the national PV module from Indonesia with superior quality; providing reliability and profitability the customers rely on. With focus on solar-powered Renewable Energy expansion, the company encourages communities into the era of clean energy; in the same time collaborating with distributors, installers, developers, and other partners to distribute its solution to residential, commercial and utility base customers locally and internationally.

Comprehensive Products And System Certificates

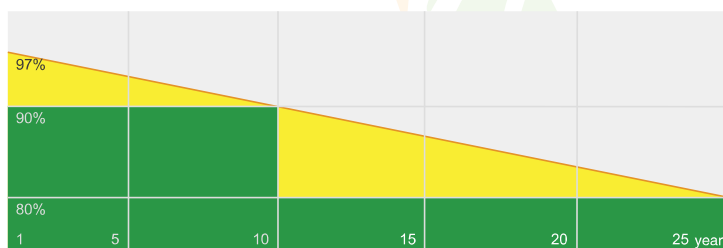
ISO 9001:2015 / Quality Management System
 ISO 14001:2015 / Environmental Management System
 OHSAS 18001:2007 / Occupational Health & Safety Management System

IEC 61215:2016 / IEC 61730:2016
 Indonesian National Standard (SNI)
 Local Content Level (TKDN)



Linear Power Warranty

10-year product warranty 25-year linear power output warranty



■ SQ Linear Power Warranty ■ Industry Warranty

ELECTRICAL DATA at STC*

		SQZA260P-60	SQZA270P-60	SQZA280P-60
Nominal Power - P_{MAX}	Wp	260	270	280
Power Tolerance	W	-0 / +5	-0 / +5	-0 / +5
Nominal Power Voltage - V_{MP}	V	31.2	32.1	32.8
Nominal Power Current - I_{MP}	A	8.35	8.42	8.55
Open Circuit Voltage - V_{OC}	V	38.10	38.30	38.70
Open Circuit Current - I_{SC}	A	8.85	8.89	8.99
Module Efficiency	%	15.90	16.50	17.10

* STC : Standard Test Conditions (Light Spectrum AM 1.5, Irradiance 1000 W/m², Temperature 25 °C)

ELECTRICAL DATA at NMOT**

		208	216	224
Nominal Power - P_{MAX}	Wp	208	216	224
Power Tolerance	W	-0 / +5	-0 / +5	-0 / +5
Nominal Power Voltage - V_{MP}	V	30.2	31.0	31.8
Nominal Power Current - I_{MP}	A	6.90	6.97	7.05
Open Circuit Voltage - V_{OC}	V	37.5	37.8	38.1
Open Circuit Current - I_{SC}	A	7.39	7.45	7.51
NMOT	°C	43±2	43±2	43±2

** NMOT : Nominal Module Operation Temperature (Light Spectrum AM 1.5, Irradiance 800 W/m², Temperature 20 °C)

MECHANICAL DATA

Module Dimensions	1650 x 995 x 37 mm
Weight	15.5 kg
Solar Cells	Polycrystalline 156.75 × 156.75 mm
Cell Arrangement	3 Strings of 20 Cells
Glass	3.2 mm Thick Anti-Reflection Solar Glass
Backsheet	Highly Resistant Polyester
Frame	Clear Anodic Coated Aluminum
J-Box	IP67
Cables	1 × 4.0 mm ² Solar Cable
Connectors	ST4 or Factory-Installed Compatible

TEMPERATURE RATINGS

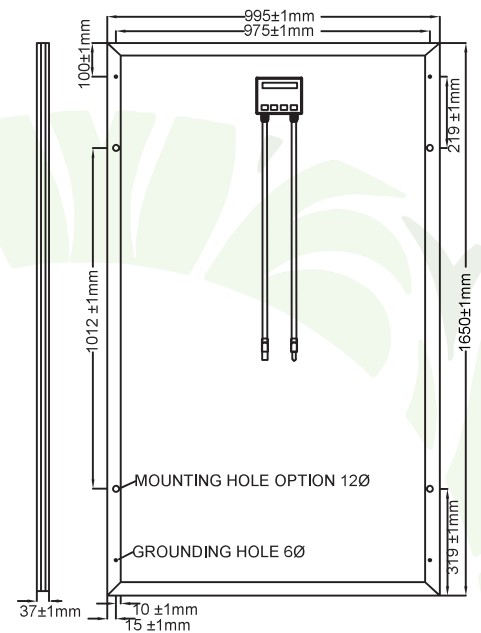
Temperature Coefficient of P_{MAX}	-0.38% / °C
Temperature Coefficient of V_{OC}	-0.33% / °C
Temperature Coefficient of I_{SC}	0.05% / °C

(DO NOT connect Fuse in Combiner Box with two or more strings in parallel connection)

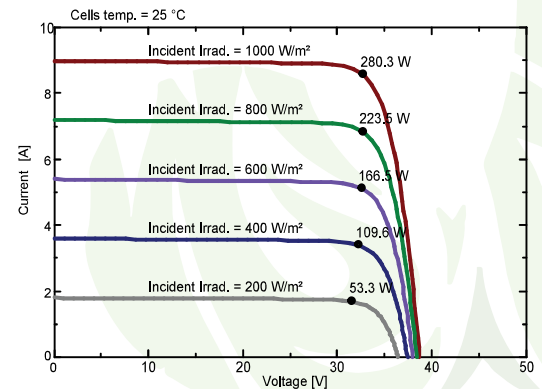
MAXIMUM RATINGS

Operational Temperature	-40 ~ +85 °C
Maximum System Voltage	1500 V _{DC} (IEC)
Max Series Fuse Rating	15 A

DIMENSIONS OF PV MODULE



I-V Curve at Standard Test Condition



Data Sheets are subject to change without notice