

HITOUCH 4

PRODUCTS

CSP17-72HT

POWER RANGE

430-450W



Higher Power Output

- Higher module conversion efficiency benefit from bigger wafer 166mm and half-cell structure.
- 9BB(busbar) technology enhance stronger current collection with lower series resistance.
- Reduce losses of current mismatch.



Excellent Temperature Coefficient

- Higher power yield with lower operating temperature coefficient.
- Enables better output in hot weather conditions.
- Better performance in weak light conditions.



Higher reliability

- Positive loading 5400 Pa on front side and 2400 Pa loading on back side.
- Split-type junction box design to guarantee reliability and safety during project operation.
- Excellent anti-PID performance to guarantee safe and reliable operation in extreme weather condition.



Lower Hot Spot and Crack Risk

- Reduce hot-spot risk with optimized electrical design and lower operating current.
- crack risk limitation with help of 9BB solar cell design.
- Better anti-shading performance.



Bifacial value-added

- Extra power output up to 30% from rear side generation.
- 12years mechanical guarantee, 30years power output warrantee.
- Elegant visual appearance and application scenarios.

BIFACIAL

ADDITIONAL POWER BENEFIT

9BB

MULTIPLE BUSBAR TECHNOLOGY

20.7%

MAXIMUM EFFICIENCY

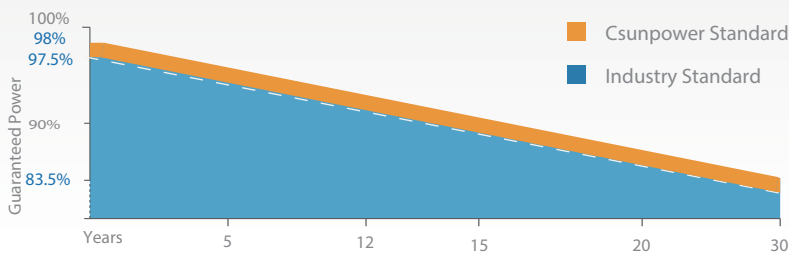
12 YEARS

HARDWARE WARRANTY

Founded in 2004, CSUNPOWER(CP) is one of the leading comprehensive solar energy solution providers in the world. We are specialized in high efficient solar module research, manufacturing and distribution as well as solar project development, EPC and O&M business. Till the end of 2020, we accumulatively distributed more than 10GW solar modules to 50countries, developed and built 500MW+ solar projects in Asia Pacific region.

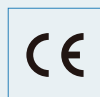
Performance Warranty

12 Year Product Warranty · 30 Year Power Warranty

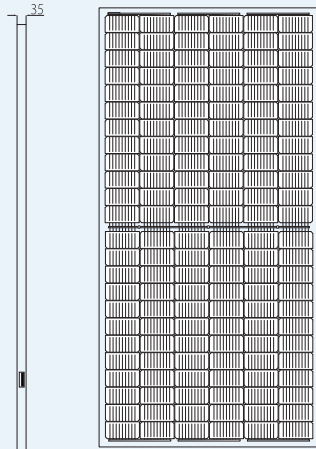


From the 2nd year to the 30th year, the average annual power decline will be no more than 0.5%.

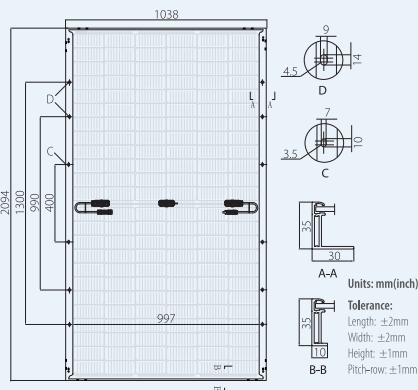
Comprehensive Products and System Certificates



DIMENSIONS OF PV MODULE(mm)

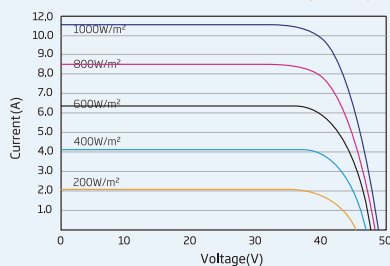


Front View

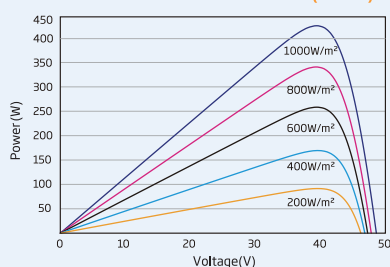


Back View

I-V CURVES OF PV MODULE(435 W)



P-V CURVES OF PV MODULE(435W)



Electrical performance (STC)

Maximum Power (Pmax)	430	435	440	445	450
Maximum Power Voltage (Vmp)	40.59	40.76	40.95	41.14	41.32
Maximum Power Current (Imp)	10.62	10.68	10.75	10.83	10.90
Open-circuit Voltage (Voc)	48.89	49.07	49.23	49.50	49.69
Short-circuit Current (Isc)	11.24	11.31	11.40	11.47	11.53
Module Efficiency(%)	19.80%	20.0%	20.2%	20.50%	20.70%

STC: Irradiance 1000W/m², Cell Temperature 25°C, Air Mass AM1.5.

*Measuring tolerance: ±3%.

BI-FACIAL OUTPUT - Backside Power Gain (reference to 445W front)

Maximum Power (Pmax)	467	490	512	535	556
Maximum Power Voltage (Vmp)	41.1	41.2	41.2	41.3	41.3
Maximum Power Current (Imp)	11.34	11.86	12.40	12.97	13.51
Open-circuit Voltage (Voc)	49.4	49.4	49.5	49.5	49.5
Short-circuit Current (Isc)	12.10	12.68	13.26	13.83	14.39
Pmax Gain (%)	5%	10%	15%	20%	25%

ELECTRICAL DATA (NMOT)

Maximum Power (Pmax)	322	325	329	334	336
Maximum Power Voltage (Vmp)	38.0	38.1	38.2	38.3	38.5
Maximum Power Current (Imp)	8.50	8.55	8.61	8.65	8.71
Open-circuit Voltage (Voc)	46.1	46.1	46.2	46.3	46.4
Short-circuit Current (Isc)	9.10	9.17	9.23	9.30	9.37

NMOT: Irradiance at 800W/m², Ambient Temperature 20°C, Wind Speed 1m/s.

MECHANICAL DATA

Solar Cells	Monocrystalline PERC
Cell Orientation	144 [2 x (12 x 6)]
Module Dimensions	2094*1038*35mm
Weight	27.5kg
Glass	2.0mm (0.13 inches), High Transmission, AR Coated Heat Strengthened Glass
Encapsulant Material	POE/EVA
Backsheet	2.0mm (0.13 inches), High Transmission, Strengthened Glass
Frame	35 mm Anodized Aluminium Alloy
J-Box	IP68
Output Cables (Including Connector)	4.0mm ² (0.006 inches ²), Length: 300mm (can be customized)
Connector	MC4/MC4 Compatible

TEMPERATURE RATINGS

NMOT (Nominal Module Operating Temperature)	41 C (±3 C)
Temperature Coefficient of Pmax	-0.35%/C
Temperature Coefficient of Voc	-0.27%/C
Temperature Coefficient of Isc	+0.04%/C

(Do not connect Fuse in Combiner Box with two or more strings in parallel connection)

WARRANTY

12 year Product Workmanship Warranty
 30 year Power Warranty

MAXIMUM RATINGS

Operational Temperature	-40~+85 C
Maximum System Voltage	1500V DC (IEC)
	1500V DC (UL)
Maximum rated current series	20A

PACKAGING CONFIGURATION

Modules per box: 31 pieces
 Container : 682 pieces