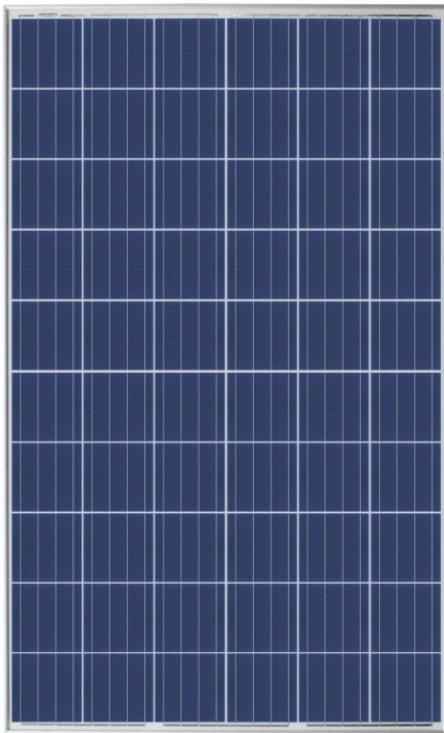
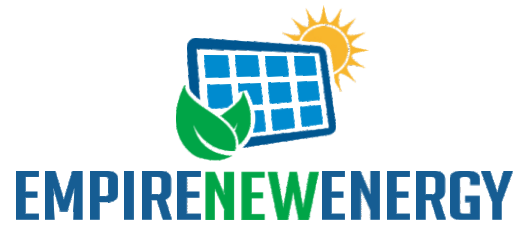
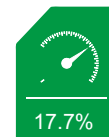


EMP-\*\*\*P60A  
 POWER OUTPUT RANGE  
**270-290**



POWER TOLERANCE



MAXIMUM EFFICIENCY



• Increased module robustness to minimize micro-cracks



Pass class C fire test



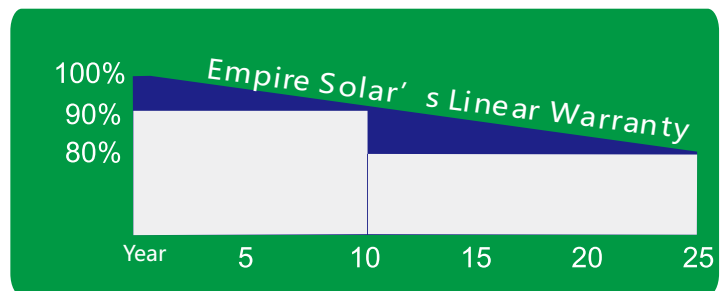
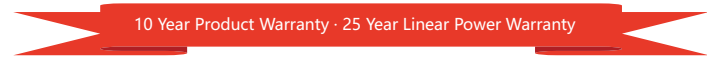
25 Year Linear Power Warranty

Comprehensive Products And System Certificates

IEC61215/IEC61730/UL1703/IEC61701/IEC62716  
 ISO 9001: Quality Management System  
 ISO 14001: Environmental Management System  
 OHSAS 18001: Occupation Health and Safety Management System



LINEAR PERFORMANCE WARRANTY





## EMP-(270-290)P60A

### ELECTRICAL DATA (STC)

Peak Power Watts-PMAX (Wp)	270	275	280	285	290
Power Tolerance	±3%				
Binning Tolerance	0~+5				
Maximum Power Voltage-VMPP (V)	31.3V	31.7V	32.0V	32.3V	32.6V
Maximum Power Current-IMPP (A)	8.63A	8.69A	8.76A	8.83A	8.90A
Open Circuit Voltage-VOC (V) (±2%)	38.5V	38.6V	38.7V	38.8V	38.9V
Short Circuit Current-ISC (A) (±2%)	9.09A	9.20A	9.32A	9.43A	9.54A
Module Efficiency (%)	16.4%	16.8%	17.1%	17.4%	17.7%

STC: Irradiance 1000W/m<sup>2</sup>, Cell Temperature 25°C, Air Mass AM1.5

### MECHANICAL DATA

Solar Cells	Multicrystalline 156.75 × 156.75 mm (6 inches)
Cell Orientation	60 cells (6 × 10)
Module Dimensions	1650×992×35/40mm
Weight	18.5kg/20kg
Glass	3.2 mm (0.13 inches), High Transmission, AR Coated Tempered Glass
Backsheet	White
Frame	Silver Anodized Aluminium Alloy
J-Box	IP 65 or IP 67 rated
Cables	Photovoltaic Technology Cable 4.0 <sup>2</sup> mm (0.006 inches)
Connector	T01

### TEMPERATURE RATINGS

Temperature Coefficient of Pmax	-0.350%/°C
Temperature Coefficient of Voc	-0.350%/°C
Temperature Coefficient of Isc	0.058%/°C

### MAXIMUM RATINGS

Operational Temperature	-40+85°C
Maximum System Voltage	1000V
Max Series Fuse Rating	15A

(DO NOT connect Fuse in Combiner Box with two or more strings in parallel connection)

### WARRANTY

10 year Product Workmanship Warranty  
25 year Linear Power Warranty

### PACKAGING CONFIGURATION

Modules per box: 30pcs/27pcs  
Modules per 40' container: 840 pcs/756pcs  
Modules per 35' container: 896 pcs/812pcs

