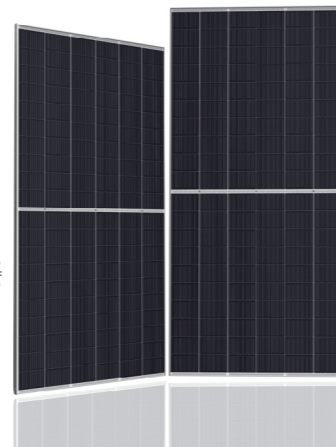
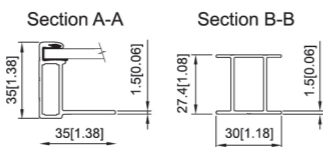
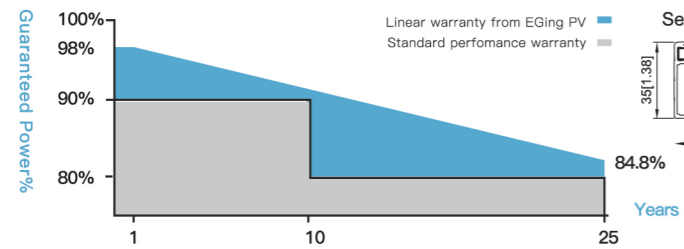


PRODUCT INTRO

BfMd Series

MONO CRYSTALLINE SOLAR MODULE

585W~605W



QUALITY GUARANTEED

- ① Linear output power guaranteed
- ② 10 years product warranty
- ③ 25 years linear power output






High Efficiency

Advanced solar cell technology ensures the high module efficiency up to 21.4%.




Positive Power Selection

Module will generate power selection of 0 to +5W.




Strong Load Capacity

Module is capable to withstand 2400Pa wind loads and 5400Pa Snow loads.



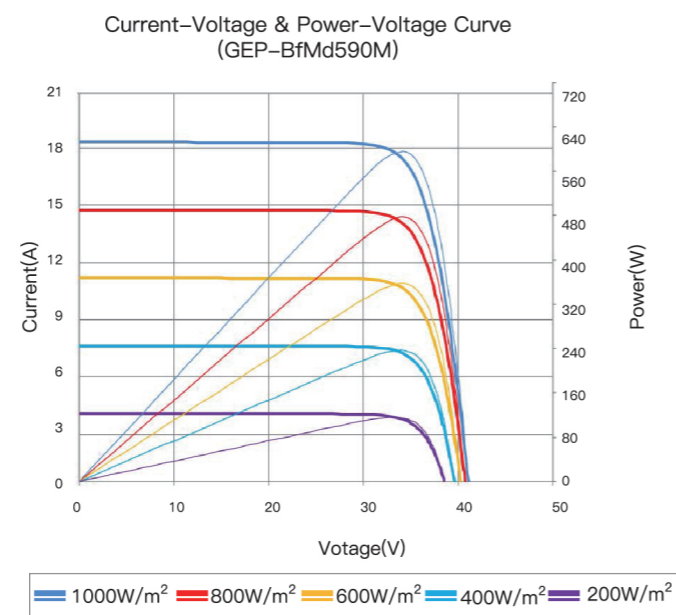
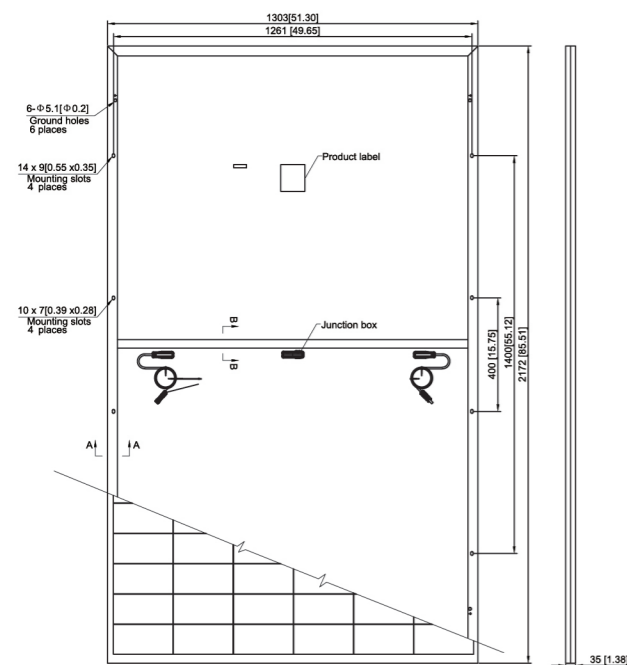
Reliable quality

Module is manufactured in accordance with international quality standards ISO9001



Higher Weatherproof Rating

J-Box performs module with an environmental protection rating to IP68.



MODULE CHARACTERISTICS

Models	GEP-BfMd585M	GEP-BfMd590M	GEP-BfMd595M	GEP-BfMd600M	GEP-BfMd605M
	GEP-BfMd585MH	GEP-BfMd590MH	GEP-BfMd595MH	GEP-BfMd600MH	GEP-BfMd605MH
Maximum Power (Pmax)	585W	590W	595W	600W	605W
Positive Power Selection	0/+5W	0/+5W	0/+5W	0/+5W	0/+5W
Maximum Power Voltage (Vmp)	33.8V	34.0V	34.2V	34.4V	34.6V
Maximum Power Current(Imp)	17.31A	17.35A	17.40A	17.44A	17.49A
Open Circuit Voltage (Voc)	40.9V	41.1V	41.3V	41.5V	41.7V
Short Circuit Current (Isc)	18.37A	18.42A	18.47A	18.52A	18.57A
Module Efficiency	20.7%	20.9%	21.0%	21.2%	21.4%
Operating module Temperature	- 40°C ~ +85°C				
Maximum system(DC) Voltage	DC1000V/1500V(IEC)				
Maximum Series Fuse Rating	30A				
Nominal Module Operating Temperature	43±2°C				
Temperature Coefficients of Pmax	- 0.34%/°C				
Temperature Coefficients of Voc	- 0.25%/°C				
Temperature Coefficients of Isc	+ 0.04%/°C				

MECHANICAL CHARACTERISTICS

Solar Cell	210x105mm 12 Mono crystalline 210x105mm 12BB
Number of cells	120(6x20)
Dimensions	2172x1303x35mm (85.51x51.30x1.38 inches)
Weight	30.9Kg (68.12 lbs)
Front Glass	3.2mm (0.13 inches) front glass
Frame	Anodized aluminum alloy
Junction Box	IP68 rated
Cable	4mm² solar cable 300mm (11.81 inches) Customized Length
Connector	MC4 PV-XT101.1/Z4S-abcde

PACKING

	40HC
Pieces per pallet	31
pallets per container	17
Pieces per container	527

STC: irradiance 1000 W/m², module temperature 25°C, AM=1.5; Tolerance of Pmax is within +/- 3%.