

# ALL BLACK POLY CRYSTALLINE MODULE 280-320 Watt



## KEY FEATURES



Our solar cells offer high conversion efficiency to ensure the highest quality

Our high performing modules have an industry low tolerance of 0+5%

The modules can withstand high wind-pressure, snow loads and extreme temperatures

Passed IEC 5400 Pa mechanical loading test

## QUALITY & SAFETY

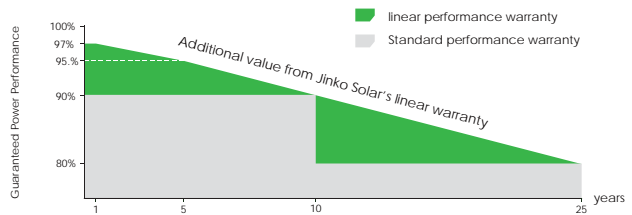
Industry leading power output warranty  
(10 years/90%, 25 years/80%)

10-year warranty on product materials and processing technology

ISO 9001:2008 (Quality Management System) certified factory

IEC61215、IEC61730 certified products

## Premium Performance Warranty



\* Based on customer requirements and contract terms

ISO9001:2008、ISO14001:2004、OHSAS18001 certified factory

IEC61215、IEC61730 certified products



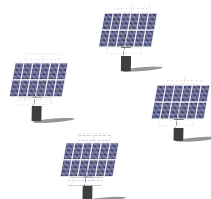
## APPLICATIONS



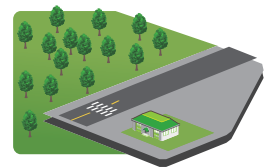
On-grid residential roof-tops



On-grid commercial/  
industrial roof-tops

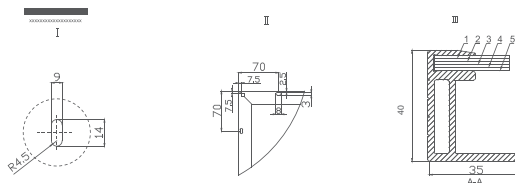
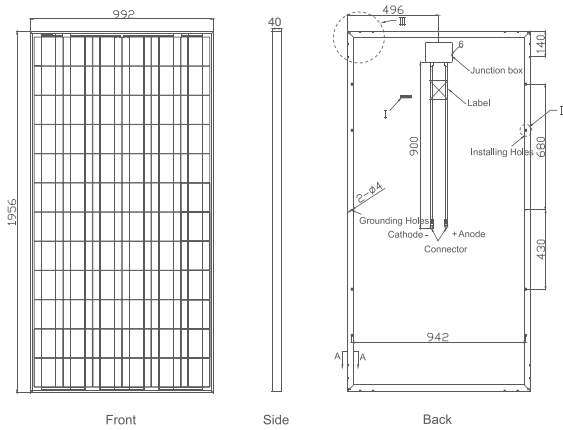


Solar power plants



Off-grid systems

## Engineering Drawings



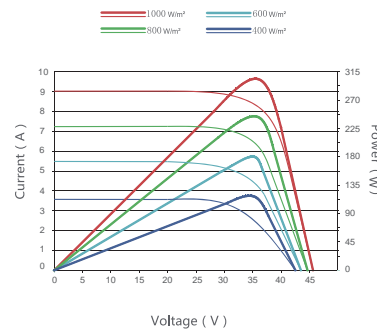
## Packaging Configuration

( Two boxes =One pallet )

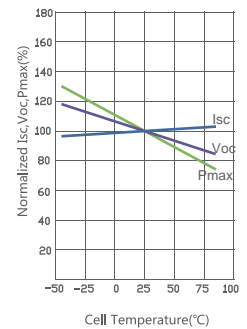
26pcs/box, 52pcs/pallet, 624pcs/40'HQ Container

## Electrical Performance & Temperature Dependence

Current-Voltage & Power-Voltage Curves (305W)



Temperature Dependence of Isc, Voc, Pmax



## Mechanical Characteristics

Cell Type	Poly-crystalline 156×156mm (6 inch)
No. of cells	72 (6×12)
Dimensions	1956×992×40mm (77.01×39.05×1.57 inch)
Weight	26.5 kg (58.4 lbs.)
Front Glass	3.2mm, High Transmission, Low Iron, Tempered Glass
Frame	Anodized Aluminium Alloy
Junction Box	IP65 Rated
Output Cables	TÜV 1×4.0mm² / UL 12AWG , Length:900mm

## SPECIFICATIONS

Module Type	280W-72P	290W-72P	300W-72P	310W-72P	320W-72P
Maximum Power at STC(Pmax)	280Wp	290Wp	300Wp	310Wp	320Wp
Maximum Power Voltage (Vmp)	36.0V	36.1V	36.6V	37.0V	37.4V
Maximum Power Current (Imp)	7.78A	8.01A	8.20A	8.38A	8.56A
Open-circuit Voltage (Voc)	44.6V	44.9V	45.3V	45.9V	46.4V
Short-circuit Current (Isc)	8.40A	8.65A	8.84A	8.96A	9.05A
Module Efficiency(%)	14.43%	14.95%	15.46%	15.98%	16.49%
Operating Temperature(°C)	-40°C~+85°C				
Maximum system voltage	1500V VDC				
Maximum series fuse rating	15A				
Power tolerance	0~+5%(optional)				
Temperature coefficients of Pmax	-0.45%/°C				
Temperature coefficients of Voc	-0.27%/°C				
Temperature coefficients of Isc	0.05%/°C				
Nominal operating cell temperature (NOCT)	45±2°C				

STC: Irradiance 1000W/m²



Module Temperature 25°C



AM=1.5

\* Power measurement tolerance: 0~+5%