

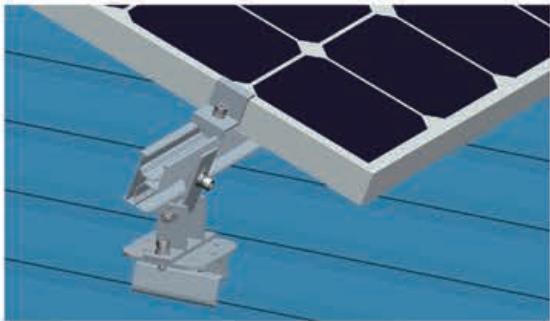
# Adjustable Tilt Mounting System



### Technical Data

Application:	Flat roof or low pitched roof
Tilt Angle	10~15°, 15~30° and 30~60°
Material:	Aluminum 6005-T5 & SUS 304 Stainless Steel
Standard:	AS/NZS 1170
Max Wind Speed:	Up to 60 m/s
Snow Load:	Up to 1.4 kn/m <sup>2</sup>
Warranty:	10 years warranty, 20 years service life
Applicable Module:	Framed or Frameless
Module Orientation:	Portrait or Landscape

### Installation Details



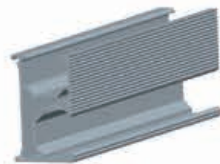
### Components:



Front Leg



Rear Leg



Rail



Aluminum Nut & Bolt



End Clamp



Middle Clamp



Rail Splice

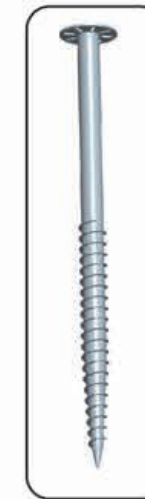


Clamp

# Ground screw



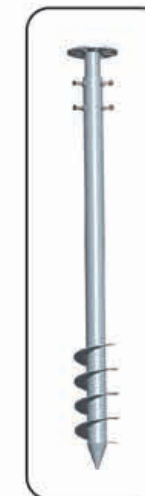
Material: Hot Dip Galvanizing Q235B  
Outer Diameter: 76mm  
Thickness: 3-3.5mm  
Length: 1000-3000mm  
Flange Diameter: 200mm & 220mm



Material: Hot Dip Galvanizing Q235B  
Outer Diameter: 76mm  
Thickness: 3-3.5mm  
Length: 1000-3000mm  
Flange Diameter: 200mm & 220mm



Material: Hot Dip Galvanizing Q235B  
Outer Diameter: 76mm  
Thickness: 3-3.5mm  
Length: 1000-3000mm  
Flange Diameter: 200mm & 220mm  
Nut Diameter: M12\*35



Material: Hot Dip Galvanizing Q235B  
Outer Diameter: 76mm  
Thickness: 3-3.5mm  
Length: 1000-3000mm  
Flange Diameter: 200mm & 220mm  
Nut Diameter: M12\*35