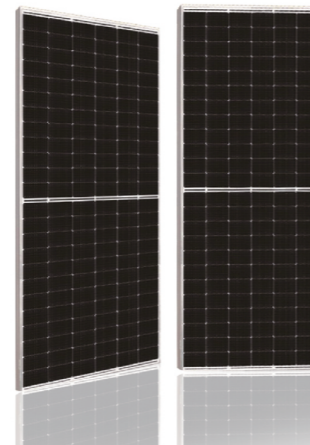
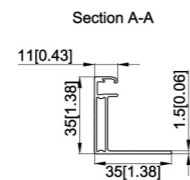
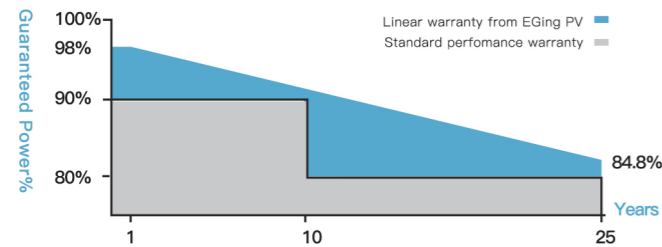


PRODUCT INTRO

# AfMc Series

## MONO CRYSTALLINE SOLAR MODULE


530W~550W



### QUALITY GUARANTEED


- ① Linear output power guaranteed
- ② 10 years product warranty
- ③ 25 years linear power output






**High Efficiency**

Advanced solar cell technology ensures the high module efficiency up to 21.3%.




**Positive Power Selection**

Module will generate power selection of 0 to +5W.




**Strong Load Capacity**

Module is capable to withstand 2400Pa wind loads and 5400Pa Snow loads.



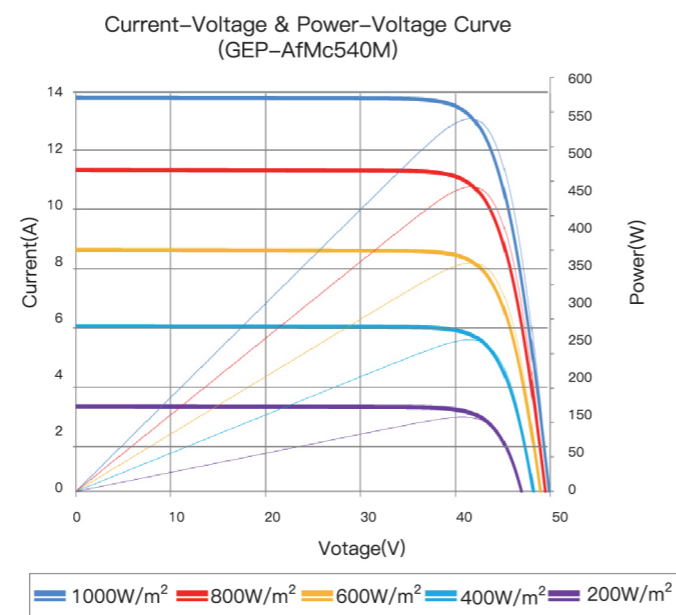
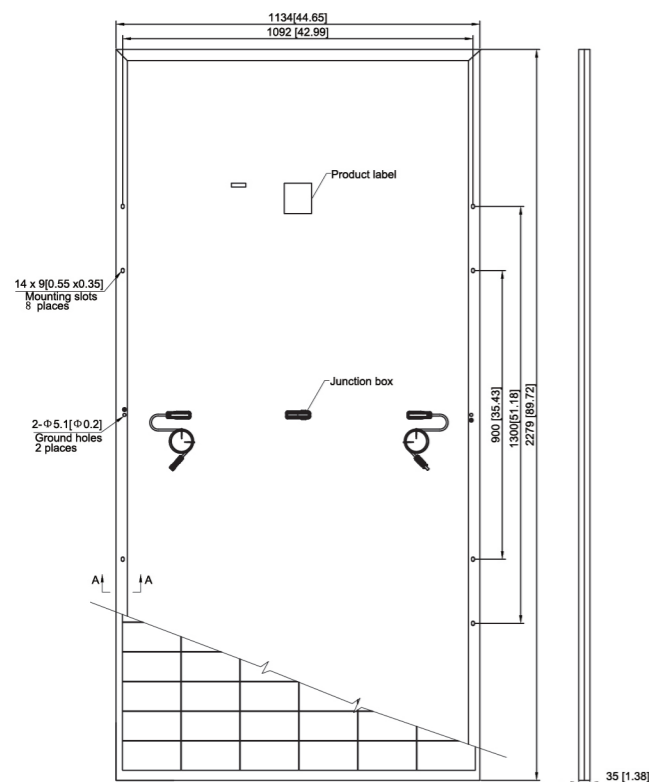
**Reliable quality**

Module is manufactured in accordance with international quality standards ISO9001



**Higher Weatherproof Rating**

J-Box performs module with an environmental protection rating to IP68.



### MODULE CHARACTERISTICS

Models	GEP-AfMc530M	GEP-AfMc535M	GEP-AfMc540M	GEP-AfMc545M	GEP-AfMc550M
	GEP-AfMc530MH	GEP-AfMc535MH	GEP-AfMc540MH	GEP-AfMc545MH	GEP-AfMc550MH
Maximum Power (Pmax)	530W	535W	540W	545W	550W
Positive Power Selection	0/+5W	0/+5W	0/+5W	0/+5W	0/+5W
Maximum Power Voltage (Vmp)	41.35V	41.5V	41.65V	41.8V	41.95V
Maximum Power Current(Imp)	12.82A	12.9A	12.97A	13.04A	13.11A
Open Circuit Voltage (Voc)	49.2V	49.35V	49.5V	49.65V	49.8V
Short Circuit Current (Isc)	13.71A	13.78A	13.85A	13.92A	13.99A
Module Efficiency	20.5%	20.7%	20.9%	21.1%	21.3%
Operating module Temperature	- 40°C ~ +85°C				
Maximum system(DC) Voltage	DC1000V/1500V(IEC)				
Maximum Series Fuse Rating	25A				
Nominal Module Operating Temperature	42±2°C				
Temperature Coefficients of Pmax	- 0.36%/°C				
Temperature Coefficients of Voc	- 0.304%/°C				
Temperature Coefficients of Isc	+ 0.050%/°C				

### MECHANICAL CHARACTERISTICS

Solar Cell	182x91mm 10 Mono crystalline 182x91mm 10BB
Number of cells	144( 6x24 )
Dimensions	2279x1134x35mm ( 89.72x44.65x1.38 inches )
Weight	27.2Kg (59.97 lbs)
Front Glass	3.2mm (0.13 inches) front glass
Frame	Anodized aluminum alloy
Junction Box	IP68 rated
Cable	4mm <sup>2</sup> solar cable 300mm (11.81 inches) Customized Length
Connector	MC4 PV-XT101.1/Z4S-abcde

### PACKING

	20GP	40HC
Pieces per pallet	31	31
pallets per container	5	20
Pieces per container	155	620

STC: irradiance 1000 W/m<sup>2</sup>, module temperature 25°C, AM=1.5; Tolerance of Pmax is within +/- 3%.