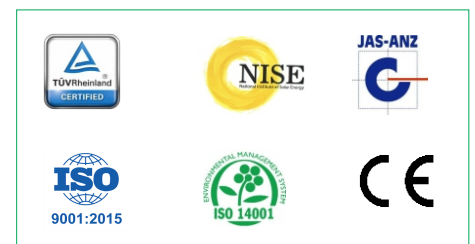
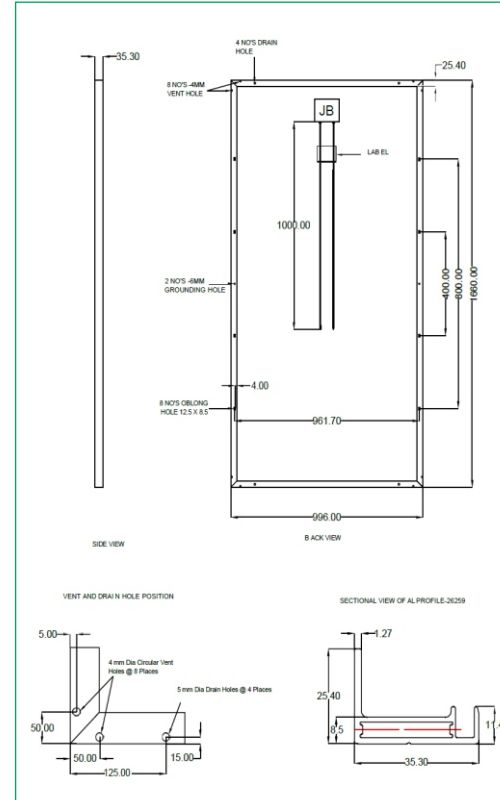


# MEGATHRON SERIES

## 4BB SERIES

Model Type	EFS24250MC72
<b>Electrical Data: at Standard test condition (STC)*</b>	
Maximum power ( $P_{max}$ )	250 W
Open circuit voltage ( $V_{oc}$ )	44.64 V
Short circuit current ( $I_{sc}$ )	7.27 A
Voltage at $P_{max}$ ( $V_{mp}$ )	36 V
Current at $P_{max}$ ( $I_{mp}$ )	6.95 A
Tolerance at $P_{max}$	±3% WP
<b>Thermal Data:</b>	
Temperature coefficient of $V_{oc}$	-0.36 %/K
Temperature coefficient of $I_{sc}$	0.06 %/K
Temperature coefficient of $P_{max}$	-0.43 %/K
Normal operating cell temperature	47±2 °C
<b>Mechanical Data:</b>	
Cell type	Multi Crystalline
Solar cell per module	72
Module dimensions L x W x T, mm	1660 x 996 x 35
Mounting hole pitch (Y)	800 & 400mm
Mounting hole pitch (X)	962mm
Mounting hole size (A)	12 x 8.5mm oblong holes at 4 places
Grounding Hole Size (B)	7mm dia circular @ 2 places
Module weight, Kg	18.75
Module area, m <sup>2</sup>	1.653
Junction box	IP67 With 3 diode
Cables & Plug	MC4
Front cover	3.2 Toughened textured low iron glass
Embedding	EVA (ethylene vinyl acetate)
<b>Permissible operating conditions:</b>	
Operating temperature range	-40 °C TO 85 °C
Maximum system voltage	1000 VDC
Application class	A
<b>Warranty and Certifications</b>	
Product Warranty	10 years on materials & workmanship
Performance Warranty	25 years linears power out put



### Notes:

\* STC: 1000 W/m<sup>2</sup> irradiance, 25°C cell temperature, AM 1.5g spectrum according to EN 60904-3 herein at any time without prior notice.  
 Warranty - Please refer to "Enfros Solar Warranty" document for Terms & Conditions  
 Certifications - IEC 61215 Ed. 2, IEC 61730, IEC 61701, CE