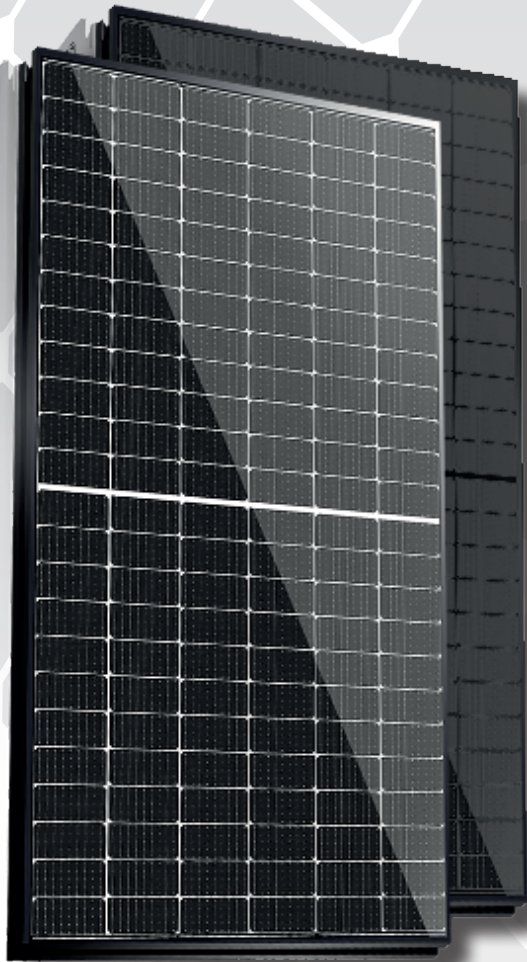




X-HALF CUT- HJT Heterojunction High Efficiency glass glass BIFACIAL modules Monocrystalline 460 - 465 - 470 - 475 - 480Wp



HJT 144 Half-cut cells Multi Busbar



High Energy Yield



High Voltage 1500 Vdc



Double glass module with frame



Power tolerance



Product Warranty



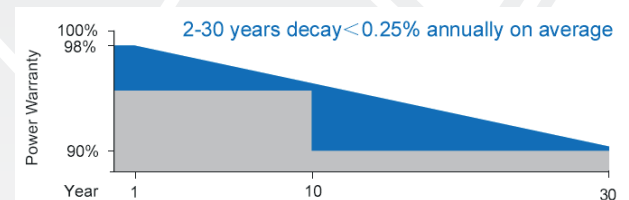
Linear Warranty



Max efficiency 22,08%

X-HALF CUT is one of a wide range of SUNERG's product. It is manufactured according to IEC 61215, IEC 61730 and CE standards. The innovative multi busbar half-cells guarantee high power per unit, reduce the risk of micro-crack, mismatch and shadow loss, so increasing the reliability of the module.

LINEAR WARRANTY



- look warranty terms -

CORRESPOND TO

IEC 61215 | IEC 61730 | PV CYCLE | CE |

UNI EN ISO 9001:2008
UNI EN ISO 14001:2004
UNI EN ISO 45001:2018

| Quality management system
| Standards for environmental management system
| International standards for occupational health and safety

ELECTRICAL DATA (STC)		XMHCJI460BFDG+H	XMHCJI465BFDG+H	XMHCJI470BFDG+H	XMHCJI475BFDG+H	XMHCJI480BFDG+H
Open circuit Voltage	(Voc)	53.35 V	53.65 V	53.95 V	54.25 V	54.55 V
Voltage a Pmax.	(Vmp)	45.30 V	45.50 V	45.70 V	45.90 V	46.10 V
Short-circuit current	(Isc)	10.94 A	10.98 A	11.02 A	11.06 A	11.10 A
Current at Pmax.	(Imp)	10.15 A	10.22 A	10.28 A	10.35 A	10.41 A
Peak Power (Pmax) Tolerance 0/+5%		460 Wp	465 Wp	470 Wp	475 Wp	480 Wp
Module Efficiency		21.16 %	21.39 %	21.62 %	21.85 %	22.08 %
Maximum voltage		1500 V DC	1500 V DC	1500 V DC	1500 V DC	1500 V DC
Maximum series fuse rating		25A	25A	25A	25A	25A
Operating Temperature		-40°C - +85°C	-40°C - +85°C	-40°C - +85°C	-40°C - +85°C	-40°C - +85°C

Tolerance electric measurement ±3%

*** STC** (Standard test conditions)

Irradiance 1000 w/m², Temperature 25°C, AM = 1.5

TEMPERATURE COEFFICIENT

Pmax Temperature Coefficient -0.24% / °C

Voc Temperature Coefficient -0.22% / °C

Isc Temperature Coefficient 0.047% / °C

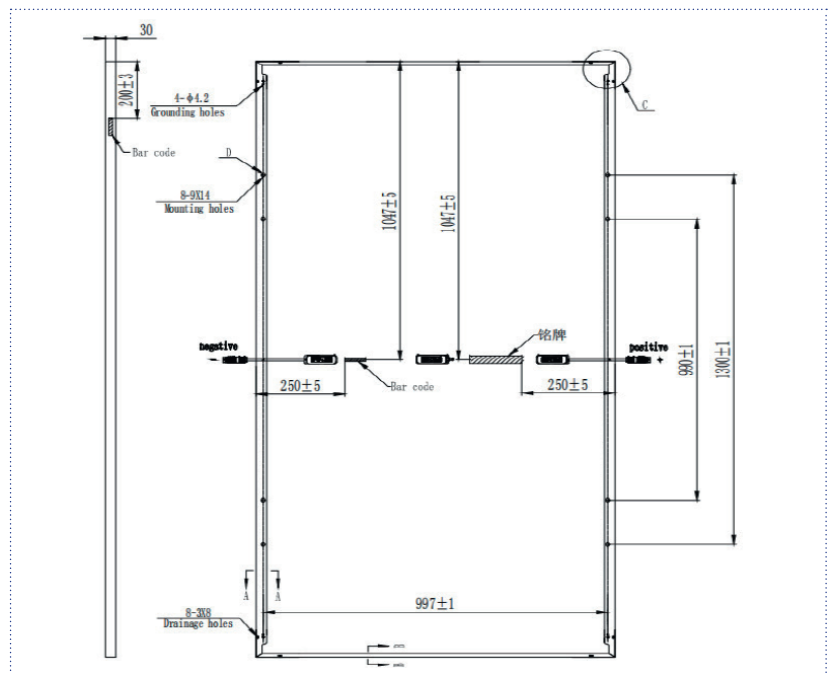
MECHANICAL CHARACTERISTIC

Dimensions (mm) 2094 x 1038 x 30

Weight (Kg) 27.5

Solar cells type HJT Mono 166x83 mm

No. solar cells 144



PACKING CONFIGURATION

Module per Pallet 35 pcs.

Modules per container 40'HQ 814, 35+4 pcs.

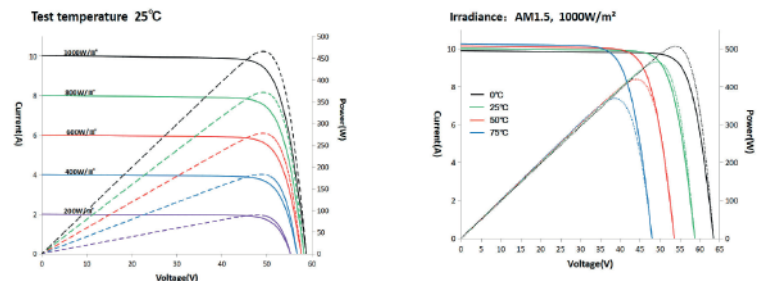
GENERAL INFORMATION

Glass high transmission, tempered glass

Frame Anodized aluminum alloy

Junction Box IP68 3 bypass diodes

Output Cable - Connectors 4.0mm², 300 mm



Sunerg Solar S.r.l. reserves the right to make changes to the technical data of the product without prior notice.

The technical details of the form, although included with the utmost care, may contain errors or inaccuracies not attributable to Sunerg Solar S.r.l.