

RESS

ePower WM Series

e48V Series Li-ion Battery Pack



PRODUCT FEATURES

- ◆ Adopting high-security aluminum-cased LFP cells
- ◆ Max. charge and discharge current up to 100A
- ◆ Parallel operation up to 8 battery packs
- ◆ Support for RS485 and CAN for easy network access
- ◆ BMS compatible with mainstream inverters



PRODUCT INTRODUCTION

The ACE residential energy storage system (RESS) ePower series battery packs can work with a solar energy storage systems and optimize system performance, absorb excessive PV electricity and supply power for residence whenever needed. This product can be wall mounted or floor mounted and allows for parallel connection.

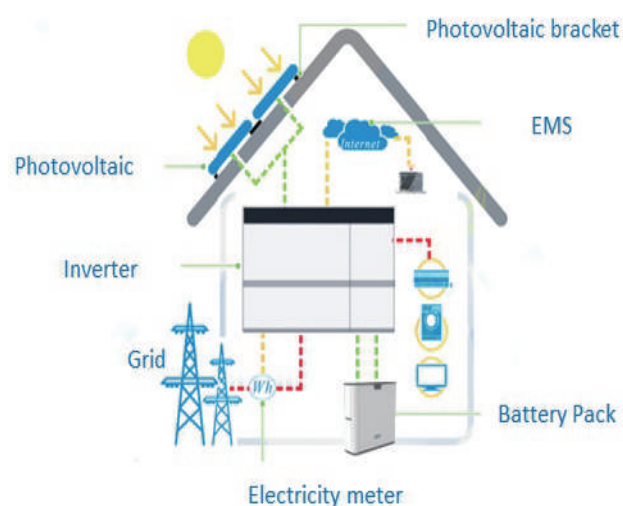


APPLICATION SCENARIOS

- ◆ Residential application
- ◆ Small commercial or industrial areas
- ◆ Telecom base stations
- ◆ Micro off-grid systems



SYSTEM TOPOLOGY



Shenzhen ACE Battery Co., LTD.

Add: Block B, BAK Industrial Park, Kuipeng Rd., Dapeng, Shenzhen, China
Tel: +86-755-8887 8567
Web: www.acebattery.com



48V Li-ion Battery Pack

■ Specifications

Item	ACERESS48V100-W
Cell Material	LFP
Rated Voltage [V]	48
Rated Capacity [Ah]	100
Rated Energy [KWh]	4.8
Voltage Range [V]	42~54
Max. Charge Current [A]	100
Max. DOD	90%
Usable Energy [KWh]	4.32
Max. Discharge Current [A]	100
Weight [Kg]	53
Dimensions [L*H*W, mm]	550*180*608
Number of Packs (In Parallel)	Up to 8 units
IP Grade	IP54
Cooling Method	Natural cooling
Installation Method	Wall mounted/Floor landing
Operating Temperature	Charge: 0°C to +55°C Discharge: -20°C to +55°C
Certification	IEC62619/UL1973/UN38.3/CE
Relative Humidity	5~95%RH (non-condensing)
Communication Port	RS485/CAN

The datasheet is subject to change without prior notification.