

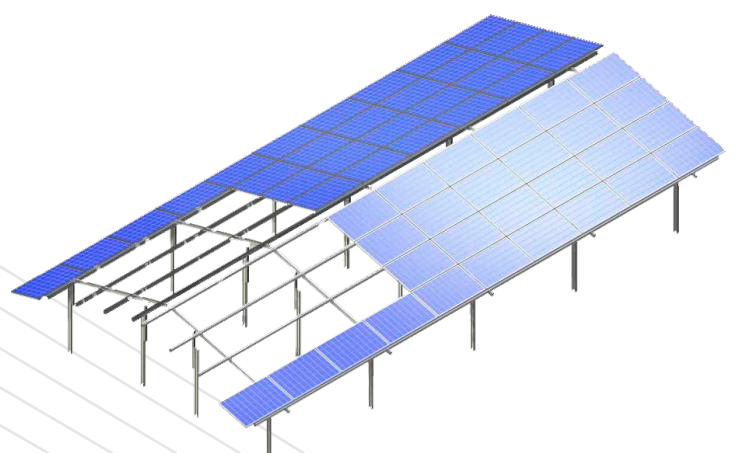
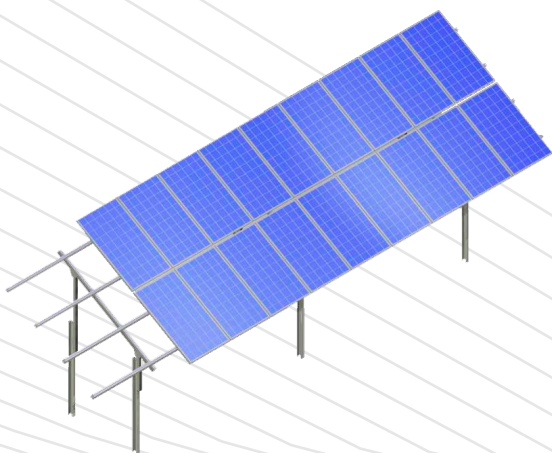


Aluminium open land system **Alu-EASY** >>

The Alu-EASY open land system delivers a stable system that is quick to install and is made from resistant and light aluminium material. The system has been successfully installed in several solar parks.

Plus points:

- >> **Short assembly times** due to the high degree of prefabrication
- >> **Best suited in the case** of difficult underground conditions (different types of foundations, height adjustability)
- >> **Many possible variations**
- >> **Suited to all panel types** (framed and unframed)
- >> **10 year warranty** through resistant materials



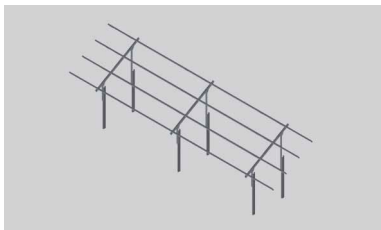


Description / technical data:

Specifications

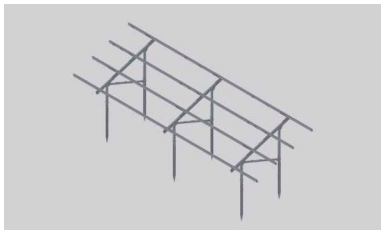
- » Structural components made from aluminium EN AW 6060 T66
- » Connection parts made from A2 stainless steel
- » C125 galvanised steel profiles as pile-driven posts
- » Concrete foundations made from reinforced concrete
- » Variable inclination of 0 - 45°
- » 2 - 3 panels upper edge / 2 - 5 transverse panels
- » East - West elevation

Types of foundations



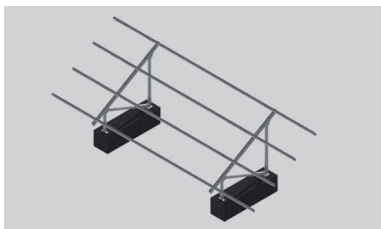
Pile-driven

- » Long pile-driven profiles depending on soil conditions
- » Optimal alignment in all directions to precisely 1 cm
- » Foundation by own pile-driving machine



Bolted

- » High traction and pressure values
- » Installation by mini-digger with rotating head support



Concreted

- » Best suited where ground excavation is not permitted
- » The size is adjusted based on the static requirements at the location

Geological surveys Static

- » Location-based geological surveys
- » Individual system statics on the basis of location-based loads (wind and snow)
- » Statics calculation in accordance with Theory II. Order
- » Load assumptions in accordance with DIN 1055 / Euro code 1, DIN 4113, DIN 18800, Euro code 9 or client specific standards
- » FEM calculations for certification of the construction