

PIKCELL GROUP

BIFACIAL PERC MONO MODULE

PIK 400M(72)

Best in class quality PiKCELL Group production line is fully automated and include multiple quality checks throughout the production process including Cell Testing, 100% Visual Mirror Inspection, EL Testing and PV Sun Simulator Testing



High conversion efficiency
High module efficiency to guarantee power output.



Excellent loading capability
2400Pa wind loads, 5400Pa snow loads.

0 to +5W

0 to +5W positive tolerance
Detailed information in Electrical Specifications



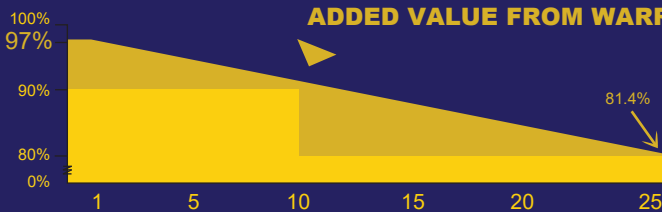
Self-cleaning glass
Coating glass for self-cleaning, reduce surface dust.



Outstanding low irradiation performance
Excellent module efficiency even in the weak light conditions, such as morning or cloudy.

48

48-hour responsive service



Standard tiered warranty
Linear performance warranty

10

10-year warranty on materials and workmanship

25

25-year performance warranty

Bldv.Partizanski Odredi 40-1/5
1000 Skopje

Tel: +389(2) 3109 077

Fax: +389(2) 3256 588

www.pikcellgroup.mk

E-mail: contact@pikcellgroup.mk



ProCredit Bank AD Skopje
Account No. 380176950607221
IBAN: MK07

SWIFT: PRBUMK22XXX
Komerijalna Banka AD Skopje
Account No. 0270100238818
IBAN: MK07300701002388107
SWIFT: KOBSMK2X



EN ISO 9001 : 2015
No 4410021320170
EN ISO 14001 : 2015
No 4410421320170
EN ISO 45001 : 2018
No 4412621320170

ELECTRICAL DATA

Model Type	PiK400M
Peak Power (Pmax)/W	400
Module Efficiency/%	20.16
Maximum Power Voltage (Vmp)/V	40.5
Maximum Power Current (Imp)/A	9.88
Open Circuit Voltage (Voc)/V	49.2
Short Circuit Voltage (Isc)/A	10.23
Power Tolerance	0 to +5W
Maximum System Voltage	1500V
Nominal Operating Cell Temperature	44.4±2°C
Maximum Series Fuse Rating	15A

MECHANICAL DATA

Cell Type	Monocrystalline
Number of Cells	72 cells (12x6)
Weight	22kg
Dimensions	1980x1002x35mm
Max Load	5400 Pascals
Junction Box	IP67 rated
Connector	MC4
Wire Type	PV Wire

TEMPERATURE CHARACTERISTICS

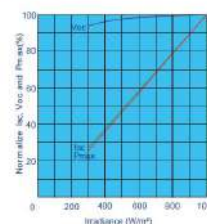
Temp. Coeff. of Isc (TK Isc)	0.045% /°C
Temp. Coeff. of Voc (TK Voc)	-0.27% /°C
Temp. Coeff. of Pmax (TK Pmax)	-0.408% /°C

PACKING MANNER

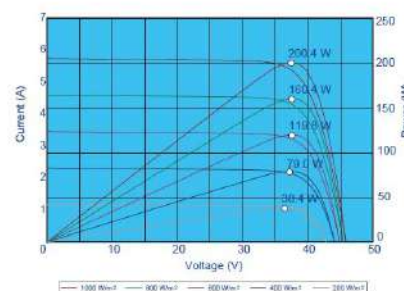
Container	40' HQ
Pieces per Pallet	31
Pieces per Container	816

ELECTRICAL CHARACTERISTICS

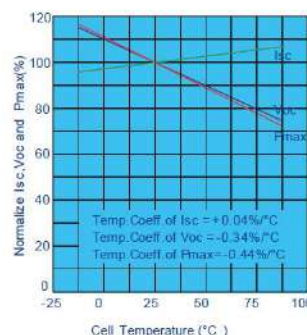
Irradiance Dependence of Isc, Voc and Pmax
(Cell Temperature: 25°C)



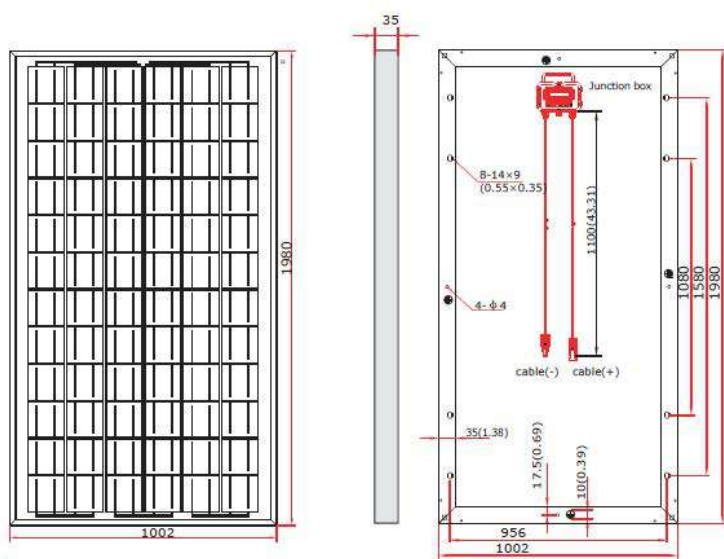
Current-Voltage & Power-Voltage Curve
(AM1.5, Cell Temperature 25°C)



Temperature Dependence of Isc, Voc and Pmax



PHYSICAL CHARACTERISTICS



Note: the specifications are obtained under the Standard Test Conditions (STCs): 1000W/m² solar irradiance, 1.5 Air Mass, and cell temperature of 25°C. The NOCT is obtained under the Test Conditions: 800W/m², 20°C ambient temperature, 1m/s wind speed, AM 1.5 spectrum. Please contact contact@pikcellgroup.mk for technical support. The actual transactions will be subject to the contracts. These parameters are for reference only and it is not a part of the contracts. The specifications are subject to change without prior notice.