



# M2 SERIES

## AP60H 270~290W



### M2 SERIES

LDK redefined the high-efficiency module series by integrating 157mm silicon wafers with multi-busbar and half-cut cell technologies. LDK module combined creative technology effectively and extremely improved the module efficiency and power output.

### KEY FEATURES

- 1500V** Higher system voltages can effectively reduce BOS
- Lower operating temperature and temperature coefficient, obtain higher profit
- Significantly reduce the effect of hot spot temperature and shadow shielding
- Better design for better mechanical load performance
- Ease of use in more demanding environments

### MANAGEMENT SYSTEM

- ISO9001:2015
- ISO14001:2015
- OHSAS18001:2007

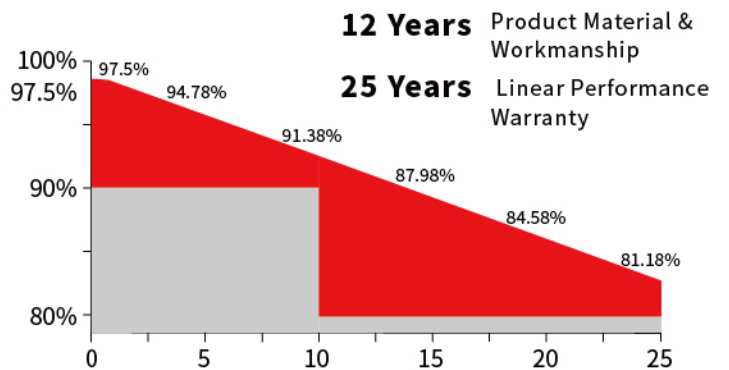
### PRODUCT CERTIFICATION



LDK is a leading manufacturer and service provider of professional pv cells and modules that can be widely utilized in residence, commerce and ground pv plant.

LDK provides PV products with exceptional power output and reliability by integrating rigorous design, advanced production technology and fully automatic production equipment. Strict quality control and test standards confirm its pursuit of high quality output.

### WARRANTY



XinYu LDK Power Supply Technology Co.,Ltd

ADD: No. 1950 SaiWei Avenue, High-Tech, Industrial Development Zone, XinYu City, JiangXi Province, P.R. CHINA

## ELECTRICAL PARAMETERS@STC AP60H-270~290

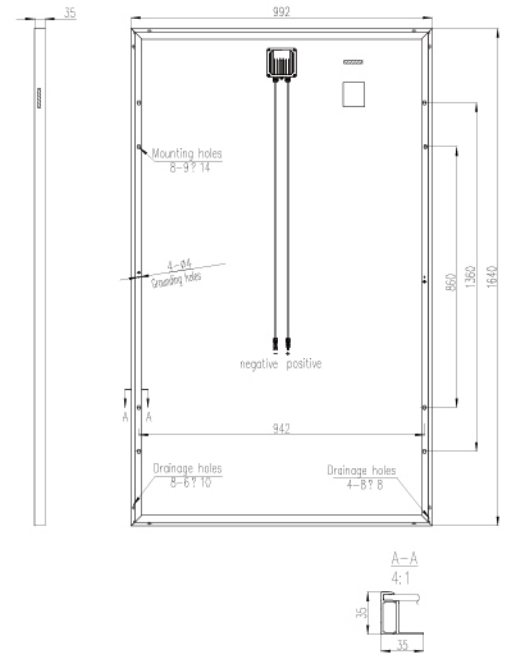
Max. Power Output Pmax (W)	270	275	280	285	290
Power Tolerance	0~3%	0~+3%	0~+3%	0~+3%	0~+3%
Max. Power Voltage Vmp (V)	31.58	31.87	32.15	32.43	32.70
Max. Power Current Imp (A)	8.55	8.63	8.71	8.79	8.87
Open Circuit Voltage Voc (V)	37.87	38.14	38.42	38.69	38.98
Short Circuit Current Isc (A)	9.13	9.20	9.27	9.35	9.42
Module Efficiency (%)	16.42	16.72	17.02	17.33	17.63

STC (Standard Test Condition): Irradiance 1000W/m<sup>2</sup>, Cell Temperature 25OC, Air Mass 1.5

## ELECTRICAL PARAMETERS@NMOT

Max. Power Output Pmax (W)	203	206	209	213	216
Max. Power Voltage Vmp (V)	29.29	29.58	29.87	30.14	30.42
Max. Power Current Imp (A)	6.92	6.95	7.00	7.06	7.11
Open Circuit Voltage Voc (V)	35.54	35.76	36.01	36.26	36.53
Short Circuit Current Isc (A)	7.37	7.42	7.48	7.54	7.60

Nominal Module Operating Temperature (NMOT), Irradiance of 800W/m<sup>2</sup>, Spectrum AM 1.5, Ambient Temperature 20°C, Wind Speed 1m/s



## TEMPERATURE COEFFICIENTS

Temperature Coefficients of Pmp	-0.37%/°C
Temperature Coefficients of Voc	-0.31%/°C
Temperature Coefficients of Isc	+0.049%/°C

## MECHANICAL PARAMETERS

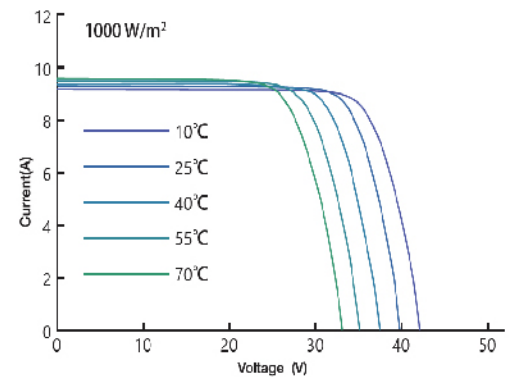
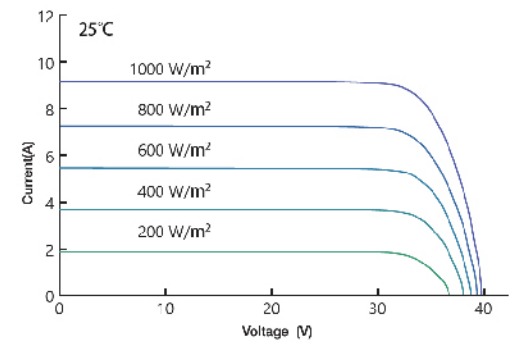
Cell Type	Poly 157×157mm
Number of Cells	60pcs (6×10)
Dimensions (L*W*H)	1640×992×35mm
Weight	18.2kg
Frame	Anodized Aluminum
Junction Box	IP67, 3 bypass diodes
Cable, Length	4mm <sup>2</sup> , 1000mm

## OPERATING CONDITION

Maximum System Voltage(V)	1500 (DC)
Operating Temperature(°C)	-40~+85
Max. Wind Load / Snow Load(pa)	2400/5400
Max. Over Current(A)	20
Application Class	ClassA
Fire Rating	ClassC
NMOT(°C)	42±3

## PACKAGE INFORMATION

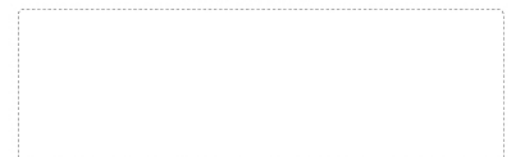
Per Pallet	30/ 30+5pcs
40' HQ	910 (65×14) pcs



\*Power measurement tolerance: ±3%

\*No notice when product specifications change

Dealer information



**XinYu LDK Power Supply Technology Co.,Ltd**

ADD: No. 1950 SaiWei Avenue, High-Tech, Industrial Development Zone, XinYu City, JiangXi Province, P.R. CHINA  
Email: modulesales@ldksolar.com