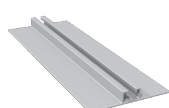
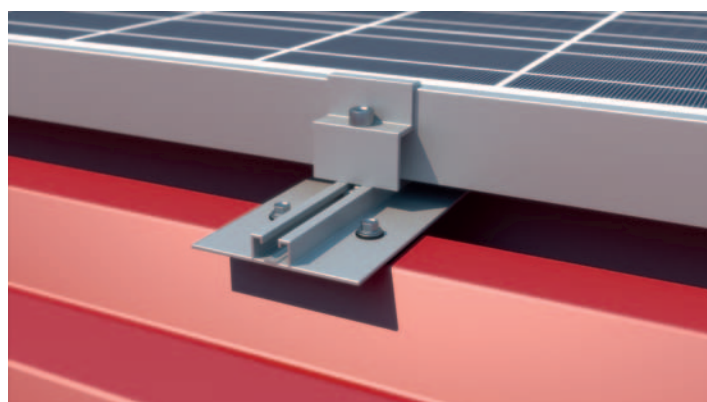
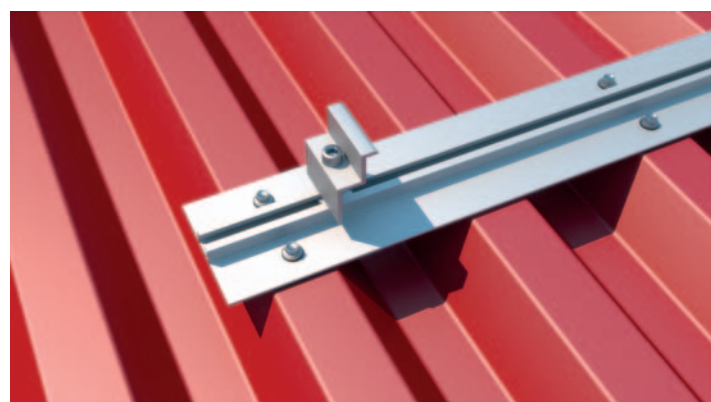
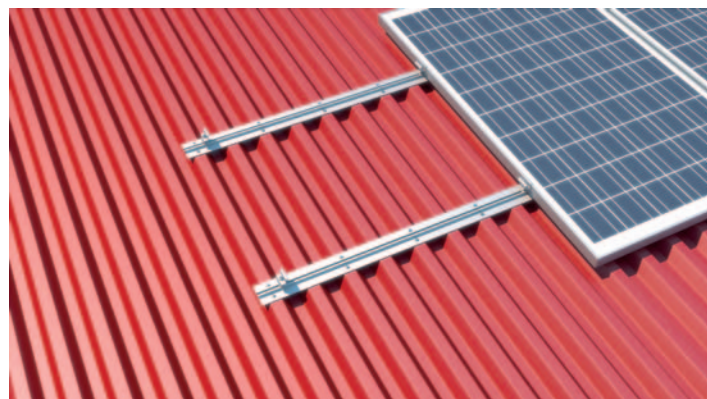
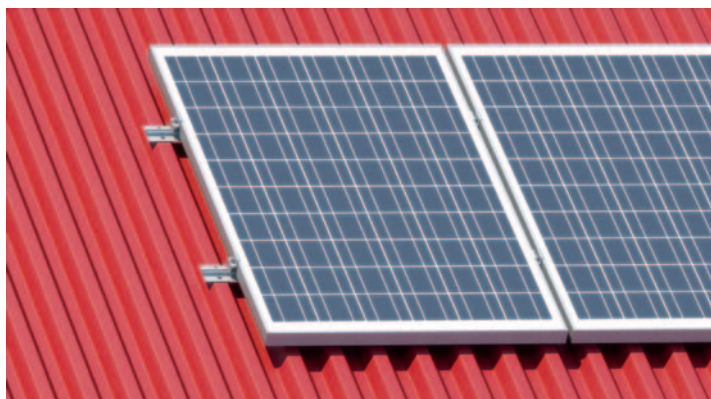


SYSTEM REM-12 VERTICAL V.1

TRAPEZOIDAL ROOF I



Art. 0112

Mounting Rail
Measurements: 31x50
Length: 6000mm, 1000mm
Joining screws
top: M8
side: M8/M10/M12
Material: AL 6060T6

Art. 0132

Hexagon socket cap screws DIN 912 with serration
M8 12÷60
Material: A2 1.4301 stainless steel

Art. 080

T-slot nuts, self aligning with spring ball
M8
Used with hexagon socket cap screw Art. 0132
Use: for Mounting Rails Art. 0109, Art. 0110, Art. 062, Art. 0111, Art. 0112
Material: AL 6060T6

Art. 0147

Click
M8
Material: Aluminium
for rails: Art. 0109, Art. 0111

Art. 073

Middle Clamp
Length 50mm (standard)
Length 60mm – 100mm
Height 30mm
Thickness 3mm
Colors: plain aluminium/black
Material: AL 6060T6

Art. 075

End clamp
Length: 50 (standard)
Length: 70mm
Height: from 30mm to 50mm
Thickness 3mm
Colors: plain aluminium/black
Material: AL 6060T6

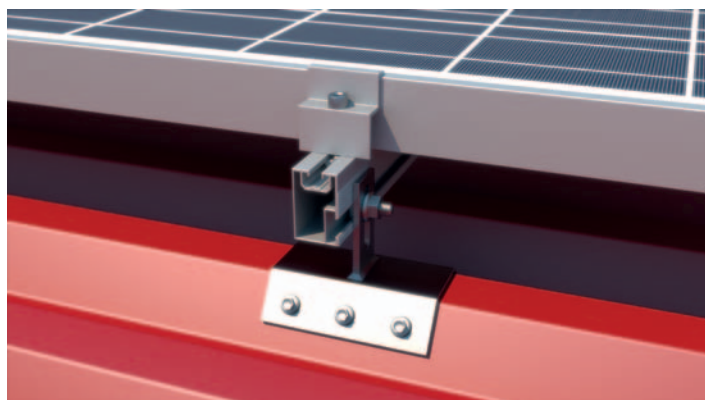
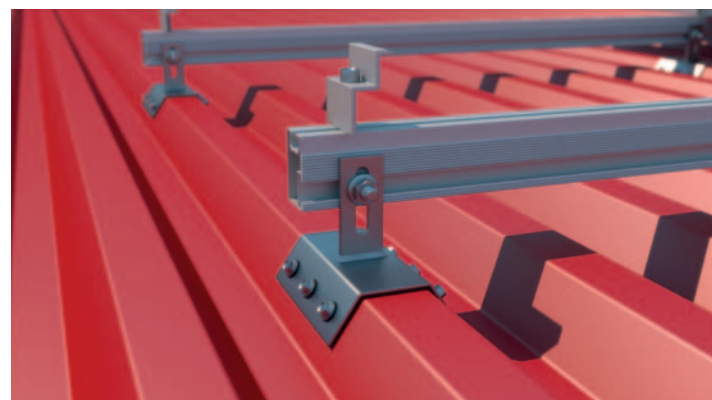
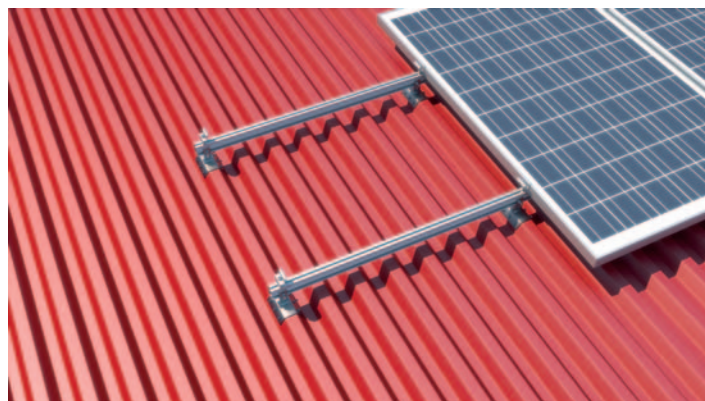
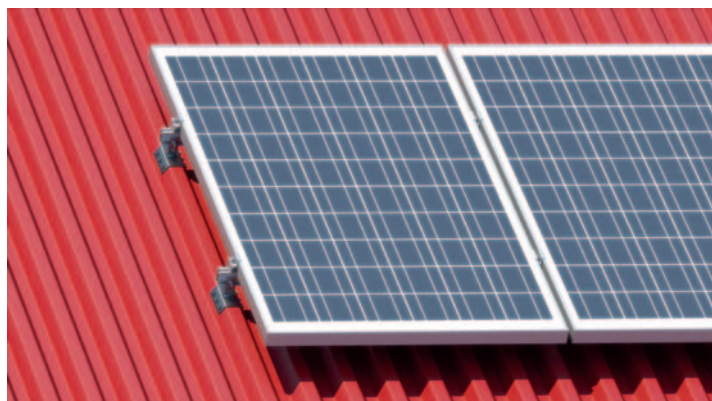


Art. 0128

Screws DIN 7504 with hexagon head and flange
M4,8 13÷100
M6,6 19÷150
M8,3 13 ÷150
Material: A2 1.4301 stainless steel

SYSTEM REM-12 VERTICAL V.2

TRAPEZOIDAL ROOF II



Art. 0109

Mounting Rail
 Measurements: 31x50
 Length: 6200mm, 3100mm, 2070mm
 Joining screws
 top: M8
 side: M8/M10/M12
 Material: AL 6060T6



Art. 060

Trapezoidal roof hook with serration
 Length: 120
 Needed Measurements Trapezoidal Sheet
 Thickness 2mm, (5x)Hole: Ø7mm
 Bar: 30x4, long Hole: 11x30 with Rubber EPDM
 Use: Trapezoidal Roof
 Material: A2 1.4301 stainless steel



Art. 0129

Hammerhead screws 28/15
 Measurements:
 M8 16 ÷ 70
 M10 16 ÷ 100
 Use: Mounting Rail Art. 0110
 Material: A2 1.4301 stainless steel



Art. 0134

Hexagon flange nuts with serration
 DIN 6923
 M6
 M8
 M10
 M12
 Material: 1.4301 A2



Art. 0132

Hexagon socket cap screws DIN 912
 with serration
 M8 12 ÷ 60
 Material: A2 1.4301 stainless steel



Art. 080

T-slot nuts, self aligning with spring ball
 M8
 Used with hexagon socket cap screw Art. 0132
 Use: for Mounting Rails Art. 0109, Art. 0110, Art. 062, Art. 0111, Art. 0112
 Material: AL 6060T6



Art. 0147

Click
 M8
 Material: Aluminium
 for rails: Art. 0109, Art. 0111



Art. 073

Middle Clamp
 Length 50mm (standard)
 Length 60mm – 100mm
 Height 30mm
 Thickness 3mm
 Colors: plain aluminium/black
 Material: AL 6060T6



Art. 075

End clamp
 Length: 50 (standard)
 Length: 70mm
 Height: from 30mm to 50mm
 Thickness 3mm
 Colors: plain aluminium/black
 Material: AL 6060T6

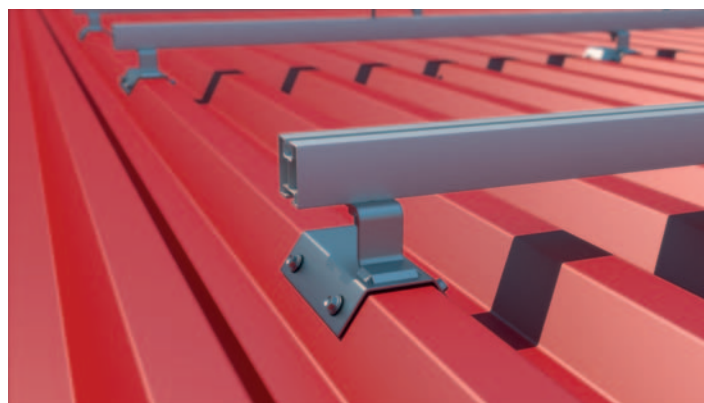
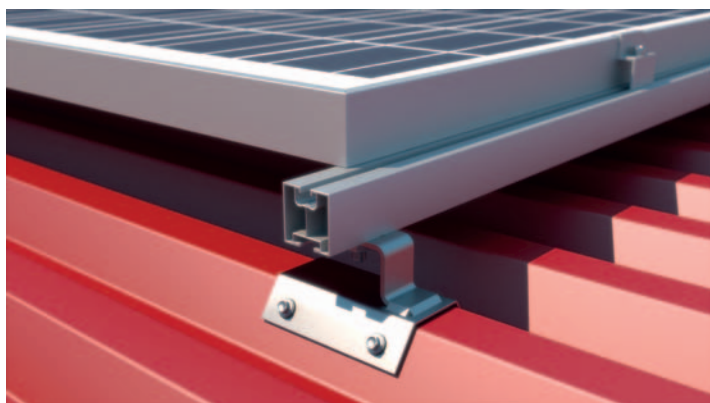
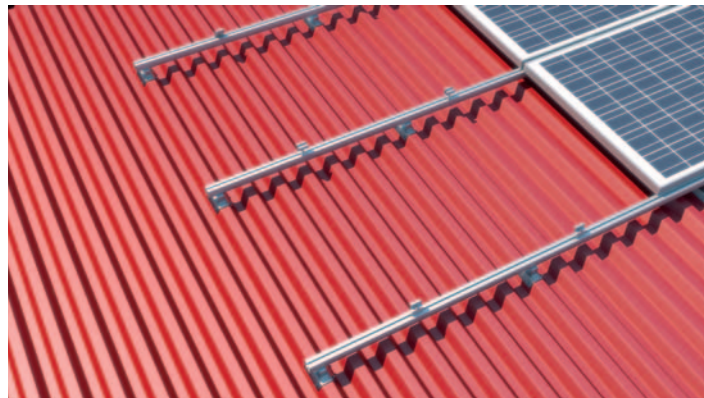
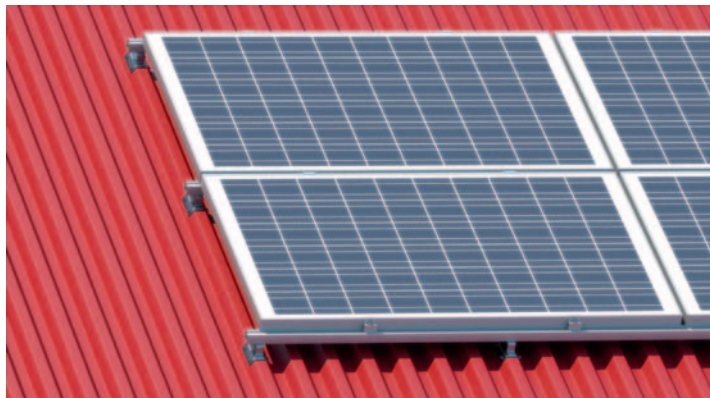


Art. 0128

Screws DIN 7504 with hexagon head and flange
 M4,8 13 ÷ 100
 M6,6 19 ÷ 150
 M8,3 13 ÷ 150
 Material: A2 1.4301 stainless steel

SYSTEM REM-12 HORIZONTAL V.3

TRAPEZOIDAL ROOF III



Art. 0111

Mounting Rail 40 type I
Measurements: 40x40
Length: 6200mm, 3100mm, 2070mm
Joining screws: top M8, bottom M10
Material: AL6060T6



Art. 019

Trapezoidal Roof Hook
Length: 120
Needed Measurements of Trapezoidal Sheet
Thickness 2mm, (5x)Hole: Ø7mm
Bar: 30x4, long Hole: 11x30 with Rubber EPDM
Use: Trapezoidal Roof
Material: A2 1.4301 stainless steel



Art. 0129

Hammerhead screws 28/15
Measurements:
M8 16 +70
M10 16+100
Use: Mounting Rail Art. 0110
Material: A2 1.4301 stainless steel



Art. 0134

Hexagon flange nuts with serration DIN 6923
M6
M8
M10
M12
Material: 1.4301 A2



Art. 0132

Hexagon socket cap screws DIN 912 with serration
M8 12÷60
Material: A2 1.4301 stainless steel



Art. 080

T-slot nuts, self aligning with spring ball M8
Used with hexagon socket cap screw Art. 0132
Use: for Mounting Rails Art. 0109, Art. 0110, Art. 062, Art. 0111, Art. 0112
Material: AL 6060T6



Art. 0147

Click
M8
Material: Aluminium
for rails: Art. 0109, Art. 0111



Art. 073

Middle Clamp
Length 50mm (standard)
Length 60mm – 100mm
Height 30mm
Thickness 3mm
Colors: plain aluminium/black
Material: AL 6060T6



Art. 075

End clamp
Length: 50 (standard)
Length: 70mm
Height: from 30mm to 50mm
Thickness 3mm
Colors: plain aluminium/black
Material: AL 6060T6



Art. 0128

Screws DIN 7504 with hexagon head and flange
M4,8 13÷100
M6,6 19÷150
M8,3 13 ÷150
Material: A2 1.4301 stainless steel