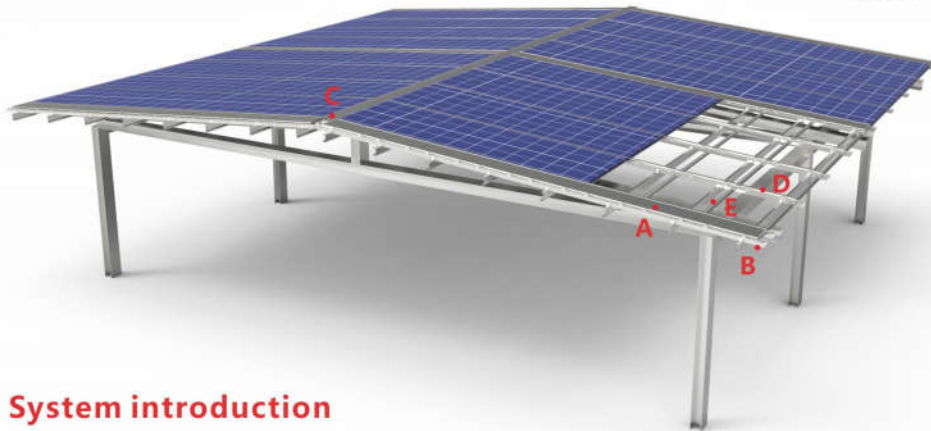


BIPV

(SS-BIPV-01)



System introduction

Our BIPV solution is developed for ordinary frame modules, and the solar system is integrated into the building roof through the combination of mounting and modules. It perfectly solves the roof waterproofing problem and the maintenance problem of the solar system. Main metal material are Aluminum-galvanized sheet and aluminum sheet. They are corrosion-resistant and have strong oxidation resistance in outdoor use. No sealing strip and glue is needed is needed. On the basis of meeting the mechanical calculation, customers can achieve the best cost.

Component List



Technical Data

Installation site: Building roof
 Installation angle: 5-45 degree
 PV modules: framed
 Module layout : Vertical or horizontal
 Max wind speed: 45m/s
 Material: Aluminum-galvanized sheet , aluminum & SUS304, hot galvanized fasteners
 Color: Silver Gray
 Standards: BS6399, JISC 8955, Eurocode 1, DIN 1055, AS/NZS 1170 and other standards
 Warranty: 10 years warranty

