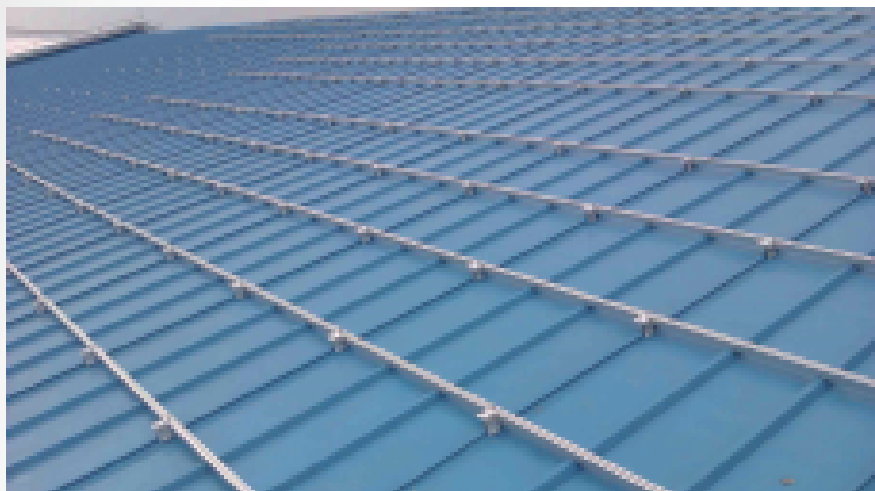


## Sheet-metal Rooftop Mounting System



Geco sheet-metal rooftop mounting system is suitable for factories and warehouse rooftop solar PV projects. The mounting structures of the solution is simple, reliable, and durable with features as below.

1. Light-weight aluminum structure, decreases load on the roof.
2. Clamps can be adapted to any kind of sheet-metal roof.
3. Topside structures are universally applicable.
4. Installation cost of lightning protection is low because of system's unique design.



### Technical Specifications

Structure Style:	Multi-point supporting monolayer rail structure
Foundation:	Sheet-Metal Roof
Module Size:	Any size
Module Layout:	Horizontal / Vertical
Module Angle:	Parallel to the slope of roof
Maximum Wind Load:	40m/s
Maximum Snow Load:	1.4KN/ m <sup>2</sup>
Material:	Anodizing Aluminum Alloy
Duration:	25 Years
Warranty:	15 Years

**CUSTOMIZABLE  
DESIGN  
AVAILABLE**



**Geco Renewable Energy Co., Ltd**

Shangnan International Building, No. 7 Nanfeng Road, Yundonghai, Sanshui District, Foshan City, Guangdong Province, China

Tel: +86-757-87668366 / +86-757-87668019 | E-mail: [geco@gecopv.com](mailto:geco@gecopv.com)

Website: [www.gecopv.com](http://www.gecopv.com)