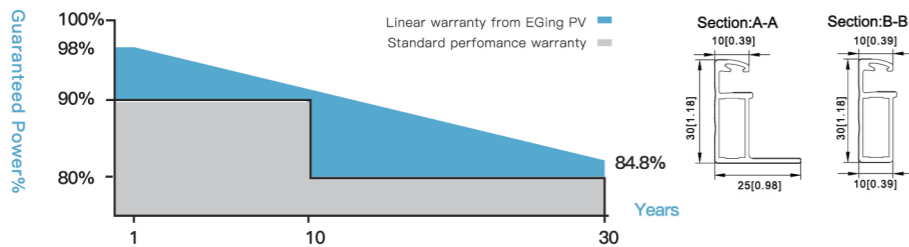
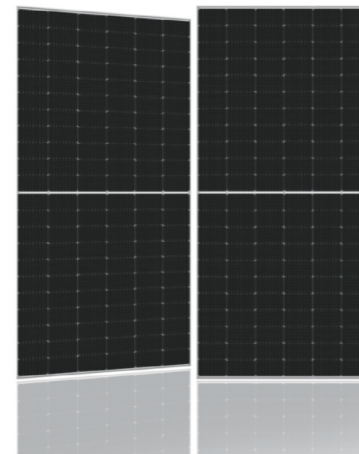


PRODUCT INTRO

GfMc Series

MONO CRYSTALLINE DOUBE GLASS SOLAR MODULE

485W~505W



QUALITY GUARANTEED

- ① Linear output power guaranteed
- ② 10 years product warranty
- ③ 30 years linear power output



高转换率
High Efficiency

Advanced solar cell technology ensures the high module efficiency up to 21.2%.

正公差保证
Positive Power Selection

Module will generate power selection of 0 to +5W.

出色的承载能力
Strong Load Capacity

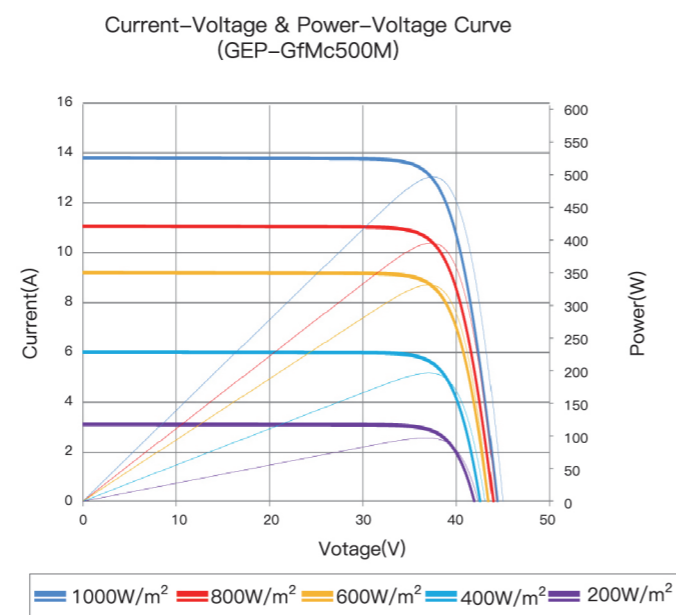
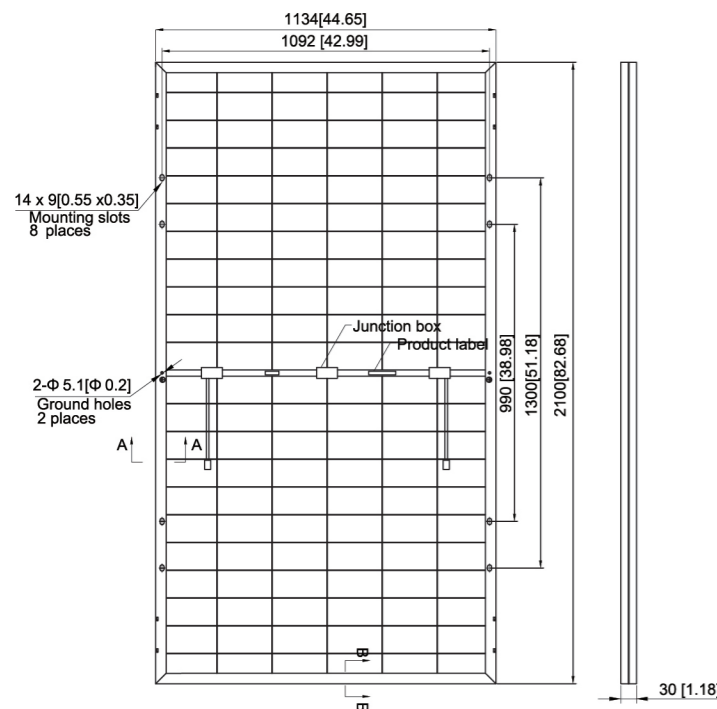
Module is capable to withstand 2400Pa wind loads and 5400Pa Snow loads.

ISO 9001
可靠的产品保证

Module is manufactured in accordance with international quality standards ISO9001

优异的防护性能
Higher Weatherproof Rating

接线盒提供高达 IP68 的防护等级 J-Box performs module with an environmental protection rating to IP68.



MODULE CHARACTERISTICS

Models	GEP-GfMc485M	GEP-GfMc490M	GEP-GfMc495M	GEP-GfMc500M	GEP-GfMc505M
	GEP-GfMc485MHGEP	GfMc490MHGEP	GfMc495MHGEP	GfMc500MHGEP	GfMc505MH
Maximum Power (Pmax)	485W	490W	495W	500W	505W
Positive Power Selection	0/+5W	0/+5W	0/+5W	0/+5W	0/+5W
Maximum Power Voltage (Vmp)	37.81V	37.99V	38.17V	38.35V	38.53V
Maximum Power Current(Imp)	12.83A	12.90A	12.97A	13.04A	13.11A
Open Circuit Voltage (Voc)	45.20V	45.33V	45.45V	45.59V	45.72V
Short Circuit Current (Isc)	13.72A	13.79A	13.85A	13.93A	14.00A
Module Efficiency	20.4%	20.6%	20.8%	21.0%	21.2%
Operating module Temperature	- 40°C ~ +85°C				
Maximum system(DC) Voltage	DC1000V/1500V(IEC)				
Maximum Series Fuse Rating	30A				
Nominal Module Operating Temperature	42±2°C				
Temperature Coefficients of Pmax	- 0.36%/°C				
Temperature Coefficients of Voc	- 0.304%/°C				
Temperature Coefficients of Isc	+ 0.050%/°C				

MECHANICAL CHARACTERISTICS

Solar Cell	182x91mm 10 Mono crystalline 182x91mm 10BB
Number of cells	132(6x22)
Dimensions	2100x1134x30mm (82.68x44.65x1.18 inches)
Weight	29.0Kg (63.93 lbs)
Front Glass	2.0mm (0.08 inches) front glass
Frame	Anodized aluminum alloy
Junction Box	IP68 rated
Cable	4mm ² solar cable 300mm (11.81 inches) Customized Length
Connector	MC4 PV-XT101.1/Z4S-abcde

PACKING

	20GP	40HC
Pieces per pallet	35	35
pallets per container	5	22
Pieces per container	175	770

STC: irradiance 1000 W/m², module temperature 25°C, AM=1.5; Tolerance of Pmax is within +/- 3%.