



Lithium iron phosphate battery



- ① AR4830(48V 27Ah)
- ② AR3630(36V 27Ah)
- ③ AR2460(24V 54Ah)
- ④ AR1212(12V 108Ah)

- Secure
 - Safer **LiFePO4 cell**
 - Accurate gas gauge **LED SOC Indicator**
 - **BMS** and **16 bits MCU** built-in prevent battery failure
- Superb
 - Up to **3000** cycle time
 - **IP67** for variety applications
 - **UL1973** for battery
- Simple
 - 13~14.1KG for single **1.03~1.38kWh**
 - **Equalizing charge** support
 - **M8 terminal** for easier parallel
 - **RS485(AR4830), CANbus interface**

Application



Power Supply

Back-up Power

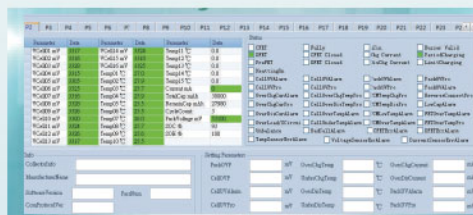
Energy Storage

Detail

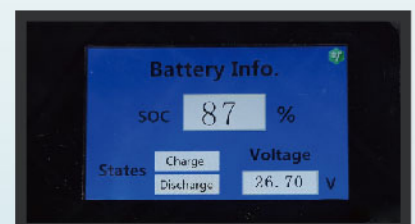
RS485/CANbus interface communicates battery status and reveals in 3 ways.



Panel



PC software



Battery Monitor (Optional)

Optional Tools



Monitor



Cabinet





Charger

Specification

Specification	AR4830 	AR3630 	AR2460 	AR1212 
Nominal Voltage	51.2V (48V)	38.4V (36V)	25.6V (24V)	12.8V (12V)
Rated Capacity (Ah)	27Ah	27Ah	54Ah	108Ah
Rated Capacity (Wh)	1382Wh	1037Wh	1382Wh	1382Wh
Maximum Charging Voltage	58.4V	44.4V	29.6V	14.8V
Discharging Cut-off Voltage	40V	30V	20V	10V
Maximum Discharging Current	50A	80A	100A	100A
Maximum Charging Current	50A	50A	60A	100A
Communication	RS485	CAN bus	CAN bus	CAN bus
Weight	14.1kg	13kg	14.1kg	14.1kg
Dimension (L*W*H)	260x180x258mm			

Cautions

-  Do not use in series connect
-  Do not use as starter battery

