

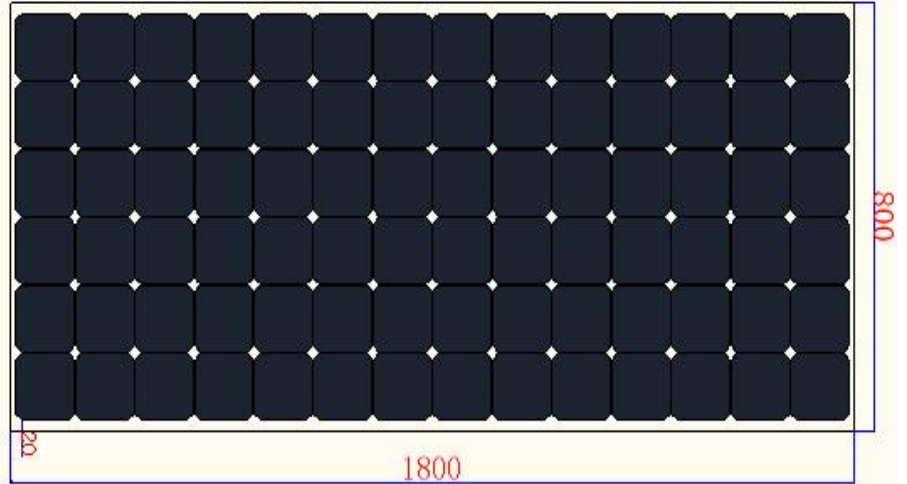


Professional And Reliable Solar Panel Manufacturer

Characteristics

Maximum power(Pm)	290W
Power Tolerance	±3%
Voltage at max power(Vmp)	48.7V
Current at max power(Imp)	5.95A
Open circuit voltage(Voc)	57.2V
Short circuit current(Isc)	6.46A
Operating Temperature	- 40℃ — +85℃
Maximum System Voltage	700V
Maximum Series Fuse Rating	15A

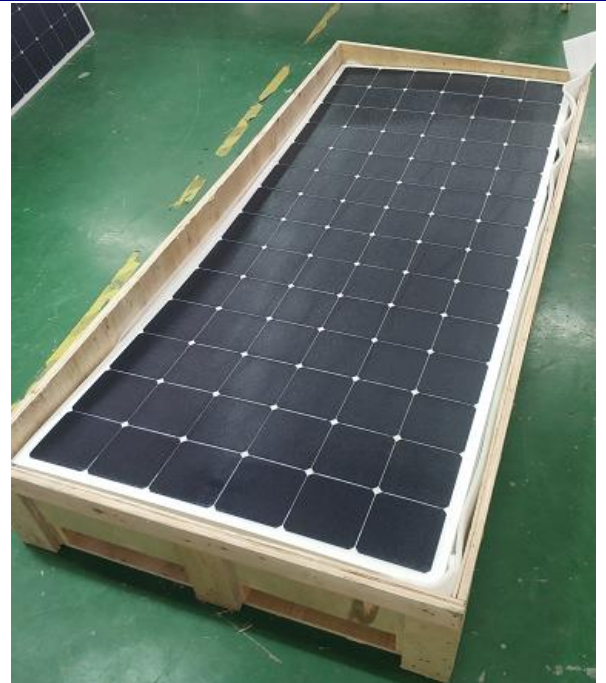
Drawing



Standard Test Condition Irrandiance 1000W/㎡, Module temperature 25℃,AM=1.5

Mechanical Characteristics

Solar cell:SunPower Cell(125x 125mm)
No.of cells and connections: 84=6x14pcs
Dimension of module: 1800*800*2.5mm
Junction Box/Connector: Ip65 rated with MC4
Materials: PET/ETFE+2EVA+SOLAR CELL+3EVA+PET
Cables: Photovoltaic Technology cable (4mm ² *0.9m)
Weight: 5.3KG
Packing Configuration: 60pcs/wooden case
Solar cell efficiency: ≥22%
Resistances :800g stell ball fall down from 1m height and 60m/s wind



Temperature Characteristics

Noct: 46℃ ± 2℃
Current temperature coefficient: 0.05%/°C
Voltage temperature coefficient: - 0.35%/°C
Power temperature coefficient: - 0.45%/°C

深圳市圣菲尔德新能源科技有限公司
Shenzhen Sunfield New Energy Technology Co.,Ltd
 Add:3rd floor,5th building, Tenghongxing Industrial Park, FengXin Road,Guangming District, Shenzhen, China.
 Tel: +86-0755-23243140
 Fax: +86-0755-23243140
www.sunfield-solar.com
Jacksonfu@sunfield-solar.com