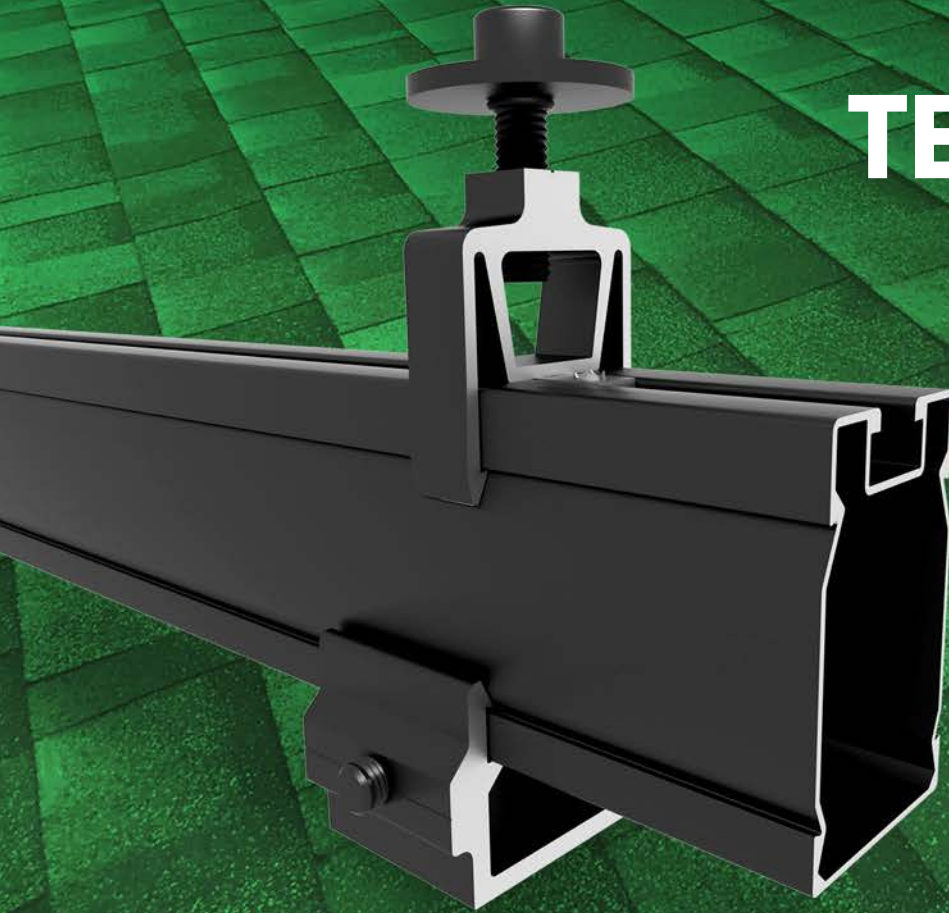




POP-ON TECHNOLOGY LETS YOU HEAR WHEN IT IS RIGHT



SMR Pitched Roof System

SunModo introduces the SMR Pitched Roof System, the best value pitched roof mounting system on the market.

With fast and easy Pop-On Clamps and L-Foot adaptors, professional installers can mount, adjust, and secure PV panels with a single tool.

Whether rafter or deck, portrait or landscape, the SMR System is the ideal solution for your solar installation. Save money on materials and installation time.

The SMR System Advantage

- ✓ The best value, best performing rail system on the market
- ✓ Lag-to-Panel single tool installation
- ✓ Pop-On universal clamps make installation fast, reliable and flexible
- ✓ A full range of roof attachments to meet every need
- ✓ Fastest install and lowest cost



SMR 100 Rail

4' span or more up to 90 psf snow load or 190 mph winds

The SMR System represents a huge leap in racking technology.

Optimized design makes the SMR Rails not only the lightest but also the strongest rails on the market. One tool assembly and Pop-On technology allow fast and worry-free installation.

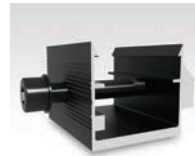
The cost and performance cannot be beaten.

Clamps & Grounding



Mid Clamp

The Bonding Pop-On Universal Mid Clamps accommodate PV module frame heights ranging from 30mm to 48mm. The fastest installing Mid Clamps on the market.



L Foot Adaptor

Fast and easy Pop-On L-Foot Adaptor speeds installation and eliminates old-fashioned T-Bolts. Install fast with full confidence in every attachment.



End Clamp

End Clamps are adjustable for different module frame heights and provide fast and secure attachment of modules.



Rail Splice

Structural bonding splice with fast and easy single bolt installation



Wire Management Clip

The clip attaches to the channel on the SMR rail to provide a neat and effective solution for PV wire management.



Grounding Lug

The Lug provides proper grounding of the PV System

Technical Data

Application	Pitched Roof
Roof Type	Composition shingle, Metal and Tile
Material	High grade aluminum and 304 stainless steel hardware
PV Modules	Compatible with all common module types
Module Orientation	Portrait and landscape
Roof Attachment	Rafter and decking
Structural Integrity	IBC compliant, stamped engineering letters available
Certificate	UL 2703 listed by ETL
Warranty	25 years