

### ● Brief Introduction

- 1) Can be applied to mountain areas.
- 2) The height of pipe pole can be adjusted slightly.
- 3) With great stability.
- 4) Applies to high wind and heavy snow regions.
- 5) Parts are high pre-assembled in factory to save the installation time and labor cost.



| Technical Parameters: |  |
|-----------------------|--|
| Application:          | Ground Open Area                           |
| Tilt:                 | 0°- 50°                                    |
| Module Layout:        | Landscape or Portrait                      |
| Wind Load:            | ≤60m/s                                     |
| Ground Clearance:     | 0.5m-2.0m                                  |
| Snow Load:            | 0.5kn/m <sup>2</sup> -2.0kn/m <sup>2</sup> |
| Design Criteria:      | ISO9001; CE; SGS; JIS8955: 2017            |
| Material:             | Q235 (Hot dip galvanized); SUS304          |

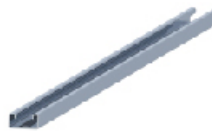
### ● Component Parts



Vertical Beam



Cross Beam



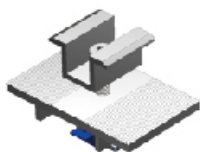
EW Backing Rod



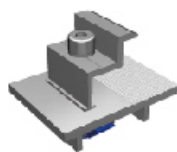
Beam Connector



Hoop



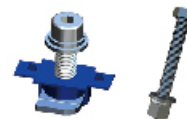
Mid Clamp Kits



End Clamp Kits



Triangle Fastener



Bolt Kits

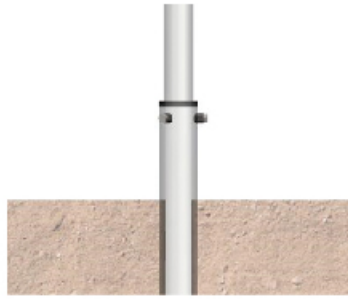


Pipe Pole

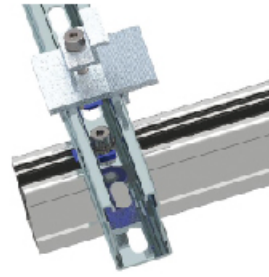
# CS-GM-Round Pipe



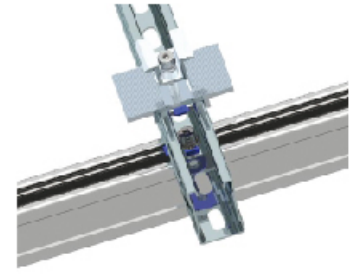
Ground Screw Pile  
without Flange



Height Adjusting



End Clamp Kits



Mid Clamp Kits

## ● Detailed View

