

More Powerful · More Reliable · More Intelligent

Huayu Globle Offices (Sales & Technical Support)

Huayu Australasia

Tel: +61 412 898 238
E-mail: info@huayu-energy.com
Add: 393 Upper Heidelberg Road,
Ivanhoe, VIC 3079, Australia

Huayu EMEA

Tel: +48-664 340 224
E-mail: info@huayu-energy.com
Add: Zygmuntowska 10, Cracow,
Poland

Huayu USA

Tel: +1(949)293-7016
E-mail: info@huayu-energy.com
Add: 20 Fairbanks, Irvine, CA 92618,
USA

Huayu Brazil

Tel: +55-(11)99775-4778
E-mail: info@huayu-energy.com
Add: Rua Miguel Mota 230-Vila
Canero, Sao Paulo, SP
03191-110, Brazil

Huayu Mexico

Tel: +52-81 1022 6679
E-mail: info@huayu-energy.com
Add: Calle C 500, Almacentro
Industrial, 66640 Cd Apodaca
Monterrey, Mexico

Huayu Chile

Tel: +56-996 527 136
E-mail: info@huayu-energy.com
Add: Tamarugal 4043, Iquique
1100000, Chile

Huayu West Africa

Tel: +234-815 486 3996
E-mail: info@huayu-energy.com
Add: 2nd floor, UAC Commercial
Complex, Plot 273 Ademolegun
Street Central Business District,
Abuja, Nigeria

Huayu Vietnam

Tel: +84 908 731193
E-mail: info@huayu-energy.com
Add: 167-169 Dien Bien Phu Street, Da
Kao Ward, District 1, Ho Chi Minh
City, Vietnam

Huayu Thailand

Tel: +66 95 3978269
E-mail: info@huayu-energy.com
Add: 29/531 soi 10 Chaengwattana Rd,
Bangpood, Pakkred, Nontaburi
11120, Thailand

Huayu Peru

Tel: +511-958343858
E-mail: info@huayu-energy.com
Add: Calle Porcel # 214, Maria Isabel,
Arequipa, Peru

Huayu France

Tel: +33 884 566 514 0011
E-mail: info@huayu-energy.com
Add: 7 route de carbon blanc, 33310,
Lormont, France

Huayu Israel

Tel: +972-5444 89996
Email: info@huayu-energy.com
Add: 2 Oren Street, Israel 4585500

Huayu Headquarters

Tel: +86-574-8925 8801
E-mail: info@huayu-energy.com
Add: No.456 Xingning Road, Ningbo 315100, P.R.China

Huayu(Ningbo)New Energy Technologies Co., Ltd.

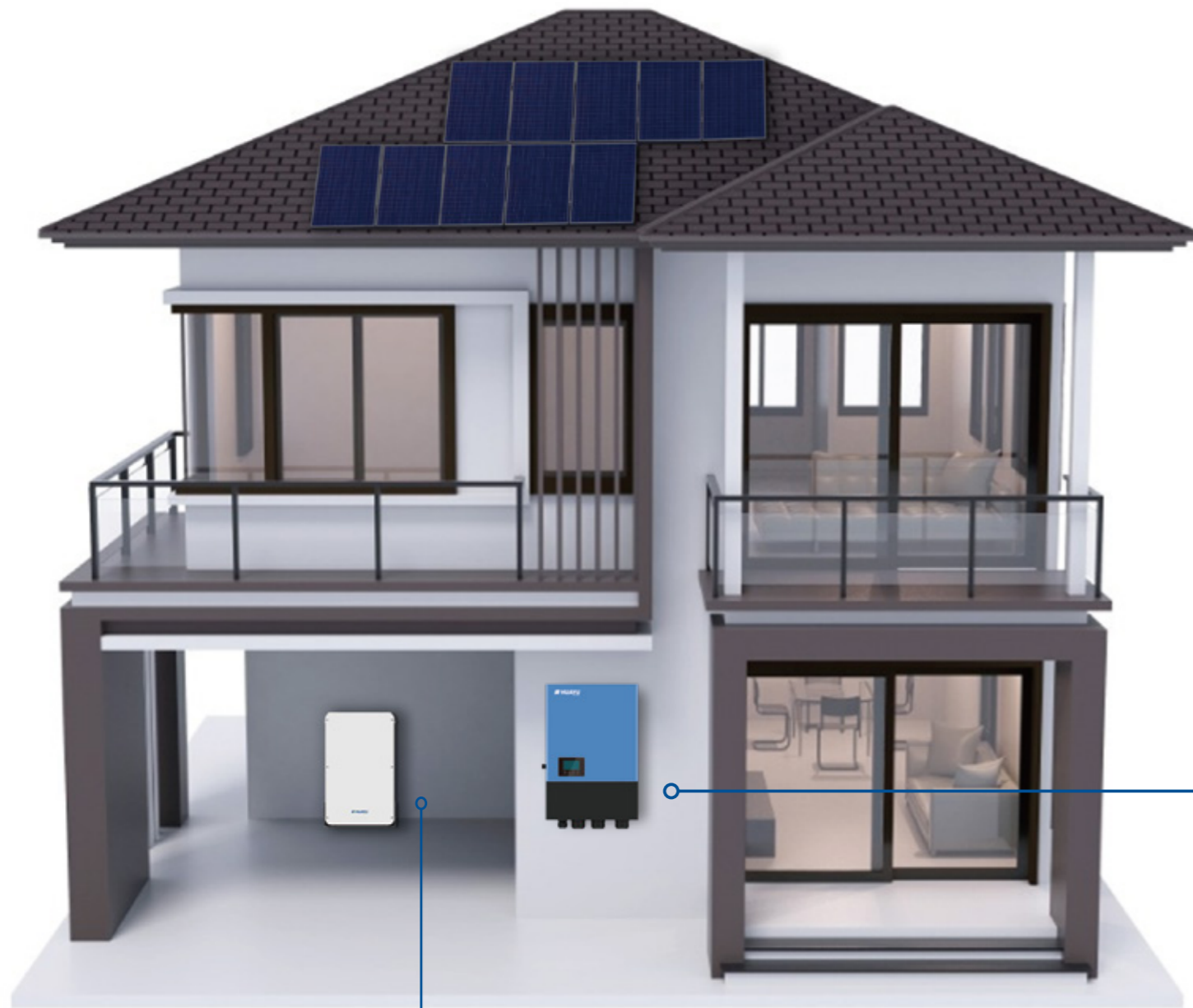
www.huayu-solar.com

Home Energy Storage Solutions

Hybrid Inverter · Lithium Battery



For Our Home Energy Indenpence.



More Powerful · More Reliable · More Intelligent

Huayu New Energy is a global leader in the design and manufacture of all-in-one battery-based solar inverters for energy storage to realize home owners' self-consumption and grid independence worldwide.

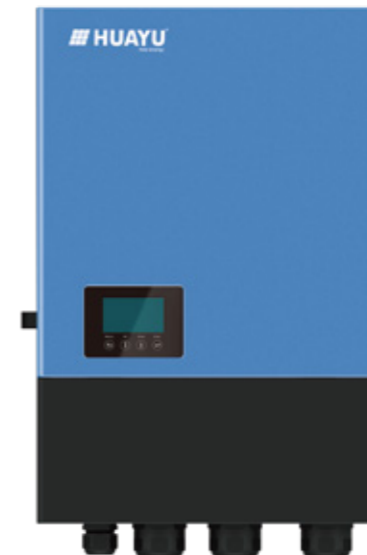
A typical Huayu all-in-one hybrid inverter can work with a battery bank as backup power to make the best use of time-of-use or to keep a continuous power supply in case of grid outage or poor wind turbine/diesel generator performance, which may help home owners maximize self-consumption and enhance energy independence.

Compared with a traditional grid-tie solar inverter only working to convert DC power from PV array to AC power for home usage/grid feeding when the grid is on, the full range of batter-based Huayu energy storage inverters provide home owner a variety of choices to figure out a stable and relatively inexpensive power supply for daily life especially when feed-in tariffs are decreasing or absent and grid supplies are becoming less stable and more expensive.

Compared with most of solar hybrid inverters in the market, Huayu hybrid inverter is featured with unbeatable advantages as follows:

- Capable for battery charging from diesel generator & grid other besides PV array
- Max. charging/discharging current 220A
- Six-time-period of usage setting for battery charging/discharging
- Max. parallel connection up to 10 units for system expansion
- Compatible with lithium-ion battery and lead-acid battery
- Zero exporting function with 200ms fast reaction

Hybrid Inverter



Lithium Battery

Power Bank

- HYB-4850B
- HYB-48100B
- HYB-48150B
- HYB-48200B



Battery Module

- HYB-4850M
- HYB-4875M



NA Version

- HYH-7.6K-NA
- HYH-8K-NA
- HYH-9K-NA
- HYH-10K-NA
- HYH-7.6K-NA-HV
- HYH-8K-NA-HV
- HYH-9K-NA-HV
- HYH-10K-NA-HV

EU Version

- HYH-3K-Pro
- HYH-3.6K-Pro
- HYH-4K-Pro
- HYH-4.6K-Pro
- HYH-5K-Pro
- HYH-6K-Pro
- HYH-4K-Pro-HV
- HYH-5K-Pro-HV
- HYH-6K-Pro-HV

AC Coupled

- HYH-3K-AC
- HYH-3.6K-AC
- HYH-5K-AC

Off-Grid

- HYL-3000
- HYL-4000
- HYL-5000

Hybrid Inverter

NA Version·Low Battery Voltage(40-60Vdc)



HYH-7.6K-NA

HYH-8K-NA

Features



Specifications

Datasheet	HYH-7.6K-NA	HYH-8K-NA
Battery Parameters		
Compatible Battery Type	Lithium-ion, Lead-acid	Lithium-ion, Lead-acid
Nominal Battery Voltage	48V	48V
Battery Voltage Range	40V ~ 60V	40V ~ 60V
Capacity of Battery	2~40kWh	2~40kWh
Maximum Charging/Discharging Current	190A/190A	220A/220A
Maximum Charging/Discharging Power	7600W	8000W
Max. Charging Voltage	59V	59V
Charging Curve(Lithium-ion)	3 stages	3 stages
Charging Curve(Lead-acid)	3 stages	3 stages
Depth of Discharge(Lithium-ion/Lead-acid)	80%/50%	80%/50%
Input DC (PV Side)		
Max. DC Input Power	6000W/6000W/12000W	6000W/6000W/12000W
Max. DC Input Power for Single MPPT	12000W	12000W
DC Input Voltage Range	100V ~ 600V	100V ~ 600V
Nominal DC Input Voltage	360V	360V
MPPT Operating Voltage Range	60V ~ 480V	60V ~ 480V
Full Power MPPT Voltage Range	155V~480V	165V~480V
Start-up Voltage	140V	140V
Max DC Input Current	13A/13A/27A	13A/13A/27A
Max DC Input Short Current	17A/17A/34A	17A/17A/34A
MPPT Number(Strings per MPPT)	3(1/1/2)	3(1/1/2)
Output AC(Grid)		
Nominal Output Power	7600W	8000W
Max. Output Power	8400VA	8800VA
Nominal AC Voltage	240V	240V
Operation Phase	Split Phase 240V/120V	Split Phase 240V/120V
Max. Input/Output Current	38.5A	38.5A
Nominal AC Frequency	50/60Hz	50/60Hz
THDi	<3%	<3%
Power Factor	-0.8 ~ +0.8 adjustable	-0.8 ~ +0.8 adjustable
UPS Output - with Battery		
UPS Max. Output Power without Solar	8000W	8000W
UPS Max. Output Power with Solar	8000W	8000W
UPS Nominal Output Voltage	240V	240V
UPS Nominal Output Frequency	50/60Hz	50/60Hz
UPS Nominal Output Current	33.5A	33.5A
Peak Power	1.1xPn,30min/1.25xPn,5min/1.5xPn,30s/2xPn,10s	
THDv	<3%	<3%
Switching Time	10ms	10ms
Efficiency		
MPPT Efficiency	99.90%	99.90%
Max. Efficiency	98.00%	98.00%
EU Efficiency	97.50%	97.50%
Battery Charging Efficiency	95.00%	95.00%
Battery Discharging Efficiency	95.00%	95.00%
Protection		
Reverse Polarity Protection	YES	YES
Anti-islanding Protection	YES	YES
AC Short-circuit Protection	YES	YES
Leakage Current Protection	YES	YES
Grid Monitoring	YES	YES
DC Switch	YES	YES
Ingress Protect Degree	IP65	IP65
PV Insulation Detection	YES	YES
Ground Fault Monitoring	YES	YES
Over Current Protection	YES	YES
Over Voltage Protection	YES	YES
Battery Soft Start Protection	YES	YES
SPD Protection	YES	YES
AFCI	YES	YES
RSD	OPT	OPT
General Data		
Dimension(mm)	650Wx440Hx220D	650Wx440Hx220D
Weight(kg)	38kg	38kg
Display	Color LCD	Color LCD
Topology	Tranformerless(Solar), HF(Battery)	Tranformerless(Solar), HF(Battery)
Ambient Temperature Range	-25 ~ 60°C	-25 ~ 60°C
Standby Losses	<10W	<10W
Cooling	Fan	Fan
Relative Humidity Range	0 ~ 100%	0 ~ 100%
Max. Operating Altitude	2000m	2000m
Noise	<50dB	<50dB
Communication	RS485,Wi-Fi,Ethernet,4G	RS485,Wi-Fi,Ethernet,4G
Warranty	10 Years	10 Years
Standard & Certification		
EMC	IEC62109-1-2	
Safety Standard	UL 1741	
Grid Standards	IEEE1547	

Hybrid Inverter

NA Version·Low Battery Voltage(40-60Vdc)



HYH-9K-NA

HYH-10K-NA

HYH-12K-NA

Features



Specifications

Datasheet	HYH-9K-NA	HYH-10K-NA	HYH-12K-NA
Battery Parameters			
Compatible Battery Type	Lithium-ion, Lead-acid	Lithium-ion, Lead-acid	Lithium-ion, Lead-acid
Nominal Battery Voltage	48V	48V	48V
Battery Voltage Range	40V~60V	40V~60V	40V~60V
Capacity of Battery	2~40kWh	2~40kWh	2~40kWh
Maximum Charging/Discharging Current	220A/220A	220A/220A	250A/250A
Maximum Charging/Discharging Power	9000W	10000W	12000W
Max. Charging Voltage	59V	59V	59V
Charging Curve(Lithium-ion)	3 stages	3 stages	3 stages
Charging Curve(Lead-acid)	3 stages	3 stages	3 stages
Depth of Discharge(Lithium-ion/Lead-acid)	80%/50%	80%/50%	80%/50%
Input DC (PV Side)			
Max. DC Input Power	6000W/6000W/12000W	6000W/6000W/12000W	6000W/6000W/12000W
Max. DC Input Power for Single MPPT	12000W	12000W	12000W
DC Input Voltage Range	100V~600V	100V~600V	100V~600V
Nominal DC Input Voltage	360V	360V	360V
MPPT Operating Voltage Range	60V~480V	60V~480V	60V~480V
Full Power MPPT Voltage Range	185V~480V	205V~480V	230V~480V
Start-up Voltage	140V	140V	140V
Max DC Input Current	13A/13A/27A	13A/13A/27A	13A/13A/27A
Max DC Input Short Current	17A/17A/34A	17A/17A/34A	17A/17A/34A
MPPT Number(Strings per MPPT)	3(1/1/2)	3(1/1/2)	3(1/1/2)
Output AC(Grid)			
Nominal Output Power	9000W	10000W	12000W
Max. Output Power	9900VA	11000VA	13200VA
Nominal AC Voltage	240V	240V	240V
Operation Phase	Split Phase 240V/120V	Split Phase 240V/120V	Split Phase 240V/120V
Max. Input/Output Current	43A	48A	55A
Nominal AC Frequency	50/60Hz	50/60Hz	50/60Hz
THDi	<3%	<3%	<3%
Power Factor	-0.8~+0.8 adjustable	-0.8~+0.8 adjustable	-0.8~+0.8 adjustable
UPS Output - with Battery			
UPS Max. Output Power without Solar	9000W	10000W	11500W
UPS Max. Output Power with Solar	10000W	10000W	12000W
UPS Nominal Output Voltage	240V	240V	240V
UPS Nominal Output Frequency	50/60Hz	50/60Hz	50/60Hz
UPS Nominal Output Current	37.5A	42A	48A
Peak Power	1.1xPn,30min/1.25xPn,5min/1.5xPn,30s/2xPn,10s		
THDv	<3%	<3%	<3%
Switching Time	10ms	10ms	20ms
Efficiency			
MPPT Efficiency	99.90%	99.90%	99.90%
Max. Efficiency	98.00%	98.00%	98.00%
EU Efficiency	97.50%	97.50%	97.50%
Battery Charging Efficiency	95.00%	95.00%	95.00%
Battery Discharging Efficiency	95.00%	95.00%	95.00%
Protection			
Reverse Polarity Protection	YES	YES	YES
Anti-islanding Protection	YES	YES	YES
AC Short-circuit Protection	YES	YES	YES
Leakage Current Protection	YES	YES	YES
Grid Monitoring	YES	YES	YES
DC Switch	YES	YES	YES
Ingress Protect Degree	IP65	IP65	IP65
PV Insulation Detection	YES	YES	YES
Ground Fault Monitoring	YES	YES	YES
Over Current Protection	YES	YES	YES
Over Voltage Protection	YES	YES	YES
Battery Soft Start Protection	YES	YES	YES
SPD Protection	YES	YES	YES
AFCl	YES	YES	YES
RSD	OPT	OPT	OPT
General Data			
Dimension(mm)	650Wx440Hx220D	650Wx440Hx220D	650Wx440Hx220D
Weight(kg)	38kg	38kg	38kg
Display	Color LCD	Color LCD	Color LCD
Topology	Transformerless(Solar), HF(Battery)	Transformerless(Solar), HF(Battery)	Transformerless(Solar), HF(Battery)
Ambient Temperature Range	-25~60°C	-25~60°C	-25~60°C
Standby Losses	<10W	<10W	<10W
Cooling	Fan	Fan	Fan
Relative Humidity Range	0~100%	0~100%	0~100%
Max. Operating Altitude	2000m	2000m	2000m
Noise	<50dB	<50dB	<50dB
Communication	RS485,Wi-Fi,Ethernet,4G	RS485,Wi-Fi,Ethernet,4G	RS485,Wi-Fi,Ethernet,4G
Warranty	10 Years	10 Years	10 Years
Standard & Certification			
EMC	IEC62109-1-2		
Safety Standard	UL 1741		
Grid Standards	IEEE1547		

Hybrid Inverter

NA Version·High Battery Voltage(90-450Vdc)



HYH-7.6K-NA-HV

HYH-8K-NA-HV

Features



Specifications

Datasheet	HYH-7.6K-NA-HV	HYH-8K-NA-HV
Battery Parameters		
Compatible Battery Type	Lithium-ion, Lead-acid	Lithium-ion, Lead-acid
Nominal Battery Voltage	300V	300V
Battery Voltage Range	200V ~ 550V	200V ~ 550V
Capacity of Battery	2~40kWh	2~40kWh
Maximum Charging/Discharging Current	220A/220A	220A/220A
Maximum Charging/Discharging Power	10000W	10000W
Max. Charging Voltage	59V	59V
Charging Curve(Lithium-ion)	3 stages	3 stages
Charging Curve(Lead-acid)	3 stages	3 stages
Depth of Discharge(Lithium-ion/Lead-acid)	80%/50%	80%/50%
Input DC (PV Side)		
Max. DC Input Power	15200W	16000W
Max. DC Input Power for Single MPPT	12000W	12000W
DC Input Voltage Range	100V ~ 600V	100V ~ 600V
Nominal DC Input Voltage	360V	360V
MPPT Operating Voltage Range	60V ~ 480V	60V ~ 480V
Full Power MPPT Voltage Range	150V~480V	150V~480V
Start-up Voltage	100V	100V
Max DC Input Current	27A/27A	27A/27A
Max DC Input Short Current	30A/30A	30A/30A
MPPT Number/(Strings per MPPT)	2(2+2)	2(2+2)
Output AC(Grid)		
Nominal Output Power	7600W	8000W
Max. Output Power	10000VA	10000VA
Nominal AC Voltage	240V	240V
Operation Phase	Single Phase/Split phase	Single Phase/Split phase
Max. Input/Output Current	38.5A	38.5A
Nominal AC Frequency	50/60Hz	50/60Hz
THDi	<3%	<3%
Power Factor	-0.8 ~ +0.8 adjustable	-0.8 ~ +0.8 adjustable
UPS Output - with Battery		
UPS Max. Output Power without Solar	7600W	7600W
UPS Max. Output Power with Solar	8000W	8000W
UPS Nominal Output Voltage	240V	240V
UPS Nominal Output Frequency	50/60Hz	50/60Hz
UPS Nominal Output Current	33.5A	33.5A
Peak Power	1.1xPn,30min/1.25xPn,5min/1.5xPn,30s/2xPn,10s	
THDv	<3%	<3%
Switching Time	10ms	10ms
Efficiency		
MPPT Efficiency	99.90%	99.90%
Max. Efficiency	98.00%	98.00%
EU Efficiency	97.50%	97.50%
Battery Charging Efficiency	95.00%	95.00%
Battery Discharging Efficiency	95.00%	95.00%
Protection		
Reverse Polarity Protection	YES	YES
Anti-islanding Protection	YES	YES
AC Short-circuit Protection	YES	YES
Leakage Current Protection	YES	YES
Grid Monitoring	YES	YES
DC Switch	YES	YES
Ingress Protect Degree	IP65	IP65
PV Insulation Detection	YES	YES
Ground Fault Monitoring	YES	YES
Over Current Protection	YES	YES
Over Voltage Protection	YES	YES
Battery Soft Start Protection	YES	YES
SPD Protection	YES	YES
AFCI	YES	YES
RSD	OPT	OPT
General Data		
Dimension(mm)	650Wx440Hx220D	650Wx440Hx220D
Weight(kg)	35kg	35kg
Display	Color LCD	Color LCD
Topology	Tranformerless(Solar), HF(Battery)	Tranformerless(Solar), HF(Battery)
Ambient Temperature Range	-25 ~ 60°C	-25 ~ 60°C
Standby Losses	<10W	<10W
Cooling	Fan	Fan
Relative Humidity Range	0 ~ 100%	0 ~ 100%
Max. Operating Altitude	2000m	2000m
Noise	<50dB	<50dB
Communication	RS485,Wi-Fi,Ethernet, 4G	RS485,Wi-Fi,Ethernet, 4G
Warranty	10 Years	10 Years
Standard & Certification		
EMC	IEC62109-1-2	
Safety Standard	UL 1741	
Grid Standards	IEEE1547	

Hybrid Inverter

NA Version·High Battery Voltage(90-450Vdc)



HYH-9K-NA-HV

HYH-10K-NA-HV

HYH-12K-NA-HV

Features



Specifications

Datasheet	HYH-9K-NA-HV	HYH-10K-NA-HV	HYH-12K-NA-HV
Battery Parameters			
Compatible Battery Type	Lithium-ion, Lead-acid	Lithium-ion, Lead-acid	Lithium-ion, Lead-acid
Nominal Battery Voltage	300V	300V	300V
Battery Voltage Range	200V ~ 550V	200V ~ 550V	200V ~ 550V
Capacity of Battery	2~40kWh	2~40kWh	2~40kWh
Maximum Charging/Discharging Current	220A/220A	220A/220A	220A/220A
Maximum Charging/Discharging Power	10000W	12000W	12000W
Max. Charging Voltage	59V	59V	59V
Charging Curve(Lithium-ion)	3 stages	3 stages	3 stages
Charging Curve(Lead-acid)	3 stages	3 stages	3 stages
Depth of Discharge(Lithium-ion/Lead-acid)	80%/50%	80%/50%	80%/50%
Input DC (PV Side)			
Max. DC Input Power	18000W	20000W	22000W
Max. DC Input Power for Single MPPT	12000W	12000W	12000W
DC Input Voltage Range	100V ~ 600V	100V ~ 600V	100V ~ 600V
Nominal DC Input Voltage	360V	360V	360V
MPPT Operating Voltage Range	60V ~ 480V	60V ~ 480V	60V ~ 480V
Full Power MPPT Voltage Range	185V~480V	205V~480V	225V~480V
Start-up Voltage	100V	100V	100V
Max DC Input Current	27A/27A	27A/27A	27A/27A
Max DC Input Short Current	30A/30A	30A/30A	30A/30A
MPPT Number(Strings per MPPT)	2(2+2)	2(2+2)	2(2+2)
Output AC(Grid)			
Nominal Output Power	9000W	10000W	12000W
Max. Output Power	11300VA	13000VA	13200VA
Nominal AC Voltage	240V	240V	240V
Operation Phase	Single Phase/Split phase	Single Phase/Split phase	Single Phase/Split phase
Max. Input/Output Current	43A	48A	58A
Nominal AC Frequency	50/60Hz	50/60Hz	50/60Hz
THDi	<3%	<3%	<3%
Power Factor	-0.8 ~ +0.8 adjustable	-0.8 ~ +0.8 adjustable	-0.8 ~ +0.8 adjustable
UPS Output - with Battery			
UPS Max. Output Power without Solar	9000W	10000W	12000W
UPS Max. Output Power with Solar	9000W	10000W	12000W
UPS Nominal Output Voltage	240V	240V	240V
UPS Nominal Output Frequency	50/60Hz	50/60Hz	50/60Hz
UPS Nominal Output Current	37.5A	42A	48A
Peak Power	1.1xPn,30min/1.25xPn,5min/1.5xPn,30s/2xPn,10s		
THDv	<3%	<3%	<3%
Switching Time	10ms	10ms	20ms
Efficiency			
MPPT Efficiency	99.90%	99.90%	99.90%
Max. Efficiency	98.00%	98.00%	98.00%
EU Efficiency	97.50%	97.50%	97.50%
Battery Charging Efficiency	95.00%	95.00%	95.00%
Battery Discharging Efficiency	95.00%	95.00%	95.00%
Protection			
Reverse Polarity Protection	YES	YES	YES
Anti-islanding Protection	YES	YES	YES
AC Short-circuit Protection	YES	YES	YES
Leakage Current Protection	YES	YES	YES
Grid Monitoring	YES	YES	YES
DC Switch	YES	YES	YES
Ingress Protect Degree	IP65	IP65	IP65
PV Insulation Detection	YES	YES	YES
Ground Fault Monitoring	YES	YES	YES
Over Current Protection	YES	YES	YES
Over Voltage Protection	YES	YES	YES
Battery Soft Start Protection	YES	YES	YES
SPD Protection	YES	YES	YES
AFCI	YES	YES	YES
RSD	OPT	OPT	OPT
General Data			
Dimension(mm)	650Wx440Hx220D	650Wx440Hx220D	650Wx440Hx220D
Weight(kg)	35kg	35kg	35kg
Display	Color LCD	Color LCD	Color LCD
Topology	Tranformerless(Solar), HF(Battery)	Tranformerless(Solar), HF(Battery)	Tranformerless(Solar), HF(Battery)
Ambient Temperature Range	-25 ~ 60°C	-25 ~ 60°C	-25 ~ 60°C
Standby Losses	<10W	<10W	<10W
Cooling	Fan	Fan	Fan
Relative Humidity Range	0 ~ 100%	0 ~ 100%	0 ~ 100%
Max. Operating Altitude	2000m	2000m	2000m
Noise	<50dB	<50dB	<50dB
Communication	RS485,Wi-Fi,Ethernet, 4G	RS485,Wi-Fi,Ethernet, 4G	RS485,Wi-Fi,Ethernet, 4G
Warranty	10 Years	10 Years	10 Years
Standard & Certification			
EMC	IEC62109-1-2		
Safety Standard	UL 1741		
Grid Standards	IEEE 1547		

Hybrid Inverter

EU Version·Low Battery Voltage(40-60Vdc)



HYH-3K-Pro

HYH-3.6K-Pro

Features



Specifications

Datasheet	HYH-3K-Pro	HYH-3.6-Pro
Battery Parameters		
Compatible Battery Type	Lithium-ion, Lead-acid	Lithium-ion, Lead-acid
Nominal Battery Voltage	48V/51.2V	48V/51.2V
Battery Voltage Range	40V ~ 60V	40V ~ 60V
Capacity of Battery	2~40kWh	2~40kWh
Maximum Charging/Discharging Current	66A/66A	66A/66A
Maximum Charging/Discharging Power	3600W/3600W	3600W/3600W
Max. Charging Voltage	59V	59V
Charging Curve(Lithium-ion)	3 stages	3 stages
Charging Curve(Lead-acid)	3 stages	3 stages
Depth of Discharge(Lithium-ion/Lead-acid)	80%/50%	80%/50%
Input DC (PV Side)		
Max. DC Input Power	6600W	7000W
Max. DC Input Power for Single MPPT	4000W	4000W
DC Input Voltage Range	100V ~ 550V	100V ~ 550V
Nominal DC Input Voltage	360V	360V
MPPT Operating Voltage Range	120V ~ 500V	120V ~ 500V
Full Power MPPT Voltage Range	140V~440V	180V~440V
Start-up Voltage	140V	140V
Max DC Input Current	12.5A/12.5A	12.5A/12.5A
Max DC Input Short Current	13.7A/13.7A	13.7A/13.7A
MPPT Number(Strings per MPPT)	2(1+1)	2(1+1)
Output AC(Grid)		
Nominal Output Power	3000W	3600W
Max. Output Power	3000VA	3600VA
Nominal AC Voltage	230V	230V
Operation Phase	Single Phase	Single Phase
Max. Input/Output Current	15A	16A
Nominal AC Frequency	50/60Hz	50/60Hz
THDi	<3%	<3%
Power Factor	-0.8 ~ +0.8 adjustable	-0.8 ~ +0.8 adjustable
UPS Output - with Battery		
UPS Max. Output Power without Solar	3000W	3600W
UPS Max. Output Power with Solar	3000W	3600W
UPS Nominal Output Voltage	230V	230V
UPS Nominal Output Frequency	50/60Hz	50/60Hz
UPS Nominal Output Current	13A	15.6A
Peak Power	4500W,30s	4500W,30s
THDv	<3%@R-load	<3%@R-load
Switching Time	10ms	10ms
Efficiency		
MPPT Efficiency	99.90%	99.90%
Max. Efficiency	97.90%	97.90%
EU Efficiency	97.50%	97.50%
Battery Charging Efficiency	94.50%	94.50%
Battery Discharging Efficiency	94.50%	94.50%
Protection		
Reverse Polarity Protection	YES	YES
Anti-islanding Protection	YES	YES
AC Short-circuit Protection	YES	YES
Leakage Current Protection	YES	YES
Grid Monitoring	YES	YES
DC Switch	YES	YES
Ingress Protect Degree	IP65/NEMA4X	IP65/NEMA4X
PV Insulation Detection	YES	YES
Ground Fault Monitoring	YES	YES
Over Current Protection	YES	YES
Over Voltage Protection	YES	YES
Battery Soft Start Protection	YES	YES
SPD Protection	NO	NO
General Data		
Dimension(mm)	455Wx476(565)Hx181D	455Wx476(565)Hx181D
Weight(kg)	20kg	20kg
Display	Color LCD	Color LCD
Topology	Transformerless(Solar), HF(Battery)	Transformerless(Solar), HF(Battery)
Ambient Temperature Range	-25 ~ 60°C	-25 ~ 60°C
Standby Losses	<10W	<10W
Cooling	Natural Convection	Natural Convection
Relative Humidity Range	0 ~ 100%	0 ~ 100%
Max. Operating Altitude	2000m	2000m
Noise	<25dB	<25dB
Communication	RS485,WI-FI,Ethernet,4G	RS485,WI-FI,Ethernet,4G
Warranty	5 Years	5 Years
Standard & Certification		
EMC	EN61000-6-1, EN61000-6-2, EN61000-6-3	
Safety Standard	IEC62109-1, IEC62109-2, IEC62040	
Grid Standards	AS4777, VDE0126, VDE-AR-N4105, G83, G59, EN50438, EN50439, CE10-21, CE10-16, NRS097	

Hybrid Inverter

EU Version·Low Battery Voltage(40-60Vdc)



HYH-4K-Pro

HYH-4.6K-Pro

Features



Specifications

Datasheet	HYH-4K-Pro	HYH-4.6-Pro
Battery Parameters		
Compatible Battery Type	Lithium-ion, Lead-acid	Lithium-ion, Lead-acid
Nominal Battery Voltage	48V/51.2V	48V/51.2V
Battery Voltage Range	40V ~ 60V	40V ~ 60V
Capacity of Battery	2~40kWh	2~40kWh
Maximum Charging/Discharging Current	80A/80A	80A/80A
Maximum Charging/Discharging Power	4000W/4000W	4000W/4000W
Max. Charging Voltage	59V	59V
Charging Curve(Lithium-ion)	3 stages	3 stages
Charging Curve(Lead-acid)	3 stages	3 stages
Depth of Discharge(Lithium-ion/Lead-acid)	80%/50%	80%/50%
Input DC (PV Side)		
Max. DC Input Power	7000W	8000W
Max. DC Input Power for Single MPPT	4000W	4000W
DC Input Voltage Range	100V ~ 550V	100V ~ 550V
Nominal DC Input Voltage	360V	360V
MPPT Operating Voltage Range	120V ~ 500V	120V ~ 500V
Full Power MPPT Voltage Range	180V~440V	225V~440V
Start-up Voltage	140V	140V
Max DC Input Current	12.5A/12.5A	12.5A/12.5A
Max DC Input Short Current	13.7A/13.7A	13.7A/13.7A
MPPT Number(Strings per MPPT)	2(1+1)	2(1+1)
Output AC(Grid)		
Nominal Output Power	4000W	4600W
Max. Output Power	4000VA	4600W
Nominal AC Voltage	230V	230V
Operation Phase	Single Phase	Single Phase
Max. Input/Output Current	20A	25A
Nominal AC Frequency	50/60Hz	50/60Hz
THDi	<3%	<3%
Power Factor	-0.8 ~ +0.8 adjustable	-0.8 ~ +0.8 adjustable
UPS Output - with Battery		
UPS Max. Output Power without Solar	4000W	4000W
UPS Max. Output Power with Solar	4000W	4600W
UPS Nominal Output Voltage	230V	230V
UPS Nominal Output Frequency	50/60Hz	50/60Hz
UPS Nominal Output Current	17.4A	17.4A
Peak Power	4500W,30s	4600W
THDv	<3%@R-load	<3%@R-load
Switching Time	10ms	10ms
Efficiency		
MPPT Efficiency	99.90%	99.90%
Max. Efficiency	97.90%	97.90%
EU Efficiency	97.50%	97.50%
Battery Charging Efficiency	94.50%	94.50%
Battery Discharging Efficiency	94.50%	94.50%
Protection		
Reverse Polarity Protection	YES	YES
Anti-islanding Protection	YES	YES
AC Short-circuit Protection	YES	YES
Leakage Current Protection	YES	YES
Grid Monitoring	YES	YES
DC Switch	YES	YES
Ingress Protect Degree	IP65/NEMA4X	IP65/NEMA4X
PV Insulation Detection	YES	YES
Ground Fault Monitoring	YES	YES
Over Current Protection	YES	YES
Over Voltage Protection	YES	YES
Battery Soft Start Protection	YES	YES
SPD Protection	NO	NO
General Data		
Dimension(mm)	455Wx476(565)Hx181D	455Wx476(565)Hx181D
Weight(kg)	20kg	20kg
Display	Color LCD	Color LCD
Topology	Transformerless(Solar), HF(Battery)	Transformerless(Solar), HF(Battery)
Ambient Temperature Range	-25 ~ 60°C	-25 ~ 60°C
Standby Losses	<10W	<10W
Cooling	Natural Convection	Natural Convection
Relative Humidity Range	0 ~ 100%	0 ~ 100%
Max. Operating Altitude	2000m	2000m
Noise	<25dB	<25dB
Communication	RS485,WI-FI,Ethernet,4G	RS485,WI-FI,Ethernet,4G
Warranty	5 Years	5 Years
Standard & Certification		
EMC	EN61000-6-1, EN61000-6-2, EN61000-6-3	
Safety Standard	IEC62109-1, IEC62109-2, IEC62040	
Grid Standards	AS4777, VDE0126, VDE-AR-N4105, G83, G59, EN50438, EN50439, CE10-21, CE10-16, NRS097	

Hybrid Inverter

EU Version·Low Battery Voltage(40-60Vdc)



HYH-5K-Pro

HYH-6K-Pro

Features



Specifications

Datasheet	HYH-5K-Pro	HYH-6K-Pro
Battery Parameters		
Compatible Battery Type	Lithium-ion, Lead-acid	Lithium-ion, Lead-acid
Nominal Battery Voltage	48V/51.2V	48V/51.2V
Battery Voltage Range	40V ~ 60V	40V ~ 60V
Capacity of Battery	2~40kWh	2~40kWh
Maximum Charging/Discharging Current	80A/80A	80A/80A
Maximum Charging/Discharging Power	4000W/4000W	4000W/4000W
Max. Charging Voltage	59V	59V
Charging Curve(Lithium-ion)	3 stages	3 stages
Charging Curve(Lead-acid)	3 stages	3 stages
Depth of Discharge	80%/50%	80%/50%
Input DC (PV Side)		
Max. DC Input Power	8000W	8000W
Max. DC Input Power for Single MPPT	4000W	4000W
DC Input Voltage Range	100V ~ 550V	100V ~ 550V
Nominal DC Input Voltage	360V	360V
MPPT Operating Voltage Range	120V ~ 500V	120V ~ 500V
Full Power MPPT Voltage Range	225V~440V	225V~440V
Start-up Voltage	140V	140V
Max DC Input Current	12.5A/12.5A	12.5A/12.5A
Max DC Input Short Current	13.7A/13.7A	13.7A/13.7A
MPPT Number(Strings per MPPT)	2(1+1)	2(1+1)
Output AC(Grid)		
Nominal Output Power	5000W	6000W
Max. Output Power	5000VA	6000VA
Nominal AC Voltage	230V	230V
Operation Phase	Single Phase	Single Phase
Max. Input/Output Current	25A	26A
Nominal AC Frequency	50/60Hz	50/60Hz
THDi	<3%	<3%
Power Factor	-0.8 ~ +0.8 adjustable	-0.8 ~ +0.8 adjustable
UPS Output - with Battery		
UPS Max. Output Power without Solar	4000W	4000W
UPS Max. Output Power with Solar	5000W	5000W
UPS Nominal Output Voltage	230V	230V
UPS Nominal Output Frequency	50/60Hz	50/60Hz
UPS Nominal Output Current	17.4A	17.4A
Peak Power	5000W	5000W
THDv	<3%@R-load	<3%@R-load
Switching Time	10ms	10ms
Efficiency		
MPPT Efficiency	99.90%	99.90%
Max. Efficiency	97.90%	97.90%
EU Efficiency	97.50%	97.50%
Battery Charging Efficiency	94.50%	94.50%
Battery Discharging Efficiency	94.50%	94.50%
Protection		
Reverse Polarity Protection	YES	YES
Anti-islanding Protection	YES	YES
AC Short-circuit Protection	YES	YES
Leakage Current Protection	YES	YES
Grid Monitoring	YES	YES
DC Switch	YES	YES
Ingress Protect Degree	IP65/NEMA4X	IP65/NEMA4X
PV Insulation Detection	YES	YES
Ground Fault Monitoring	YES	YES
Over Current Protection	YES	YES
Over Voltage Protection	YES	YES
Battery Soft Start Protection	YES	YES
SPD Protection	NO	NO
General Data		
Dimension(mm)	455Wx476(565)Hx181D	455Wx476(565)Hx181D
Weight(kg)	20kg	20kg
Display	Color LCD	Color LCD
Topology	Transformerless(Solar), HF(Battery)	Transformerless(Solar), HF(Battery)
Ambient Temperature Range	-25 ~ 60°C	-25 ~ 60°C
Standby Losses	<10W	<10W
Cooling	Natural Convection	Natural Convection
Relative Humidity Range	0 ~ 100%	0 ~ 100%
Max. Operating Altitude	2000m	2000m
Noise	<25dB	<25dB
Communication	RS485,Wi-Fi,Ethernet,4G	RS485,Wi-Fi,Ethernet,4G
Warranty	5 Years	5 Years
Standard & Certification		
EMC	EN61000-6-1, EN61000-6-2, EN61000-6-3	
Safety Standard	IEC62109-1, IEC62109-2, IEC62040	
Grid Standards	AS4777, VDE0126, VDE-AR-N4105, G83, G59, EN50438, EN50439, CE10-21, CE10-16, NRS097	

Hybrid Inverter

EU Version·High Battery Voltage(90-450Vdc)



HYH-4K-Pro-HV

HYH-5K-Pro-HV

HYH-6K-Pro-HV

Features



Specifications

Datasheet	HYH-4K-Pro-HV	HYH-5K-Pro-HV	HYH-6K-Pro-HV
Battery Parameters			
Compatible Battery Type	Lithium-ion, Lead-acid	Lithium-ion, Lead-acid	Lithium-ion, Lead-acid
Nominal Battery Voltage	250V	250V	250V
Battery Voltage Range	90V ~ 450V	90V ~ 450V	90V ~ 450V
Capacity of Battery	20A/20A	20A/20A	25A/25A
Maximum Charging/Discharging Current	190A/190A	210A/210A	240A/240A
Maximum Charging/Discharging Power	4000W/4000W	5000W/5000W	6000W/6000W
Max. Charging Voltage	59V	59V	59V
Charging Curve(Lithium-ion)	3 stages	3 stages	3 stages
Charging Curve(Lead-acid)	3 stages	3 stages	3 stages
Input DC (PV Side)			
Max. DC Input Power	7000W	8000W	8000W
DC Input Voltage Range	100V ~ 550V	100V ~ 550V	100V ~ 550V
Nominal DC Input Voltage	360V	360V	360V
MPPT Operating Voltage Range	120V ~ 500V	120V ~ 500V	120V ~ 500V
Start-up Voltage	140V	140V	140V
Max DC Input Current	12.5A/12.5A	25A/12.5A	25A/12.5A
MPPT Number(Strings per MPPT)	2(1+1)	2(2+1)	2(2+1)
Output AC(Grid)			
Nominal Output Power	4000W	5000W	6000W
AC Frequency Range	45 ~ 55Hz/55 ~ 65Hz	45 ~ 55Hz/55 ~ 65Hz	45 ~ 55Hz/55 ~ 65Hz
Nominal AC Voltage	230V	230V	230V
Operation Phase	Single Phase	Single Phase	Single Phase
Nominal Output Current	17.5A	21.7A	26A
Max. Output Current	22A	27A	30A
Operational AC Voltage Range	180V ~ 270V	120V ~ 500V	120V ~ 500V
Nominal AC Frequency	50Hz/60Hz	50Hz/60Hz	50Hz/60Hz
THDi	<3%	<3%	<3%
Power Factor	-0.8 ~ +0.8 adjustable	-0.8 ~ +0.8 adjustable	-0.8 ~ +0.8 adjustable
UPS Output - with Battery			
UPS Nominal Power	4000W	5000W	6000W
Switching Time	10ms	10ms	10ms
UPS Nominal Voltage	230V	230V	230V
UPS Nominal Frequency	50/60Hz	50/60Hz	50/60Hz
UPS Nominal Current	17.5A	21.7A	26A
Peak Power	5000W/30s	6200W/30s	6900W/30s
THDv	<3%	<3%	<3%
Efficiency			
MPPT Efficiency	99.90%	99.90%	99.90%
Max. Efficiency	98.0%	98.0%	98.0%
EU Efficiency	97.50%	97.50%	97.50%
Protection			
Reverse Polarity Protection	YES	YES	YES
Anti-islanding Protection	YES	YES	YES
AC Short-circuit Protection	YES	YES	YES
Leakage Current Protection	YES	YES	YES
Grid Monitoring	YES	YES	YES
DC Switch	YES	YES	YES
Ingress Protect Degree	IP65	IP65	IP65
Ground Fault Monitoring	YES	YES	YES
Over Current Protection	YES	YES	YES
Over Voltage Protection	YES	YES	YES
General Data			
Dimension(mm)	455Wx476(565)Hx181D	455Wx476(565)Hx181D	455Wx476(565)Hx181D
Weight(kg)	20kg	20kg	20kg
Display	LCD	LCD	LCD
Topology	Transformerless(Solar), HF(Battery)	Transformerless(Solar), HF(Battery)	Transformerless(Solar), HF(Battery)
Ambient Temperature Range	-25 ~ 60°C	-25 ~ 60°C	-25 ~ 60°C
Standby Losses	<10W	<10W	<10W
Cooling	Natural Convection	Natural Convection	Natural Convection
Relative Humidity Range	0 ~ 100%	0 ~ 100%	0 ~ 100%
Max. Operating Altitude	2000m	2000m	2000m
Noise	<50dB	<50dB	<50dB
Communication	RS485,WI-FI,4G	RS485,WI-FI,4G	RS485,WI-FI,4G
Standard & Certification			
IEC62109-1-2, IEC62040,EN61000-6-1,EN61000-6-2,EN61000-6-3			

AC-Coupled Energy Storage Inverter

Low Battery Voltage(40-60Vdc)



HYH-3K-AC

HYH-3.6K-AC

HYH-5K-AC

Features



Specifications

Datasheet	HYH-3K-AC	HYH-3.6K-AC	HYH-5K-AC
Battery Parameters			
Compatible Battery Type	Lithium-ion, Lead-acid	Lithium-ion, Lead-acid	Lithium-ion, Lead-acid
Nominal Battery Voltage	48V	48V	48V
Battery Voltage Range	40V ~ 60V	40V ~ 60V	40V ~ 60V
Capacity of Battery	2 ~ 20KWh	2 ~ 20KWh	2 ~ 20KWh
Maximum Charging/Discharging Current	66A/66A	70A/70A	80A/80A
Maximum Charging/Discharging Power	3000W/3000W	3600W/3600W	4000W/4000W
Max. Charging Voltage	59V	≤60V	59V
Charging Curve(Lithium-ion)	3 stages	3 stages	3 stages
Charging Curve(Lead-acid)	3 stages	3 stages	3 stages
Depth of Discharge(Lithium-ion/Lead-acid)	80%/50%	80%/50%	80%/50%
Battery Back Feed Current	80%/50%	80%/50%	80%/50%

AC Input/Output			
Nominal Output Power	3000W	3600W	5000W
Max. Output Power	3000VA	3600VA	5000VA
Max. Input Power	3000VA	5980VA	5980VA
Nominal AC Voltage	230V	220/230V	230V
AC Voltage Range	230V	180~270V	230V
Operation Phase	Single Phase	Single Phase	Single Phase
Max. Input/Output Current	26A/16A	26A/16A	26A/16A
Nominal AC Frequency	50Hz/60Hz	50Hz/60Hz	50Hz/60Hz
AC Over Current Protection		31A	
THDi	<3%		<3%
Power Factor	-0.8 ~ +0.8 adjustable	-0.8 ~ +0.8 adjustable	-0.8 ~ +0.8 adjustable
AC Over Voltage Category	Category III	Category III	Category III

UPS Output - with Battery			
UPS Max. Output Power without Solar	3000W	3600W	4000W
UPS Max. Output Power with Solar	3000W	3600W	4000W
UPS Nominal Output Voltage	230V	230V	230V
UPS Nominal Output Frequency	50/60Hz	50/60Hz	50/60Hz
UPS Nominal Output Current	13A	15.6A	17.4A
Peak Power	4500W,30s	4500W,30s	4500W,30s
THDv	<3%@Linear load	<3%@Linear load	<3%@Linear load
Switching Time	10ms	10ms	10ms
Back-up Over Current Protection	31A	31A	31A

Efficiency			
MPPT Efficiency	99.90%	99.90%	99.90%
Max. Efficiency	97.90%	97.90%	97.90%
EU Efficiency	97.50%	97.50%	97.50%
Battery Charging Efficiency	94.50%	94.50%	94.50%
Battery Discharging Efficiency	94.50%	94.50%	94.50%

Protection			
Reverse Polarity Protection	YES	YES	YES
Anti-islanding Protection	YES	YES	YES
AC Short-circuit Protection	YES	YES	YES
Leakage Current Protection	YES	YES	YES
Grid Monitoring	YES	YES	YES
DC Switch	YES	YES	YES
Ingress Protect Degree	IP65	IP65	IP65
PV Insulation Detection	YES	YES	YES
Ground Fault Monitoring	YES	YES	YES
Over Current Protection	YES	YES	YES
Over Voltage Protection	YES	YES	YES
Battery Soft Start Protection	YES	YES	YES
SPD Protection	NO	NO	NO

General Data			
Dimension(mm)	324Wx565Hx171D	324Wx565Hx171D	324Wx565Hx171D
Weight(kg)	15.6kg	15.6kg	15.6kg
Display	Color LCD	Color LCD	Color LCD
Topology	Transformerless(Solar), HF(Battery)	Transformerless(Solar), HF(Battery)	Transformerless(Solar), HF(Battery)
Ambient Temperature Range	-25 ~ 60°C	-25 ~ 60°C	-25 ~ 60°C
Standby Losses	<5W	<5W	<5W
Cooling	Natural Convection	Natural Convection	Natural Convection
Relative Humidity Range	0 ~ 100%	0 ~ 100%	0 ~ 100%
Max. Operating Altitude	2000m	2000m	2000m
Noise	<25dB	<25dB	<25dB
Communication	RS485,Wi-Fi,Ethernet,4G	RS485,Wi-Fi,Ethernet,4G	RS485,Wi-Fi,Ethernet,4G
Warranty	5 Years	5 Years	5 Years

Standard & Certification	
EMC	EN61000-6-3
Grid Standards	G83, G100, CE, SAA

Off-Grid Inverter



HYL-3000

HYL-4000

HYL-5000

Features

- Max. Efficiency 98%
- 2 MPPT
- Six Time of Use Setting
- Support Generator Connection
- RS485/CAN
- Support Multiple Parallel
- Internal SPD
- High Surge Endurance
- Zero Export
- IP65 Ingress Protection
- AC Coupled
- High Power Factor

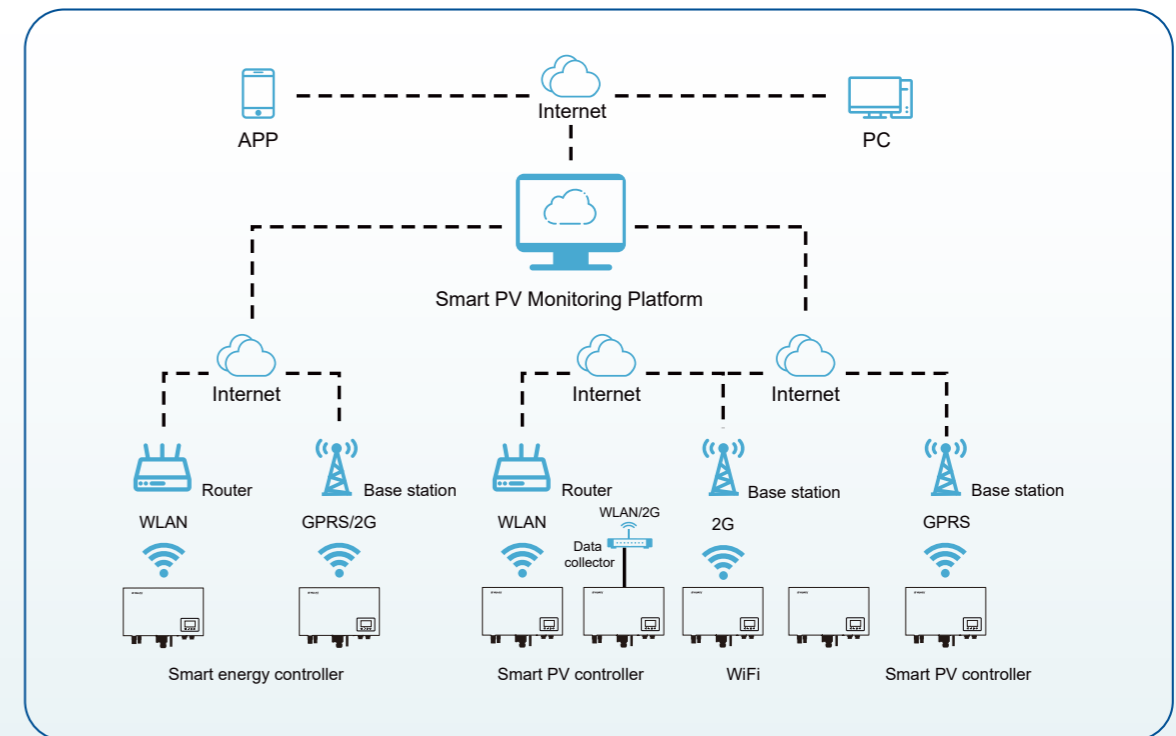
Specifications

Datasheet	HYL-3000	HYL-4000	HYL-5000
Output Data			
Rated Power	3000W/3000VA	4000W/4000VA	5000W/5000VA
Parallel Capacity	YES	YES	YES
Normal Output Voltage	230/240, Split Phase 220/110V	230/240, Split Phase 220/110V	230/240, Split Phase 220/110V
Normal Output Frequency	50Hz/60Hz	50Hz/60Hz	50Hz/60Hz
Surge Power	6000VA	8000VA	10000VA
Switch Time	10ms	10ms	10ms
Waveform	Pure Sine Wave	Pure Sine Wave	Pure Sine Wave
Battery Data			
Battery Type	Lithium/Lead-Acid	Lithium/Lead-Acid	Lithium/Lead-Acid
Normal Voltage	51.2V/48V	51.2V/48V	51.2V/48V
Max. Charge Voltage	59V	59V	59V
Solar Charger Data			
Max. Recommended PV Power	6000W	6000W	6000W
MPPT Tracker	2	2	2
Max. PV Open Circuit Voltage	480Vdc	480Vdc	480Vdc
MPPT Voltage Range	100V~385V dc	100V~385V dc	100V~385V dc
Max. Solar Charge Current(Battery side)	100A	100A	100A
Max. MPPT Efficiency	>98%	>98%	>98%
Parallel MPPT Charger	YES	YES	YES
AC Charger Data			
Normal Voltage	230V ac	230V ac	230V ac
AC Voltage Range	110V~280V ac	110V~280V ac	110V~280V ac
Max. Charge Current(Battery side)	60A	60A	60A
Frequency Range	50/60Hz	50/60Hz	50/60Hz
General Data			
Dimension(mm)	504Wx330Hx135D	504Wx330Hx135D	504Wx330Hx135D
Weight(kg)	14Kg	14Kg	14Kg
Operating Temperature	0~50 C	0~50 C	0~50 C
Relative Humidity Range	5%~95% (Non-condensing)	5%~95% (Non-condensing)	5%~95% (Non-condensing)
Protection Degree	IP20	IP20	IP20
Storage Temperature	-15~60 C	-15~60 C	-15~60 C
Standard & Certification			
Display	LCD+LED	LCD+LED	LCD+LED
Lithium Battery Communication	CAN/RS485	CAN/RS485	CAN/RS485
RS485/Dry Connector	YES/YES	YES/YES	YES/YES
Wifi/GPRS/Ethernet	YES/YES/YES	YES/YES/YES	YES/YES/YES
Warranty	2 Years	2 Years	2 Years

Huayu Monitoring Data Logger HY-SDL



Huayu Portal Monitoring Platform



Huayu Portal Monitoring Platform provides visibility for all Huayu energy storage solar systems installed with full range of Huayu battery-based inverters. This smart monitoring platform can display the energy production from PV arrays, the home's energy usage and the energy drawn from the utility and is featured with free usage, flexible configuration and user friendly access.

Overview

Huayu Data Logger is a WiFi module which is used to collect and store real-time and historical data from battery-based inverters in a solar energy storage system and deliver remote updates back to them through a PC or a smart device.

Features

Plug & Play

Simple and fast Plug & Play installation to save installation time.

Easy-to-use

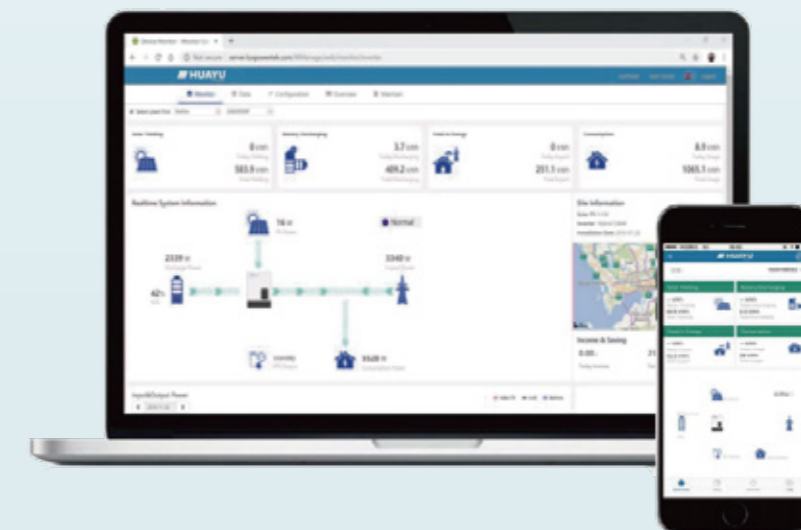
Easy system setting, monitoring and updates through "Huayu Portal" App.

Safety

Available for a variety of wireless network encryptions to ensure safe data transmission.

Powerful

Powerful on-board processing and storage capability.



Huayu Portal - Web Application

Login Demo Station of Huayu Portal Web Monitoring Platform for more details: <http://www.huayuportal.com/login>

Huayu Portal - Mobile App

Download "Huayu Portal" at the App Store or Google Play Store to see the Demo Station for more details:

Lithium Battery

Battery Module



HYB-4850M

The Huayu battery module HYB-4850M(2.4kWh of usable storage capacity) is a LiFePO4 chemistry based solution used for energy storage, backup power, peak load shaving and other similar systems with daily cycling. The modular design is featured with compact size and light weight for easy installation and equipped with independent BMS(Battery Management System) to manage battery system more effectively in a battery pack combined with multiple battery modules.

More Powerful

- Up to 40 modules(96kWh) for extension of parallel capacity

More Reliable

- 6000+ cycles, 20-year lifespan design
- 10-year standard warranty

Smarter

- Each module is equipped with an independent BMS system
- Modular design for flexible combination of power capacity

Safer

- Safe LiFePO4 chemistry(lithium iron phosphate) battery cell
- Natural cooling with optional heat/fan configuration

Easier

- Modular design with compact size(480*360*90mm) and light weight (22kg only)
- Lifting handles designed for easier installation and quick stacking

Specifications

Model	HYB-4850M
Battery Type	LiFePO4
Nominal Battery Energy	2.4kWh
Nominal Capacity	50Ah
Nominal Voltage	48V
Charging Cut-off vol.	54V
Discharging End-off vol.	40.5V
Recommend C Rate	0.5C
Net Weight	22Kg
Dimension(W x D x H)	480x360x90mm
Charging Temp. Range	0~50°C
Discharging Temp. Range	-20~50°C
Calendar Life ^[1]	6000 Cycles
Protection Level	IP20
Communication	CAN / RS485 / DRY CONTACT
Certification & Safety Standard	TU/CE/EN62619/IEC62040/UN38.3/CEC Accredited
Warranty	10 Years

[1] Test conditions: 0.2C Charging/Discharging, @25°C, 80% Dod

Lithium Battery

Battery Module



HYB-4875M

The Huayu battery module HYB-4875M(3.6kWh of usable storage capacity) is a LiFePO4 chemistry based solution used for energy storage, backup power, peak load shaving and other similar systems with daily cycling. The modular design is featured with compact size and light weight for easy installation and equipped with independent BMS(Battery Management System) to manage battery system more effectively in a battery pack combined with multiple battery modules.

More Powerful

- Up to 40 modules(144kWh) for extension of parallel capacity

More Reliable

- 6000+ cycles, 20-year lifespan design
- 10-year standard warranty

Smarter

- Each module is equipped with an independent BMS system
- Modular design for flexible combination of power capacity

Safer

- Safe LiFePO4 chemistry(lithium iron phosphate) battery cell
- Natural cooling with optional heat/fan configuration

Easier

- Modular design with compact size(400*360*133.5mm) and light weight(30kg only)
- Lifting handles designed for easier installation and quick stacking

Specifications

Model	HYB-4875M
Nominal Battery Energy	3.6kWh
Nominal Capacity	75Ah
Nominal Voltage	48V
Max. Continuous Discharge Current	50A
Max. Continuous Charge Current	50A
Charging Cut-Off Vol.	54V
Discharging End-Off Vol.	40.5V
Net Weight	30Kg
Dimension(WxDxH)	400x360x133.5mm
Charging Temp. Range	0~50°C
Discharging Temp. Range	-20~50°C
Calendar Life ^[1]	6000 Cycles
Protection Level	IP20
Communication	CAN / RS485
Recommend C Rate	0.5C
Warranty	10 Years

[1] Test conditions: 0.2C Charging/Discharging, @25°C, 80% Dod

Lithium Battery

Power Bank



More Powerful

- Up to 4 power banks(9.6kWh) for extension of parallel capacity

More Reliable

- 6000+ cycles, 20-year lifespan design
- 10-year standard warranty

Smarter

- Each bank is equipped with an independent BMS system
- Modular design for flexible combination of power capacity

Safer

- Safe LiFePO4 chemistry(lithium iron phosphate) battery cell
- IP65 enclosure protection and DC breaker embedded
- Natural cooling with optional heat/fan configuration

Easier

- Modular design with compact size(928*555*210mm) and light weight (47kg only)
- Lifting handles designed for easier installation and quick stacking
- Easy installation on the wall or floor

HYB-4850B

The Huayu power bank HYB-4850B(2.4kWh of usable storage capacity) is a LiFePO4 chemistry based solution used for energy storage, backup power, peak load shaving and other similar systems with daily cycling. The modular design is featured with compact size and light weight for easy installation and equipped with independent BMS(Battery Management System) to manage battery system more effectively in a battery pack combined with multiple power banks.

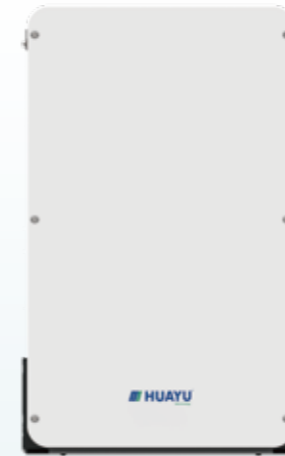
Specifications

Datasheet	Power Bank
Battery Type	LiFePO4
Battery Model	HYB-4850B (1 Module)
Battery Capacity(Ah)	50
Nominal Battery Energy(kWh)	2.4
Max Output Power(kW)	2.4
Net Weight(Kg)	47
Dimension(HxWxD,mm)	928x555x210
Working Voltage(V)	40.4~54
Operating Temp. Range(°C)	-20~50
Calendar Life(Cycles) [1]	6000
Nominal Voltage(V)	48
Protection Level	IP65
Communication	CAN / RS485 / DRY CONTACT
Certification & Safety Standard	TUV/CE/EN62619/IEC620460/UN38.3/CEC Accredited
Scalability(kWh)	Up to 4 units to parallel
Compatible Inverters	Goodwe Victron Imeon Solis Luxpower Growatt GMDE Sofar Voltronic Deye More brands will be announced
Warranty	10 Years
Warranty Document Supplied	Yes
Color	White
Alarms	Overcharge Overdischarge Overcurrent Overtemperature Short Circuit
Nominal Voltage(V)	Can be used in both off-grid and hybrid setups, compact design, modular expansion
Protection Level	Each module has BMS, breaker embedded in system

[1] Test conditions: 0.2C Charging/Discharging, @25°C, 80% DOD

Lithium Battery

Power Bank



More Powerful

- Up to 4 power banks(19.2kWh) for extension of parallel capacity

More Reliable

- 6000+ cycles, 20-year lifespan design
- 10-year standard warranty

Smarter

- Each bank is equipped with an independent BMS system
- Modular design for flexible combination of power capacity

Safer

- Safe LiFePO4 chemistry(lithium iron phosphate) battery cell
- IP65 enclosure protection and DC breaker embedded
- Natural cooling with optional heat/fan configuration

Easier

- Modular design with compact size(928*555*210mm) and light weight (69kg only)
- Lifting handles designed for easier installation and quick stacking
- Easy installation on the wall or floor

HYB-48100B

The Huayu power bank HYB-48100B(4.8kWh of usable storage capacity) is a LiFePO4 chemistry based solution used for energy storage, backup power, peak load shaving and other similar systems with daily cycling. The modular design is featured with compact size and light weight for easy installation and equipped with independent BMS(Battery Management System) to manage battery system more effectively in a battery pack combined with multiple power banks.

Specifications

Datasheet	Power Bank
Battery Type	LiFePO4
Battery Model	HYB-48100B (2 Modules)
Battery Capacity(Ah)	100
Nominal Battery Energy(kWh)	4.8
Max Output Power(kW)	4.8
Net Weight(Kg)	69
Dimension(HxWxD,mm)	928x555x210
Working Voltage(V)	40.4~54
Operating Temp. Range(°C)	-20~50
Calendar Life(Cycles) [1]	6000
Nominal Voltage(V)	48
Protection Level	IP65
Communication	CAN / RS485 / DRY CONTACT
Certification & Safety Standard	TUV/CE/EN62619/IEC620460/UN38.3/CEC Accredited
Scalability(kWh)	Up to 4 units to parallel
Compatible Inverters	Goodwe Victron Imeon Solis Luxpower Growatt GMDE Sofar Voltronic Deye More brands will be announced
Warranty	10 Years
Warranty Document Supplied	Yes
Color	White
Alarms	Overcharge Overdischarge Overcurrent Overtemperature Short Circuit
Nominal Voltage(V)	Can be used in both off-grid and hybrid setups, compact design, modular expansion
Protection Level	Each module has BMS, breaker embedded in system

[1] Test conditions: 0.2C Charging/Discharging, @25°C, 80% DOD

Lithium Battery

Power Bank



More Powerful

- Up to 4 power banks(28.8kWh) for extension of parallel capacity

More Reliable

- 6000+ cycles, 20-year lifespan design
- 10-year standard warranty

Smarter

- Each bank is equipped with an independent BMS system
- Modular design for flexible combination of power capacity

Safer

- Safe LiFePO4 chemistry(lithium iron phosphate) battery cell
- IP65 enclosure protection and DC breaker embedded
- Natural cooling with optional heat/fan configuration

Easier

- Modular design with compact size(928*555*210mm) and light weight (91kg only)
- Lifting handles designed for easier installation and quick stacking
- Easy installation on the wall or floor

HYB-48150B

The Huayu power bank HYB-48150B(7.2kWh of usable storage capacity) is a LiFePO4 chemistry based solution used for energy storage, backup power, peak load shaving and other similar systems with daily cycling. The modular design is featured with compact size and light weight for easy installation and equipped with independent BMS(Battery Management System) to manage battery system more effectively in a battery pack combined with multiple power banks.

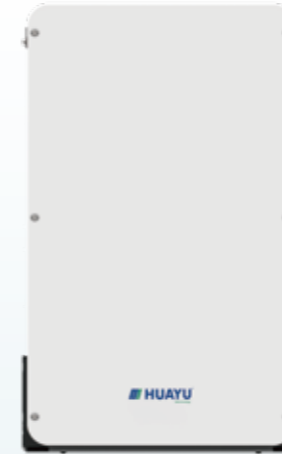
Specifications

Datasheet	Power Bank
Battery Type	LiFePO4
Battery Model	HYB-48150B (3 Modules)
Battery Capacity(Ah)	150
Nominal Battery Energy(kWh)	7.2
Max Output Power(kW)	4.8
Net Weight(Kg)	91
Dimension(HxWxD,mm)	928x555x210
Working Voltage(V)	40.4~54
Operating Temp. Range(°C)	-20~50
Calendar Life(Cycles) [1]	6000
Nominal Voltage(V)	48
Protection Level	IP65
Communication	CAN / RS485 / DRY CONTACT
Certification & Safety Standard	TUV/CE/EN62619/IEC620460/UN38.3/CEC Accredited
Scalability(kWh)	Up to 3 units to parallel
Compatible Inverters	Goodwe Victron Imeon Solis Luxpower Growatt GMDE Sofar Voltronic Deye More brands will be announced
Warranty	10 Years
Warranty Document Supplied	Yes
Color	White
Alarms	Overcharge Overdischarge Overcurrent Overtemperature Short Circuit
Nominal Voltage(V)	Can be used in both off-grid and hybrid setups, compact design, modular expansion
Protection Level	Each module has BMS, breaker embedded in system

[1] Test conditions: 0.2C Charging/Discharging, @25°C, 80% DOD

Lithium Battery

Power Bank



More Powerful

- Up to 4 power banks(38.4kWh)for extension of parallel capacity

More Reliable

- 6000+ cycles, 20-year lifespan design
- 10-year standard warranty

Smarter

- Each bank is equipped with an independent BMS system
- Modular design for flexible combination of power capacity

Safer

- Safe LiFePO4 chemistry(lithium iron phosphate)battery cell
- IP65 enclosure protection and DC breaker embedded
- Natural cooling with optional heat/fan configuration

Easier

- Modular design with compact size(928*555*210mm) and light weight (113kg only)
- Lifting handles designed for easier installation and quick stacking
- Easy installation on the wall or floor

HYB-48200B

The Huayu power bank HYB-48200B(9.6kWh of usable storage capacity) is a LiFePO4 chemistry based solution used for energy storage, backup power, peak load shaving and other similar systems with daily cycling. The modular design is featured with compact size and light weight for easy installation and equipped with independent BMS(Battery Management System) to manage battery system more effectively in a battery pack combined with multiple power banks.

Specifications

Datasheet	Power Bank
Battery Type	LiFePO4
Battery Model	HYB-48200B (4 Modules)
Battery Capacity(Ah)	200
Nominal Battery Energy(kWh)	9.6
Max Output Power(kW)	4.8
Net Weight(Kg)	113
Dimension(HxWxD,mm)	928x555x210
Working Voltage(V)	40.4~54
Operating Temp. Range(°C)	-20~50
Calendar Life(Cycles) [1]	6000
Nominal Voltage(V)	48
Protection Level	IP65
Communication	CAN / RS485 / DRY CONTACT
Certification & Safety Standard	TUV/CE/EN62619/IEC620460/UN38.3/CEC Accredited
Scalability(kWh)	Up to 3 units to parallel
Compatible Inverters	Goodwe Victron Imeon Solis Luxpower Growatt GMDE Sofar Voltronic Deye More brands will be announced
Warranty	10 Years
Warranty Document Supplied	Yes
Color	White
Alarms	Overcharge Overdischarge Overcurrent Overtemperature Short Circuit
Nominal Voltage(V)	Can be used in both off-grid and hybrid setups, compact design, modular expansion
Protection Level	Each module has BMS, breaker embedded in system

[1] Test conditions: 0.2C Charging/Discharging, @25°C, 80% DOD