

48V LiFePO4 Rack Mount Series

Product features:

Larger capacity supply equipment cabinet

No active cooling system is required

High operational reliability

They live for more than 10 years at +25°C

Optimal management

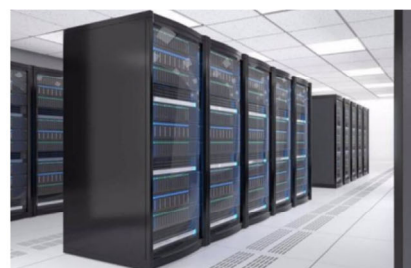
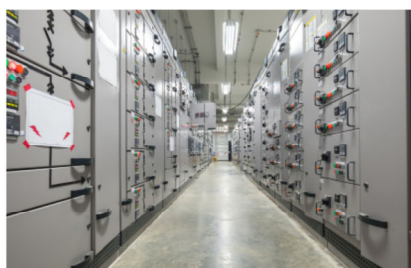
In line with the RoHS

Applicable field:

- Oil and electricity hybrid energy storage system
- Grid frequency adjustment energy storage system
- New energy communication base station, Core computer room, IDC ,UPS
- New energy generation (solar, wind, PV/wind hybrid) access to energy storage system
- Smart grid, micro-grid system
- Mobile container storage system
- Other energy Storage System
- Peak load shifting energy storage system
- Load tracking energy storage system



Application scenarios



Product parameters

	MODEL	GE4850LR	GE4880LR	GE48100LR	GE48120LR	GE48150LR	GE48200LR
Electrical Characteristics	Rate voltage(Vdc)	48	48	48	48	48	48
	Rate capacity(AH)	50	80	100	120	150	200
	Energy storage(KWH)	2.4	3.84	4.8	5.76	7.2	9.6
	Cycle life	≥4000 cycles to 85% DOD					
	Months self discharge	≤2%					
	Efficiency of charge	100% at 0.2C					
	Efficiency of discharge	96-99% at 1C					
	Charge voltage	54.8					
Standard Charge	Charge mode	0.2C to 54.8V, then 54.8V,charge current to 0.02C (CC/CV)					
	Charge current(A)	10	16	20	24	30	40
	Max. Charge current(A)	50	80	100	120	120	120
Standard Discharge	Charge cut-off voltage(VDC)	54.8					
	Continuous current(A)	50	80	100	120	120	120
Environmental	Discharge cut-off voltage(VDC)	42					
	Charge temperature	0 °C to 45 °C (32F to 113F) @60±25% Relative Humidity					
	Discharge temperature	-20 °C to 60 °C (-4F to 140F) @60±25% Relative Humidity					
	Storage temperature	0 °C to 40 °C (32F to 104F) @60±25% Relative Humidity					
	IP class	IP60					
	Material system	LiFePO4					
	Case material	Metal					
Mechanical	Case Type	Rack/Wall Mount					
	Pack Dimensions L*W*H(mm)	451*450(492)*177	465*440(482)*191	490*440(482)*177	470*390*155	500*440(482)*260	590*375*245
	Package Dimension L*W*H(mm)	545*525*255	560*515*265	585*515*345	610*490*255	575*515*335	680*470*350
	Net Weight(kg)	37.2	39.9	41.6	39	76.2	78.8
	Gross Weight(kg)	40.4	41.1	45.4	42.2	79.6	81.5
	Terminal	M8					
	Protocol(Optional)	CANBus/RS485/RS232					
	SOC (Optional)	LED/LCD					