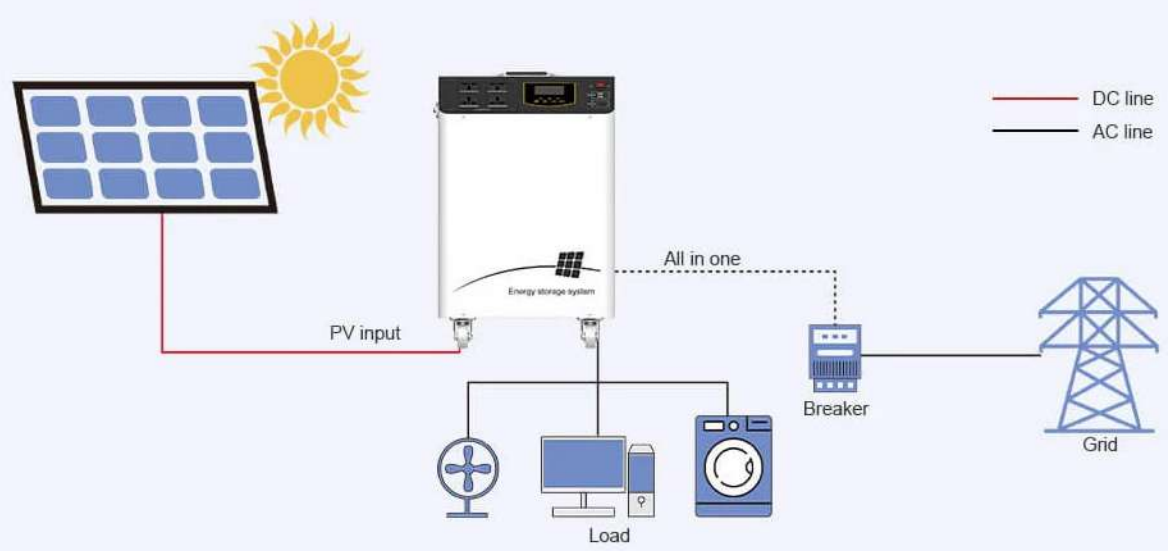
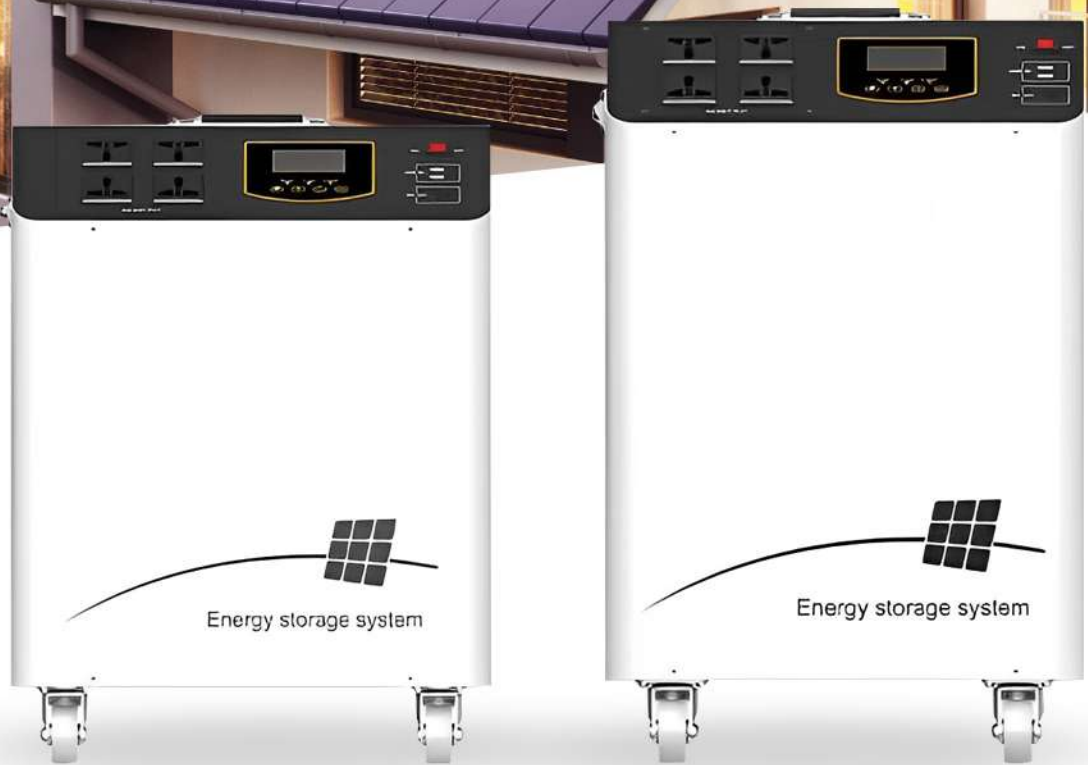


# ALL IN-ONE ENERGY STORAGE SOLAR SYSTEM



## SPECIFICATIONS

Model										
Inverter	Rated power	1000W			2000W			3000W		
	Output voltage waveform	Pure sine wave								
	Output voltage regulation	230Vac±5%								
	Output frequency	50Hz/60Hz(±0.2Hz)								
	Peak efficiency	90%								
	Nominal DC input voltage	12Vdc(±0.3)			24Vdc(±0.3)			24Vdc(±0.3)		
	Standby Consumption	<25w								
PV Input	Max solar power input	900W			1800W			1800W		
	PV max charging current	60A(±3A)			60A(±3A)			60A(±3A)		
	Combined charging current	70A(±4A)			70A(±4A)			70A(±4A)		
	Max efficiency	98.0% max								
	PV array open circuit voltage	105VDC			145VDC			145VDC		
	PV Array MPPT Voltage Range	15-105VDC			30-120VDC			30-120VDC		
AC Input	AC input voltage	230Vac ± 5%								
	Acceptable input voltage range	90-280VAC								
	Nominal input frequency	50HZ / 60HZ ( Auto detection )								
	Transfer time	10ms typical ( UPS , VDE ) ; 20ms typical ( APL )								
AC Charge	Charging current @ nominal input voltage	10A/20A(±4A)			20A/30A(±4A)			20A/30A(±4A)		
	Charging Algorithm	4-step ( Li )								
Output	AC output	230Vac								
	USB ( 5V 2.4A )	DC output* 2pcs								
	USB ( 12V 1A )	DC output*1pcs								
Lithium Battery	Energy	960Wh	1280Wh	1532Wh	2560Wh	6400Wh	2560Wh	3840Wh	6400Wh	
	Nominal voltage	12.8V			25.6V			25.6V		
	Standard charging&discharge current	50A			50A	50A	100A	50A	50A	100A
	Maximum continuous charging& discharge current	100A			100A	100A	200A	100A	100A	200A
	Operation Chtemperature	Charge		0~45°C						
	Discharge		-10~60°C							
Dimension	Product Sue ( LxWxH ) ( mm )	379*254*498.5			379*254*498.5			351*300*538.5		
	Packing Size ( LxWxH ) ( mm )	467*342*670			467*342*670			439*388*690		
	Net Weight ( kg )	/	24	31	/	/	/	39.5	/	
	Gross Weight ( kg )	/	35	42	/	/	/	55	/	