

## UP-SG2000-2



Specification		
Nominal Voltage	2V	
Nominal Capacity (10HR)	2000.0AH	
Dimension	Length	490±3mm (19.29 inches)
	Width	350±3mm (13.78 inches)
	Container Height	339±3mm (13.35 inches)
	Total Height (with Terminal)	349±3mm (13.74 inches)
Approx Weight	Approx 126.5kg (278.9lbs)	
Terminal	T11	
Container Material	ABS	
Rated Capacity	2133.4AH/106.67A	(20hr, 1.80V/cell, 25°C/77°F)
	2000.0AH/200.00A	(10hr, 1.75V/cell, 25°C/77°F)
	1720.0AH/344.0A	(5hr, 1.75V/cell, 25°C/77°F)
	1496.1AH/498.7A	(3hr, 1.75V/cell, 25°C/77°F)
	1173.0AH/1173.0A	(1hr, 1.67V/cell, 25°C/77°F)
Max. Discharge Current	14000A (5s)	
Internal Resistance	Approx 0.34mΩ	
Operating Temperature Range	Discharge: -20~55°C (-4~131°F)	
	Charge : 0~40°C (32~104°F)	
	Storage : -20~50°C (-4~122°F)	
Nominal Operating Temperature Range	25±3°C (77±5°F)	
Cycle Use	Initial Charging Current less than 400.0A.Voltage. 2.4V~2.5V at 25°C(77°F)Temp. Coefficient -5mV/°C	
Standby Use	No limit on Initial Charging Current Voltage. 2.25V~2.3V at 25°C(77°F)Temp. Coefficient -3mV/°C	
Capacity affected by Temperature	40°C (104°F) 103%	
	25°C (77°F) 100%	
	0°C (32°F) 86%	
Self Discharge	Batteries may be stored for up to 9 months at 25°C (77°F) and then a freshening charge is required.	

Constant Current Discharge (Amperes) at 25°C (77°F)														
F.V/Time	20min	30min	45min	1h	2h	3h	4h	5h	6h	7h	8h	9h	10h	20h
1.85V/cell	1740.0	1368.0	1042.7	906.0	578.0	440.7	365.0	315.2	272.0	240.9	217.3	198.4	187.8	102.4
1.80V/cell	/	1528.0	1152.0	1000.0	626.0	472.0	387.0	331.2	285.7	252.0	227.8	208.9	196.2	106.67
1.75V/cell	/	1680.0	1242.7	1068.0	663.0	498.7	405.5	344.0	295.7	261.1	235.0	215.1	200.0	108.8
1.70V/cell	/	1800.0	1320.0	1132.0	703.0	519.3	418.5	354.4	306.0	269.7	242.0	220.7	204.8	110.3
1.67V/cell	/	1872.0	1368.0	1173.0	721.0	536.0	429.0	362.0	311.0	273.7	245.5	223.8	207.2	111.3
1.60V/cell	/	/	1469.3	1246.0	750.0	557.3	445.0	373.2	318.7	279.4	250.0	228.4	211.2	112.9

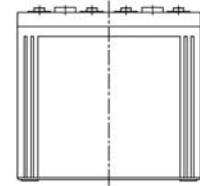
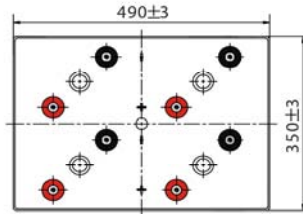
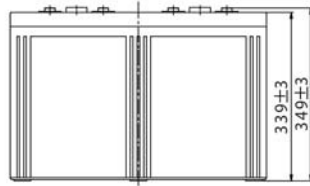
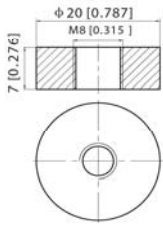
Constant Power Discharge (Watts) at 25°C (77°F)														
F.V/Time	20min	30min	45min	1h	2h	3h	4h	5h	6h	7h	8h	9h	10h	20h
1.85V/cell	3304.3	2615.6	2006.1	1750.4	1120.7	856.7	712.5	617.5	534.8	474.7	429.1	392.3	371.7	202.9
1.80V/cell	/	2894.0	2195.7	1922.0	1207.6	914.3	752.3	646.5	559.6	494.9	448.4	411.9	387.5	211.0
1.75V/cell	/	3146.6	2347.4	2042.0	1275.6	963.9	785.9	668.4	577.1	511.6	461.8	423.8	394.6	215.0
1.70V/cell	/	3348.0	2484.2	2156.5	1346.2	1000.8	809.0	687.2	596.4	527.6	474.8	434.3	403.7	217.7
1.67V/cell	/	3435.1	2551.3	2217.0	1373.5	1028.6	826.7	699.4	604.3	533.7	480.4	439.3	407.8	219.5
1.60V/cell	/	/	2725.6	2342.5	1422.0	1064.5	854.8	718.8	617.3	543.5	488.3	447.8	415.0	222.3



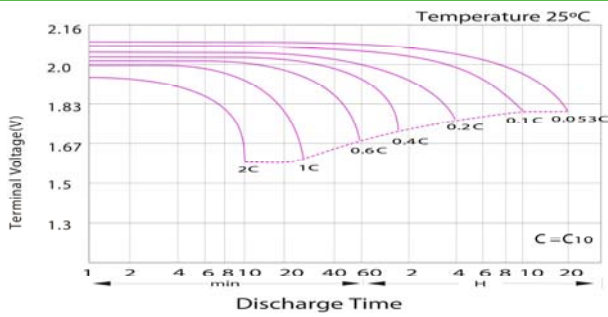
**UP-SG2000-2**

**Dimensions**

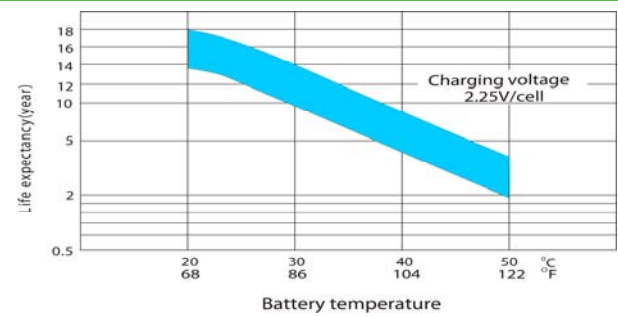
**T11 Terminal**  
Unit: mm [inches]



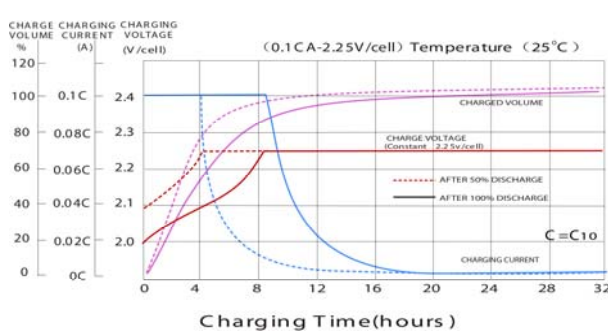
**Discharge Characteristics**



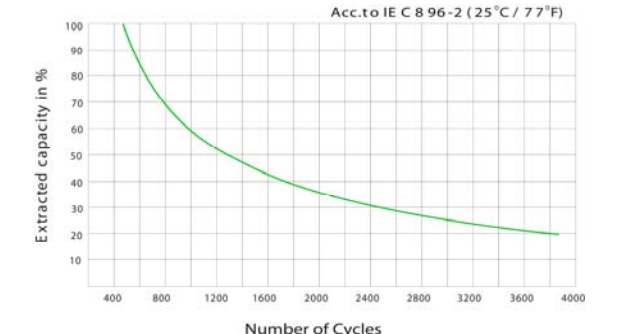
**Effect of Temperature on Long Term Float Life**



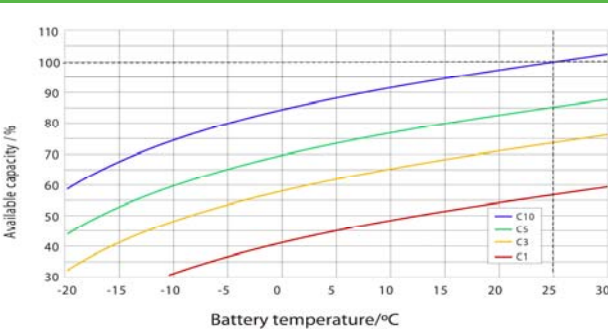
**Float Charging Characteristics**



**Cycle Life in Relation to Depth of Discharge**



**Temperature Effects in Relation to Battery Capacity**



**General Relation of Capacity VS. Storage Time**

