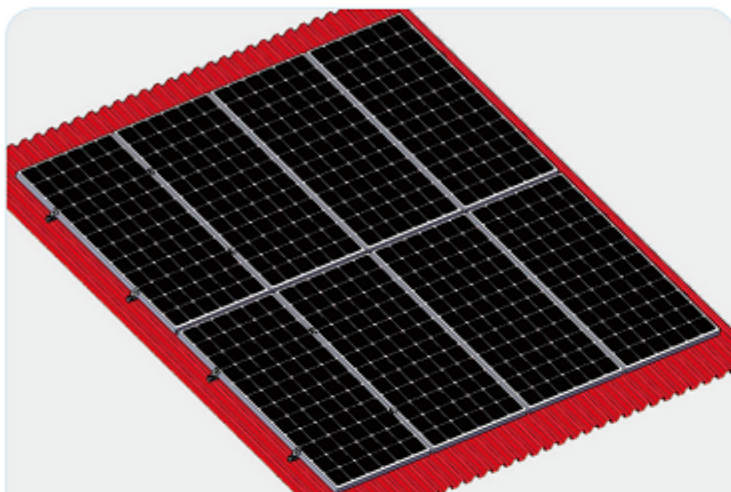




彩钢瓦屋顶支架 (U型导轨)



本系统由以下零部件组成/This system consists of the following components:



产品说明/DESCRIPTION:

- 安装位置/Installation place: 彩钢瓦屋面/Caigang watts roof
- 斜面支架组件/Module slop: 根据实际需求/According to the practical demand
- 拉拔力/Drawing force: 1000N
- 风力承载能力/Wind load: 40m/s、32.5kg/m²、13级
- 雪载承受力/Snow load: 70kg/m²
- 支架类型/Module type 框架/Frame
- 材料/Material: 铝型材/Aluminium profile
- 颜色/Colour: 本色/Natural
- 使用年限/Warranty time: 25 years.

优势/ADVANTAGES:

1. 美观/Good Appearance.
2. 简便易安装/Easy and flexible Installation.
3. 多样化设计/Diversified Application.
4. 重量轻/Light dead-weight.
5. 节省安装材料/The mounting system materials are saved.

工程实例照片



1 第一步/First step

With a self tapping screw U guide rail is fixed on the caigang watts, the diagram below:

用自攻螺钉将U型导轨固定在彩钢瓦上, 如下图:

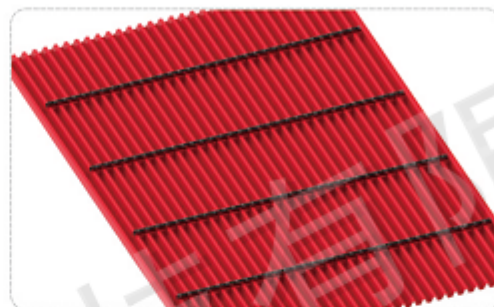


Figure 1 (a)

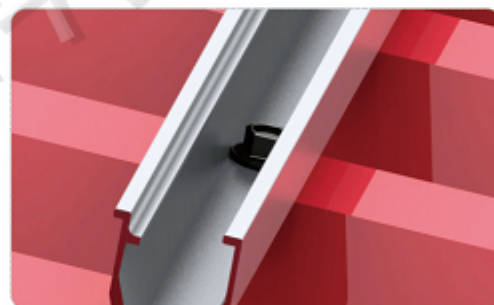


Figure 1 (b)

2 第二步/Second step

The component with pressure and inner hexagon bolt on the u-shaped guideway. The diagram below:

将组件用压块及内六角螺栓固定在U型导轨上, 如下图:

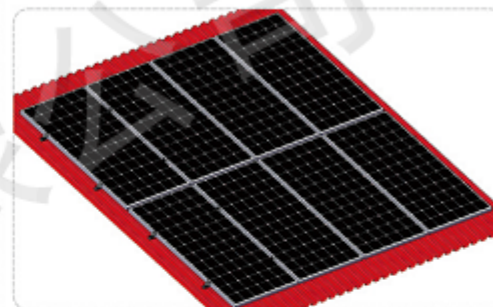


Figure 2 (a)



Figure 2 (b)

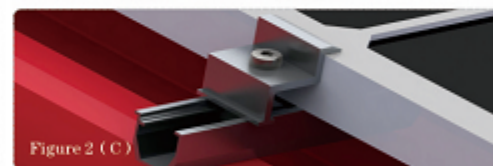


Figure 2 (c)

工程实例照片

