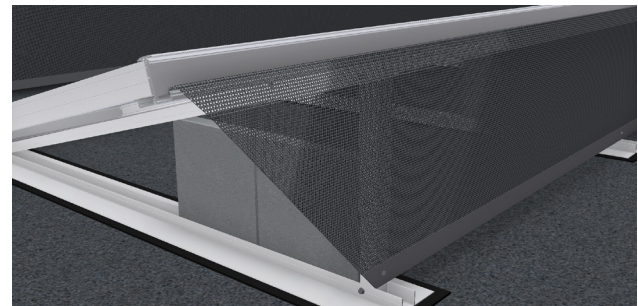
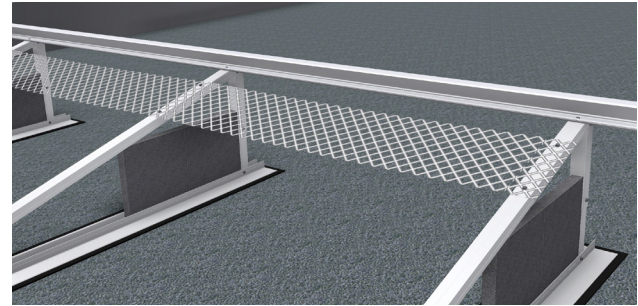
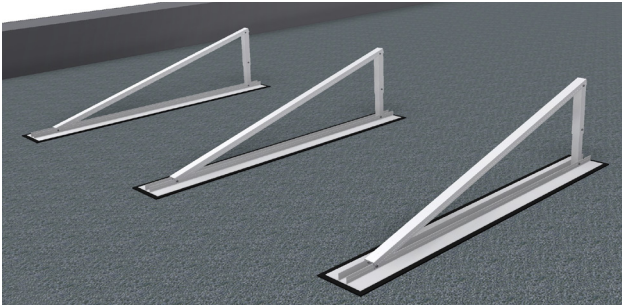


**10**  
YEARS  
GUARANTEE



## SOL-50 FLAT ROOF MOUNTING SYSTEM



### SOLOFLEX

SOL-50 flat roof mounting system was specially developed for installations on large hall roofs with low payloads. The console angle is adjustable and the components are delivered mainly pre-assembled. Cable protection nets for safe cable laying as well as the use of corrosion resistant materials guarantee the proper functioning of the solar system beyond the specified product lifetime.

### BENEFITS AT A GLANCE

#### TECHNOLOGY

- ✓ Suitable for flat roofs with low payload
- ✓ Non-penetrative installation
- ✓ Suitable for solar modules up to 50 mm frame height
- ✓ Meets the requirements of DIN 1055 and Eurocode 9
- ✓ Good load distribution due to large contact surface
- ✓ Tested in wind tunnel

#### SAFETY

- ✓ 10 years guarantee
- ✓ Tested and certified by VDE and TÜV
- ✓ Use of corrosion resistant materials only
- ✓ Provides controlled cable laying
- ✓ Anti-theft protection included
- ✓ Complete system documentation

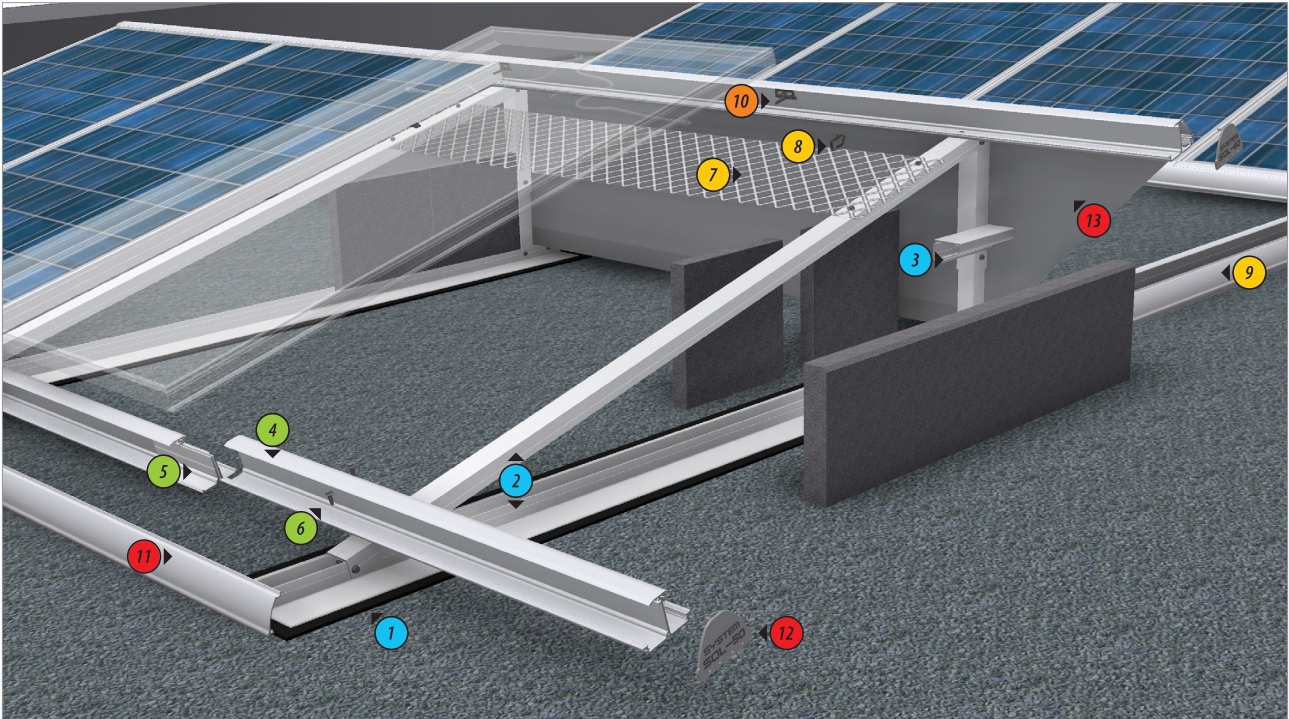
#### VISUAL APPEARANCE

- ✓ Harmonious integration due to insertion technology
- ✓ Visible components available in every RAL color
- ✓ Aluminium mill-finished, anodised or powder-coated
- ✓ Cover strips and end caps
- ✓ Prevents the build-up of dust and dirt

#### COST

- ✓ Material savings due to software based planning
- ✓ Quick installation due to insertion technology
- ✓ Timesaving maintenance and service work
- ✓ Optimal ventilation guarantees maximum yields
- ✓ 100% recyclable

# COMPONENTS OVERVIEW



No	Component Name	Scope Of Supply		Characteristics	
		Standard	Premium	Standard	Premium
1	Rubber mat	●	●	◇	◇
2	Soloflex console	●	●	■	■
3	Ballast mounting bracket	○	○	■	■
4	Horizontal profile XXL / XL ***	●	●	■	◆
5	Horizontal jointer	●	●	■	■
6	Self-drilling screw	●	●	+	+
7	Cable protection net	○	●	▲	▲
8	Cable clip	○	●	▲	▲
9	Cable duct	○	●	■	■
10	Anti-theft protection	●	●	▲	▲
11	Cover strip	○	●	■	◆
12	End cap	●	●	▲	◆
13	Wind net	●	●	▲	▲

Available at:

- included
- optional
- ◇ rubber
- ▲ plastic
- +
- stainless steel
- aluminium mill-finished\*
- ◆ aluminium anodized\* or powder-coated\*\*

- \* available only in silver
- \*\* available in every RAL color
- \*\*\* type selection depending on static boundary conditions

Copyright © 2012 SEN Solare Energiesysteme Nord Vertriebsgesellschaft mbH. All rights reserved.  
 The information contained herein is subject to change without notice. Edition 11/2012  
 SEN Solare Energiesysteme Nord Vertriebsgesellschaft mbH, Weerpedorfer Ring 3, D-28879 Grasberg  
 Telephone +49 4208 91 69 - 0, Telefax +49 4208 91 69 - 30, info@sen.eu, www.sen.eu

