

**YBP165-48**    **YBP170-48**  
**YBP175-48**    **YBP180-48**  
**YBP185-48**    **YBP190-48**  
**YBP195-48**



**STRENGTHS**

- Tolerance  $\pm 3\%$
- Plug & Play Connectors
- High Transmission,Low Iron Tempered Glass
- Bypass Diodes Protection

**WARRANTY**

- Manufacturing: 5 years
- Power production:90%:10years  
80%:25years

**CERTIFICATIONS**

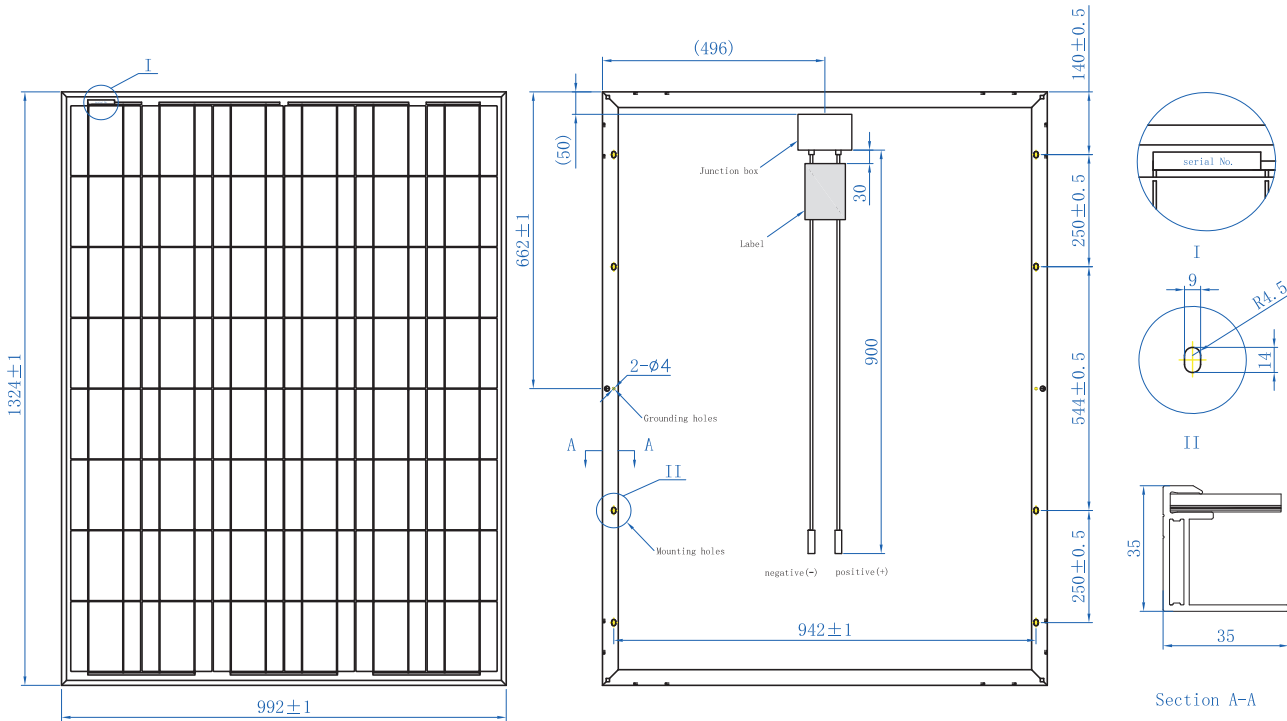


## SPECIFICATIONS

Module Type		YBP165-48	YBP170-48	YBP175-48	YBP180-48	YBP185-48	YBP190-48	YBP195-48
Maximum Power	Pm(W)	<b>165W</b>	<b>170W</b>	<b>175W</b>	<b>180W</b>	<b>185W</b>	<b>190W</b>	<b>195W</b>
Tolerance	(%)	$\pm 3$	$\pm 3$	$\pm 3$	$\pm 3$	$\pm 3$	$\pm 3$	$\pm 3$
Open Circuit Voltage	Voc(V)	28.75	28.8	28.85	29.14	29.38	29.8	31.1
Short Circuit Current	Isc(A)	7.47	7.72	7.95	8.1	8.23	8.19	8.24
Maximum Power Voltage	Vm(V)	23.66	23.8	24.1	24.29	24.48	24.6	25
Maximum Power Current	Im(A)	6.97	7.14	7.26	7.41	7.56	7.71	7.8
Module Efficiency	(%)	12.56	12.94	13.32	13.70	14.09	14.44	14.85
Cell Type	(mm)	156×156 (Poly-Crystalline Silicon)						
Number of Cells	(Pcs)	48						
Maximum System Voltage	(V)	DC1000						
Temp. Coeff. of Voc	(%/°C)	-0.35						
Temp. Coeff. of Isc	(%/°C)	0.05						
Temp. Coeff. of Pm	(%/°C)	-0.45						
Operating Temperature	(°C)	-40 to 85						
Nominal Operating Cell Temperature(NOCT)	(°C)	45±2						
Max.Series Fuse	(A)	15						
Pressure Bearing	(Pa)	≤2400						

STC(Standard Test Conditions): 1000W/m<sup>2</sup> AM=1.5 25°C

## PHYSICAL CHARACTERISTICS Unit:mm



## ELECTRICAL CHARACTERISTICS

