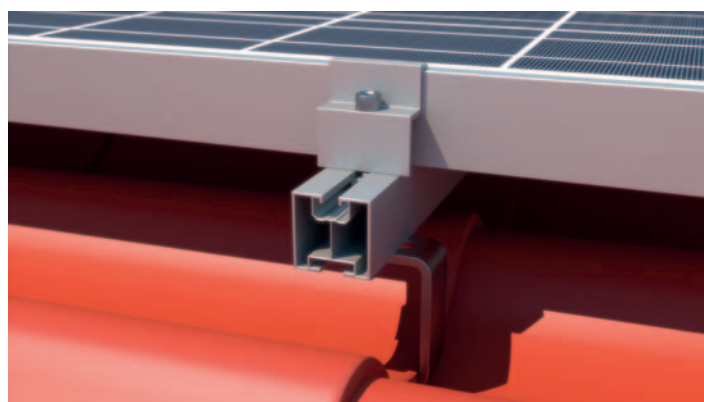
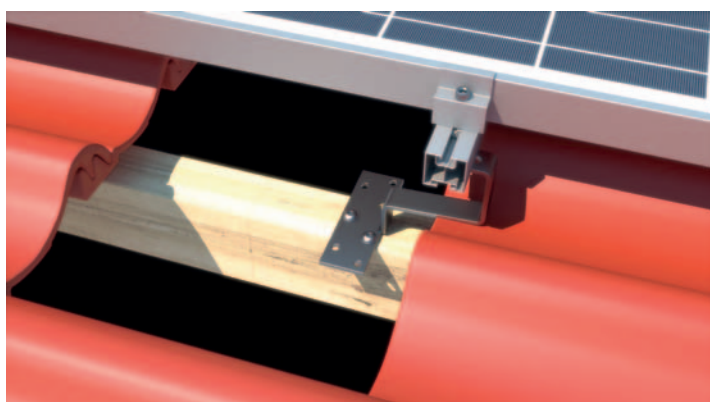
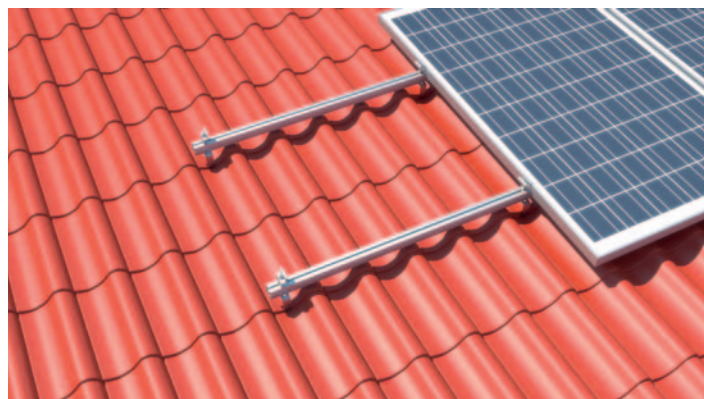
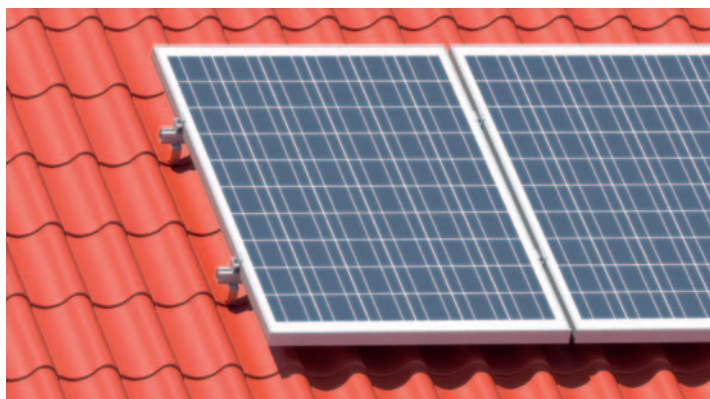


SYSTEM REM-05 VERTICAL

PANTILE ROOF I



Art. 0111

Mounting Rail 40 type I
Measurements: 40x40
Length: 6200mm, 3100mm, 2070mm
Joining screws: top M8, bottom M10
Material: AL6060T6



Art. 007

Pantile Roof Hook
Plate: 150x50x5, (7x)Hole: Ø9mm
Bar: 30x5 Long hole: 11x30
Purpose: ceramic tile, concrete tile
Material: A2 1.4301 shot blasting



Art. 011

Pantile Roof Hook Adjustable VARIO
Plate: 140x56x35x5 (80x5), (9x) Hole:
Ø9 mm,
Bar Z: 30x5, Bar L: 30x5, long Hole: 11x34,
included screws M10 A2
Use: pantile roof type with uneven roof
surface area
Material: A2 1.4301 stainless steel



Art. 0129

Hammerhead screws 28/15
Measurements:
M8 16+70
M10 16+100
Use: Mounting Rail Art. 0110
Material: A2 1.4301 stainless steel



Art. 0134

Hexagon flange nuts with serration
DIN 6923
M6
M8
M10
M12
Material: 1.4301 A2



Art. 0132

Hexagon socket cap screws DIN 912
with serration
M6 12+60
Material: A2 1.4301 stainless steel



Art. 080

T-slot nuts, self aligning with spring ball
M8
Used with hexagon socket cap screw
Art. 0132
Use: for Mounting Rails Art. 0109, Art.
0110, Art. 062, Art. 0111, Art. 0112
Material: AL 6060T6



Art. 0147

Click
M8
Material: Aluminium
for rails: Art. 0109, Art. 0111



Art. 073

Middle Clamp
Length 50mm (standard)
Length 60mm - 100mm
Height 30mm
Thickness 3mm
Colors: plain aluminium/black
Material: AL 6060T6



Art. 075

End clamp
Length: 50 (standard)
Length: 70mm
Height: from 30mm to 50mm
Thickness 3mm
Colors: plain aluminium/black
Material: AL 6060T6



Art. 0127

Screw TCS with serration
M6 60+160
M8 60+400
Use: Roof Hook
Material: A2 1.4301 stainless steel