



www.demingpower.cn



济南德明电源设备有限公司是一家专注于风能、太阳能等可再生能源电源产品研发、生产、销售和服务的高新技术企业。在行业内有很高的知名度及口碑，是中国风能协会的常任理事单位。是国家援助国外项目的指定产品。90%的产品用于出口，主要销往英国、美国、德国、加拿大、泰国、韩国、日本、土耳其、印度、印尼等国家。

主要产品有离网风力发电机控制器、并网风力发电机控制器、太阳能充电控制器、风光互补控制器、风光互补路灯控制器、并网逆变电源、离网逆变电源等。

德明以技术创新为企业发展的根本，目前拥有专业技术研发人员10余人，其中博士生导师1人，硕士5人，并与山东大学、山东建筑大学等高校合作。年研发费用不少于销售收入的20%，不断探索新能源电源领域的先进技术，如风力发电机电磁控制技术，MPPT技术，风光互补系统远程监控等。现拥有三项核心技术的国家发明专利，八项实用新型专利，风力发电机控制技术已经达到国际先进水平。

德明所有产品质量保证体系完善，实行全面、全员、全过程的质量控制，出厂前逐台严格测试，各项性能优于国家有关标准，全部产品通过欧盟CE认证及UL认证。

Jinan Deming Power Equipment Co., Ltd. is a high-tech enterprise which specializes in the design & manufacturing solar and wind power equipments. Main products include controller of off-grid wind turbine generator, controller of grid-connected wind turbine generator, solar energy controller, wind-solar hybrid controller, wind-solar hybrid streetlight controller and inverter, etc.

Deming takes technical innovation as fundamental, with more than 10 technicians, including 1 doctoral supervisor and 5 masters. We are cooperating with Shandong University, Shandong Construction University and invest not less than 20% of sales revenue every year for the new technology development such as EMCON of wind turbine, MPPT application and remote monitoring of hybrid solar wind power system, etc. Now we have three National Invention Patents of core technology and the wind turbine control technology has reached the international advanced level.

The products are manufactured under perfect quality guarantee system, with quality control adopted in each aspect of the production process. All equipments must be strictly tested before delivery to make sure the properties are superior to relevant national standard. All products have passed CE and UL certificate.



DEMING IS DEVOTED
TO ENERGY SAVING

我们致力于绿色节能





Qualification

公司资质



CONTENTS

企业简介 Company profile.....	02
公司资质 Qualification	06
离网太阳能充电控制器	08
Off-grid Solar Charge Controller	
太阳能路灯控制器	32
Solar charge street lamps controller	
双路太阳能控制器	33
Solar charge street lamps controller	
太阳能控制逆变一体机	34
solar charger inverter	
太阳能烧水控制器	50
Solar Water Heating Controller	
模块化光伏电站控制器	52
Modular Photovoltaic Power Station Controller	
监控软件 Monitoring Software	53
可选备件 Optional Parts.....	54

离网太阳能发电系统 | Off-grid Solar Panel Power System

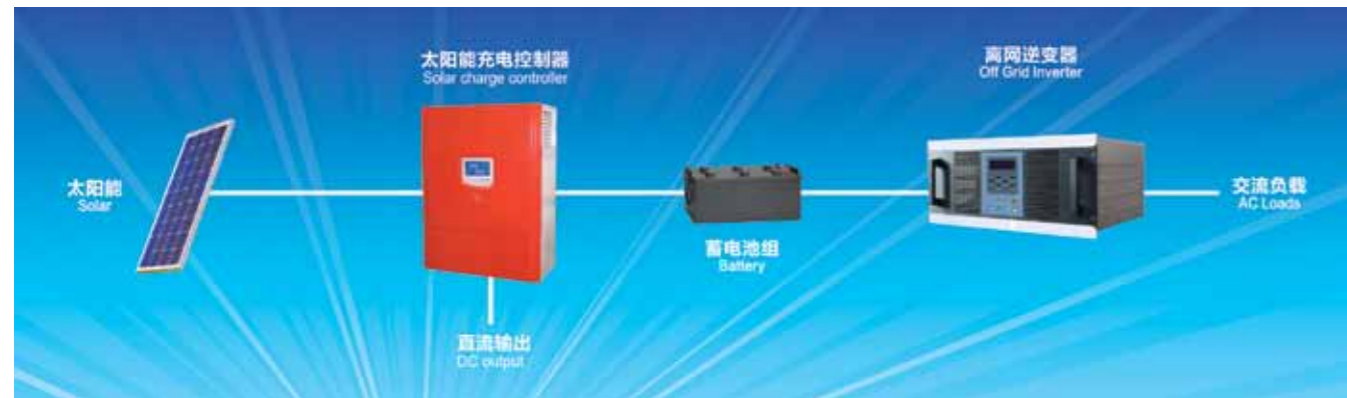
离网太阳能发电系统一般是由太阳能电池板、蓄电池、太阳能充电控制器、离网逆变器等部件组成。太阳光照通过太阳能电池板转换为电能，通过控制器给蓄电池充电，再通过离网逆变器将蓄电池的直流电转化为交流电，供用电设备使用。

Off-grid solar power generation system including solar panel array, solar charge controller, battery group, Off-grid inverter, etc. In the sunshine, the solar panel array converts solar energy to electrical energy and charge to the battery group by the charge controller. And converts the DC to AC for the loading.

应用领域 | Application

- ◆ 用于边远无电地区如高原、海岛、牧区、边防哨所等军民生活用电。
For desolate area like mountain, island, pasturing area, etc.
- ◆ 用于交通领域如航标灯、交通/铁路信号灯、交通警示/标志灯、路灯、高空障碍灯、高速公路/铁路无线电话亭、无人值守道班供电等。
For transportation system like beacon light, traffic light, street light, etc.
- ◆ 用于通讯/通信领域：太阳能无人值守微波中继站、光缆维护站等。
For communication system: unattached operation microwave middle station, optical cable maintenance station, etc.
- ◆ 灯具电源：如庭院灯、路灯等。
For lighting power like garden lamp, street light, etc.
- ◆ 光伏电站：独立光伏电站、风光(柴)互补电站、各种大型停车场充电站、家庭小型发电站、工厂小型发电站等。
For photovoltaic power station, wind-solar power station, park charging station, family power house, factory power station, etc.
- ◆ 太阳能建筑：将太阳能发电与建筑材料相结合，使得未来的大型建筑实现电力自给，是未来一大发展方向。
For solar building: has good business future.
- ◆ 政府形象工程
For the new technology application project.

系统原理图 | System Structure



性能优异，功能齐全的太阳充电控制器

- ◆ 本产品依照GB/T19064-2003号国家标准生产，也可根据用户技术要求生产。
- ◆ 采用三阶梯式逐级限流充电方法，依据蓄电池组端电压的变化趋势自动控制多路太阳能电池组方阵的依次接通或切断。
- ◆ 采用多阵列的多路充电控制回路，每路均配有断路器开关，相互独立，操作方便，使用安全可靠。
- ◆ 具有蓄电池过充、电子短路、防反接保护、防止在夜间蓄电池向太阳能电池板反充放电等全自动保护功能。
- ◆ 大屏LCD显示。太阳能电池板、蓄电池、控制器工作状态一目了然（太阳能电池板电压、电流、功率显示，蓄电池电压、充电电流、充电功率显示）。
- ◆ 功率开关驱动电路和采样电路电气完全隔离，控制信号采用光耦隔离传输，使之具备极高的抗干扰能力和稳定性。
- ◆ 控制器内部设有防雷器。把窜入太阳能电池板的瞬时过电压限制在设备或系统所能承受的电压范围内，或将强大的雷电流泄流入地，保护设备不受雷电冲击而损坏。
- ◆ 所有控制全部采用工业级芯片，能在寒冷、高温、潮湿环境正常运行。
- ◆ 温度补偿功能。可根据各种类型蓄电池受温度影响的不同进行温度补偿。
- ◆ RS-232、RS-485、USB、GPRS、以太网等多种通讯方式最大化地满足不同场合的需求。

The solar charging controller with super performance and easy operating

- ◆ This product is manufactured according Chinese standard GB/T19064-2003 or according the customer's request.
- ◆ Adopt multistep sequential limiting current charge method, auto control multiple solar array connection or shut off orderly according to the battery group voltage change tendency.
- ◆ Adopt multiple-circuit charging-control circuit and individual killer switch on each circuit.
- ◆ With auto protection function of over charge, electronic short circuit, anti-reverse protection. Prevent the battery group reverse charging to the solar panel array at night.
- ◆ Big LCD screen shows the working status of solar panels, battery and controller. (the voltage, current, power of solar energy panel and battery)
- ◆ Power switch driving circuit is completely isolated from sampling circuit. The control signals is transmitted by opto isolation, with super-high disturbance rejection and stability.
- ◆ There are lightning protection device inside the controller. Limit instantaneous overvoltage which entered into solar panels under a level which the system can withstand; or unload the strong lightning current to the ground. To protect he equipment from lightning surge.
- ◆ Adopts the industrial-grade chips for all control, which can work under the cold, hot, humid conditions.
- ◆ Temperature compensation function. Compensate the temperature according different battery type.
- ◆ Fixable communication solution with RS-232,RS-485,USB,GPRS,Etherner,etc.



太阳能充电控制器 Solar charge controller



太阳能充电控制器技术参数12V

Technical parameters of the solar charge controller 12V

型号 Model	12V80A	12V100A	12V120A
配用蓄电池组电压 Battery group rated voltage	12V	12V	12V
太阳能电池板开路电压 PV open circuit voltage	60V	60V	60V
太阳能电池板额定电流 PV Rated current	80A	100A	120A
太阳能电池板最大功率 PV Max. power	960W	1200W	1440W
太阳能电池板输入路数 Input PV module road number	1路	1路	1路
功能 Function	自动停止充电, 自动恢复充电, 极性反接保护, 短路保护, 过流保护, 过热保护 Auto stop charge, auto recharge voltage; Protection: connecting contrary, over current, short circuit, over heat etc.		
显示 Display mode	液晶显示 LCD		
显示内容 Display content	太阳能板电压、太阳能板电流、太阳能板功率、蓄电池电压、充电电流 solar panel voltage, solar panel current, solar panel power, battery voltage, charge current		
浮充电压 (可调) Floating Charge Voltage (adjustable)	13.8V	13.8V	13.8V
停止充电电压 Stop charge voltage	15V±1	15V±1	15V±1
恢复充电电压 Recharge voltage	13.5V±1	13.5V±1	13.5V±1
太阳能板与蓄电池之间的压降 Voltage drop between PV and battery	1.5V		
最大自耗电 Max itself power consumption	100mA-150mA		
工作温度 Work environment temperature	-30-60°C		
相对湿度 Relative humidity	< 90% 不结露 < 90% No condensation		
海拔高度 Applicable altitude	< 3000m (超过 3000 米需降额使用) The rated power should be reduced when it is higher than 3000m		
噪音 (1m) Noise (1m)	< 40dB		
防护等级 Degree of protection	IP20 (室内 Indoor)		
制冷方式 Cooling method	强制风冷 Forced air cooling		
*远程通讯 (可选) *Communication interface (optional)	RS485/USB/GPRS/Ethernet		
温度补偿 (可选) *Temperature compensation(optional)	-4mv/°C/2V,-35°C~+80°C,精度 Accuracy:±1°C		
产品尺寸 Product size (mm)	395*320*170	395*320*170	395*320*170
重量 Weight	7kg	7kg	7kg

*以上技术参数仅供参考, 可根据用户需要定制。

*Above parameter only for reference. Could be custom made to user specifications.

太阳能充电控制器24V Solar charge controller 24V

型号 Model	24V50A	24V80A	24V100A	24V120A
配备蓄电池组电压 Battery group rated voltage	24V	24V	24V	24V
太阳能电池板开路电压 PV open circuit voltage	60V	60V	60V	60V
太阳能电池板额定电流 PV Rated current	50A	80A	100A	120A
太阳能电池板最大功率 PV Max. power	1200W	1920W	2400W	2880W
太阳能电池板输入路数 Input PV module road number	1 路	1 路	1 路	1 路
功能 Function	自动停止充电, 自动恢复充电, 极性反接保护, 短路保护, 过流保护, 过热保护 Auto stop charge, auto recharge voltage; Protection: connecting contrary, over current, short circuit, over heat etc.			
显示 Display mode	液晶显示 LCD			
显示内容 Display content	太阳能板电压、太阳能板电流、太阳能板功率、蓄电池电压、充电电流 solar panel voltage, solar panel current, solar panel power, battery voltage, charge current			
浮充电压 (可调) Floating Charge Voltage (adjustable)	27.6V	27.6V	27.6V	27.6V
停止充电电压 Stop charge voltage	30V±1	30V±1	30V±1	30V±1
恢复充电电压 Recharge voltage	27V±1	27V±1	27V±1	27V±1
太阳能板与蓄电池之间的压降 Voltage drop between PV and battery	1.5V			
最大自耗电 Max itself power consumption	100mA-150mA			
工作温度 Work environment temperature	-30-60°C			
相对湿度 Relative humidity	< 90% 不结露 < 90% No condensation			
海拔高度 Applicable altitude	< 3000m (超过 3000 米需降额使用) The rated power should be reduced when it is higher than 3000m			
噪音 (1m) Noise (1m)	< 40dB			
防护等级 Degree of protection	IP20 (室内 Indoor)			
制冷方式 Cooling method	强制风冷 Forced air cooling			
*远程通讯 (可选) *Communication interface (optional)	RS485/USB/GPRS/Ethernet			
温度补偿 (可选) *Temperature compensation(optional)	-4mv/°C/2V,-35°C~+80°C,精度 Accuracy:±1°C			
产品尺寸 Product size (mm)	395*320*170	395*320*170	395*320*170	395*320*170
重量 Weight	7kg	7kg	7kg	7kg

*以上技术参数仅供参考, 可根据用户需要定制。

*Above parameter only for reference. Could be custom made to user specifications.

太阳能充电控制器技术参数48V Technical parameters of the solar charge controller 48V

型号 Model	48V30A	48V50A	48V60A	48V80A
配备蓄电池组电压 Battery group rated voltage	48V	48V	48V	48V
太阳能电池板开路电压 PV open circuit voltage	100V/150V	100V/150V	100V/150V	100V/150V
太阳能电池板额定电流 PV Rated current	30A	50A	60A	80A
太阳能电池板最大功率 PV Max. power	1.44KW	1.44KW	2.88KW	3.84KW
太阳能电池板输入路数 Input PV module road number	1 路	1 路	1 路	1 路/2 路
功能 Function	自动停止充电, 自动恢复充电, 极性反接保护, 短路保护, 过流保护, 过热保护 Auto stop charge, auto recharge voltage; Protection: connecting contrary, over current, short circuit, over heat etc.			
显示 Display mode	液晶显示 LCD			
显示内容 Display content	太阳能板电压、太阳能板电流、太阳能板功率、蓄电池电压、充电电流 solar panel voltage, solar panel current, solar panel power, battery voltage, charge current			
浮充电压 (可调) Floating Charge Voltage (adjustable)	55.2V	55.2V	55.2V	55.2V
停止充电电压 Stop charge voltage	58V±2	58V±2	58V±2	58V±2
恢复充电电压 Recharge voltage	54V±2	54V±2	54V±2	54V±2
太阳能板与蓄电池之间的压降 Voltage drop between PV and battery	1.5V			
最大自耗电 Max itself power consumption	100mA-150mA			
工作温度 Work environment temperature	-30-60°C			
相对湿度 Relative humidity	< 90% 不结露 < 90% No condensation			
海拔高度 Applicable altitude	< 3000m (超过 3000 米需降额使用) The rated power should be reduced when it is higher than 3000m			
噪音 (1m) Noise (1m)	< 40dB			
防护等级 Degree of protection	IP20 (室内 Indoor)			
制冷方式 Cooling method	强制风冷 Forced air cooling			
*远程通讯 (可选) *Communication interface (optional)	RS485/USB/GPRS/Ethernet			
温度补偿 (可选) *Temperature compensation(optional)	-4mv/°C/2V,-35°C~+80°C,精度 Accuracy:±1°C			
产品尺寸 Product size (mm)	520*430*200	520*430*200	520*430*200	520*430*200
重量 Weight	8kg	8kg	10kg	10kg

*以上技术参数仅供参考, 可根据用户需要定制。

*Above parameter only for reference. Could be custom made to user specifications.

太阳能充电控制器48V Solar charge controller 48V

型号 Model	48V100A	48V150A	48V160A	48V200A
配备蓄电池组电压 Battery group rated voltage	48V	48V	48V	48V
太阳能电池板开路电压 PV open circuit voltage	100V/150V	100V/150V	100V/150V	100V/150V
太阳能电池板额定电流 PV Rated current	100A	150A	160A	200A
太阳能电池板最大功率 PV Max. power	4.8KW	7.2KW	7.68KW	9.6KW
太阳能电池板输入路数 Input PV module road number	1路/2路	2路/3路	2路/3路	2路/4路
功能 Function	自动停止充电, 自动恢复充电, 极性反接保护, 短路保护, 过流保护, 过热保护 Auto stop charge, auto recharge voltage; Protection: connecting contrary, over current, short circuit, over heat etc.			
显示 Display mode	液晶显示 LCD			
显示内容 Display content	太阳能板电压、太阳能板电流、太阳能板功率、蓄电池电压、充电电流 solar panel voltage, solar panel current, solar panel power, battery voltage, charge current			
浮充电压 (可调) Floating Charge Voltage (adjustable)	55.2V	55.2V	55.2V	55.2V
停止充电电压 Stop charge voltage	58V±2	58V±2	58V±2	58V±2
恢复充电电压 Recharge voltage	54V±2	54V±2	54V±2	54V±2
太阳能板与蓄电池之间的压降 Voltage drop between PV and battery	1.5V			
最大自耗电 Max itself power consumption	100mA-150mA			
工作温度 Work environment temperature	-30-60°C			
相对湿度 Relative humidity	< 90% 不结露 < 90% No condensation			
海拔高度 Applicable altitude	< 3000m (超过 3000 米需降额使用) The rated power should be reduced when it is higher than 3000m			
噪音 (1m) Noise (1m)	< 40dB			
防护等级 Degree of protection	IP20 (室内 Indoor)			
制冷方式 Cooling method	强制风冷 Forced air cooling			
*远程通讯 (可选) *Communication interface (optional)	RS485/USB/GPRS/Ethernet			
温度补偿 (可选) *Temperature compensation(optional)	-4mv/°C/2V, -35°C~+80°C,精度 Accuracy:±1°C			
产品尺寸 Product size (mm)	530*500*260 U	585*585*980 柜	585*585*980 柜	585*585*980 柜
重量 Weight	20kg	65kg	65kg	75kg

*以上技术参数仅供参考, 可根据用户需要定制。

*Above parameter only for reference. Could be custom made to user specifications.



太阳能充电控制器 Solar charge controller



太阳能充电控制器技术参数96V

Technical parameters of the solar charge controller 96V

型号 Model	96V30A	96V50A	96V100A	96V200A
配备蓄电池组电压 Battery group rated voltage	96Vdc	96Vdc	96Vdc	96Vdc
太阳能电池板开路电压 PV open circuit voltage	400V	400V	400V	400V
太阳能电池板额定电流 PV Rated current	30A	50A	100A	200A
太阳能电池板最大功率 PV Max. power	2880Wp	4800Wp	9600Wp	19200Wp
太阳能电池板输入路数 Input PV module road number	1 路	1 路	1 路/2 路	1 路/2 路
功能 Function	自动停止充电, 自动恢复充电, 极性反接保护, 短路保护, 过流保护, 过热保护 Auto stop charge, auto recharge voltage; Protection: connecting contrary, over current, short circuit, over heat etc.			
显示 Display mode	液晶显示 LCD			
显示内容 Display content	太阳能板电压、太阳能板电流、太阳能板功率、蓄电池电压、充电电流 solar panel voltage, solar panel current, solar panel power, battery voltage, charge current			
浮充电压 (可调) Floating Charge Voltage (adjustable)	110Vdc	110Vdc	110Vdc	110Vdc
停止充电电压 Stop charge voltage	116Vdc	116Vdc	116Vdc	116Vdc
恢复充电电压 Recharge voltage	108V	108V	108V	108V
太阳能板与蓄电池之间的压降 Voltage drop between PV and battery	1.5V			
最大自耗电 Max itself power consumption	100mA-150mA			
工作温度 Work environment temperature	-30-60°C			
相对湿度 Relative humidity	< 90% 不结露 < 90% No condensation			
海拔高度 Applicable altitude	< 3000m (超过 3000 米需降额使用) The rated power should be reduced when it is higher than 3000m			
噪音 (1m) Noise (1m)	< 40dB			
防护等级 Degree of protection	IP20 (室内 Indoor)			
制冷方式 Cooling method	强制风冷 Forced air cooling			
*远程通讯 (可选) *Communication interface (optional)	RS485/USB/GPRS/Ethernet			
温度补偿 (可选) *Temperature compensation(optional)	-4mv/°C/2V,-35°C~+80°C,精度 Accuracy:±1°C			
产品尺寸 Product size (mm)	520*430*200 U		760*600*180 挂	585*585*980 柜
重量 Weight	10kg		26kg	55kg

*以上技术参数仅供参考, 可根据用户需要定制。

*Above parameter only for reference. Could be custom made to user specifications.

太阳能充电控制器技术参数120V

Technical parameters of the solar charge controller 120V

型号 Model	120V30A	120V50A	120V60A	120V80A
配备蓄电池组电压 Battery group rated voltage	120Vdc	120Vdc	120Vdc	120Vdc
太阳能电池板开路电压 PV open circuit voltage	500V	500V	500V	500V
太阳能电池板额定电流 PV Rated current	30A	50A	60A	80A
太阳能电池板最大功率 PV Max. power	3600Wp	6000Wp	7200Wp	9600Wp
太阳能电池板输入路数 Input PV module road number	1 路	1 路	1 路	1 路
功能 Function	自动停止充电, 自动恢复充电, 极性反接保护, 短路保护, 过流保护, 过热保护 Auto stop charge, auto recharge voltage; Protection: connecting contrary, over current, short circuit, over heat etc.			
显示 Display mode	液晶显示 LCD			
显示内容 Display content	太阳能板电压、太阳能板电流、太阳能板功率、蓄电池电压、充电电流 solar panel voltage, solar panel current, solar panel power, battery voltage, charge current			
浮充电压 (可调) Floating Charge Voltage (adjustable)	138Vdc	138Vdc	138Vdc	138Vdc
停止充电电压 Stop charge voltage	150Vdc	150Vdc	150Vdc	150Vdc
恢复充电电压 Recharge voltage	135Vdc	135Vdc	135Vdc	135Vdc
太阳能板与蓄电池之间的压降 Voltage drop between PV and battery	1.5V			
最大自耗电 Max itself power consumption	100mA-150mA			
工作温度 Work environment temperature	-30-60°C			
相对湿度 Relative humidity	< 90% 不结露 < 90% No condensation			
海拔高度 Applicable altitude	< 3000m (超过 3000 米需降额使用) The rated power should be reduced when it is higher than 3000m			
噪音 (1m) Noise (1m)	< 40dB			
防护等级 Degree of protection	IP20 (室内 Indoor)			
制冷方式 Cooling method	强制风冷 Forced air cooling			
*远程通讯 (可选) *Communication interface (optional)	RS485/USB/GPRS/Ethernet			
温度补偿 (可选) *Temperature compensation(optional)	-4mv/°C/2V,-35°C~+80°C,精度 Accuracy:±1°C			
产品尺寸 Product size (mm)	520*430*200			
重量 Weight	12Kg			

*以上技术参数仅供参考, 可根据用户需要定制。

*Above parameter only for reference. Could be custom made to user specifications.

太阳能充电控制器技术参数120V

Technical parameters of the solar charge controller 120V

型号 Model	120V100A	120V150A	120V200A
配备蓄电池组电压 Battery group rated voltage	120Vdc	120Vdc	120Vdc
太阳能电池板开路电压 PV open circuit voltage	500V	500V	500V
太阳能电池板额定电流 PV Rated current	100A	150A	200A
太阳能电池板最大功率 PV Max. power	12KWp	18KWp	24KWp
太阳能电池板输入路数 Input PV module road number	2 路	2 路/4 路	2 路/4 路
功能 Function	自动停止充电, 自动恢复充电, 极性反接保护, 短路保护, 过流保护, 过热保护 Auto stop charge, auto recharge voltage; Protection: connecting contrary, over current, short circuit, over heat etc.		
显示 Display mode	液晶显示 LCD		
显示内容 Display content	太阳能板电压、太阳能板电流、太阳能板功率、蓄电池电压、充电电流 solar panel voltage, solar panel current, solar panel power, battery voltage, charge current		
浮充电压 (可调) Floating Charge Voltage (adjustable)	138Vdc	138Vdc	138Vdc
停止充电电压 Stop charge voltage	150Vdc	150Vdc	150Vdc
恢复充电电压 Recharge voltage	135Vdc	135Vdc	135Vdc
太阳能板与蓄电池之间的压降 Voltage drop between PV and battery	1.5V		
最大自耗电 Max itself power consumption	100mA-150mA		
工作温度 Work environment temperature	-30-60°C		
相对湿度 Relative humidity	< 90% 不结露 < 90% No condensation		
海拔高度 Applicable altitude	< 3000m (超过 3000 米需降额使用) The rated power should be reduced when it is higher than 3000m		
噪音 (1m) Noise (1m)	< 40dB		
防护等级 Degree of protection	IP20 (室内 Indoor)		
制冷方式 Cooling method	强制风冷 Forced air cooling		
*远程通讯 (可选) *Communication interface (optional)	RS485/USB/GPRS/Ethernet		
温度补偿 (可选) *Temperature compensation(optional)	-4mv/°C/2V, -35°C~+80°C,精度 Accuracy:±1°C		
产品尺寸 Product size (mm)	520*430*200		
重量 Weight	12kg		

太阳能充电控制器技术参数192V

Technical parameters of the solar charge controller 192V

型号 Model	192V30A	192V50A	192V60A	192V80A
配备蓄电池组电压 Battery group rated voltage	192Vdc	192Vdc	192Vdc	192Vdc
太阳能电池板额定电流 PV Rated current	30A	50A	60A	80A
太阳能电池板开路电压 PV open circuit voltage	500V	500V	500V	500V
太阳能电池板最大功率 PV Max. power	5760Wp	9600Wp	11520Wp	15360Wp
太阳能电池板输入路数 Input PV module road number	1 路	1 路	1 路	1 路
功能 Function	自动停止充电, 自动恢复充电, 极性反接保护, 短路保护, 过流保护, 过热保护 Auto stop charge, auto recharge voltage; Protection: connecting contrary, over current, short circuit, over heat etc.			
显示 Display mode	液晶显示 LCD			
显示内容 Display content	太阳能板电压、太阳能板电流、太阳能板功率、蓄电池电压、充电电流 solar panel voltage, solar panel current, solar panel power, battery voltage, charge current			
浮充电压 (可调) Floating Charge Voltage (adjustable)	220Vdc	220Vdc	220Vdc	220Vdc
停止充电电压 Stop charge voltage	232Vdc	232Vdc	232Vdc	232Vdc
恢复充电电压 Recharge voltage	216Vdc	216Vdc	216Vdc	216Vdc
太阳能板与蓄电池之间的压降 Voltage drop between PV and battery	1.5V			
最大自耗电 Max itself power consumption	100mA-150mA			
工作温度 Work environment temperature	-30-60°C			
相对湿度 Relative humidity	< 90% 不结露 < 90% No condensation			
海拔高度 Applicable altitude	< 3000m (超过 3000 米需降额使用) The rated power should be reduced when it is higher than 3000m			
噪音 (1m) Noise (1m)	< 40dB			
防护等级 Degree of protection	IP20 (室内 Indoor)			
制冷方式 Cooling method	强制风冷 Forced air cooling			
*远程通讯 (可选) *Communication interface (optional)	RS485/USB/GPRS/Ethernet			
温度补偿 (可选) *Temperature compensation(optional)	-4mv/°C/2V, -35°C~+80°C,精度 Accuracy:±1°C			
产品尺寸 Product size (mm)	520*430*200 挂			
重量 Weight	12Kg			

*以上技术参数仅供参考, 可根据用户需要定制。*Above parameter only for reference. Could be custom made to user specifications.

太阳能充电控制器技术参数192V

Technical parameters of the solar charge controller 192V

型号 Model	192V100A	192V150A	192V200A	192V300A
配用蓄电池组电压 Battery group rated voltage	192Vdc	192Vdc	192Vdc	192Vdc
太阳能电池板额定电流 PV Rated current	100A	150A	200A	300A
太阳能电池板开路电压 PV open circuit voltage	500V	500V	500V	500V
太阳能电池板最大功率 PV Max. power	19200Wp	28800Wp	38400Wp	57600Wp
太阳能电池板输入路数 Input PV module road number	2 路	2 路	4 路	6 路
功能 Function	自动停止充电, 自动恢复充电, 极性反接保护, 短路保护, 过流保护, 过热保护 Auto stop charge, auto recharge voltage; Protection: connecting contrary, over current, short circuit, over heat etc.			
显示 Display mode	液晶显示 LCD			
显示内容 Display content	太阳能板电压、太阳能板电流、太阳能板功率、蓄电池电压、充电电流 solar panel voltage, solar panel current, solar panel power, battery voltage, charge current			
浮充电压 (可调) Floating Charge Voltage (adjustable)	220Vdc	220Vdc	220Vdc	220Vdc
停止充电电压 Stop charge voltage	232Vdc	232Vdc	232Vdc	232Vdc
恢复充电电压 Recharge voltage	216Vdc	216Vdc	216Vdc	216Vdc
太阳能板与蓄电池之间的压降 Voltage drop between PV and battery	1.5V			
最大自耗电 Max itself power consumption	100mA-150mA			
工作温度 Work environment temperature	-30-60°C			
相对湿度 Relative humidity	< 90% 不结露 < 90% No condensation			
海拔高度 Applicable altitude	< 3000m (超过 3000 米需降额使用) The rated power should be reduced when it is higher than 3000m			
噪音 (1m) Noise (1m)	< 40dB			
防护等级 Degree of protection	IP20 (室内 Indoor)			
制冷方式 Cooling method	强制风冷 Forced air cooling			
*远程通讯 (可选) *Communication interface (optional)	RS485/USB/GPRS/Ethernet			
温度补偿 (可选) *Temperature compensation(optional)	-4mv/°C/2V, -35°C~+80°C,精度 Accuracy:±1°C			
产品尺寸 Product size (mm)	760*600*180 挂	690*590*1300 柜	690*590*1300 柜	700*620*1620 柜
重量 Weight	26Kg	115Kg	120Kg	145Kg

*以上技术参数仅供参考, 可根据用户需要定制。*Above parameter only for reference. Could be custom made to user specifications.



太阳能充电控制器

Solar charge controller



太阳能充电控制器技术参数220V

Technical parameters of the solar charge controller 220V

型号 Model	220V30A	220V50A	220V60A	220V80A
配备蓄电池组电压 Battery group rated voltage	220Vdc	220Vdc	220Vdc	220Vdc
太阳能电池板额定电流 PV Rated current	30A	50A	60A	80A
太阳能电池板开路电压 PV open circuit voltage	500V	500V	500V	500V
太阳能电池板最大功率 PV Max. power	6600Wp	11000Wp	13200Wp	17600Wp
太阳能电池板输入路数 Input PV module road number	1路	1路	1路	1路
功能 Function	自动停止充电, 自动恢复充电, 极性反接保护, 短路保护, 过流保护, 过热保护 Auto stop charge, auto recharge voltage; Protection: connecting contrary, over current, short circuit, over heat etc.			
显示 Display mode	液晶显示 LCD			
显示内容 Display content	太阳能板电压、太阳能板电流、太阳能板功率、蓄电池电压、充电电流 solar panel voltage, solar panel current, solar panel power, battery voltage, charge current			
浮充电压 (可调) Floating Charge Voltage (adjustable)	248Vdc	248Vdc	248Vdc	248Vdc
停止充电电压 Stop charge voltage	260Vdc	260Vdc	260Vdc	260Vdc
恢复充电电压 Recharge voltage	243Vdc	243Vdc	243Vdc	243Vdc
太阳能板与蓄电池之间的压降 Voltage drop between PV and battery	1.5V			
最大自耗电 Max itself power consumption	100mA-150mA			
工作温度 Work environment temperature	-30-60°C			
相对湿度 Relative humidity	< 90% 不结露 < 90% No condensation			
海拔高度 Applicable altitude	< 3000m (超过 3000 米需降额使用) The rated power should be reduced when it is higher than3000m			
噪音 (1m) Noise (1m)	< 40dB			
防护等级 Degree of protection	IP20 (室内 Indoor)			
制冷方式 Cooling method	强制风冷 Forced air cooling			
*远程通讯 (可选) *Communication interface (optional)	RS485/USB/GPRS/Ethernet			
温度补偿 (可选) *Temperature compensation(optional)	-4mv/°C/2V,-35°C~+80°C,精度 Accuracy:±1°C			
产品尺寸 Product size (mm)	520*430*200 U			
重量 Weight	12Kg			

*以上技术参数仅供参考, 可根据用户需要定制。*Above parameter only for reference. Could be custom made to user specifications.

太阳能充电控制器技术参数220V

Technical parameters of the solar charge controller 220V

型号 Model	220V100A	220V150A	220V200A	220V300A
配备蓄电池组电压 Battery group rated voltage	220Vdc	220Vdc	220Vdc	220Vdc
太阳能电池板额定电流 PV Rated current	100A	150A	200A	300A
太阳能电池板开路电压 PV open circuit voltage	500V	500V	500V	500V
太阳能电池板最大功率 PV Max. power	22000Wp	33000Wp	44000Wp	66000Wp
太阳能电池板输入路数 Input PV module road number	2路	2路	4路	6路
功能 Function	自动停止充电, 自动恢复充电, 极性反接保护, 短路保护, 过流保护, 过热保护 Auto stop charge, auto recharge voltage; Protection: connecting contrary, over current, short circuit, over heat etc.			
显示 Display mode	液晶显示 LCD			
显示内容 Display content	太阳能板电压、太阳能板电流、太阳能板功率、蓄电池电压、充电电流 solar panel voltage, solar panel current, solar panel power, battery voltage, charge current			
浮充电压 (可调) Floating Charge Voltage (adjustable)	248Vdc	248Vdc	248Vdc	248Vdc
停止充电电压 Stop charge voltage	260Vdc	260Vdc	260Vdc	260Vdc
恢复充电电压 Recharge voltage	243Vdc	243Vdc	243Vdc	243Vdc
太阳能板与蓄电池之间的压降 Voltage drop between PV and battery	1.5V			
最大自耗电 Max itself power consumption	100mA-150mA			
工作温度 Work environment temperature	-30-60°C			
相对湿度 Relative humidity	< 90% 不结露 < 90% No condensation			
海拔高度 Applicable altitude	< 3000m (超过 3000 米需降额使用) The rated power should be reduced when it is higher than3000m			
噪音 (1m) Noise (1m)	< 40dB			
防护等级 Degree of protection	IP20 (室内 Indoor)			
制冷方式 Cooling method	强制风冷 Forced air cooling			
*远程通讯 (可选) *Communication interface (optional)	RS485/USB/GPRS/Ethernet			
温度补偿 (可选) *Temperature compensation(optional)	-4mv/°C/2V,-35°C~+80°C,精度 Accuracy:±1°C			
产品尺寸 Product size (mm)	760*600*180 挂	690*590*1300 柜	690*590*1300 柜	700*620*1620 柜
重量 Weight	26Kg	115Kg	120Kg	145Kg

*以上技术参数仅供参考, 可根据用户需要定制。*Above parameter only for reference. Could be custom made to user specifications.



太阳能充电控制器 Solar charge controller



太阳能充电控制器技术参数240V

Technical parameters of the solar charge controller 240V

型号 Model	240V30A	240V50A	240V60A	240V80A
配备蓄电池组电压 Battery group rated voltage	240Vdc	240Vdc	240Vdc	240Vdc
太阳能电池板额定电流 PV Rated current	30A	50A	60A	80A
太阳能电池板开路电压 PV open circuit voltage	500V	500V	500V	500V
太阳能电池板最大功率 PV Max. power	7200Wp	12000Wp	14400Wp	19200Wp
太阳能电池板输入路数 Input PV module road number	1路	1路	1路	1路
功能 Function	自动停止充电, 自动恢复充电, 极性反接保护, 短路保护, 过流保护, 过热保护 Auto stop charge, auto recharge voltage; Protection: connecting contrary, over current, short circuit, over heat etc.			
显示 Display mode	液晶显示 LCD			
显示内容 Display content	太阳能板电压、太阳能板电流、太阳能板功率、蓄电池电压、充电电流 solar panel voltage, solar panel current, solar panel power, battery voltage, charge current			
浮充电压 (可调) Floating Charge Voltage (adjustable)	276Vdc	276Vdc	276Vdc	276Vdc
停止充电电压 Stop charge voltage	290Vdc	290Vdc	290Vdc	290Vdc
恢复充电电压 Recharge voltage	270Vdc	270Vdc	270Vdc	270Vdc
太阳能板与蓄电池之间的压降 Voltage drop between PV and battery	1.5V			
最大自耗电 Max itself power consumption	100mA-150mA			
工作温度 Work environment temperature	-30-60°C			
相对湿度 Relative humidity	< 90% 不结露 < 90% No condensation			
海拔高度 Applicable altitude	< 3000m (超过 3000 米需降额使用) The rated power should be reduced when it is higher than 3000m			
噪音 (1m) Noise (1m)	< 40dB			
防护等级 Degree of protection	IP20 (室内 Indoor)			
制冷方式 Cooling method	强制风冷 Forced air cooling			
*远程通讯 (可选) *Communication interface (optional)	RS485/USB/GPRS/Ethernet			
温度补偿 (可选) *Temperature compensation(optional)	-4mv/°C/2V, -35°C~+80°C,精度 Accuracy:±1°C			
产品尺寸 Product size (mm)	520*430*200 U			
重量 Weight	12Kg			

*以上技术参数仅供参考, 可根据用户需要定制。*Above parameter only for reference. Could be custom made to user specifications

太阳能充电控制器技术参数240V

Technical parameters of the solar charge controller 240V

型号 Model	240V100A	240V150A	240V200A	240V300A
配用蓄电池组电压 Battery group rated voltage	240Vdc	240Vdc	240Vdc	240Vdc
太阳能电池板额定电流 PV Rated current	100A	150A	200A	300A
太阳能电池板开路电压 PV open circuit voltage	500V	500V	500V	500V
太阳能电池板最大功率 PV Max. power	24000Wp	36000Wp	48000Wp	72000Wp
太阳能电池板输入路数 Input PV module road number	2 路	2 路	4 路	6 路
功能 Function	自动停止充电, 自动恢复充电, 极性反接保护, 短路保护, 过流保护, 过热保护 Auto stop charge, auto recharge voltage; Protection: connecting contrary, over current, short circuit, over			
显示 Display mode	液晶显示 LCD			
显示内容 Display content	太阳能板电压、太阳能板电流、太阳能板功率、蓄电池电压、充电电流 solar panel voltage, solar panel current, solar panel power, battery voltage, charge current			
浮充电压 (可调) Floating Charge Voltage (adjustable)	276Vdc	276Vdc	276Vdc	276Vdc
停止充电电压 Stop charge voltage	290Vdc	290Vdc	290Vdc	290Vdc
恢复充电电压 Recharge voltage	270Vdc	270Vdc	270Vdc	270Vdc
太阳能板与蓄电池之间的压降 Voltage drop between PV and battery	1.5V			
最大自耗电 Max itself power consumption	100mA-150mA			
工作温度 Work environment temperature	-30-60°C			
相对湿度 Relative humidity	< 90% 不结露 < 90% No condensation			
海拔高度 Applicable altitude	< 3000m (超过 3000 米需降额使用) The rated power should be reduced when it is higher than 3000m			
噪音 (1m) Noise (1m)	< 40dB			
防护等级 Degree of protection	IP20 (室内 Indoor)			
制冷方式 Cooling method	强制风冷 Forced air cooling			
*远程通讯 (可选) *Communication interface (optional)	RS485/USB/GPRS/Ethernet			
温度补偿 (可选) *Temperature compensation(optional)	-4mv/°C/2V,-35°C~+80°C,精度 Accuracy:±1°C			
产品尺寸 Product size (mm)	760*600*180 挂	690*590*1300 柜	690*590*1300 柜	700*620*1620 柜
重量 Weight	26Kg	115Kg	120Kg	145Kg

*以上技术参数仅供参考, 可根据用户需要定制。*Above parameter only for reference. Could be custom made to user specifications.



太阳能充电控制器 Solar charge controller



太阳能充电控制器技术参数384V

Technical parameters of the solar charge controller 384V

型号 Model	384V30A	384V50A	384V60A	384V80A
配用蓄电池组电压 Battery group rated voltage	384Vdc	384Vdc	384Vdc	384Vdc
太阳能电池板额定电流 PV Rated current	30A	50A	60A	80A
太阳能电池板开路电压 PV open circuit voltage	750V	750V	750V	750V
太阳能电池板最大功率 PV Max. power	11.5KW	19.2KW	23KW	30KW
太阳能电池板输入路数 Input PV module road number	1 路	1 路	1 路/2 路	2 路
功能 Function	自动停止充电, 自动恢复充电, 极性反接保护, 短路保护, 过流保护, 过热保护 Auto stop charge, auto recharge voltage; Protection: connecting contrary, over current, short circuit, over heat etc.			
显示 Display mode	液晶显示 LCD			
显示内容 Display content	太阳能板电压、太阳能板电流、太阳能板功率、蓄电池电压、充电电流 solar panel voltage, solar panel current, solar panel power, battery voltage, charge current			
浮充电压 (可调) Floating Charge Voltage (adjustable)	442V	442V	442V	442V
停止充电电压 Stop charge voltage	464V±2	464V±2	464V±2	464V±2
恢复充电电压 Recharge voltage	432V±2	432V±2	432V±2	432V±2
太阳能板与蓄电池之间的压降 Voltage drop between PV and battery	1.5V			
最大自耗电 Max itself power consumption	100mA-150mA			
工作温度 Work environment temperature	-30-60°C			
相对湿度 Relative humidity	< 90% 不结露 < 90% No condensation			
海拔高度 Applicable altitude	< 3000m (超过 3000 米需降额使用) The rated power should be reduced when it is higher than 3000m			
噪音 (1m) Noise (1m)	< 40dB			
防护等级 Degree of protection	IP20 (室内 Indoor)			
制冷方式 Cooling method	强制风冷 Forced air cooling			
*远程通讯 (可选) *Communication interface (optional)	RS485/USB/GPRS/Ethernet			
温度补偿 (可选) *Temperature compensation(optional)	-4mv/°C/2V, -35°C~+80°C, 精度 Accuracy: ±1°C			
产品尺寸 Product size (mm)	520*430*200 U	520*430*200 U	760*600*180 挂	760*600*180 挂
重量 Weight	10kg	10kg	28kg	28kg

*以上技术参数仅供参考, 可根据用户需要定制。*Above parameter only for reference. Could be custom made to user specifications.

太阳能充电控制器技术参数384V

Technical parameters of the solar charge controller 384V

型号 Model	384V100A	384V150A	384V200A	384V250A
配用蓄电池组电压 Battery group rated voltage	384V	384V	384V	384V
太阳能电池板额定电流 PV Rated current	100A	150A	200A	250A
太阳能电池板开路电压 PV open circuit voltage	750V	750V	750V	750V
太阳能电池板最大功率 PV Max. power	38.4KW	57.6KW	76.8KW	96KW
太阳能电池板输入路数 Input PV module road number	2 路	3 路	4 路	5 路
功能 Function	自动停止充电, 自动恢复充电, 极性反接保护, 短路保护, 过流保护, 过热保护 Auto stop charge, auto recharge voltage; Protection: connecting contrary, over current, short circuit, over			
显示 Display mode	液晶显示 LCD			
显示内容 Display content	太阳能板电压、太阳能板电流、太阳能板功率、蓄电池电压、充电电流 solar panel voltage, solar panel current, solar panel power, battery voltage, charge current			
浮充电压 (可调) Floating Charge Voltage (adjustable)	442V	442V	442V	442V
停止充电电压 Stop charge voltage	464V±2	464V±2	464V±2	464V±2
恢复充电电压 Recharge voltage	432V±2	432V±2	432V±2	432V±2
太阳能板与蓄电池之间的压降 Voltage drop between PV and battery	1.5V			
最大自耗电 Max itself power consumption	100mA-150mA			
工作温度 Work environment temperature	-30-60°C			
相对湿度 Relative humidity	< 90% 不结露 < 90% No condensation			
海拔高度 Applicable altitude	< 3000m (超过 3000 米需降额使用) The rated power should be reduced when it is higher than 3000m			
噪音 (1m) Noise (1m)	< 40dB			
防护等级 Degree of protection	IP20 (室内 Indoor)			
制冷方式 Cooling method	强制风冷 Forced air cooling			
*远程通讯 (可选) *Communication interface (optional)	RS485/USB/GPRS/Ethernet			
温度补偿 (可选) *Temperature compensation(optional)	-4mv/°C/2V, -35°C~+80°C, 精度 Accuracy: ±1°C			
产品尺寸 Product size (mm)	585*585*980 柜	585*585*980 柜	690*590*1300 柜	690*590*1300 柜
重量 Weight	65Kg	65Kg	120Kg	120Kg

*以上技术参数仅供参考, 可根据用户需要定制。*Above parameter only for reference. Could be custom made to user specifications.

太阳能充电控制器技术参数480V

Technical parameters of the solar charge controller 480V

型号 Model	480V30A	480V50A	480V60A	480V80A
配备蓄电池组电压 Battery group rated voltage	480V	480V	480V	480V
太阳能电池板额定电流 PV Rated current	30A	50A	60A	80A
太阳能电池板开路电压 PV open circuit voltage	880V	880V	880V	880V
太阳能电池板最大功率 PV Max. power	14.4KW	24KW	28.8KW	38.4KW
太阳能电池板输入路数 Input PV module road number	1 路	1 路	1 路/2 路	2 路
功能 Function	自动停止充电, 自动恢复充电, 极性反接保护, 短路保护, 过流保护, 过热保护 Auto stop charge, auto recharge voltage; Protection: connecting contrary, over current, short circuit, over heat etc.			
显示 Display mode	液晶显示 LCD			
显示内容 Display content	太阳能板电压、太阳能板电流、太阳能板功率、蓄电池电压、充电电流 solar panel voltage, solar panel current, solar panel power, battery voltage, charge current			
浮充电压 (可调) Floating Charge Voltage (adjustable)	552V	552V	552V	552V
停止充电电压 Stop charge voltage	580V±2	580V±2	580V±2	580V±2
恢复充电电压 Recharge voltage	540V±2	540V±2	540V±2	540V±2
太阳能板与蓄电池之间的压降 Voltage drop between PV and battery	1.5V			
最大自耗电 Max itself power consumption	100mA-150mA			
工作温度 Work environment temperature	-30-60°C			
相对湿度 Relative humidity	< 90% 不结露 < 90% No condensation			
海拔高度 Applicable altitude	< 3000m (超过 3000 米需降额使用) The rated power should be reduced when it is higher than 3000m			
噪音 (1m) Noise (1m)	< 40dB			
防护等级 Degree of protection	IP20 (室内 Indoor)			
制冷方式 Cooling method	强制风冷 Forced air cooling			
*远程通讯 (可选) *Communication interface (optional)	RS485/USB/GPRS/Ethernet			
温度补偿 (可选) *Temperature compensation(optional)	-4mv/°C/2V, -35°C~+80°C, 精度 Accuracy: ±1°C			
产品尺寸 Product size (mm)	520*430*200 U	520*430*200 U	760*600*180 挂	760*600*180 挂
重量 Weight	10kg	10kg	28kg	28kg

*以上技术参数仅供参考, 可根据用户需要定制。*Above parameter only for reference. Could be custom made to user specifications.

太阳能充电控制器技术参数480V

Technical parameters of the solar charge controller 480V

型号 Model	480V100A	480V150A	480V200A	480V250A
配备蓄电池组电压 Battery group rated voltage	480V	480V	480V	480V
太阳能电池板额定电流 PV Rated current	100A	150A	200A	250A
太阳能电池板开路电压 PV open circuit voltage	880V	880V	880V	880V
太阳能电池板最大功率 PV Max. power	48KW	72KW	96KW	120KW
太阳能电池板输入路数 Input PV module road number	2 路	3 路	4 路	5 路
功能 Function	自动停止充电, 自动恢复充电, 极性反接保护, 短路保护, 过流保护, 过热保护 Auto stop charge, auto recharge voltage; Protection: connecting contrary, over current, short circuit, over			
显示 Display mode	液晶显示 LCD			
显示内容 Display content	太阳能板电压、太阳能板电流、太阳能板功率、蓄电池电压、充电电流 solar panel voltage, solar panel current, solar panel power, battery voltage, charge current			
浮充电压 (可调) Floating Charge Voltage (adjustable)	552V	552V	552V	552V
停止充电电压 Stop charge voltage	580V±2	580V±2	580V±2	580V±2
恢复充电电压 Recharge voltage	540V±2	540V±2	540V±2	540V±2
太阳能板与蓄电池之间的压降 Voltage drop between PV and battery	1.5V			
最大自耗电 Max itself power consumption	100mA-150mA			
工作温度 Work environment temperature	-30-60°C			
相对湿度 Relative humidity	< 90% 不结露 < 90% No condensation			
海拔高度 Applicable altitude	< 3000m (超过 3000 米需降额使用) The rated power should be reduced when it is higher than 3000m			
噪音 (1m) Noise (1m)	< 40dB			
防护等级 Degree of protection	IP20 (室内 Indoor)			
制冷方式 Cooling method	强制风冷 Forced air cooling			
*远程通讯 (可选) *Communication interface (optional)	RS485/USB/GPRS/Ethernet			
温度补偿 (可选) *Temperature compensation(optional)	-4mv/°C/2V, -35°C~+80°C, 精度 Accuracy: ±1°C			
产品尺寸 Product size (mm)	585*585*980 柜	585*585*980 柜	690*590*1300 柜	690*590*1300 柜
重量 Weight	65Kg	65Kg	120Kg	120Kg

*以上技术参数仅供参考, 可根据用户需要定制。*Above parameter only for reference. Could be custom made to user specifications.

太阳能路灯控制器

Solar charge street lamps controller



技术参数 | Technical Parameters

型号 Type	12V/24Vdc
额定充放电电流 Rated charging and discharging current	10A/15A
额定工作电压 Rated working voltage	12V/24V
太阳能电池板最大电压 The maximum voltage of the solar panel	18V/36V
太阳能电池板最大功率 The maximum power of the solar panel	180W/360W
负载工作方式 Working mode with load	光控、时控 Light control and time control
状态显示 State display	LED
防护等级 Protection class	IP30
使用环境 Operating environment	温度 -10-40°C 湿度 ≤80% Temperature: -10-40°C Humidity ≤80%
停止充电电压 Stop charging voltage	14.4V±0.1/28.8V±0.1
自动恢复充电动作电压 Automatic recovery power-supply voltage	13.8V±0.1/27.6V±0.1
停止直流输出电压 Stop DC output voltage	10.8V±0.1/21.6V±0.1
恢复直流输出电压 Recovery DC output voltage	12.8V±0.1/25.6V±0.1
产品尺寸 Product size	115×95×38 mm
重量 Weight	125 g

双路太阳能控制器

Solar charge street lamps controller



技术参数 | Technical Parameters

型号 Type	12V/24Vdc	12V/24Vdc
额定充放电电流 Rated charging and discharging current	10A	20A
额定工作电压 Rated working voltage	12V/24V	12V/24V
太阳能电池板最大电压 The maximum voltage of the solar panel	18V/36V	18V/36V
太阳能电池板最大功率 The maximum power of the solar panel	120W/240W	240W/480W
负载工作方式 Working mode with load	光控、时控 Light control and time control	
状态显示 State display	LED	LED
防护等级 Protection class	IP30	IP30
使用环境 Operating environment	温度 -10-40°C 湿度 ≤80% Temperature: -10-40°C Humidity ≤80%	
停止充电电压 Stop charging voltage	14.6V±0.1/29.2V±0.1	14.6V±0.1/29.2V±0.1
直充充电电压 Direct charge voltage	14.4V±0.1/28.8V±0.1 维持时间: 30min Keep time: 30min)	
浮充充电电压 Float charging voltage	13.6V±0.1/27.2V±0.1 (维持时间: 30min Keep time: 30min)	
自动恢复充电动作电压 Automatic recovery power-supply voltage	13.2V±0.1/26.4V±0.1	13.2V±0.1/26.4V±0.1
停止直流输出电压 Stop DC output voltage	11.1V±0.1/22.2V±0.1	11.1V±0.1/22.2V±0.1
恢复直流输出电压 Recovery DC output voltage	12.6V±0.1/25.2V±0.1	12.6V±0.1/25.2V±0.1
温度补偿 Temperature compensation	-5mv/°C/2V	-5mv/°C/2V
产品尺寸 Product size	126*89*26 mm	126*89*26 mm
重量 Weight	200 g	250 g



太阳能控制逆变一体机 solar charger inverter



功能齐全的太阳能控制逆变一体机系统

- ◆ 本产品依照GB/T19064-2003, GB/T20321.1-2006号国家标准生产,也可根据用户技术要求生产。
- ◆ 大屏LCD显示+LED显示。太阳能电池板、蓄电池、控制器、逆变器工作状态一目了然(太阳能电压、电流、功率显示;蓄电池电压、充电电流、充电功率显示;逆变器输出电压、电流、频率显示)。
- ◆ 太阳能充电部分。采用MPPT充电方法。具有过充、电子短路、防反接保护,防止在夜间蓄电池向太阳能电池板反充放电。功率开关驱动电路和采样电路电气完全隔离,控制信号采用光耦隔离传输,使之具备极高的抗干扰能力和稳定性。
- ◆ 交流充电部分(柴油发电机或网电)。采用三阶段恒压限流充电方法,依据蓄电池组端电压的变化趋势自动控制。(可选)
- ◆ 蓄电池部分。智能蓄电池保护系统。具有过充、过放、反接等保护功能。
- ◆ 逆变部分。纯正弦波输出,采用隔离变压器,安全可靠。适用于各种负载。输入过压保护、输入欠压保护、输出过载保护、输出短路保护、过热保护。
- ◆ 市电旁路。逆变优先,蓄电池电压低于一定值时,自动切换到市电输出;蓄电池电压恢复后,恢复逆变输出。也可选市电优先。(可选)
- ◆ 所有控制全部采用工业级芯片,能在寒冷、高温、潮湿环境正常运行。
- ◆ 内部设有防雷器。把窜入太阳能电池板的瞬时过电压限制在设备或系统所能承受的电压范围内,或将强大的雷电流泄流入地,保护设备不受雷电冲击而损坏。
- ◆ 温度补偿功能。可根据不同类型蓄电池受温度影响的大小进行温度补偿。(可选)
- ◆ RS-485、GPRS、以太网等多种通讯方式最大化地满足不同场合的需求。(可选)

Fully-functional Hybrid solar inverter charger system

- ◆ This product is manufactured according Chinese standard GB/T19064-2003, GB/T20321.1-2006 or according the customer's request.
- ◆ With LCD and LED display, showing the working situations of solar panels, batteries, controller and inverter. Including solar panels voltage, current and power; batteries voltage, charging current and charging power; inverter output voltage, current and frequency.
- ◆ Solar charging part. Adopt MPPT charging mode, with auto protection function of over charge, electronic short circuit, reverse connection protection. Prevent the battery group recharging to the solar panel array at night. Power switch driving circuit is completely isolated from sampling circuit. The control signals is transmitted by opto isolation, with super-high disturbance rejection and stability.
- ◆ AC charging part(diesel generator or mains). Adopt the three stages constant pressure and current limiting charge mode. Auto control according to the battery bank voltage.(optional)
- ◆ Battery part. Intelligent battery management function, with the protection of over-charge, over-discharge and reverse connection.
- ◆ Inverter part. Pure sine wave output, output isolated transformer, safe and stable Suitable for all sorts of electrical appliances, input over-voltage protection, low-voltage protection, output over-load protection, output short circuit protection, over heat protection.
- ◆ AC bypass. Inverter prioritized, when the battery voltage is under a certain value, auto switch to city grid output, when the batteries voltage recovers, the inverter output recovery. City grid priority is also available (optional).
- ◆ Adopts the industrial-grade components for all control, which can work under the cold, hot, humid conditions.
- ◆ There are lightning protection device inside the controller. Limit instantaneous overvoltage which entered into solar panels under a level which the system can withstand; or unload the strong lightning current to the ground. To protect the equipment from lightning surge.
- ◆ Temperature compensation function. Compensate the temperature according different battery type. (optional)
- ◆ Fixable communication solution with RS-232,RS-485,USB,GPRS,Ethernet,etc.(optional)

5KW太阳能控制逆变一体机技术参数
5KW solar charger inverter technical parameters

型号 Type		NDC48-5KVA	NDC96-5KVA	NDC240-5KVA
太阳能输入 PV input	输入电压范围 Max. voltage range (Voc)	0-150Vdc	0-500Vdc	0-500Vdc
	工作电压范围 Best working voltage (Vmp)	40-60Vdc	80-120Vdc	200-300Vdc
	最大电流 PV Max. current	100A	50A	20A
	最大功率 PV Max. power	5KW	5KW	5KW
	太阳能输入路数 PV Input ways	1路/2路	1路	1路
*市电充电 *AC rectifier	输入电压范围 Input voltage rang	单相 Single phase 110 – 120 – 220 – 240 VAC ± 20% 三相 Three phase 220 – 380 – 400 VAC ± 20%		
	频率范围 Frequency rang	50Hz / 60Hz ± 5Hz		
	软启动响应时间 Soft start	0-100% 10s		
	功率因数 Power factor (PF)	0.8		
	浮充电压 Float charge voltage	55.2Vdc±1%	110.4Vdc±1%	276Vdc±1%
	恒压充电电压 Constant pressure charge vol.	57.6Vdc±1%	115.2Vdc±1%	288Vdc±1%
	蓄电池允许最大充电电流 Max charge current for battery	≤蓄电池容量的 1/10 ≤Battery capacity 1/10		
蓄电池组 Battery group	额定电压 Rated voltage	48 VDC	96 VDC	240 VDC
	浮充电压 Float charge voltage (adjust)	55.2Vdc±1%	110Vdc±1%	276Vdc±1%
	停止充电电压 Stop charge voltage	58Vdc±1%	116Vdc±1%	290Vdc±1%
	恢复充电电压 Recharge voltage	54Vdc±1%	108Vdc±1%	270Vdc±1%
逆变 Inverter	额定容量 Rated capacity	5KVA		
	额定功率 Rated power	4KW		
	单相逆变电源 Single phase Inverter	额定电压 Rated voltage 110-120-220-240VAC±2% 额定电流 Rated current 45.5A-41.7A-22.5A-21A		
	三相逆变电源 Three phase Inverter	额定电压 Rated voltage 220-380-400VAC±2% 额定电流 Rated current 15A-7.5A-7A		
	额定频率 Rated frequency	50Hz / 60Hz ±0.05%		
	波形 Wave	纯正弦波 Pure sine wave		

5KW太阳能控制逆变一体机技术参数
5KW solar charger inverter technical parameters

	功率因数 Power factor (PF)	0.8
	过载能力 Overload capacity	120%,3 分钟 minutes, 150%,10 秒 second
	峰值系数 Crest factor (CF)	3:1
	最大效率 Max. efficiency	≥90%
*交流旁路 *Bypass	单相输入 Input single phase	电压范围 Voltage rang 110-120-220-240 VAC±15% 额定电流 Rated current 45.5A – 41.7A – 22.5 A – 21A
	三相输入 Input three phase	电压范围 Voltage rang 220-380-400 VAC±15% 额定电流 Rated current 15A – 7.5A – 7A
	旁路转换时间 Bypass transfer time	≤4 ms
工作环境 Working Environment	噪音(1米) Noise (1m)	≤50dB
	使用环境温度 Ambient temperature	-30°C~+50°C
	湿度 Humidity	0~95%,不结露 No condensation
	使用海拔 Altitude	< 3000m (超过 3000 米需降额使用) Higher than 3000m rated power should be reduced
其他 Other	绝缘强度(输入和输出) Dielectric strength	1500VAC,1 分钟 minute
	防护等级 Degree of protection	IP20 (室内 Indoor)
	*远程通讯 (可选) (optional) *Communication interface	RS485/USB/GPRS/Ethernet
	*温度补偿 (可选) (optional) *Temperature compensation	-4mv/°C/2V,-35°C~+80°C, 精度 Accuracy:±1°C
	尺寸 Size	650×650×1000 mm
	重量 Weight	120 kg
功能 Function	自动停止充电, 自动恢复充电, 输入接反保护, 短路保护, 过流保护, 输入欠压保护, 输出过载保护, 输出短路保护, 过热保护。 Auto stop charge, auto recharge voltage; Input reverse protection, over current protection, short circuit protection, input under-voltage protection, output overload protection, output short circuit protection, thermal protection etc.	

*表示功能可选, 如果您需要, 购买前请告之我们。

*It means the function is optional, if you want it, please tell us before your order.

以上技术参数仅供参考, 可以根据用户需求定制。

Above parameter only for reference. Could be custom made to user specifications.

10KW太阳能控制逆变一体机技术参数
10KW solar charger inverter technical parameters

型号 Type		NDC48-10KVA	NDC96-10KVA	NDC240-10KVA
太阳能输入 PV input	输入电压范围 Max. voltage range (Voc)	0-150Vdc	0-500Vdc	0-500Vdc
	工作电压范围 Best working voltage (Vmp)	40-60Vdc	80-120Vdc	200-300Vdc
	最大电流 PV Max. current	200A	100A	40A
	最大功率 PV Max. power	10KW	10KW	10KW
	太阳能板输入路数 PV Input ways	2路/4路	2路	1路
*市电充电 *AC rectifier	输入电压范围 Input voltage rang	单相 Single phase 110 – 120 – 220 – 240 VAC ± 20% 三相 Three phase 220 – 380 – 400 VAC ± 20%		
	频率范围 Frequency rang	50Hz / 60Hz ± 5Hz		
	软启动响应时间 Soft start	0-100% 10s		
	功率因数 Power factor (PF)	0.8		
	浮充电压 Float charge voltage	55.2Vdc±1%	110.4Vdc±1%	276Vdc±1%
	恒压充电电压 Constant pressure charge vol.	57.6Vdc±1%	115.2Vdc±1%	288Vdc±1%
	蓄电池允许最大充电电流 Max charge current for battery	≤蓄电池容量的 1/10 ≤Battery capacity 1/10		
蓄电池组 Battery group	额定电压 Rated voltage	48 VDC	96 VDC	240 VDC
	浮充电压 Float charge voltage (adjust)	55.2Vdc±1%	110Vdc±1%	276Vdc±1%
	停止充电电压 Stop charge voltage	58Vdc±1%	116Vdc±1%	290Vdc±1%
	恢复充电电压 Recharge voltage	54Vdc±1%	108Vdc±1%	270Vdc±1%
逆变 Inverter	额定容量 Rated capacity	10KVA		
	额定功率 Rated power	8KW		
	单相逆变电源 Single phase Inverter	额定电压 Rated voltage 110–120–220–240VAC±2% 额定电流 Rated current 91A–104A–45.5A–42A		
	三相逆变电源 Three phase Inverter	额定电压 Rated voltage 220–380–400VAC±2% 额定电流 Rated current 30A–15A–14A		
	额定频率 Rated frequency	50Hz / 60Hz ±0.05%		
波形 Wave	纯正弦波 Pure sine wave			

10KW太阳能控制逆变一体机技术参数
10KW solar charger inverter technical parameters

	功率因数 Power factor (PF)	0.8
	过载能力 Overload capacity	120%,3 分钟 minutes, 150%,10 秒 second
	峰值系数 Crest factor (CF)	3:1
	最大效率 Max. efficiency	≥90%
*交流旁路 *Bypass	单相输入 Input single phase	电压范围 Voltage rang 110–120–220–240 VAC±15% 额定电流 Rated current 91A – 104A – 45.5 A – 42A
	三相输入 Input three phase	电压范围 Voltage rang 220–380–400 VAC±15% 额定电流 Rated current 30A – 15A –14A
	旁路转换时间 Bypass transfer time	≤4 ms
工作环境 Working Environment	噪音(1米) Noise (1m)	≤50dB
	使用环境温度 Ambient temperature	-30°C~+50°C
	湿度 Humidity	0~95%,不结露 No condensation
	使用海拔 Altitude	< 3000m (超过 3000 米需降额使用) Higher than 3000m rated power should be reduced
其他 Other	绝缘强度(输入和输出) Dielectric strength	1500VAC,1 分钟 minute
	防护等级 Degree of protection	IP20 (室内 Indoor)
	*远程通讯 (可选) (optional) *Communication interface	RS485/USB/GPRS/Ethernet
	*温度补偿 (可选) (optional) *Temperature compensation	-4mv/°C/2V,-35°C~+80°C, 精度 Accuracy:±1°C
	尺寸 Size	650×650×1200 mm
重量 Weight	150 kg	
功能 Function	自动停止充电, 自动恢复充电, 输入接反保护, 短路保护, 过流保护, 输入欠压保护, 输出过载保护, 输出短路保护, 过热保护。 Auto stop charge, auto recharge voltage; Input reverse protection, over current protection, short circuit protection, input under-voltage protection, output overload protection, output short circuit protection, thermal protection etc.	

*表示功能可选, 如果您需要, 购买前请告之我们。

*It means the function is optional; if you want it; please tell us before your order.

以上技术参数仅供参考, 可以根据用户需求定制。

Above parameter only for reference. Could be custom made to user specifications.

15KW太阳能控制逆变一体机技术参数
15KW solar charger inverter technical parameters

型号 Type		NDC48-15KVA	NDC120-15KVA	NDC240-15KVA
太阳能输入 PV input	输入电压范围 Max. voltage range (Voc)	0-150Vdc	0-500Vdc	0-500Vdc
	工作电压范围 Best working voltage (Vmp)	40-60Vdc	120-150Vdc	200-300Vdc
	最大电流 PV Max. current	300A	125A	62.5A
	最大功率 PV Max. power	15KW	15KW	15KW
	太阳能板输入路数 PV Input ways	3 路/6 路	4 路	1 路
*市电充电 *AC rectifier	输入电压范围 Input voltage rang	单相 Single phase 110 – 120 – 220 – 240 VAC ± 20% 三相 Three phase 220 – 380 – 400 VAC ± 20%		
	频率范围 Frequency rang	50Hz / 60Hz ± 5Hz		
	软启动响应时间 Soft start	0-100% 10s		
	功率因数 Power factor (PF)	0.8		
	浮充电压 Float charge voltage	55.2Vdc±1%	138Vdc±1%	276Vdc±1%
	恒压充电电压 Constant pressure charge vol.	57.6Vdc±1%	144Vdc±1%	288Vdc±1%
	蓄电池允许最大充电电流 Max charge current for battery	≤蓄电池容量的 1/10 ≤Battery capacity 1/10		
蓄电池组 Battery group	额定电压 Rated voltage	48 VDC	120VDC	240 VDC
	浮充电压 Float charge voltage (adjust)	55.2Vdc±1%	138Vdc±1%	276Vdc±1%
	停止充电电压 Stop charge voltage	58Vdc±1%	150Vdc±1%	290Vdc±1%
	恢复充电电压 Recharge voltage	54Vdc±1%	135Vdc±1%	270Vdc±1%
逆变 Inverter	额定容量 Rated capacity	15KVA		
	额定功率 Rated power	12KW		
	单相逆变电源 Single phase Inverter	额定电压 Rated voltage 110–120–220–240VAC±2% 额定电流 Rated current 136A–125A–68A–62.5A		
	三相逆变电源 Three phase Inverter	额定电压 Rated voltage 220–380–400VAC±2% 额定电流 Rated current 45A–22.5A–20A		
	额定频率 Rated frequency	50Hz / 60Hz ±0.05%		
波形 Wave	纯正弦波 Pure sine wave			

15KW太阳能控制逆变一体机技术参数
15KW solar charger inverter technical parameters

	功率因数 Power factor (PF)	0.8
	过载能力 Overload capacity	120%,3 分钟 minutes, 150%,10 秒 second
	峰值系数 Crest factor (CF)	3:1
	最大效率 Max. efficiency	≥90%
*交流旁路 *Bypass	单相输入 Input single phase	电压范围 Voltage rang 110–120–220–240 VAC±15% 额定电流 Rated current 136A –125A –68 A – 62.5A
	三相输入 Input three phase	电压范围 Voltage rang 220–380–400 VAC±15% 额定电流 Rated current 45A –22.5A – 20A
	旁路转换时间 Bypass transfer time	≤4 ms
工作环境 Working Environment	噪音(1 米) Noise (1m)	≤50dB
	使用环境温度 Ambient temperature	-30°C~+50°C
	湿度 Humidity	0~95%,不结露 No condensation
	使用海拔 Altitude	< 3000m (超过 3000 米需降额使用) Higher than 3000m rated power should be reduced
其他 Other	绝缘强度(输入和输出) Dielectric strength	1500VAC,1 分钟 minute
	防护等级 Degree of protection	IP20 (室内 Indoor)
	*远程通讯 (可选) (optional) *Communication interface	RS485/USB/GPRS/Ethernet
	*温度补偿 (可选) (optional) *Temperature compensation	-4mv/°C/2V,-35°C~+80°C, 精度 Accuracy:±1°C
	尺寸 Size	650×650×1500 mm
重量 Weight	200 kg	
功能 Function	自动停止充电, 自动恢复充电, 输入接反保护, 短路保护, 过流保护, 输入欠压保护, 输出过载保护, 输出短路保护, 过热保护。 Auto stop charge, auto recharge voltage; Input reverse protection, over current protection, short circuit protection, input under-voltage protection, output overload protection, output short circuit protection, thermal protection etc.	

*表示功能可选, 如果您需要, 购买前请告之我们。

*It means the function is optional, if you want it, please tell us before your order.

以上技术参数仅供参考, 可以根据用户需求定制。

Above parameter only for reference. Could be custom made to user specifications.

20KW太阳能控制逆变一体机技术参数
20KW solar charger inverter technical parameters

型号 Type	NDC48-20KVA	NDC120-20KVA	NDC240-20KVA	
太阳能输入 PV input	输入电压范围 Max. voltage range (Voc)	0-150Vdc	0-500Vdc	0-500Vdc
	工作电压范围 Best working voltage (Vmp)	40-60Vdc	120-150Vdc	200-300Vdc
	最大电流 PV Max. current	420A	166A	62.5A
	最大功率 PV Max. power	20KW	20KW	20KW
	太阳能输入路数 PV Input ways	8 路	4 路	2 路
*市电充电 *AC rectifier	输入电压范围 Input voltage rang	单相 Single phase 110 – 120 – 220 – 240 VAC ± 20% 三相 Three phase 220 – 380 – 400 VAC ± 20%		
	频率范围 Frequency rang	50Hz / 60Hz ± 5Hz		
	软启动响应时间 Soft start	0-100% 10s		
	功率因数 Power factor (PF)	0.8		
	浮充电压 Float charge voltage	55.2Vdc±1%	138Vdc±1%	276Vdc±1%
	恒压充电电压 Constant pressure charge vol.	57.6Vdc±1%	144Vdc±1%	288Vdc±1%
	蓄电池允许最大充电电流 Max charge current for battery	≤蓄电池容量的 1/10 ≤Battery capacity 1/10		
蓄电池组 Battery group	额定电压 Rated voltage	48 VDC	120VDC	240 VDC
	浮充电压 Float charge voltage (adjust)	55.2Vdc±1%	138Vdc±1%	276Vdc±1%
	停止充电电压 Stop charge voltage	58Vdc±1%	150Vdc±1%	290Vdc±1%
	恢复充电电压 Recharge voltage	54Vdc±1%	135Vdc±1%	270Vdc±1%
逆变 Inverter	额定容量 Rated capacity	20KVA		
	额定功率 Rated power	16KW		
	单相逆变电源 Single phase Inverter	额定电压 Rated voltage 110-120-220-240VAC±2% 额定电流 Rated current 181A-167A-91A-83A		
	三相逆变电源 Three phase Inverter	额定电压 Rated voltage 220-380-400VAC±2% 额定电流 Rated current 60A-30A-28A		
	额定频率 Rated frequency	50Hz / 60Hz ±0.05%		
波形 Wave	纯正弦波 Pure sine wave			

20KW太阳能控制逆变一体机技术参数
20KW solar charger inverter technical parameters

	功率因数 Power factor (PF)	0.8
	过载能力 Overload capacity	120%,3 分钟 minutes, 150%,10 秒 second
	峰值系数 Crest factor (CF)	3:1
	最大效率 Max. efficiency	≥90%
*交流旁路 *Bypass	单相输入 Input single phase	电压范围 Voltage rang 110-120-220-240 VAC±15% 额定电流 Rated current 181A – 167A – 91 A – 83A
	三相输入 Input three phase	电压范围 Voltage rang 220-380-400 VAC±15% 额定电流 Rated current 60A – 30A – 28A
	旁路转换时间 Bypass transfer time	≤4 ms
工作环境 Working Environment	噪音(1米) Noise (1m)	≤50dB
	使用环境温度 Ambient temperature	-30°C~+50°C
	湿度 Humidity	0~95%,不结露 No condensation
	使用海拔 Altitude	< 3000m (超过 3000 米需降额使用) Higher than 3000m rated power should be reduced
其他 Other	绝缘强度(输入和输出) Dielectric strength	1500VAC,1 分钟 minute
	防护等级 Degree of protection	IP20 (室内 Indoor)
	*远程通讯 (可选) (optional) *Communication interface	RS485/USB/GPRS/Ethernet
	*温度补偿 (可选) (optional) *Temperature compensation	-4mv/°C/2V,-35°C~+80°C, 精度 Accuracy:±1°C
	尺寸 Size	650×650×1500 mm
重量 Weight	250 kg	
功能 Function	自动停止充电, 自动恢复充电, 输入接反保护, 短路保护, 过流保护, 输入欠压保护, 输出过载保护, 输出短路保护, 过热保护。 Auto stop charge, auto recharge voltage; Input reverse protection, over current protection, short circuit protection, input under-voltage protection, output overload protection, output short circuit protection, thermal protection etc.	

*表示功能可选, 如果您需要, 购买前请告之我们。

*It means the function is optional, if you want it, please tell us before your order.

以上技术参数仅供参考, 可以根据用户需求定制。

Above parameter only for reference. Could be custom made to user specifications.

30KW太阳能控制逆变一体机技术参数
30KW solar charger inverter technical parameters

型号 Type	NDC120-30KVA		NDC240-30KVA		NDC384-30KVA	
太阳能输入 PV input	输入电压范围 Max. voltage range (Voc)	0-500Vdc		0-800Vdc		
	工作电压范围 Best working voltage (Vmp)	100-150Vdc		200-300Vdc		
	最大电流 PV Max. current	250A		125A		
	最大功率 PV Max. power	30KW		30KW		
	太阳能输入路数 PV Input ways	4路/6路		2路/4路		
*市电充电 *AC rectifier	输入电压范围 Input voltage rang	单相 Single phase 110 – 120 – 220 – 240 VAC ± 20% 三相 Three phase 220 – 380 – 400 VAC ± 20%				
	频率范围 Frequency rang	50Hz / 60Hz ± 5Hz				
	软启动响应时间 Soft start	0-100% 10s				
	功率因数 Power factor (PF)	0.8				
	浮充电压 Float charge voltage	138Vdc±1%	276Vdc±1%	441.6Vdc±1%		
	恒压充电电压 Constant pressure charge vol.	144Vdc±1%	288Vdc±1%	460.8Vdc±1%		
	蓄电池允许最大充电电流 Max charge current for battery	≤蓄电池容量的 1/10 ≤Battery capacity 1/10				
蓄电池组 Battery group	额定电压 Rated voltage	120VDC	240VDC	384 VDC		
	浮充电压 Float charge voltage (adjust)	138Vdc±1%	276Vdc±1%	442Vdc±1%		
	停止充电电压 Stop charge voltage	150Vdc±1%	290Vdc±1%	464Vdc±1%		
	恢复充电电压 Recharge voltage	135Vdc±1%	270Vdc±1%	432Vdc±1%		
逆变 Inverter	额定容量 Rated capacity	30KVA				
	额定功率 Rated power	24KW				
	单相逆变电源 Single phase Inverter	额定电压 Rated voltage 110–120–220–240VAC±2% 额定电流 Rated current 273A–250A–136A–125A				
	三相逆变电源 Three phase Inverter	额定电压 Rated voltage 220–380–400VAC±2% 额定电流 Rated current 91A–45A–41A				
	额定频率 Rated frequency	50Hz / 60Hz ±0.05%				
波形 Wave	纯正弦波 Pure sine wave					

30KW太阳能控制逆变一体机技术参数
30KW solar charger inverter technical parameters

	功率因数 Power factor (PF)	0.8
	过载能力 Overload capacity	120%,3 分钟 minutes, 150%,10 秒 second
	峰值系数 Crest factor (CF)	3:1
	最大效率 Max. efficiency	≥90%
*交流旁路 *Bypass	单相输入 Input single phase	电压范围 Voltage rang 110–120–220–240 VAC±15% 额定电流 Rated current 273A – 250A –136 A – 125A
	三相输入 Input three phase	电压范围 Voltage rang 220–380–400 VAC±15% 额定电流 Rated current 91A – 45A –41A
	旁路转换时间 Bypass transfer time	≤4 ms
工作环境 Working Environment	噪声(1米) Noise (1m)	≤50dB
	使用环境温度 Ambient temperature	-30°C~+50°C
	湿度 Humidity	0~95%,不结露 No condensation
	使用海拔 Altitude	< 3000m (超过 3000 米需降额使用) Higher than 3000m rated power should be reduced
其他 Other	绝缘强度(输入和输出) Dielectric strength	1500VAC,1 分钟 minute
	防护等级 Degree of protection	IP20 (室内 Indoor)
	*远程通讯 (可选) (optional) *Communication interface	RS485/USB/GPRS/Ethernet
	*温度补偿 (可选) (optional) *Temperature compensation	-4mv/°C/2V,-35°C~+80°C, 精度 Accuracy:±1°C
	尺寸 Size	650×650×1500 mm
重量 Weight	300 kg	
功能 Function	自动停止充电, 自动恢复充电, 输入接反保护, 短路保护, 过流保护, 输入欠压保护, 输出过载保护, 输出短路保护, 过热保护。 Auto stop charge, auto recharge voltage; Input reverse protection, over current protection, short circuit protection, input under-voltage protection, output overload protection, output short circuit protection, thermal protection etc.	

*表示功能可选, 如果您需要, 购买前请告之我们。

*It means the function is optional, if you want it, please tell us before your order.

以上技术参数仅供参考, 可以根据用户需求定制。

Above parameter only for reference. Could be custom made to user specifications.

50KW太阳能控制逆变一体机技术参数
50KW solar charger inverter technical parameters

型号 Type	NDC192-50KVA		NDC240-50KVA		NDC384-50KVA		
太阳能输入 PV input	输入电压范围 Max. voltage range (Voc)	0-500Vdc		0-500Vdc		0-800Vdc	
	工作电压范围 Best working voltage (Vmp)	160-240Vdc		200-300Vdc		320-480Vdc	
	最大电流 PV Max. current	260A		208A		130A	
	最大功率 PV Max. power	50KW		50KW		50KW	
	太阳能输入路数 PV Input ways	4路/6路		4路/6路		4路	
	*市电充电 *AC rectifier	输入电压范围 Input voltage rang	单相 Single phase 110 – 120 – 220 – 240 VAC ± 20% 三相 Three phase 220 – 380 – 400 VAC ± 20%				
频率范围 Frequency rang		50Hz / 60Hz ± 5Hz					
软启动响应时间 Soft start		0-100% 10s					
功率因数 Power factor (PF)		0.8					
浮充电压 Float charge voltage		220.8Vdc±1%	276Vdc±1%	441.6Vdc±1%			
恒压充电电压 Constant pressure charge vol.		230.4Vdc±1%	288Vdc±1%	460.8Vdc±1%			
蓄电池允许最大充电电流 Max charge current for battery		≤蓄电池容量的 1/10 ≤Battery capacity 1/10					
蓄电池组 Battery group		额定电压 Rated voltage	192 VDC	240 VDC	384 VDC		
	浮充电压 Float charge voltage (adjust)	220Vdc±1%	276Vdc±1%	442Vdc±1%			
	停止充电电压 Stop charge voltage	232Vdc±1%	290Vdc±1%	464Vdc±1%			
	恢复充电电压 Recharge voltage	216Vdc±1%	270Vdc±1%	432Vdc±1%			
	逆变 Inverter	额定容量 Rated capacity	50KVA				
额定功率 Rated power		40KW					
单相逆变电源 Single phase Inverter		额定电压 Rated voltage	110–120–220–240VAC±2%				
		额定电流 Rated current	454A–416A–227A–208A				
三相逆变电源 Three phase Inverter		额定电压 Rated voltage	220–380–400VAC±2%				
		额定电流 Rated current	151A–76A–69A				
	额定频率 Rated frequency	50Hz / 60Hz ±0.05%					
	波形 Wave	纯正弦波 Pure sine wave					

50KW太阳能控制逆变一体机技术参数
50KW solar charger inverter technical parameters

	功率因数 Power factor (PF)	0.8	
	过载能力 Overload capacity	120%,3 分钟 minutes, 150%,10 秒 second	
	峰值系数 Crest factor (CF)	3:1	
	最大效率 Max. efficiency	≥90%	
*交流旁路 *Bypass	单相输入 Input single phase	电压范围 Voltage rang 110–120–220–240 VAC±15% 额定电流 Rated current 454A – 416A – 227 A – 208A	
	三相输入 Input three phase	电压范围 Voltage rang 220–380–400 VAC±15% 额定电流 Rated current 151A – 76A – 69A	
	旁路转换时间 Bypass transfer time	≤4 ms	
工作环境 Working Environment	噪声(1米) Noise (1m)	≤50dB	
	使用环境温度 Ambient temperature	-30°C~+50°C	
	湿度 Humidity	0~95%,不结露 No condensation	
	使用海拔 Altitude	< 3000m (超过 3000 米需降额使用) Higher than 3000m rated power should be reduced	
其他 Other	绝缘强度(输入和输出) Dielectric strength	1500VAC,1 分钟 minute	
	防护等级 Degree of protection	IP20 (室内 Indoor)	
	*远程通讯 (可选) (optional) *Communication interface	RS485/USB/GPRS/Ethernet	
	*温度补偿 (可选) (optional) *Temperature compensation	-4mv/°C/2V,-35°C~+80°C, 精度 Accuracy:±1°C	
	尺寸 Size	650×1400×1500 mm	
	重量 Weight	510 kg	
功能 Function	自动停止充电, 自动恢复充电, 输入接反保护, 短路保护, 过流保护, 输入欠压保护, 输出过载保护, 输出短路保护, 过热保护。 Auto stop charge, auto recharge voltage; Input reverse protection, over current protection, short circuit protection, input under-voltage protection, output overload protection, output short circuit protection, thermal protection etc.		

*表示功能可选, 如果您需要, 购买前请告之我们。

*It means the function is optional, if you want it, please tell us before your order.

以上技术参数仅供参考, 可以根据用户需求定制。

Above parameter only for reference. Could be custom made to user specifications.

100KW太阳能控制逆变一体机技术参数
100KW solar charger inverter technical parameters

型号 Type	NDC240-100KVA	NDC384-100KVA	NDC480-100KVA	
太阳能输入 PV input	输入电压范围 Max. voltage range (Voc)	0-500Vdc	0-800Vdc	0-800Vdc
	工作电压范围 Best working voltage (Vmp)	200-300Vdc	320-480Vdc	400-600Vdc
	最大电流 PV Max. current	420A	260A	210A
	最大功率 PV Max. power	100KW	100KW	100KW
	太阳能输入路数 PV Input ways	8 路	6 路	4 路
	*市电充电 *AC rectifier	输入电压范围 Input voltage rang	单相 Single phase 110 – 120 – 220 – 240 VAC ± 20% 三相 Three phase 220 – 380 – 400 VAC ± 20%	
频率范围 Frequency rang		50Hz / 60Hz ± 5Hz		
软启动响应时间 Soft start		0-100% 10s		
功率因数 Power factor (PF)		0.8		
浮充电压 Float charge voltage		276Vdc±1%	441.6Vdc±1%	552Vdc±1%
恒压充电电压 Constant pressure charge vol.		288Vdc±1%	460.8Vdc±1%	576Vdc±1%
蓄电池允许最大充电电流 Max charge current for battery		≤蓄电池容量的 1/10 ≤Battery capacity 1/10		
蓄电池组 Battery group	额定电压 Rated voltage	240 VDC	384 VDC	480 VDC
	浮充电压 Float charge voltage (adjust)	276Vdc±1%	442Vdc±1%	552Vdc±1%
	停止充电电压 Stop charge voltage	290Vdc±1%	464Vdc±1%	580Vdc±1%
	恢复充电电压 Recharge voltage	270Vdc±1%	432Vdc±1%	540Vdc±1%
逆变 Inverter	额定容量 Rated capacity	100KVA		
	额定功率 Rated power	80KW		
	单相逆变电源 Single phase Inverter	额定电压 Rated voltage 110–120–220–240VAC±2% 额定电流 Rated current 910A–833A–455A–416A		
	三相逆变电源 Three phase Inverter	额定电压 Rated voltage 220–380–400VAC±2% 额定电流 Rated current 300A–150A–139A		
	额定频率 Rated frequency	50Hz / 60Hz ±0.05%		
波形 Wave	纯正弦波 Pure sine wave			

100KW太阳能控制逆变一体机技术参数
100KW solar charger inverter technical parameters

	功率因数 Power factor (PF)	0.8
	过载能力 Overload capacity	120%,3 分钟 minutes, 150%,10 秒 second
	峰值系数 Crest factor (CF)	3:1
	最大效率 Max. efficiency	≥90%
*交流旁路 *Bypass	单相输入 Input single phase	电压范围 Voltage rang 110–120–220–240 VAC±15% 额定电流 Rated current 910A – 833A – 455 A – 416A
	三相输入 Input three phase	电压范围 Voltage rang 220–380–400 VAC±15% 额定电流 Rated current 300A – 150A –139A
	旁路转换时间 Bypass transfer time	≤4 ms
工作环境 Working Environment	噪音(1 米) Noise (1m)	≤50dB
	使用环境温度 Ambient temperature	-30°C~+50°C
	湿度 Humidity	0~95%,不结露 No condensation
	使用海拔 Altitude	< 3000m (超过 3000 米需降额使用) Higher than 3000m rated power should be reduced
其他 Other	绝缘强度(输入和输出) Dielectric strength	1500VAC,1 分钟 minute
	防护等级 Degree of protection	IP20 (室内 Indoor)
	*远程通讯 (可选) (optional) *Communication interface	RS485/USB/GPRS/Ethernet
	*温度补偿 (可选) (optional) *Temperature compensation	-4mv/°C/2V,-35°C~+80°C, 精度 Accuracy:±1°C
	尺寸 Size	1600×1000×1700 mm
重量 Weight	730 kg	
功能 Function	自动停止充电, 自动恢复充电, 输入接反保护, 短路保护, 过流保护, 输入欠压保护, 输出过载保护, 输出短路保护, 过热保护。 Auto stop charge, auto recharge voltage; Input reverse protection, over current protection, short circuit protection, input under-voltage protection, output overload protection, output short circuit protection, thermal protection etc.	

*表示功能可选, 如果您需要, 购买前请告之我们。

*It means the function is optional, if you want it, please tell us before your order.

以上技术参数仅供参考, 可以根据用户需求定制。

Above parameter only for reference. Could be custom made to user specifications.



太阳能烧水控制器 Solar Water Heating Controller



太阳能烧水控制器技术参数 Solar water heating controller technical parameters

规格 Type	1KW	2KW	3KW	5KW	10KW
太阳能板最大功率 Solar panels max. power	1KW	2KW	3KW	5KW	10KW
太阳能板最高开路电压 PV open circuit voltage	500Vdc	500Vdc	500Vdc	500Vdc	500Vdc
太阳能板额定工作电压范围 PV rated work voltage rang	270-300Vdc	270-300Vdc	270-300Vdc	270-300Vdc	270-300Vdc
供电方式(可选) Power supply mode (Optional)	蓄电池 Battery 24Vdc 7Ah-15 Ah				
	网电 Grid 110V/120V/220V/230V 50HZ/60HZ				
工作方式 Working method	连续 continuous				
功能 Function	控制、烧水、充电(可选) Control, water heating, charge (Optional)				
显示 Display mode	液晶显示 LCD				
显示内容 Display content	太阳能板电压、太阳能板电流、太阳能板功率、蓄电池电压、充电电流 Solar panels voltage, Solar panels current, Solar panels power, Battery voltage, Charge current				
烧水控制器开始烧水电压(V) Start water heating voltage(V)	>200Vdc (可根据烧水管电压设置) (set according to the water heater voltage)				
烧水控制器停止烧水电压(V) Stop water heating voltage(V)	240Vdc±1% (可根据烧水管电压设置) (set according to the water heater voltage)				
工作温度 Work environment temperature	-30-60°C				
相对湿度 Relative humidity	<90% 不结露 <90% No condensation				
噪音 (1m) Noise (1m)	<40dB				
防护等级 Degree of protection	IP20 (室内 Indoor)				
制冷方式 Cooling method	强制风冷 Forced air cooling				
控制器尺寸 Size of the controller (mm)	520*430*200				760*600*180
控制器重量 Weight of the controller	28 Kg				39 Kg

*Above parameter only for reference. Could be custom made to user specifications.

*以上技术参数仅供参考,可依照用户技术参数定制

模块化光伏电站控制器 | Modular Photovoltaic Power Station Controller

模块化电站控制器适用于通讯光伏电站、独立光伏电站，以及光伏—风力发电机，光伏—柴油/汽油发电机或市电互补的混合电源系统，实现光伏混合电源控制系统的供电控制和管理。

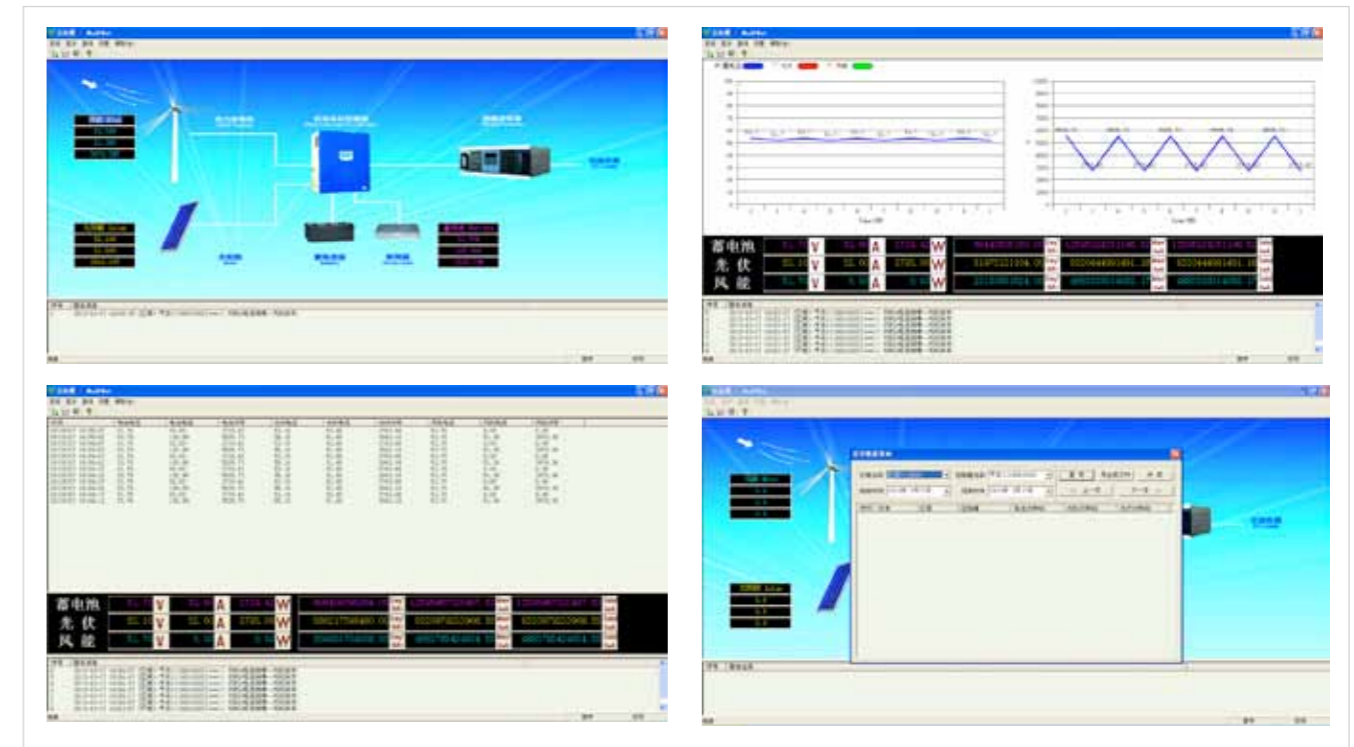
Modular Photovoltaic Power Station Controller applies to Communication Photovoltaic Power Station, Independent Photovoltaic Power Station, Hybrid Wind Solar Power System, Hybrid Solar Diesel Power System or City Power Hybrid System, to realize the power supply and management of Photovoltaic Hybrid Power Control system.

产品特点 | Product Feature

- ◆ 模块化设计，2~8路充电阵列
 - ◆ 分布式控制，模块间采用CAN总线互联互通，提高系统可靠性、灵活性
 - ◆ 三阶段充电控制过程，保证蓄电池的正常使用寿命
 - ◆ 人机界面采用单色大点阵液晶显示器及薄膜按键，菜单操作简洁，分别显示各模块工作参数
 - ◆ 各个模块内采用独立电源供电，保证高可靠、高抗干扰、电磁兼容性
 - ◆ 采用高性能模数转换器件，具有高的采样分辨率，保证系统控制精度
 - ◆ 每个模块均具有独立控制电路、报警功能，以及故障的自诊断、提醒功能
 - ◆ 具有防极性反接、防反充、过载、短路等完整的自保护
 - ◆ 配置RS485通讯接口，配合PC机监控软件，满足单台或多台电站系统远程监控的需求
- ◆ Distributed Control, adopt CAN bus internet communication between the modules, to improve the system reliability and flexibility.
 - ◆ Three stage charging control process, to guarantee the batteries' normal life.
 - ◆ Human-computer interface adapts monochromatic large dot matrix LCD and membrane keyboards, menu easy to operate, showing each module operating parameters respectively.
 - ◆ Inside each module, adopts independent power supply, to ensure high reliability, high noise immunity and electro magnetic compatibility
 - ◆ Adopt high performance ADC, with high sampling resolution, to ensure system control precision.
 - ◆ Every module has these function, control the circuit independently, alarm, fault self-diagnosis and reminder.
 - ◆ With the self-protection reverse polarity, anti-anti charge, overload and short circuit.
 - ◆ Equipped with RS485 communicate interface, fits PC monitoring software, to satisfy the requirement of remote control of one or more power station.

监控软件 | Monitoring software

- 1 当前发电功率、日发电量累计、月发电量累计、总发电量累计。
 - 2 系统详细运行参数。
 - 3 故障记录及报警。
- 1 Generated energy (every day, every month, every year)
 - 2 Detailed movement system paramter.
 - 3 The fault records and alarm.



可选备件 | Optional Parts



1. 串口以太网数据转换通信
Serial data transfer Ethernet communication



2. GPRS无线数据通讯
GPRS Wireless data communication



3. RS485接口
(可实现RS232, USB转换)RS485(Can convert to RS232 or USB)



4. 温度补偿
Temperature compensation



德明电源 ——
监控App即将上线! 敬请期待!

Deming APP of monitor is coming, so stay tuned!



济南德明电源设备有限公司 Jinan Deming Power Equipment Co., Ltd.

地址：山东省济南市天桥区二环北路8666号

ADD : No.8666 erhuan north Road,tianqiao District,Jinan City,Shandong Province

电话：0531-85662088 85662275

Tel : 0086-531-85662088 85662275

