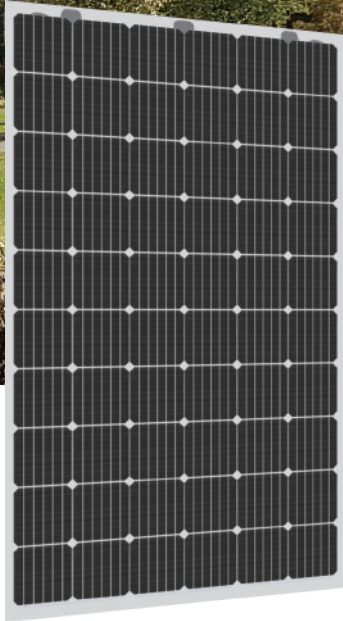
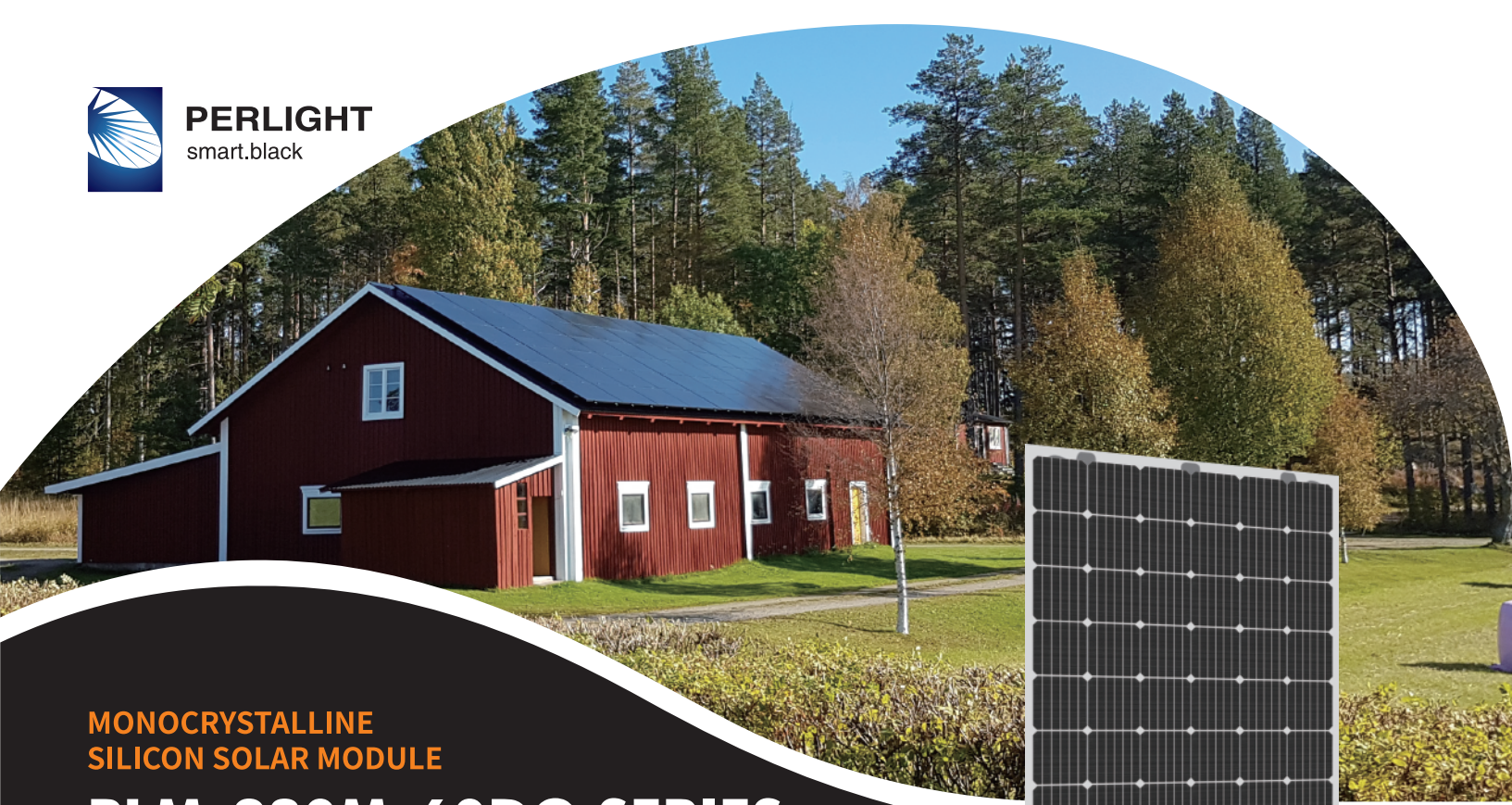




PERLIGHT
smart.black



**MONOCRYSTALLINE
SILICON SOLAR MODULE**

PLM-280M-60DG SERIES

PERLIGHT SOLAR

Founded in 2006, Perlight Solar is growing to be the world leading residential smart solar PV products manufacturer & service provider.

Based on more than 30 years manufacturing experience of Baolite Group, along with the implementation of MES & ERP system, Perlight Solar have realized lean and flexible manu-

facturing of solar cell & solar module.

With corporate values "Customer First, Talent Excellence, Pragmatic Innovation, Integrity & Win-Win", Perlight Solar will continue to provide excellent smart energy products & service to global families and vision to be the leading brand in global distributed smart energy.



18.24%
Maximum Module Efficiency



12 Years
Limited Product Warranty



30 Years
Performance Warranty



Performance

Good performance even under low light conditions



Reliability

Strict selection of raw materials and strict quality control ensure reliability



Smart

Optional smart-ready design. Easy upgrade into smart solar module solution

DOUBLE GLASS

MONO DOUBLE GLASS 60-CELL SERIES

ELECTRICAL PERFORMANCE

Module type	PLM-280M-60DG SERIES							
Power output	P_{max}	W	275	280	285	290	295	300
Power output tolerances	ΔP_{max}	%	0 - 3					
Voltage at Pmax	V_{mpp}	V	32.06	32.30	32.43	32.59	32.71	32.86
Current at Pmax	I_{mpp}	A	8.58	8.67	8.79	8.90	9.02	9.13
Open-circuit voltage	V_{oc}	V	38.52	38.65	38.80	38.99	39.18	39.37
Short-circuit current	I_{sc}	A	9.16	9.24	9.32	9.40	9.48	9.56
Solar Module Efficiency	Eff.	%	16.72	17.02	17.33	17.63	17.93	18.24

STC: 1000W/m² irradiance, 25°C cell temperature, AM 1.5g spectrum according to EN 60904-3.

ELECTRICAL DATA (NOCT)

Maximum Power- P_{MAX} (Wp)	203.50	206.70	210.40	214.70	218.80	222.40
Maximum Power Voltage- V_{MPP} (V)	29.40	29.60	29.80	30.10	30.30	30.60
Maximum Power Current- I_{MPP} (A)	6.92	7.00	7.06	7.14	7.21	7.27
Open Circuit Voltage- V_{oc} (V)	35.70	35.80	35.50	36.20	36.40	36.50
Short Circuit Current- I_{sc} (A)	7.42	7.48	7.55	7.61	7.68	7.74

MECHANICAL DATA

Solar cells	Monocrystalline 156.75×156.75mm(6 inches)
Cell orientation	60 cells (6×10)
Module dimensions	1658×992×6mm (1658×992×25mm with junction box)
weight	23.2kg
front Glass	2.5mm, High Transmission, AR Coated and Heat Strengthened Glass
EVA	Clear / White
Back Glass	Heat Strengthened Glass, 2.5mm
Frame	Frameless /Customized frame
J-Box	IP 67
Cables & Plug connectors	600mm/4MM2 & MC4 compatible/IP67
Fire Type	CLASS C

TEMPERATURE RATINGS

Nominal Operating Cell Temperature (NOCT)	44°C (±2°C)
Temperature Coefficient of P_{MAX}	- 0.40%/°C
Temperature Coefficient of V_{oc}	- 0.30%/°C
Temperature Coefficient of I_{sc}	+ 0.06%/°C

PACKAGING CONFIGURATION

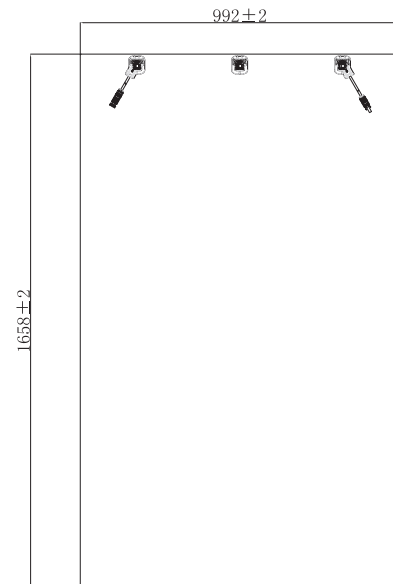
Modules per box: 33 pieces
Modules per 40' container: 858 pieces

Perlight Partners



PERLIGHT
smart.black

Module Diagram:



BACK VIEW

Electrical Curves:

