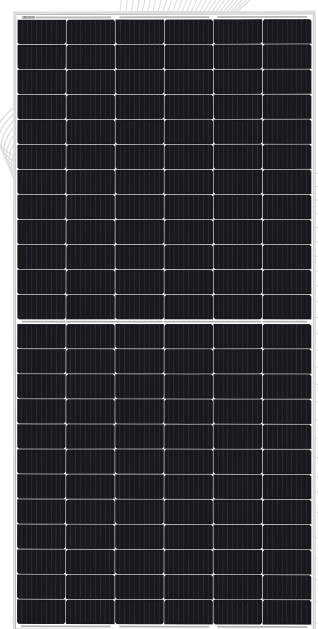


**PERC MONO CRYSTALLINE MODULE
-----HALF CELLS**

GH460M6-72HSW-C

445 / 450 / 455 / 460



High application, patent protection frame



Technology

High module conversion efficiency through superior manufacturing technology



PID Free

Excellent PID resistance according to IEC TS 62804-1



Performance

High performance under low light conditions (Cloudy days, mornings and evenings)



Quality

Manufactured according to International Quality and Environmental Management Systems (ISO9001, ISO14001)



Value

Our vertically integrated business model allows for competitive pricing and great value

Superior Manufacturing-Quality Assurance



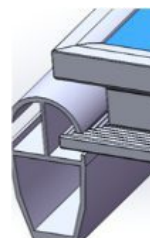
- TQC & SPC quality control systems
- Advanced cell sorting to avoid electric mismatch
- 100% twice EL tests

High ornamental value

The frame structure can replace the module embedded in the building structure, improve the beauty, and have good practicality

Insert block and groove design

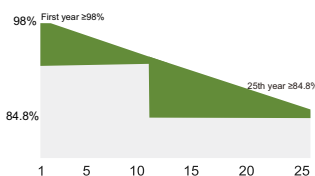
Short bearing distance, good fixing effect, wide application range, IP reserved



Tier 1



Warranty



- 12 Years product warranty
- 25 Years power output warranty

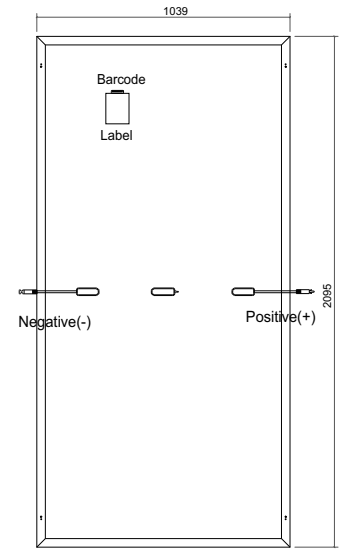
Electrical Specifications

* STC irradiance of 1000W/m² spectrum AM 1.5 and cell temperature of 25°C

Module Type	Pm(W)	Tolerance	Imp(A)	Vmp(V)	Isc(A)	Voc (V)	Module Efficiency
GH445M6-72HSW-C	445	0/+3%	10.92	40.77	11.35	50.12	20.44%
GH450M6-72HSW-C	450	0/+3%	11.01	40.91	11.43	50.27	20.67%
GH455M6-72HSW-C	455	0/+3%	11.10	41.04	11.51	50.42	20.90%
GH460M6-72HSW-C	460	0/+3%	11.18	41.17	11.59	50.57	21.13%

Mechanical Data

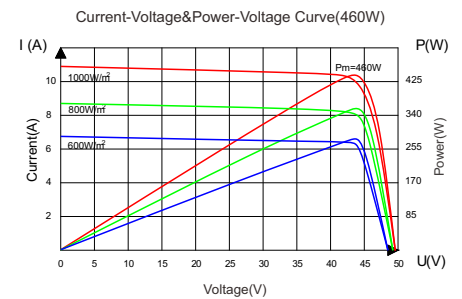
Cell Type	P type Mono-crystalline
Cell Arrangement	144 (6x24)
Module Structure	Glass/Encapsulant/Backsheet
Glass Thickness	3.2mm
Application Class	Class II
Junction Box Rating	IP67/P68
Cables	4mm ² /1300mm or Customized
Connector Type	MC4/MC4 Compatible



(Back side)
Note:mm

Maximum Ratings

Operating Temperature	-40°C to +85°C
Maximum System Voltage	1000V DC(IEC)
Maximum Series Fuse Rating	20A
Number of Diodes	3

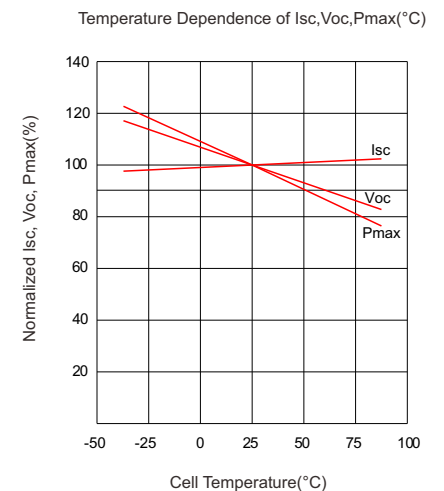


Packaging

Module Dimensions	2095x1039x30 mm
Weight	24.0kg
Container	40' HQ
Pieces per Pallet	36
Pieces per Container	792

Temperature Characteristics

Temperature Coefficient of Isc	+0.0487%/°C
Temperature Coefficient of Voc	-0.265%/°C
Temperature Coefficient of Pmax	-0.328%/°C



Statement: Due to technological progress, product parameters will be adjusted accordingly; When signing the contract, the latest data of the company shall prevail.



Hengdian Group DMEGC Magnetics Co., Ltd.
Hengdian Industrial Zone, Dongyang City
Zhejiang Province, China 322118

Tel: 0086-579-8658-8825 Fax: 0086-579-8655-4845
Email: solar@dmegc.com.cn
www.chinadmegc.com www.dmegcsolar.com