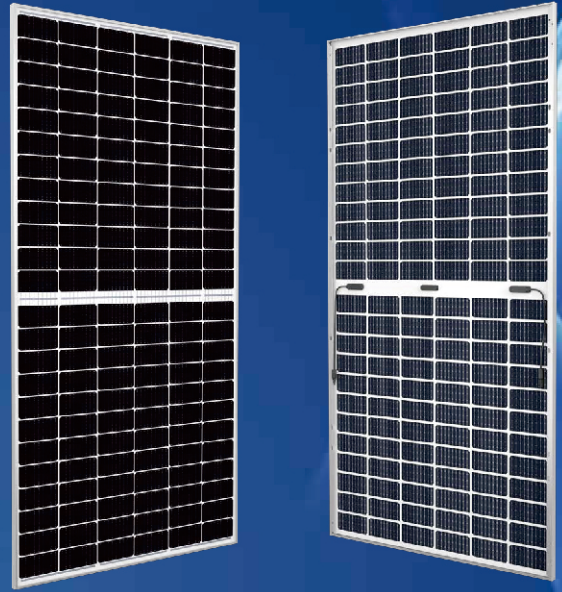


EliTe PLUS

PERC BIFACIAL PV MODULE

ET-M672BH435TW/TB 435W
ET-M672BH440TW/TB 440W
ET-M672BH445TW/TB 445W
ET-M672BH450TW/TB 450W
ET-M672BH455TW/TB 455W



*6BB and MBB products can be provided upon request.



Enhanced safety by excellent fire resistance



Perfect for sandy, snowy and high latitude regions



Bifacial technology enables additional energy harvesting from rear side (up to 25%)

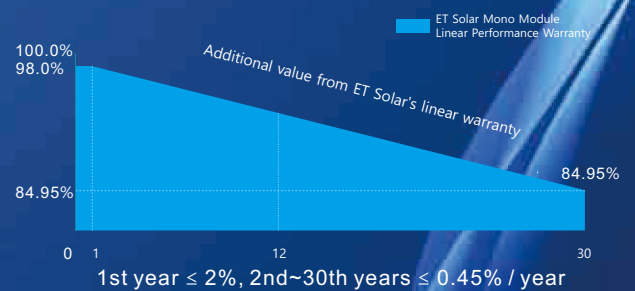


Lower operating temperature, more reliable



Cut cell, Less internal power loss, Less mismatch loss

WARRANTY



IEC61215
IEC61730
UL61215
UL61730



Guarantee on product
material and workmanship



linear power
output warranty



M/ET-PD-EN-EU2021V4

ELECTRICAL SPECIFICATIONS

Module Type	ET-M672BH435TW ET-M672BH435TB		ET-M672BH440TW ET-M672BH440TB		ET-M672BH445TW ET-M672BH445TB		ET-M672BH450TW ET-M672BH450TB		ET-M672BH455TW ET-M672BH455TB	
	STC	NOCT	STC	NOCT	STC	NOCT	STC	NOCT	STC	NOCT
Maximum Power -P _{mp} (W)	435	326	440	330	445	334	450	338	455	342
Open Circuit Voltage -V _{oc} (V)	49.10	46.10	49.20	46.30	49.40	46.50	49.60	46.70	49.80	46.90
Short Circuit Current -I _{sc} (A)	11.36	9.22	11.48	9.30	11.52	9.38	11.58	9.46	11.65	9.54
Maximum Power Voltage -V _{mp} (V)	40.80	38.00	41.00	38.20	41.20	38.40	41.40	38.60	41.60	38.80
Maximum Power Current -I _{mp} (A)	10.66	8.58	10.73	8.64	10.80	8.70	10.87	8.76	10.93	8.82
Module Efficiency STC-η _m (%)	20.0%		20.2%		20.5%		20.7%		20.9%	
Power Tolerance (W)					(0 , +4.99)					
Pmax Temperature Coefficient					-0.340%/°C					
Voc Temperature Coefficient					-0.257 %/°C					
Isc Temperature Coefficient					+0.052 %/°C					

STC: Irradiance 1000 W/m² module temperature 25°C AM=1.5

REAR SIDE POWER GAIN (ET-M672BH445TW)

Power Gain	10%	15%	20%	25%
Maximum Power -P _{mp} (W)	490	512	534	556
Open Circuit Voltage -V _{oc} (V)	49.40	49.50	49.50	49.50
Short Circuit Current -I _{sc} (A)	12.67	13.24	13.82	14.40
Maximum Power Voltage -V _{mp} (V)	41.20	41.30	41.30	41.30
Maximum Power Current -I _{mp} (A)	11.88	12.42	12.96	13.50

MECHANICAL SPECIFICATIONS

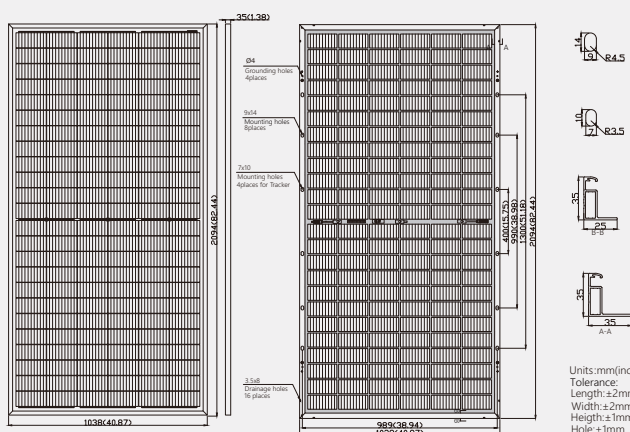
External Dimension	2094 x 1038 x 35mm
Weight	24kg
Solar Cells	PERC Mono crystalline 166 x 83 mm (144pcs)
Front Glass	3.2mm AR coating tempered glass
Frame	Anodized aluminium alloy
Junction Box	IP68
Cable Length (Including Connector)	4.0 mm ² (12AWG), Portrait:255mm(+)/355mm(-);Or customized
Connector	MC4 Compatible

APPLICATION CONDITIONS

Maximum System Voltage	1500VDC
Maximum Series Fuse Rating	25A
Operating Temperature	-40~+85 °C
Nominal Operating Cell Temperature	45±2 °C
Mechanical Load	5400Pa
Fire Performance	Class C(IEC)/Type 1(UL)

PHYSICAL CHARACTERISTICS

Unit:mm

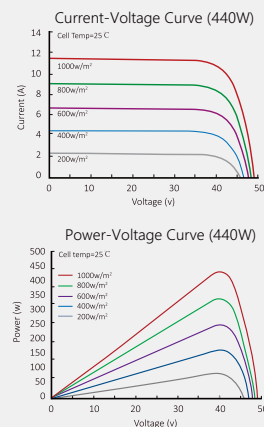


* The above drawing is a graphical representation of the product. For engineering quality drawings please contact ET Solar.

PACKING MANNER

Container	40'HQ
Pieces per Pallet	31
Pallets per Container	22
Pieces per Container	726

CURVE



Note: the specifications are obtained under the Standard Test Conditions (STCs): 1000 W/m² solar irradiance, 1.5 Air Mass, and cell temperature of 25°C. The NOCT is obtained under the Test Conditions: 800 W/m², 20°C ambient temperature, 1m/s wind speed, AM 1.5 spectrum. Please contact info@etsolar.com for technical support. The actual transactions will be subject to the contracts. This parameters is for reference only and it is not a part of the contracts. The specifications are subject to change without prior notice.