

320W Mono Crystalline Solar Modules

FEATURES

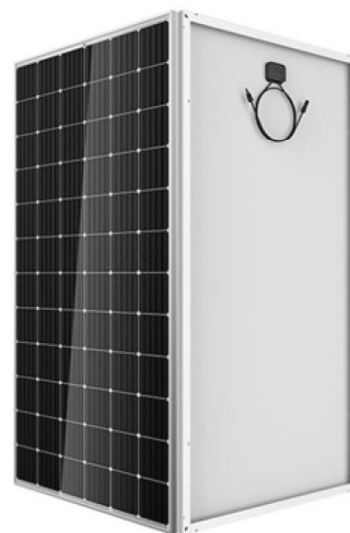
The 60-celled MS-SP6-60M monocrystalline modules produced by Macsun Solar (power output 300Wp up to 320Wp, black modules up to 320Wp) are best deployed in larger installations requiring higher power outputs.

- The MS-SP6-60M series is compliant to high international standards and features a 25-year linear warranty on product outputs which further ensures your return on investments over time. Certified according to EN 60068-2-68, it is resistant to the impact of sand and dust and is thus a valuable choice for projects in challenging environments.

- High module efficiency, up to 19.59%

Industry-leading 25-year linear warranty on outputs

Higher power outputs



ELECTRICAL CHARACTERISTICS AT STC

型号 TYPE		MS-SP6-60-305M	MS-SP6-60-305M	MS-SP6-60-315M	MS-SP6-60-320M
Maximum Power	P _{max} (W)	305W	310W	315W	320W
Tolerance Value for Power	%	0~+5%	0~+5%	0~+5%	0~+5%
Maximum Power Voltage	V _{mpp} (V)	32.57	32.84	33.16	33.48
Maximum Power Current	I _{mpp} (A)	9.37	9.44	9.50	9.56
Open Circuit Voltage	V _{oc} (V)	40.05	40.30	40.53	40.80
Short Circuit Current	I _{sc} (A)	9.85	9.91	9.98	10.05
Module Efficiency	η	>18.67%	>18.98%	>19.28%	>19.59%

MECHANICAL SPECIFICATIONS

Solar Cells	156.75x156.75mm Monocrystalline cell, 6 "(6x10)
Junction box	IP67, combined with 3 by-pass diodes
Front Glass Thickness	High transparency, low iron, tempered glass 3.2 mm (AR-coating)
Connecting Cable/Connector	4 mm ² , 900 mm Cable, MC4 Connector-compatible
Frame Dimension	Anodized aluminum alloy. Frame in alu or black, backside in white or black
Weight	19.3KG±5%
Quantity in FCL Containers	26 pcs/ pallet, 728 pcs per 40GP Container

