

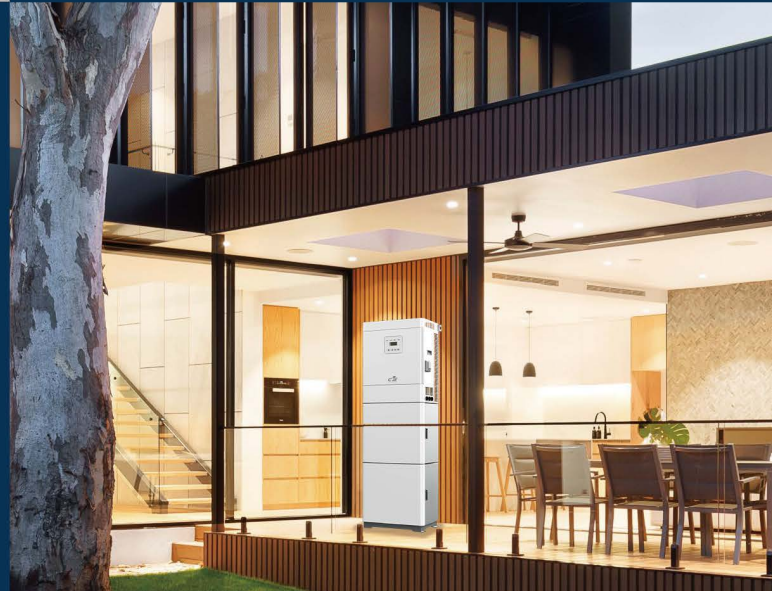
Battery Specifications	CREEK2-5-A	CREEK2-10-A	CREEK5-10-A	CREEK5-15-A	CREEK5-20-A
Capacity [KWh]	4.91	9.83	10.24	15.36	20.48
Battery voltage range [V]	48 ~ 56	48 ~ 56	48 ~ 56	48 ~ 56	48 ~ 56
Recommended battery voltage [V]	51.2	51.2	51.2	51.2	51.2
Cut Off Voltage [V]	48	48	48	48	48
Max. charging Voltage [V]	56	56	56	56	56
Max. Protective Voltage [V]	58	58	58	58	58
Dimension (W/D/H[mm])	580*350*1280	580*350*1800	580*350*1280	580*350*1800	580*350*1800
System Weight[kg]	110	167	149	197	245
Max. charge/discharge current [A]	60/60	120/120	120/120	120/120	120/120
Peak charge/discharge current [A]	60/60	120/120	120/120	120/120	120/120
Communication interfaces	CAN/RS485/WIFI/LAN/DRM				
Reverse connect protection	Yes	Yes	Yes	Yes	Yes
Warranty	10 Year Performance Warranty				



5-20KWh flexible portfolio  
 Fast installation  
 High energy density  
 All in one  
 Scalability  
 WIFI & APP

### Efficiency

- MPPT efficiency 99.90%
- Euro efficiency 97%
- Max. efficiency 97.60%
- Max. Battery charge efficiency 95%
- Max. Battery discharge efficiency 95%



Battery Specifications	CREEK2-5-A	CREEK2-10-A	CREEK5-10-A	CREEK5-15-A	CREEK5-20-A
<b>DC input</b>					
Max. recommended DC power [W]	4600	6000	6000	6000	7000
Max. DC voltage[V]	500	500	500	500	500
Norminal DC operating voltage[V]	360	360	360	360	360
MPPT voltage range [V]	125 ~ 500	125 ~ 500	170 ~ 500	170 ~ 500	220 ~ 500
MPPT voltage range@full load [V]	150 ~ 500	150 ~ 500	150 ~ 500	150 ~ 500	150 ~ 500
Max. input current [A]	14/14	14/14	14/14	14/14	14/14
Max. short circuit current [A]	17.5/17.5	17.5/17.5	17.5/17.5	17.5/17.5	17.5/17.5
Start input voltage [V]	125	125	125	125	125
No. of MPP trackers	2	2	2	2	2
Strings per MPP tracker	1	1	1	1	1
Max. inverter backfeed current to array	0	0	0	0	0
DC disconnection switch	/	/	/	/	/
<b>AC output</b>					
Norminal AC power [VA]	3600	4000	4000	5000	5000
Max. apparent AC power [VA]	3600	4000	4000	5000	5000
Rated grid voltage(range) [V]	230 (176 to 270)				
Rated grid frequency [Hz]	50/60	50/60	50/60	50/60	50/60
Norminal AC current [A]	16	16	16	16	16
Max.AC current [A]	16	16	16	16	16
Displacement power factor	0.99 leading...0.99 lagging				
Total harmonic distortion (THDl)	< 2%	< 2%	< 2%	< 2%	< 2%
Load control	optional	optional	optional	optional	optional
<b>AC input</b>					
Norminal AC power [VA]	3600	4000	4000	5000	5000
Rated grid voltage(range) [V]	230 (176 to 270)				
Rated grid frequency [Hz]	50/60	50/60	50/60	50/60	50/60
Norminal AC current [A]	16	17.4	17.4	21.7	21.7
Max.AC current [A]	16	17.4	17.4	21.7	21.7
Displacement power factor	0.99 leading...0.99 lagging				
AC inrush current	35	35	35	35	35
<b>EPS output</b>					
EPS rated power [VA]	3600	4000	4000	5000	5000
Max. EPS power [VA]	3600	4000	4000	5000	5000
EPS rated voltage, Frequency	230VAC, 50/60Hz				
EPS rated current [A]	16	17.4	17.4	21.7	21.7
Max. EPS current [A]	16	17.4	17.4	21.7	21.7
Switch time [s]	<500ms	<500ms	<500ms	<500ms	<500ms
Total harmonic distortion (THDv)	<2%	<2%	<2%	<2%	<2%
Parallel operation	Yes	Yes	Yes	Yes	Yes
Compatible with the generator	Yes(signal provided only)				