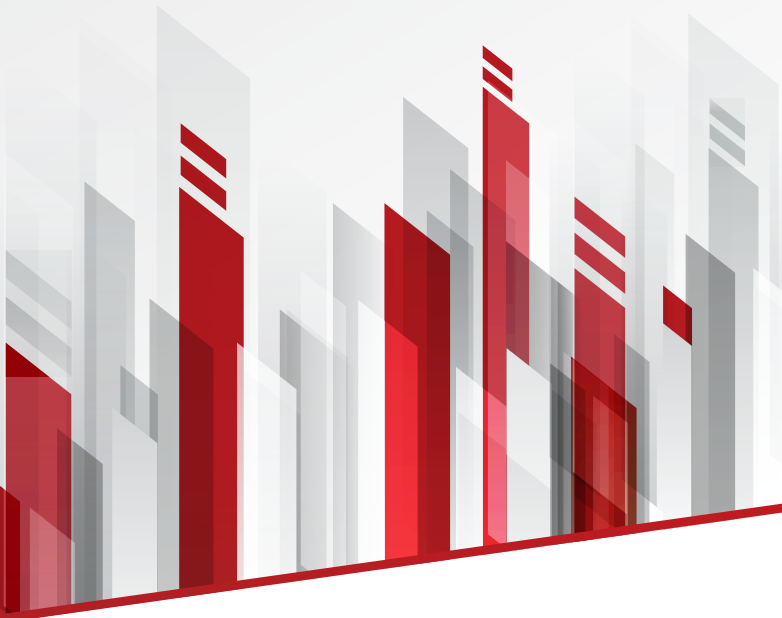


## Super Roof That Generates Electricity

**Durable and Reliable** | 25-year service life design  
High waterproof High wind resistance

**Green and Efficient** | Power generation income increased by 15%+

**Intelligent Operation and Maintenance** | Online and unmanned Robot cleaning



EMPOWER EVERY INCH OF  
OUR BUILDING TO

**Generate**  
**ELECTRICITY**

## Standard & Certification

- IEC 61215
- IEC 62804
- Wind resistance test
- Anti-thunder-stroke
- IEC 61730
- IEC 62561
- Wind and rain resistance test
- Green building material
- IEC 63126
- TÜV Certificate
- Combustion performance test
- CGC certification



### High wind resistance

-11700P ultra-strong wind uplift resistance.  
Third party evaluation and certification.



### High waterproof

360 degree upright lock edge | No splice plate  
Clearance seal | Rain diversion | Standard plug | Dynamic seal



### High fire prevention

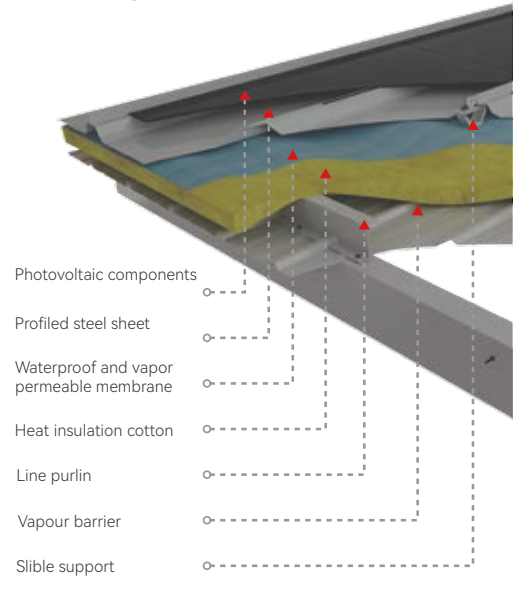
Core components passed the GB8624 fire test.  
Using non-combustible materials grade A fire prevention.  
System design meets the requirements of building design fire prevention specifications.



### High reliability

Full roof laying photovoltaic modules, free bracket, quick installation.  
The photovoltaic roof can be stepped on, no need to reserve maintenance channels. The module has no frame, so it does not accumulate dust and can generate electricity stably, sliding roof connector with strong climate adaptability. Optional combination of color components.

## Local profiles



## Electrical Performance Parameters (STC)

290	295	300
290	295	300
32.72	32.85	32.98
11.32	11.37	11.42
27.44	27.57	27.7
10.57	10.7	10.83
19.89%	20.23%	20.57%

Component model	
Maximum power	(P <sub>max</sub> /W)
Open-circuit voltage	(V <sub>oc</sub> /V)
Short-circuit current	(I <sub>sc</sub> /A)
Peak power voltage	(V <sub>mp</sub> /V)
Peak power current	(I <sub>mp</sub> /A)
Component efficiency	(%)

## Electrical Performance Parameters (NOCT)

290	295	300
214.8	218.5	222.1
30.54	30.66	30.78
9.13	9.17	9.21
25.38	25.50	25.62
8.47	8.57	8.67

## TCR (STC test)

Short-circuit current (I <sub>sc</sub> )	+0.057 %/°C
Open-circuit voltage (V <sub>oc</sub> )	-0.286 %/°C
Peak Power (P <sub>max</sub> )	-0.370 %/°C

## Mechanical load

Static load: front 5400Pa back 2400Pa
Hail test: diameter 25mm mass 7.53g
Impact speed 23m/s

## Color steel layer

Steel plate thickness	0.6mm
Steel plate strength	≥350 MPa
Plating thickness	≥180 g/m <sup>2</sup>

## Working parameters

Working temperature	-40°C~+85°C	Maximum fuse-rated current	20A
Power tolerance	0~+5W	Nominal working temperature	45±2°C
Maximum system voltage	DC1500V	Safety protection level	Class II

\*The above parameters are for reference only, and the specific project design and actual supply shall prevail.