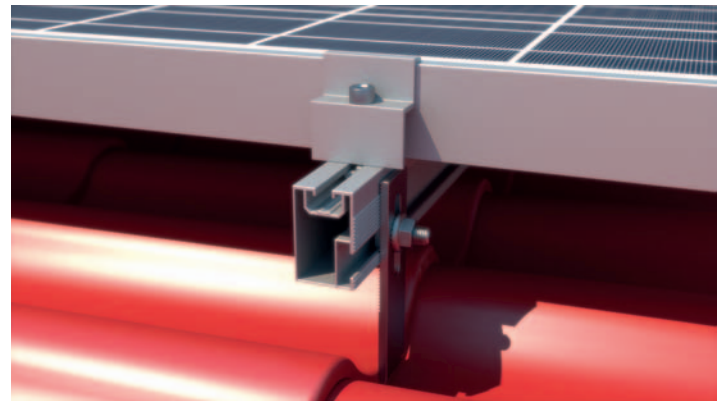
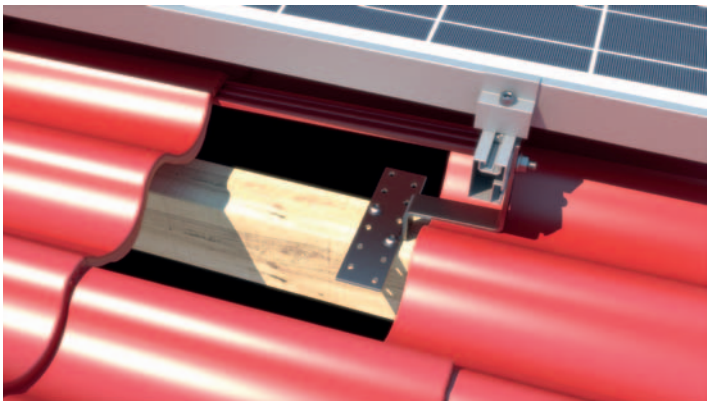
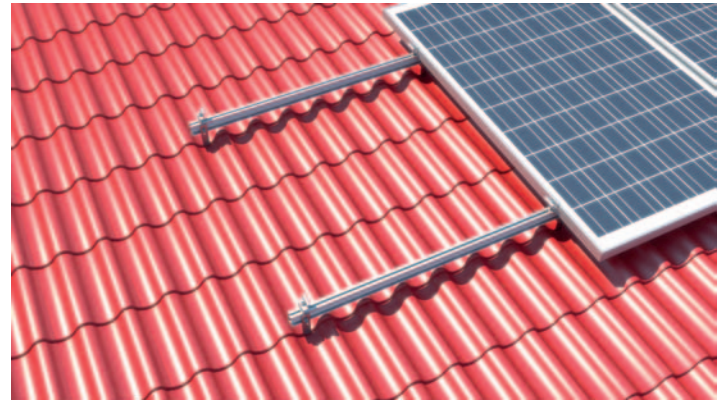
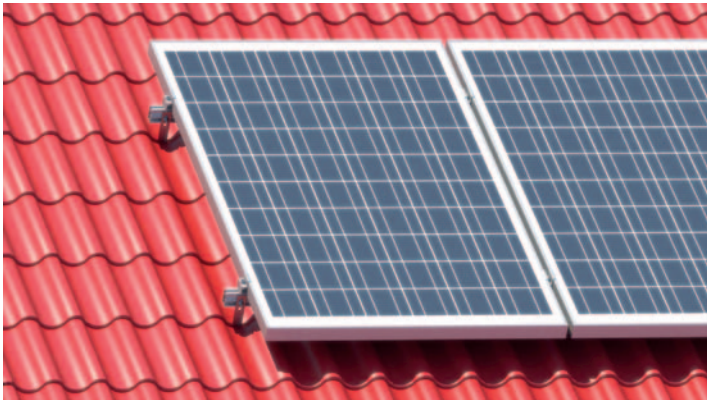


SYSTEM REM-06 VERTICAL

PANTILE ROOF II



Art. 0109
Mounting Rail
 Measurements: 31x50
 Length: 6200mm, 3100mm, 2070mm
 Joining screws
 top: M8
 side: M8/M10/M12
 Material: AL 6060T6



Art. 093
Pantile Roof Hook Standard
 Plate: 180x50x4, (12x)Hole: Ø7mm
 Bar: 30x5, long Hole: 9x47
 Use: pantile roof
 Material: A2 1.4301 stainless steel, shot blasting



Art. 0129
Hammerhead screws 28/15
 Measurements:
 M8 16÷70
 M10 16÷100
 Use: Mounting Rail Art. 0110
 Material: A2 1.4301 stainless steel



Art. 0134
Hexagon flange nuts with serration
DIN 6923
 M6
 M8
 M10
 M12
 Material: 1.4301 A2



Art. 0132
Hexagon socket cap screws DIN 912
 with serration
 M8 12÷60
 Material: A2 1.4301 stainless steel



Art. 080
T-slot nuts, self aligning with spring ball
 M8
 Used with hexagon socket cap screw
 Art. 0132
 Use: for Mounting Rails Art. 0109, Art. 0110, Art. 062, Art. 0111, Art. 0112
 Material: AL 6060T6



Art. 0147
Click
 M8
 Material: Aluminium
 for rails: Art. 0109, Art. 0111



Art. 073
Middle Clamp
 Length: 50mm (standard)
 Length: 60mm – 100mm
 Height: 30mm
 Thickness: 3mm
 Colors: plain aluminium/black
 Material: AL 6060T6



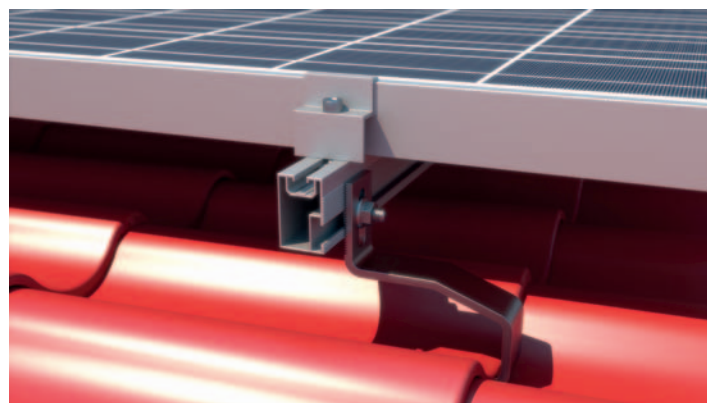
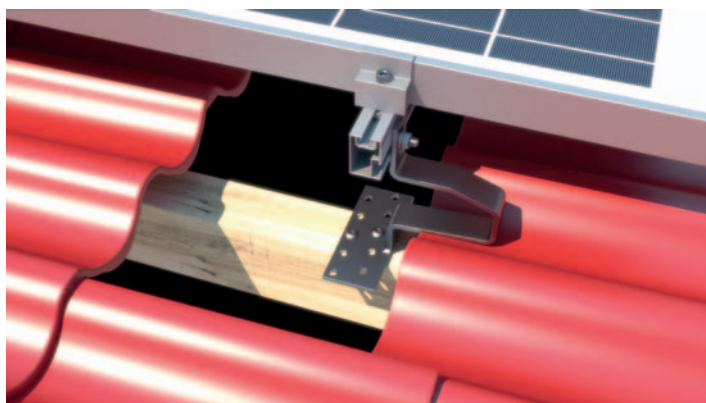
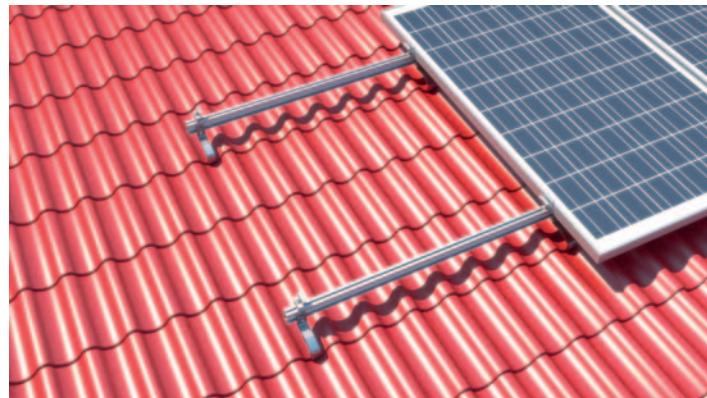
Art. 075
End clamp
 Length: 50 (standard)
 Length: 70mm
 Height: from 30mm to 50mm
 Thickness: 3mm
 Colors: plain aluminium/black
 Material: AL 6060T6



Art. 0127
Screw TCS with serration
 M6 60÷160
 M8 60÷400
 Use: Roof Hook
 Material: A2 1.4301 stainless steel

SYSTEM REM-06 PLUS VERTICAL

PANTILE ROOF II



Art. 0109

Mounting Rail
Measurements: 31x50
Length: 6200mm, 3100mm, 2070mm
Joining screws
top: M8
side: M8/M10/M12
Material: AL 6060T6



Art. 0115

Pantile Roof Hook HEAVY II
Plate: 150x60x5, (10x)Hole: Ø9mm
Bar: 35x6,
Long Hole: 11x37,5
Use: pantile roof located in high wind speed, or heavy snow loads areas.
Material: A2 1.4301 stainless steel, shot blasting



Art. 0129

Hammerhead screws 28/15
Measurements:
M8 16÷70
M10 16÷100
Use: Mounting Rail Art. 0110
Material: A2 1.4301 stainless steel



Art. 0134

Hexagon flange nuts with serration DIN 6923
M6
M8
M10
M12
Material: 1.4301 A2



Art. 0132

Hexagon socket cap screws DIN 912 with serration
M8 12÷60
Material: A2 1.4301 stainless steel



Art. 080

T-slot nuts, self aligning with spring ball M8
Used with hexagon socket cap screw Art. 0132
Use: for Mounting Rails Art. 0109, Art. 0110, Art. 062, Art. 0111, Art. 0112
Material: AL 6060T6



Art. 0147

Click
M8
Material: Aluminium
for rails: Art. 0109, Art. 0111



Art. 073

Middle Clamp
Length: 50mm (standard)
Length: 60mm – 100mm
Height: 30mm
Thickness: 3mm
Colors: plain aluminium/black
Material: AL 6060T6



Art. 075

End clamp
Length: 50 (standard)
Length: 70mm
Height: from 30mm to 50mm
Thickness: 3mm
Colors: plain aluminium/black
Material: AL 6060T6

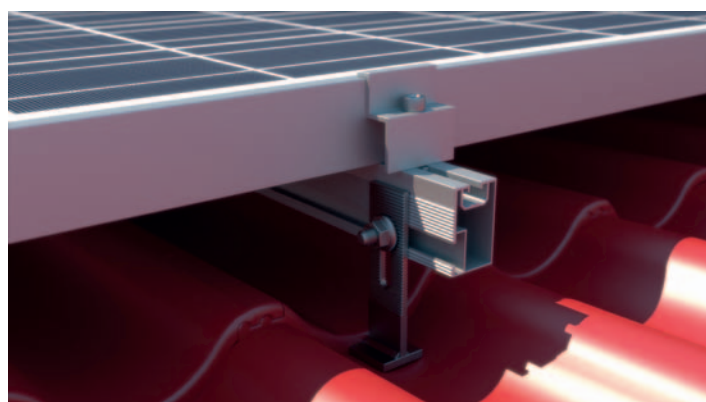
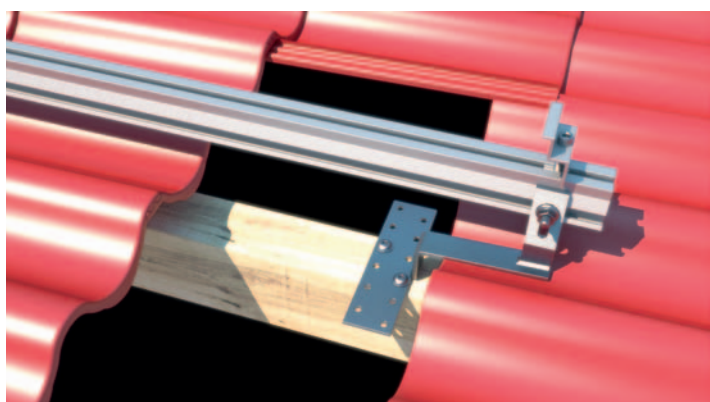
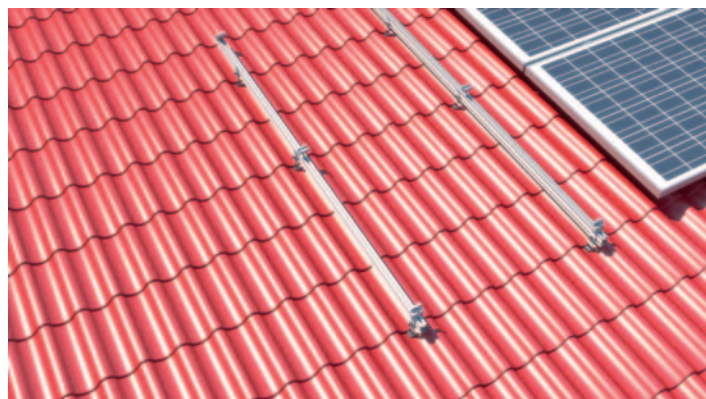
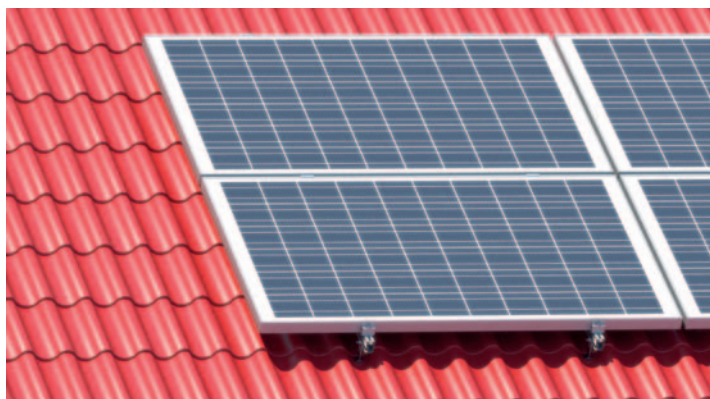


Art. 0127

Screw TCS with serration
M6 60÷160
M8 60÷400
Use: Roof Hook
Material: A2 1.4301 stainless steel

SYSTEM REM-06 HORIZONTAL

PANTILE ROOF II



Art. 0109

Mounting Rail
Measurements: 31x50
Length: 6200mm, 3100mm, 2070mm
Joining screws top: M8
side: M8/M10/M12
Material: AL 6060T6



Art. 0114

Pantile Roof Hook vertical
Plate: 180x50x4, (12x)Hole: Ø7mm
Bar: 30x5,
Long Hole: 9x37,5
Use: pantile roof, horizontal mounting of PV modules
Material: A2 1.4301 stainless steel, shot blasting



Art. 0129

Hammerhead screws 28/15
Measurements:
M8 16÷70
M10 16÷100
Use: Mounting Rail Art. 0110
Material: A2 1.4301 stainless steel



Art. 0134

Hexagon flange nuts with serration DIN 6923
M6
M8
M10
M12
Material: 1.4301 A2



Art. 0132

Hexagon socket cap screws DIN 912 with serration
M8 12÷60
Material: A2 1.4301 stainless steel



Art. 080

T-slot nuts, self aligning with spring ball M8
Used with hexagon socket cap screw Art. 0132
Use: for Mounting Rails Art. 0109, Art. 0110, Art. 062, Art. 0111, Art. 0112
Material: AL 6060T6



Art. 0147

Click
M8
Material: Aluminium
for rails: Art. 0109, Art. 0111



Art. 073

Middle Clamp
Length: 50mm (standard)
Length: 60mm – 100mm
Height: 30mm
Thickness: 3mm
Colors: plain aluminium/black
Material: AL 6060T6



Art. 075

End clamp
Length: 50 (standard)
Length: 70mm
Height: from 30mm to 50mm
Thickness: 3mm
Colors: plain aluminium/black
Material: AL 6060T6



Art. 0127

Screw TCS with serration
M6 60÷160
M8 60÷400
Use: Roof Hook
Material: A2 1.4301 stainless steel